

**METRIC**

MIL-PRF-32143C

9 February 2016

**SUPERSEDING**

MIL-PRF-32143B

5 October 2011

**PERFORMANCE SPECIFICATION**

**BATTERIES, STORAGE: AUTOMOTIVE,  
 VALVE REGULATED LEAD ACID (VRLA)**

This specification is approved for use by the U.S. Army Tank-automotive and Armaments Command and is available for use by all Departments and Agencies of the Department of Defense.

**1. SCOPE**

1.1 Scope. This performance specification covers the general requirements for automotive valve regulated lead acid storage batteries (VRLA), also known as Sealed Lead Acid Batteries (SLAB). The batteries are nominal 12-volt batteries that are generally used for starting, lighting and ignition applications and have non-removable covers.

1.2 Classification and Part or Identifying Number (PIN). Storage batteries covered by these specifications are of the following types.

Designation	Construction	Minimum Reserve Capacity (Minutes)	Minimum Ampere-hours (20-hour Rate)
6TAGM	Absorbed Glass Mat	230	120
6TGEL	Gelled electrolyte	230	120

Designation	Minimum Ampere-hours	Type	CAGE	PIN
6TAGM	120	TYPE I	19207	12423975
6TGEL	120	TYPE II	19207	12423975-001

Comments, suggestions, or questions on this document should be addressed to U.S. Army Tank-Automotive Research & Development Center, ATTN: RDTA-SIE-ES-PLDP-PLDE, Warren, MI 48397-5000, or emailed to [usarmy.detroit.rdecom.mbx.tardec-standardization@mail.mil](mailto:usarmy.detroit.rdecom.mbx.tardec-standardization@mail.mil). Since contact information can change, you may want to verify the currency of this address information using the ASSIST Online database at <https://assist.dla.mil>.

AMSC N/A

FSC 6140

DISTRIBUTION STATEMENT A. Approved for public release; distribution is unlimited.

## 2. APPLICABLE DOCUMENTS

2.1 General. The documents listed in this section are specified in sections 3, 4, or 5 of this specification. This section does not include documents cited in other sections of this specification or recommended for additional information or as examples. While every effort has been made to ensure the completeness of this list, document users are cautioned that they must meet all specified requirements of documents cited in sections 3, 4, or 5 of this specification, whether or not they are listed.

### 2.2 Government documents.

2.2.1 Specifications, standards, and handbooks. The following specifications, standards, and handbooks form a part of this document to the extent specified herein. Unless otherwise specified, the issues of these documents are those cited in the solicitation or contract.

#### INTERNATIONAL STANDARDIZATION AGREEMENTS

STANAG 4015 - Starter Battery Spaces For Tactical Land Vehicles.

#### DEPARTMENT OF DEFENSE SPECIFICATIONS

MIL-DTL-53039 - Coating, Aliphatic Polyurethane, Single Component, Chemical Agent Resistant.  
MIL-DTL-64159 - Camouflage Coating, Water Dispersible Aliphatic Polyurethane, Chemical Agent Resistant.

#### DEPARTMENT OF DEFENSE STANDARDS

MIL-STD-810 - Environmental Engineering Considerations and Laboratory Tests.

(Copies of these documents are available online at <http://quicksearch.dla.mil>.)

2.2.2 Other Government documents, drawings, and publications. The following other Government documents, drawings, and publications form a part of this document to the extent specified herein. Unless otherwise specified, the issues of these documents are those cited in the solicitation or contract.

#### GENERAL REQUIREMENTS FOR SHIPMENTS AND PACKAGINGS

49 CFR 173.159- Batteries, Wet

(Copies of this document are available online at <http://www.gpo.gov/>.)

2.3 Non-Government publications. The following documents form a part of this document to the extent specified herein. Unless otherwise specified, the issues of these

documents are those cited in the solicitation or contract.

#### INTERNATIONAL AIR TRANSPORT ASSOCIATION (IATA)

IATA DGR - Dangerous Goods Regulations

(Copies of this document are available from [www.iata.org](http://www.iata.org).)

#### INTERNATIONAL CIVIL AVIATION ORGANIZATION (ICAO)

ICAO 9284 - Technical Instructions for the Safe Transport of Dangerous Goods by Air

(Copies of this document are available from [www.icao.int](http://www.icao.int).)

#### INTERNATIONAL MARITIME ORGANIZATION

IMO IMDG - International Maritime Dangerous Goods Code

(Copies of this document are available from [www.imo.org](http://www.imo.org).)

#### SOCIETY OF AUTOMOTIVE ENGINEERS (SAE)

SAE AS478 - Identification Marking Methods (DoD Adopted)

SAE J537 - Storage Batteries (DoD Adopted)

SAE J930 - Storage Batteries for Off -Road Self-Propelled Work Machines

SAE J1495 - Test Procedure for Battery Flame Retardant Venting Systems (DoD Adopted)

(Copies of these documents are available from [www.sae.org](http://www.sae.org).)

2.4 Order of precedence. Unless otherwise noted herein or in the contract, in the event of a conflict between the text of this document and the references cited herein, the text of this document takes precedence. Nothing in this document, however, supersedes applicable laws and regulations unless a specific exemption has been obtained.

### 3. REQUIREMENTS

3.1 Qualification. Batteries furnished under this specification shall be products that are authorized by the qualifying activity for listing on the applicable Qualified Products List (QPL) before contract award (see 4.1.1 and 6.6).

3.2 Materials and manufacturing processes. Unless otherwise specified herein, the design, materials and manufacturing process selection is the prerogative of the contractor as long as all articles submitted to the Government fully meet the operating, interface, support and ownership, and environmental requirements specified (see 4.7).

3.2.1 Recycled, recovered, or environmentally preferable materials. Recycled, recovered, or environmentally preferable materials should be used to the maximum extent possible, provided that the material meets or exceeds the operational and maintenance requirements, and promotes economically advantageous life cycle costs (see 6.4.2).

3.3 Interface and interoperability requirements. Batteries shall be designed and constructed as specified in table I, figure 2 through figure 8 and the battery shall be furnished as a complete, integral assembly, with no loose parts permitted. These requirements are derived from STANAG 4015. The battery (in series connected pairs) shall be fully compatible with an on-vehicle charging voltage range of 25 – 30 volts direct current (Vdc). Battery components shall be made from acid-resistant materials (see 4.3 and 4.5.1).

TABLE I. Physical and electrical requirements for Type I & Type II batteries.

Tests/Characteristic	Minimum values
Nominal voltage	12 volts
Charging constant potential (see note 1)	14.25 volts
Nominal weight/maximum (see note 2)	34kg nom / 40.75kg max
Internal resistance	2mΩ ± 0.6mΩ
Reserve capacity	230 minutes
Discharge rate and time to 7.2V	
at -18°C	1100 amp 30 sec
at -40°C	400 amp 30 sec
Life cycle capacity test	360 cycles
Full charge capacity @ 20 hour rate	120 ampere-hour (6.0 amps)
Retention of charge 40°C	
Reserve capacity after 90 days	200 minutes
Vibration resistance res cap	219 minutes

Notes:

1. For boost charging only, not for vehicle system voltage output.
2. 34 kg is desired, 40.75 kg maximum.

3.3.1 Containers. The battery container shall be colored gray, and have physical requirements as specified in 3.3.1.1 through 3.3.1.4.

3.3.1.1 Electrical breakdown. The battery container shall have no indication of perforation or burn-through when subjected to an alternating current potential of 100 V rms per  $2.54 \times 10^{-2}$  millimeters (mm) material thickness as specified in 4.3.1.1.

3.3.1.2 Acid absorption. The battery container material shall exhibit no cracks or blisters, no more than 1.5 percent (%) increase in weight, and no more than 2 % increase in any

physical dimension when tested as specified in 4.3.1.2.

3.3.1.3 Impact resistance. Twenty-four hours or more after manufacture, a battery container shall remain undamaged by impacts of a 1 kilogram (kg) solid steel ball dropped from the heights indicated in table II after four hours of pre-test conditioning at temperatures in table II (see 4.3.1.3).

TABLE II. Impact resistance.

Pre-test conditioning temperature	Drop height of 1 kg weight
66°±3°C	2100 mm
-18°±3°C	1400 mm
-40°±3°C	700 mm

3.3.1.4 Bulge resistance. The battery container shall exhibit no more than a 6.4 mm bulge at 93°±3°C when filled with polyethylene glycol and measured as specified in 4.3.1.4.

3.3.2 Battery cover. The battery cover with the venting system installed shall be flat, with no raised portions except for the terminals and shall be sealed to the container. The battery cover and battery container base shall be parallel within 1.5 mm total. The joint between the battery container and battery cover shall maintain a water-tight and air-tight seal under all test conditions specified herein. A caution and prohibition against opening and removal of vent cover(s) shall be permanently marked either on the battery cover top, or on each vent cover. The battery container and cover shall be the same color and made of the same material, and the battery cover shall meet the same physical requirements as the battery container as specified in 3.3.1.2 and 3.3.1.3 (see 4.3.2 and 4.5.1).

3.3.3 Post seals. Post seals shall maintain an unbroken seal between the posts and the battery cover and shall maintain a water-tight and air-tight seal under all test conditions specified herein (see 4.5.1).

3.3.4 Vents. Non-removable vent assemblies or vent assembly covers shall be provided. When tested as specified in 4.3.3.1, the vent(s) shall withstand temperatures from -54°C to 91°C without cracking, melting or other damage. The vents shall not leak more than two drops of water in 10 seconds when the upper side of each vent is subjected to a water pressure which exceeds the air pressure on the lower side by 12.07 kPa. Vents shall not permit ignition of flammable gasses when tested in accordance with SAE J1495 (see 4.3.3.2).

3.3.5 Terminal posts. Terminal posts shall be concentric tapered posts of the design and location specified on figure 3 and figure 6. The positive tapered terminal post shall be identified by a "+", a "POS", or a "P" and the negative terminal by a "-", a "NEG", or an "N" as shown on figure 3 (see 4.5.1). Terminal material shall be compatible with use of standard vehicle lead acid battery clamps and cables.

3.3.5.1 Terminal post torque. The tapered terminal posts shall withstand torque up to 28.25 Newton-meter (Nm) without deforming, spinning, or twisting. Observation shall also be made for evidence of damage to the seal between the posts and the battery cover. See 4.3.4 for

verification method.

3.3.6 Handles. Handles shall be fabricated from flexible material of the developed length specified in figure 6. A more rigid, acid resistant, removable handle may be offered as an option, provided it does not exceed the length or width of the envelope of the handle attachment points on each side of the battery, nor the height of the battery case, and provided that it meets all the other physical requirements for the handles. Handles and attachments shall be undamaged after supporting the weight of a test battery after saturation with electrolyte and testing in accordance with 4.3.5 at temperatures of  $88^{\circ}\pm 3^{\circ}\text{C}$  and  $-48^{\circ}\pm 3^{\circ}\text{C}$ . If knots are used to secure a plastic rope handle, they shall be attached in a manner to prevent untying, and rope ends shall be sealed to prevent fraying (see 4.5.1).

3.3.7 CARC paint and primer compatibility. When tested as specified in 4.3.6, the battery shall not be damaged or degraded by the application or over-spray of Chemical Agent Resistant Coating (CARC) paints identified under MIL-DTL-64159 and MIL-DTL-53039.

3.3.8 Electrical resistance compatibility. New, fully charged batteries shall have an internal resistance of  $2.0\pm 0.6$  milliohms ( $\text{m}\Omega$ ) (see 4.3.7).

### 3.4 Environmental requirements.

3.4.1 Extreme temperature. Batteries shall show no cracking or other degradation of any component, and/or other damage due to temperature change between  $88^{\circ}\text{C}$  and  $-54^{\circ}\text{C}$ . The reserve capacity shall not decrease more than 10% from the requirement shown in table I (see 4.4.1).

3.4.2 High temperature cycling. Batteries shall withstand not less than 200 discharge/charge cycles (see 4.4.2).

3.4.3 Vibration. Batteries shall maintain a steady voltage and current with no loosening of terminal posts in the cover, flooding of electrolyte at the top; inter-cell leakage; excessive sediment; broken connections; straps or plates; broken or defective separators; or other damage when tested as specified in 4.4.3. Vibration shall not decrease the reserve capacity of batteries below that specified in table I.

### 3.5 Support or ownership requirements.

3.5.1 Identification and marking. Identification marking (see 6.2) shall be applied to each battery with a permanent, electrolyte-resistant type decal, label or nameplate, placed on battery container as shown in figure 2 through figure 5. Labels and nameplates shall be securely and permanently attached to the battery. The manufacturer's standard warning label regarding the hazards of acid and explosive gasses shall be attached in a conspicuous place on each battery (see figure 3). A specific warning label shall be attached to the battery cover prohibiting removal of the vent covers (see figure 3). A label with removable tabs for identifying the "in-service" date (month and year) shall be provided on the battery top (see figure 3). A label with the information specified in 3.5.1.1 shall be provided on the front side of the battery (see figure 4). A label shall

be provided on the side designating battery identification (see figure 5 and 6.5). The lot number shall be placed on the battery top in accordance with SAE AS478 (see 4.5.1). A label with the information specified in 3.5.1.2 shall be placed on the battery top (see figure 8).

3.5.1.1 Identification data. Unless otherwise specified in the contract, identification marking shall include the following:

- a. Battery identification (6TAGM or 6TGEL) (see 6.5).
- b. Designation (Military and SAE, when applicable).
- c. Manufacturer's battery part number.
- d. Voltage: 12 volts.
- e. Reserve capacity at 27°C (see table I).
- f. Low temperature capacity at -18°C and -40°C (see table I).
- g. Contract or order number.
- h. Date of manufacture (month and year) and lot number
- i. Manufacturer's CAGE code.
- j. NSN.
- k. Marked "NONSPILLABLE" or "NONSPILLABLE BATTERY".
- l. Unique Serial Number.

3.5.1.2 Maintenance advisory tag. Unless otherwise specified in the contract, maintenance advisory marking shall include the following (see figure 8):

- a. Marked "\*\*\*RECOVERABLE ITEM\*\*\*".
- b. Marked "ESTIMATED 3 YEAR MINIMUM SERVICE LIFE".
- c. Marked "DO NOT DISPOSE WITHOUT CHARGING AND RETESTING IAW TB 9-6140-252-13".
- d. Marked "USE OF APPROVED TESTING AND CHARGING EQUIPMENT IS REQUIRED".
- e. Box marked "INSTALL DATE (MM/YY)". This marking shall be visible when installed in a vehicle (see figure 3).

f. Box marked "CHECK IF RETEST FAILS".

g. Yellow Background.

3.5.2 Workmanship. Batteries shall be processed in such a manner as to be uniform in quality and free of defects that will affect their life, serviceability, or appearance. Containers and covers shall be free of cracks, leaks, and broken parts. Marking shall be clear and distinct (see 4.5.1).

3.5.3 Special requirements for "non-spillable" batteries. Regardless of country and place of manufacture, each battery shall comply with 49 CFR 173.159, in accordance with the requirements for "non-spillable" batteries. Certification testing shall be performed or, with prior Government approval, certified to the non-spillable test requirements of 49 CFR 173.159 (see 4.5.1 and 4.5.2). Each battery shall also conform to the following documents:

a. IATA DGR.

b. ICAO 9284.

c. IMO IMDG.

### 3.6 Operating requirements.

#### 3.6.1 Capacities.

3.6.1.1 Full charge capacity. Each fully charged battery shall yield a capacity of not less than that specified in table I when tested as specified in 4.6.1.1.

3.6.1.2 Reserve capacity. Fully charged batteries stabilized at  $27^{\circ}\pm 3^{\circ}\text{C}$  shall yield reserve capacity minutes no less than that specified in table I when tested as specified in 4.6.1.2.

3.6.1.3 Low temperature capacity. Fully charged batteries, when discharged at rates specified in table I, shall exhibit a minimum terminal voltage of 7.2V when tested as specified in 4.6.1.3.

3.6.1.4 Deep cycle capacity. Batteries shall withstand not less than 120 deep discharge/charge cycles (see 4.6.1.4).

3.6.2 Retention of charge. Following not less than 90 calendar days storage at  $40^{\circ}\pm 5^{\circ}\text{C}$ , batteries shall yield reserve capacity minutes no less than that specified in table I, when tested as specified in 4.6.2.

3.6.3 Electrolyte retention. Batteries shall not show evidence of leakage when tilted  $90^{\circ}$  and held for 30 minutes in each of two directions as specified in 4.6.3. This test shall be performed immediately following the vibration test specified in 4.4.3.



3.6.4 Life-cycle capacity. Batteries shall withstand not less than 360 discharge/charge cycles (see 4.6.4).

3.6.5 Deep discharge recovery. The battery shall meet the requirements shown in table I for full charge capacity, when tested as specified in 4.6.5.

3.6.6 Overcharge/thermal runaway. When tested as specified in 4.6.6 the battery shall meet the following requirements:

- a. The current drawn during the final charge (at  $14.5 \pm 0.1$  V) shall not exceed 16 amperes.
- b. No flame shall issue from the battery either during or within three hours following the completion of testing.
- c. The battery case shall contain all debris resulting from any explosion during or after the test.
- d. There shall be no escape of electrolyte other than from the designated vent pipes.
- e. Venting shall occur only from the designated vent pipes.

3.6.7 Battery shelf life. In order to maintain qualification, successful completion of the shelf life test of 4.6.7 shall be required. The battery shall be capable of storage at controlled temperature conditions at  $22^\circ \pm 5^\circ \text{C}$  for not less than 24 months without damage. The capacity shall be not less than 115 minutes (50 percent of required reserve capacity value) when subjected to the test of 4.6.7. For initial qualification effort, the retention of charge test of 4.6.2 will be utilized for initial verification of the battery's capability of meeting the shelf life requirement. The Government reserves the right to perform the 24 month shelf life test of 4.6.7 within the specified temperature range and remove the battery from the Qualified Products List if the battery fails to meet the 115 minute discharge requirement.

#### 4. VERIFICATIONS

4.1 Classification of inspections. The inspection requirements specified herein are classified as follows:

- a. Qualification inspection (see 4.1.1).
- b. Conformance inspection (see 4.1.2).
  - (1) Initial Production Inspection (IPI) (see 4.1.2.1).
  - (2) Periodic Production Inspection (PPI) (see 4.1.2.2).

4.1.1 Qualification inspection. Sample batteries and component parts shall be furnished for qualification inspection. Quantities and component parts shall be as specified in table III. Qualification inspection shall consist of each and all of the testing and inspections identified in table IV, assignment of test samples specified in table V. Qualification inspection shall be conducted at a place designated by, or approved by, the Government. Nonconformance to any specified requirement, the failure of any test, or the presence of one or more defects shall be cause for rejection and constitute failure of qualification inspection and prohibit incorporation of product into any QPL. Unless otherwise specified in a contract or purchase order, the successful completion and approval by the Government of qualification inspection does not relieve a prospective contractor from required samples and IPI requirements from the first production lot using production design, tooling, and processes, at a location designated or approved by the Government Engineering Support Activity (ESA) (see 3.1 and 6.6).

4.1.2 Conformance inspection.

4.1.2.1 Initial production inspection (IPI). Unless otherwise specified in the contract or order (see 6.2) the contractor shall perform all IPI tests and inspections on production batteries consisting of test samples from the first production lot using production design, tooling, and processes, at a place designated or approved by ESA having approval and waiver authority. Quantities and component parts shall be as specified in table III. IPI shall be conducted in accordance with the test requirements specified in table IV, assignment of test samples specified in table V, and the descriptive paragraphs in Section 4 of this specification. Nonconformance to any specified requirement of this specification; the failure of any test; or the presence of one or more defects shall be cause for rejection.

TABLE III. Qualification/IPI inspection samples.

Sample description	Quantity required	
	Qualification	IPI
Batteries, complete	14	14
Container	6	none
Covers (with vents)	5	1

4.1.2.2 Periodic production inspection (PPI). PPI shall be done by the contractor (with government oversight) by using one of the two following methods.

4.1.2.3 PPI method #1. Samples shall be selected at the rate of three fully completed batteries per each production lot. One battery will represent each group shown and shall be tested by the contractor as shown in table VI of each group. When production lots exceed 5000 per week, three additional test samples shall be selected and tested.

4.1.2.4 PPI method #2. Samples shall be selected from completed batteries each production day as detailed in table VII, and tested by the contractor according to the requirements of table VI for each group. Once tests are successfully completed for all of each group (A, B, C) of table VII, production lots from those days may be released prior to completion of testing on all group A batteries provided all other examinations/tests are acceptable.

4.1.2.5 PPI general requirements. Examination and testing for each lot shall be completed no later than 21 days from the final day of manufacture of the lot.

4.1.2.6 PPI failures. Failure of any sample during examination or testing may be cause for the Government to refuse to accept that lot, and subsequent lots, until it has been proven to the Government's satisfaction that appropriate corrective actions have been implemented.

TABLE IV. Inspection requirements.

Title	Requirement	Verification	Qualification	Conformance	
				IPI	PPI
Materials and manufacturing	3.2	4.7	X		
Defects	3.3, 3.3.2, 3.3.3, 3.3.5, 3.3.6, 3.5.1, 3.5.1.1, 3.5.2 & 3.5.3	4.5.1	X	X	X
Interface and interoperability	3.3	4.3 & 4.5.1	X		
Containers	3.3.1				
Electrical breakdown	3.3.1.1	4.3.1.1	X		
Acid absorption	3.3.1.2	4.3.1.2	X		
Impact resistance	3.3.1.3	4.3.1.3	X		
Bulge resistance	3.3.1.4	4.3.1.4	X		
Battery cover	3.3.2	4.3.2 & 4.5.1	X		
Post seals	3.3.3	4.5.1	X	X	
Vents	3.3.4	4.3.3.1 & 4.3.3.2	X	X	
Terminal posts	3.3.5	4.5.1	X		
Terminal post torque	3.3.5.1	4.3.4	X	X	X
Handles	3.3.6	4.3.5 & 4.5.1	X	X	
CARC paint and primer compatibility	3.3.7	4.3.6	X		
Electrical resistance compatibility	3.3.8	4.3.7	X	X	X
Environmental	3.4				
Extreme temperature	3.4.1	4.4.1	X	X	
High temperature cycling	3.4.2	4.4.2	X	X	
Vibration	3.4.3	4.4.3	X	X	
Support or ownership	3.5				
Identification and marking	3.5.1	4.5.1	X		
Identification data	3.5.1.1	4.5.1	X		
Workmanship	3.5.2	4.5.1	X	X	X
Special requirements	3.5.3	4.5.1 & 4.5.2	X		
Operating	3.6				
Capacities	3.6.1				
Full charge capacity	3.6.1.1	4.6.1.1	X	X	X
Reserve capacity	3.6.1.2	4.6.1.2	X	X	X
Low temperature capacity	3.6.1.3	4.6.1.3	X	X	X
Deep cycle capacity	3.6.1.4	4.6.1.4	X	X	
Retention of charge	3.6.2	4.6.2	X	X	
Electrolyte retention	3.6.3	4.6.3	X	X	
Life-cycle capacity	3.6.4	4.6.4	X	X	
Deep discharge recovery	3.6.5	4.6.5	X	X	
Overcharge/thermal runaway	3.6.6	4.6.6	X	X	

TABLE V. Assignment of test samples.

Title	Sample number	Requirement	Verification
Electrical breakdown	CT6	3.3.1.1	4.3.1.1
Acid absorption	CT1/CV1	3.3.1.2	4.3.1.2
Impact resistance	CT3-5/CV3-5	3.3.1.3	4.3.1.3
Bulge resistance	CT2	3.3.1.4	4.3.1.4
Battery cover	CV1, CV3-5	3.3.2	4.3.2
Vents	CV2	3.3.4	4.3.3.1
Flame Retardation	B12	3.3.4	4.3.3.2
Terminal post torque	B8	3.3.5.1	4.3.4
Handles	B8	3.3.6	4.3.5
Electrical resistance compatibility	B1–B14 (all)	3.3.8	4.3.7
Extreme temperature	B2/3	3.4.1	4.4.1
High temperature cycling	B11/8	3.4.2	4.4.2
Vibration	B2/3	3.4.3	4.4.3
Full charge capacity	B5/6	3.6.1.1	4.6.1.1
Reserve capacity	B1/2/3/4	3.6.1.2	4.6.1.2
Low temperature capacity	B1/2/3	3.6.1.3	4.6.1.3
Deep cycle capacity	B10/4	3.6.1.4	4.6.1.4
Retention of charge	B1	3.6.2	4.6.2
Electrolyte retention	B2/3	3.6.3	4.6.3
Life-cycle capacity	B7/9	3.6.4	4.6.4
Deep discharge recovery	B5/6	3.6.5	4.6.5
Overcharge/thermal runaway	B12/13/14	3.6.6	4.6.6

(B = Battery sample, CT = Container sample, CV = Cover sample.)

MIL-PRF-32143C

TABLE VI. PPI method #1.

Sample(s)	Description	Requirement	Verification
#1	<u>Group A tests:</u>		
	a. Electrical resistance compatibility	3.3.8	4.3.7
	b. Full charge capacity	3.6.1.1	4.6.1.1
	c. Terminal post torque resistance	3.3.5.1	4.3.4
#2	<u>Group B tests:</u>		
	a. Electrical resistance compatibility	3.3.8	4.3.7
	b. Low temperature capacity (-40°C only)	3.6.1.3	4.6.1.3
	c. Workmanship	3.5.2	4.5.1
#3	<u>Group C tests:</u>		
	a. Electrical resistance compatibility	3.3.8	4.3.7
	b. Reserve capacity	3.6.1.2	4.6.1.2
	c. Workmanship	3.5.2	4.5.1

TABLE VII. PPI method #2.

Day	Weekly production test group	Batteries
First	B, C	2
Second	B, C	2
Third	A	1
Fourth	A	1
Fifth	A	1
Sixth	A	1
Seventh	A	1

#### 4.2 Test conditions, schedules, special requirements and prohibitions.

4.2.1 Test conditions and tolerances for test conditions. Unless otherwise specified herein, all testing and examinations shall be conducted IAW the paragraphs on Standard Ambient Test Conditions and Tolerances for Test Conditions in Part One of MIL-STD-810, and SAE J537.

4.2.2 Schedule and sequence of tests. The order of testing for IPI will be established by the contractor and shall be approved by the Army ESA prior to start of any testing by the contractor. Advance planning and provisions shall be made to insure that each item of the test schedule and sequence shall not have a detrimental effect or preclude the performance of a subsequent test/examination on any test sample.

4.2.3 Advance notice of schedule. Appropriate advance notice of the test schedule, location(s), or changes shall be provided to the Government, contractor, designated test site/facility, and regulatory agency personnel to allow participation or oversight by each.

4.2.4 Prohibitions. The following are specifically prohibited.

- a. Lot sampling, Acceptable Quality Limits (AQL), or similar inspection and testing

schemes/methods.

b. Modeling and simulation for all tests and demonstrations.

4.2.5 Calibration of test equipment. Measuring equipment, fixtures, and additional electrical equipment required for battery testing shall meet or exceed the verifiable values stated by the Original Equipment Manufacturer (OEM) of the equipment, and the readable portion of the gauge or recording device (scales) shall not be less than the industry standard increments for the anticipated range of values and types of values for each test or series of tests.

4.2.6 Discharging and charging of test batteries.

4.2.6.1 Discharging. The fully charged battery shall be at a temperature of  $27^{\circ}\pm 3^{\circ}\text{C}$  and shall be discharged at the 20 hour rate (the current in amperes equal to 1/20th of the battery's rated ampere-hour capacity, also known as the C/20 Rate), to a final average terminal voltage equivalent to 1.75 V per cell, or 10.5 V total, unless otherwise specified.

4.2.6.2 Charging. The battery temperature is to be stabilized at  $27^{\circ}\pm 3^{\circ}\text{C}$  before charging commences. Batteries shall be charged using a constant voltage of  $14.25\pm 0.1$  V. The charge is to be terminated after 10 hours of charging or a maximum of 150% recharge, whichever occurs first. The charging supply shall be capable of providing 300 amps for all tests except life tests (50 amp supply for life tests).

4.2.6.3 Periodic recharging. If the testing on any activated battery is temporarily stopped for a period of 72 hours or more, the battery shall be given a freshening charge in accordance with the Government-approved contractor's procedures at the specified rate until fully charged (see 4.2.6.2) before testing is resumed. A test battery shall not be stored for more than 24 hours after a discharge without being recharged.

4.3 Interface and interoperability requirements verification. The general requirements of 3.3 shall be verified and demonstrated by tests and inspection of contractor records providing objective quality evidence that the design, construction, processing, and materials conform to requirements of this specification. Applicable records shall include one or more of the following: drawings, specifications, design data, receiving inspection records, processing and quality control standards, vendor catalogs and certifications, industry standards, test reports, and rating data.

4.3.1 Container tests.

4.3.1.1 Electrical breakdown test. To determine conformance to 3.3.1.1, the battery container (see 3.3.1) shall be filled with lead or aluminum shot or fitted with a close fitting mandrel or other electrode to within 12.5 mm of the top of the lowest point on the sides, ends, or partitions of the containers. An alternating current potential of 100 V rms per  $2.54 \times 10^{-2}$  mm of thickness shall be applied for 15 seconds after full calculated voltage has been reached. Voltage shall be supplied by a transformer of not less than 1/2 kilo-volt-ampere capacity, using the electrodes in a manner that will subject each outer wall and inner partition of the container to the

electrode potential. Containers shall subsequently be examined for leaks, imperfections, or other evidence of perforation or burn-through.

4.3.1.2 Acid absorption test. To determine conformance to 3.3.1.2, two specimens, each 76 by 76 mm, shall be cut from the partitions of the container. If specimens that size can't be taken from the cover, use the largest samples possible from the cover. After being measured with calipers and weighed in the dry condition at  $27^{\circ}\pm 6^{\circ}\text{C}$ , each specimen shall be immersed in a covered vessel containing 150 cubic centimeters (cc) of electrolyte with a minimum of 49.5% sulfuric acid, Chemical Abstract Service # 7664-93-9. The electrolyte shall have a specific gravity in the range of 1.3945 to 1.4042 at  $15.6^{\circ}\text{C}$ . The vessel shall be held for seven days in an oven at  $66^{\circ}\pm 3^{\circ}\text{C}$ . At the end of the heating period, the specimens shall be inspected for evidence of cracks or blisters and then measured and weighed. The percentage increase in dimensions and weight shall be calculated.

4.3.1.3 Impact resistance test. To determine conformance to 3.3.1.3, an undamaged specimen container shall be permitted to rest no less than 24 hours after manufacture. Before testing, the sample shall be conditioned for four hours at each test temperature. The test temperatures shall be  $66^{\circ}\pm 3^{\circ}\text{C}$ ,  $-18^{\circ}\pm 3^{\circ}\text{C}$ , and  $-40^{\circ}\pm 3^{\circ}\text{C}$ . Impact resistance shall be determined by a 1 kg solid steel ball, used as a free falling weight. The impact resistance shall be found by dropping the weight at the height necessary to produce the minimum impact resistance requirement for the test temperature (see table II). The weight shall hit the container only once for each drop. During the test, the container shall be positioned on a flat steel plate, about 25 mm longer and wider than the container. The container shall be positioned in such a manner that the ball will strike 1/3 down from the top of the container on the centerline of the sides of each cell and on the center of each cell cover area (where thickness is uniform). Testing of post cells is not required. Any cracking or deformation of the container shall constitute failure.

4.3.1.4 Bulge resistance test. To determine conformance to 3.3.1.4, the bulge resistance of the container shall be measured and determined as follows:

- a. Place an empty container, to be tested, in an appropriate rigid metal tray.
- b. Fill the container to within 25 mm of the top with commercial grade polyethylene glycol at a temperature of  $93^{\circ}\pm 3^{\circ}\text{C}$ .
- c. Place the tray, containing the container, to be tested, in an oven and maintain the polyethylene glycol at  $93^{\circ}\pm 3^{\circ}\text{C}$ .
- d. When the liquid in the end cell adjacent to the end wall, to be measured, reaches a temperature of  $93^{\circ}\pm 3^{\circ}\text{C}$ , start a one hour soak time.
- e. At the end of the soak period, remove the tray containing the container being tested, from the oven and within five minutes, measure the end wall bulge, using the slider arrangement. The polyethylene glycol is to remain in the test container until the completion of the measurements.



f. The bulge shall be determined by comparing the center of the end wall with the plane of the four corners exposed. The center of the end wall is defined as a point halfway between the horizontal parting line at the bottom and the bottom of the top band.

g. Bulge is to be reported as the difference as determined in subparagraph f. Bulge in excess of 6.3 mm constitutes failure.

4.3.2 Battery cover tests. To determine conformance to 3.3.2, battery covers shall be tested as specified in 4.3.1.2 and 4.3.1.3 with appropriate modifications in samples and procedures. Results shall be evaluated as specified in referenced paragraphs.

4.3.3 Vent tests.

4.3.3.1 Vent thermal resistance and water pressure test. To determine conformance to 3.3.4, a cover with vent plugs installed shall be placed in an ambient air temperature of  $-48^{\circ}\pm 3^{\circ}\text{C}$  for two hours. At the end of the cooling period, the cover assembly shall be removed and immediately placed in an oven at an ambient air temperature of  $91^{\circ}\pm 3^{\circ}\text{C}$  for 90 minutes. They shall then be removed and inspected for evidence of damage such as cracking or melting. After a cooling period of one hour, pressurize each vent by placing an air tight fixture over the top side of the vents and applying water pressure. Using this fixture, the upper side of each vent shall be subjected to a water pressure which exceeds the air pressure on the lower side by 12.07 kPa. The number of drops of water that leaks through each vent/filler plug and the time required therefore (not to be less than one minute) shall be recorded.

4.3.3.2 Flame retardation test. To determine conformance to 3.3.4, battery and vent(s) shall be tested for flame retardation in accordance with SAE J1495.

4.3.4 Terminal post torque test. To determine conformance to 3.3.5.1, mark each terminal post with a straight, vertical line along the side of the terminal post that extends onto the cover of the battery. An increasing torque up to 28.25 Newton-meters (N-m) shall be applied in a direction perpendicular to the axis of the terminal posts and parallel to the top of the battery by a torque indicating device, through a fitting battery terminal or other clamping device. The torque shall be performed in both a clockwise and a counter-clockwise direction. Observation shall be made for evidence of rotation of the terminal post.

4.3.5 Handle test. To determine conformance to 3.3.6, the handle and bond areas shall be saturated with an electrolyte with a minimum of 49.5% sulfuric acid, Chemical Abstract Service # 7664-93-9, and air dried twice daily for two days. The electrolyte shall have a specific gravity in the range of 1.3945 to 1.4042 at  $15.6^{\circ}\text{C}$ . The handles and bond areas shall again be saturated with electrolyte and the battery placed in an ambient air temperature of  $88^{\circ}\pm 3^{\circ}\text{C}$  for 60 minutes, allowed to cool to room temperature, and again heated at  $88^{\circ}\pm 3^{\circ}\text{C}$  for 60 minutes. The battery shall then be removed from the oven and immediately placed in a test fixture similar to figure 1. The battery shall be initially set on the removable support, and the angles and initial tautness of the handles shall be set with the support in place. The ballast weight, equal to the weight of the test battery, shall be placed on top of the battery. The support shall then be slowly removed and the battery and weight be allowed to hang freely by the handles for 60 seconds. The battery shall then be removed and the handles and bond shall be examined for conformance to 3.3.6. After the

battery has been placed in an ambient air temperature of  $-48^{\circ}\pm 3^{\circ}\text{C}$  for 24 hours, the test shall be repeated at  $-48^{\circ}\pm 3^{\circ}\text{C}$ .

4.3.6 CARC paint and primer tests. To determine conformance to 3.3.7, the exterior surfaces and mating joints of empty containers and covers, or sample coupons of production container and cover materials, shall be coated with CARC paint and primers in accordance with MIL-DTL-64159 and MIL-DTL-53039. The exterior surfaces and mating joints of the test samples shall be examined to assure that no surface or mating joint demonstrates joint sealing failures, interior deformation, surface degradation, or shrinkage has occurred as a result of the CARC exposure/coating after 12, 24, 72, and 168 hour periods.

4.3.7 Electrical resistance compatibility test. To determine conformance to 3.3.8 new, fully charged specimens shall be tested with a commercially available meter, and shall exhibit an internal resistance of  $2.0\pm 0.6\text{ m}\Omega$ .

#### 4.4 Environmental requirements verification.

4.4.1 Extreme temperature test. To determine conformance to 3.4.1, batteries shall be subjected to two thermal shock cycles. The following procedure for one cycle shall be used:

- a. Perform reserve capacity test in accordance with 4.6.1.2.
- b. Battery shall be placed in an ambient air temperature of  $-54^{\circ}\pm 3^{\circ}\text{C}$  for 24 hours, or until battery is stabilized.
- c. The battery shall then be placed in an ambient air temperature of  $88^{\circ}\pm 3^{\circ}\text{C}$  for 24 hours.
- d. The battery shall be allowed to cool gradually to  $27^{\circ}\pm 3^{\circ}\text{C}$  for 24 hours.
- e. Perform reserve capacity test per 4.6.1.2, a decrease in reserve capacity of more than 10% from values in table I constitutes a failure.

4.4.2 High temperature cycling test. To determine conformance to 3.4.2, high temperature cycling shall consist of a series of normal and capacity check discharge and charge cycles. A normal cycle shall consist of a one hour discharge at 40 amperes and five hours charge at  $14.25\pm 0.1\text{ V}$ . A capacity check cycle shall consist of a discharge at 40 amperes until a final average terminal voltage of 1.75 volts per cell (10.5 V per battery) has been reached, and then fully charge in accordance with 4.2.6.2 (except at  $65^{\circ}\pm 3^{\circ}\text{C}$ ). The high temperature cycling test shall be conducted as follows:

- a. Immediately prior to the beginning of the test, the battery shall be fully charged as specified in 4.2.6.2.
- b. The battery shall be placed in an environmental chamber or water bath with the temperature maintained at  $65^{\circ}\pm 3^{\circ}\text{C}$ .

- c. Conduct normal cycles at the specified discharge and charge rate.
- d. If the cell/battery voltage drops below 1.75/10.5 V during the one-hour discharge of a normal cycle, that cycle and all following cycles shall not be counted unless the test item passes the capacity check cycle.
- e. After 24 normal cycles, a capacity check cycle shall be conducted.
- f. The ampere-hour capacity shall be calculated as the product of the current rate in amperes and the time of discharge in hours in accordance with capacity cycle discharge.
- g. If the ampere-hour capacity is above 40% of the full charge capacity (see table I), the test shall continue by repeating steps d and e until the minimum number of required cycles has been met in accordance with 3.4.2. Total number of high temperature cycles shall be the sum of normal and capacity check cycles.
- h. If the ampere-hour capacity equals or drops below 40% of the full charge capacity (see table I) the battery shall be tested in accordance with 4.6.1.1. If the capacity is above 40% of full charge capacity (see table I) as determined by the full charge capacity test at 27°C, then the high temperature cycling test shall be resumed from step a. If the capacity equals or falls below 40% of full charge capacity (see table I) as determined by the full charge capacity test at 27°C, then the high temperature cycling test shall be terminated. Total number of high temperature cycles shall be the sum of any successful full charge capacity tests at 27°C, capacity check cycles prior to the last capacity check cycle not above 40% of the full charge capacity (see table I), and all normal cycles counted in accordance with step d.

4.4.3 Vibration test. To determine conformance to 3.4.3, the test specimen shall be stabilized, then subjected to the reserve capacity test per 4.6.1.2 a, b, and c, in an ambient air temperature of 27°±3°C prior to vibration. Apparatus shall include a hold down frame to bear on the top edges of the battery container, but not on the terminal posts. While in an ambient air temperature of 27°±3°C and mounted in the vibrating machine, the specimen shall be vibrated for two hours at a frequency of 33.3 to 35 Hz (2000 to 2100 cycles per minute) through an amplitude of 1.14 to 1.27 mm (total vertical excursion 2.28 to 2.54 mm). During this test the battery shall be discharged at the 20 hour rate. The test shall be repeated for one hour, except that the battery shall be chilled to a temperature of -40°±3°C for 16 to 24 hours immediately before beginning vibration. During the test, the battery shall be observed for maintenance of steady voltage and current, and thereafter examined for evidence of loosening of terminal posts in the covers and flooding of electrolyte at the top. The battery shall be removed from the vibrating machine, allowed to warm to 27°±3°C for 16 to 24 hours, then subjected to 4.6.1.2 a, b, and c. Or the vibration testing may be done in accordance with SAE J930.

#### 4.5 Support or ownership requirements verification.

4.5.1 Defects. Conformance to 3.3, 3.3.2, 3.3.3, 3.3.5, 3.3.6, 3.5.1, 3.5.1.1, 3.5.2 and 3.5.3 shall be determined by examination and testing for the defects. Examination shall be visual or by measurement with standard inspection equipment.

4.5.2 Special requirements for "non-spillable" batteries. A contractor-generated Certificate of Conformance (CoC) with supporting evidence may be acceptable to the ESA Procurement Contracting Officer (PCO) in lieu of the testing required by 3.5.3 if such certification has been performed and approved by the Army ESA office or another non-DoD Government activity within twelve (12) calendar months prior to award of the contract or initial delivery order by the procuring activity. In the absence of an ESA acceptable CoC, and in addition to any other test requirements of the IPI, the contractor shall provide and test six (6) additional batteries, as identified in (a) and (b) below.

- a. Three (3) each, vibration test in accordance with 49CFR.173.159.
- b. Three (3) each, pressure differential test in accordance with 49CFR.173.159.

#### 4.6 Operating requirements verification.

##### 4.6.1 Capacities.

4.6.1.1 Full charge capacity test at 27°C. To determine conformance to 3.6.1.1, the battery full charge capacity rating (ampere-hours) shall be determined as follows:

- a. Charge battery in accordance with 4.2.6.2 before each discharge.
- b. The temperature of the battery at the beginning of each discharge shall be  $27^{\circ}\pm 3^{\circ}\text{C}$ , and the temperature shall be maintained within this range by means of a water bath, or controlled air temperature condition, during discharge.
- c. Discharge battery in accordance with 4.2.6.1 to a terminal voltage of 10.5 volts. Record the discharge time, and calculate the ampere-hour capacity.
- d. Two (2) additional attempts are permitted of a through c to meet ampere-hour capacity requirements.
- e. The ampere-hour capacity obtained from each battery subjected to steps c or d shall represent the full charge capacity. Exception: If the ampere-hour capacity is met in step c or d, extra steps are not required.

4.6.1.2 Reserve capacity test. To determine conformance to 3.6.1.2, reserve capacity tests shall be conducted as follows:

- a. Charge battery in accordance with 4.2.6.2 before each discharge.
- b. The temperature of the battery at the beginning of each discharge shall be  $27^{\circ}\pm 3^{\circ}\text{C}$ , and the temperature shall be maintained within this range by means of a water bath, or controlled air temperature condition, during discharge.
- c. Discharge battery at  $25\pm 0.25$  amperes to a terminal voltage of 10.5 volts. Record the time of discharge in minutes.

d. Two (2) additional attempts of a. thru c. are permitted to meet reserve capacity requirement.

e. The longest time of discharge obtained from each battery subjected to steps c. and d. shall represent the reserve capacity of the battery. Exception: If the reserve capacity requirement is met in step c., or the first attempt in step d., further attempts shall not be required.

4.6.1.3 Low temperature capacity test. To determine conformance to 3.6.1.3, the test shall be performed as follows:

a. Charge battery in accordance with 4.2.6.2.

b. Place battery in cold chamber having a temperature of  $-40^{\circ}\pm 3^{\circ}\text{C}$ .

c. When the battery has stabilized for 24 hours at  $-40^{\circ}\pm 3^{\circ}\text{C}$ , immediately after removing from the cold chamber, the battery shall be discharged at the rate and time specified in table I.

d. At this time the voltage shall be measured to determine conformance to 3.6.1.3.

e. If a battery fails the test, it shall be retested. The retested battery shall be charged, discharged, and recharged again; all in accordance with 4.2.6. The battery will be retested as specified in a through d. Failure of a battery to pass this second cycle shall be considered as failure to meet the specified requirements.

f. Test as per 4.6.1.2.

g. Repeat steps a through e, except temperature shall be  $-18^{\circ}\pm 3^{\circ}\text{C}$  and discharge rate shall be at the rate and time specified in table I.

4.6.1.4 Deep cycle capacity test. To determine conformance to 3.6.1.4, deep cycle capacity test shall consist of a series of normal and capacity check discharge and charge cycles. A normal cycle shall consist of a one hour discharge at 40 amperes followed by a continuation discharge of 15 amperes until a final average terminal voltage of 1.75 volts per cell has been reached, then charged at  $14.70\pm 0.1$  V for 10 hours. A capacity check cycle shall consist of a discharge at 40 amperes until a final average terminal voltage of 1.75 volts per cell (10.5 V per battery) has been reached, and then fully charge in accordance with 4.2.6.2 (except at  $38^{\circ}\pm 3^{\circ}\text{C}$  and at 14.7 volts). The deep cycle capacity test shall be conducted as follows:

a. Immediately prior to the beginning of the test, the battery shall be fully charged as specified in 4.2.6.2.

b. The battery shall be placed in an environmental chamber or water bath with the temperature maintained at  $38^{\circ}\pm 3^{\circ}\text{C}$ .

c. Conduct 10 normal cycles at the specified discharge and charge rate.

d. After 10 normal cycles, a capacity check cycle shall be conducted.

e. The ampere-hour capacity shall be calculated as the product of the current rate in amperes and the time of discharge in hours in accordance with capacity check cycle discharge.

f. If the ampere-hour capacity is above 70% of the full charge capacity (see table I), the test shall continue by repeating steps c. through e. until the minimum number of required cycles has been met in accordance with 3.6.1.4. Total number of deep cycles shall be the sum of normal and capacity check cycles.

g. If the ampere-hour capacity equals or drops below 70% of the full charge capacity (see table I) the battery shall be tested in accordance with 4.6.1.1. If the capacity is above 70% of full charge capacity (see table I) as determined by the full charge capacity test at 27°C, then the deep cycle capacity test shall be resumed from step a. If the capacity equals or falls below 70% of full charge capacity (see table I) as determined by the full charge capacity test at 27°C, then the deep cycle capacity test shall be terminated. Total number of deep cycles shall be the sum of any successful full charge capacity tests at 27°C, capacity check cycles prior to the last capacity check cycle not above 70% of the full charge capacity (see table I), and all normal cycles prior to the last capacity check cycle not above 70% of the full charge capacity (see table I).

4.6.2 Retention of charge test. To determine conformance to 3.6.2, the retention of charge test shall be performed as follows:

- a. Charge battery as specified in 4.2.6.2.
- b. Perform reserve capacity test in accordance with 4.6.1.2.
- c. Charge battery as specified in 4.2.6.2.
- d. Place the battery in a circulating water bath or environmental chamber maintained at  $40^{\circ}\pm 3^{\circ}\text{C}$  for ninety (90) calendar days.
- e. After ninety (90) calendar days, remove the battery from the water bath or environmental chamber and cool it to  $27^{\circ}\pm 3^{\circ}\text{C}$  within 48 hours after removal from the bath or chamber. DO NOT RECHARGE BATTERY PRIOR TO NEXT STEP.
- f. Perform reserve capacity test per 4.6.1.2, except only one attempt with no recharge permitted.

4.6.3 Electrolyte retention test. To determine conformance to 3.6.3, the batteries shall be tilted through a 90 degrees ( $^{\circ}$ ) angle from a plane normal to the bottom of the battery along the major axis, held thus for 30 minutes and then similarly tilted and held along the minor axis. Batteries shall be observed for evidence of leakage, or spillage of electrolyte. No leakage is permissible. This test is to be performed immediately following the vibration test specified in 4.4.2.



4.6.4 Life-cycle capacity tests. To determine conformance to 3.6.4, life-cycle capacity tests shall consist of a series of normal and capacity check discharge and charge cycles. A normal cycle shall consist of a one hour discharge at 40 amperes and five hours charge at  $14.25 \pm 0.1$  V. A capacity check cycle shall consist of a discharge at 40 amperes until a final average terminal voltage of 1.75 volts per cell (10.5 V per battery) has been reached, and then fully charge in accordance with 4.2.6.2 (except at  $38^\circ \pm 3^\circ\text{C}$ ). The life-cycle capacity test shall be conducted as follows:

- a. Immediately prior to the beginning of the test, the battery shall be fully charged as specified in 4.2.6.2.
- b. The battery shall be placed in an environmental chamber with the temperature maintained at  $38^\circ \pm 3^\circ\text{C}$ .
- c. Conduct normal cycles at the specified discharge and charge rate.
- d. After 24 normal cycles, a capacity check cycle shall be conducted.
- e. The ampere-hour capacity shall be calculated as the product of the current rate in amperes and the time of discharge in hours in accordance with capacity cycle discharge.
- f. If the ampere-hour capacity is above 40% of the full charge capacity (see table I), the test shall continue by repeating steps c. through e. until the minimum number of required cycles has been met in accordance with 3.6.4. Total number of life-cycles shall be the sum of normal and capacity check cycles.
- g. If the ampere-hour capacity equals or drops below 40% of the full charge capacity (see table I) the battery shall be tested in accordance with 4.6.1.1. If the capacity is above 40% of full charge capacity (see table I) as determined by the full charge capacity test at  $27^\circ\text{C}$ , then the life-cycle capacity test shall be resumed from step a. If the capacity equals or falls below 40% of full charge capacity (see table I) as determined by the full charge capacity test at  $27^\circ\text{C}$ , then the life-cycling test shall be terminated. Total number of life-cycles shall be the sum of any successful full charge capacity tests at  $27^\circ\text{C}$ , capacity check cycles prior to the last capacity check cycle not above 40% of the full charge capacity (see table I), and all normal cycles counted in accordance with step d.

4.6.5 Deep discharge recovery. To determine conformance to 3.6.5, use the following procedure in a temperature controlled area at  $27^\circ \pm 3^\circ\text{C}$  to determine compliance.

- a. Charge the battery according to 4.2.6.2.
- b. Discharge in accordance with 4.2.6.1.
- c. Without recharging the battery, connect a resistor of 1 ohm between the battery terminals and store for 30 days in a temperature controlled area.

d. On the 31st day, remove the resistor and immediately recharge the battery at 15 volts, using a charger that provides a current not less than 50 amps. Monitor the battery temperature, and if the temperature exceed 120°F, the charger shall be turned off and the battery allowed to cool to 80°F prior to resuming the test.

e. Record the maximum ampere-hours that the battery accepted within 24 hours.

f. Finish recharging the battery according to 4.2.6.2.

g. Perform one (1) full charge capacity test per 4.6.1.1 (see table I).

4.6.6 Induced destructive overcharge test. WARNING: There is a possible risk of fire or explosion involved in performing this test. To determine conformance to 3.6.6, the battery shall be fully charged per 4.2.6.2, then it shall be further charged using a constant voltage power supply at a minimum of 3 volts per cell with the capability of supplying a current of at least 300 amps. A thermal runaway condition is to be induced and sustained to the point of total battery failure. Thermal runaway is indicated by:

a. A rise followed by a significant fall in the charging current drawn by the battery.

b. A substantial rise in the temperature of the battery.

The battery terminal voltage, charging current, and battery temperature shall be recorded throughout the test.

After the thermal runaway has ended, (i.e. after the charging current has diminished) let the battery rest open circuit for one hour, then charge the battery at a constant  $14.5 \pm 0.1$  volts for at least 30 minutes. The test shall be considered failed if the following criteria are not met:

a. The current drawn during the final charge (at  $14.5 \pm 0.1$  volts) shall not exceed 16 amperes.

b. No flame shall issue from the battery either during or within three hours following the completion of testing.

c. The battery case shall contain all debris resulting from any explosion during or after the test.

d. There shall be no escape of electrolyte from the battery case other than from designated vent pipes.

e. Venting shall occur only from the designated vent pipes.



4.6.7 Shelf life test. Constant potential charge the battery in accordance with 4.2.6.2. Store the battery for not less than 24 months in a controlled temperature environment  $22^{\circ}\pm 5^{\circ}\text{C}$ . Bring the battery to the test facility. DO NOT RECHARGE THE BATTERY. The temperature of the battery at the beginning of each discharge shall be  $27^{\circ}\pm 3^{\circ}\text{C}$ , and the temperature shall be maintained within this range by means of a water bath, or controlled air temperature condition, during discharge. Constant current discharge the battery at  $25.0\pm 0.25$  amperes to a terminal voltage of 10.5 volts. Record the time of discharge in minutes. Examine the battery for the requirements of 3.6.7.

4.7 Materials and manufacturing processes verification. Conformance to 3.2 shall be verified and demonstrated by inspection of contractor records providing objective quality evidence or certification that design, construction, processing, and materials conform to requirements. Applicable records shall include drawings, specifications, design data, receiving inspection records, processing and quality control standards, vendor catalogs and certifications, industry standards, test reports, and rating data.

## 5. PACKAGING

5.1 Packaging. For acquisition purposes, the packaging requirements shall be as specified in the contract or order (see 6.2). When packaging of materiel is to be performed by DoD or in-house contractor personnel, these personnel need to contact the responsible packaging activity to ascertain packaging requirements. Packaging requirements are maintained by the Inventory Control Point's packaging activities within the Military Service or Defense Agency, or within the military service's system commands. Packaging data retrieval is available from the managing Military Department's or Defense Agency's automated packaging files, CD-ROM products, or by contacting the responsible packaging activity.

## 6. NOTES

(This section contains information of a general or explanatory nature which may be helpful, but is not mandatory.)

6.1 Intended use. Batteries covered by this performance specification are intended primarily for starting, lighting, and ignition service in military vehicles of all types, internal combustion engine driven industrial trucks and tractors, construction equipment and generator sets. The batteries will also be used for radio operation and as a source of electrical energy for operating vehicular accessories, such as sighting and target ranging devices and control mechanisms. The battery's size and shape is controlled by a NATO Standardization Agreement (see 6.7), and batteries of this form factor are uniquely used by the military.

6.2 Acquisition requirements. Acquisition documents should specify the following:

- a. Title, number and date of this specification.
- b. Issue of ASSIST to be cited in the solicitation, and if required, the specific issue of individual documents referenced (see 2.2.1 and 2.3).

c. Any special marking requirements above those already specified by this specification (see 3.5.1).

d. If IPI is not required (see 4.1.2.1).

e. Special packaging requirements, other than those specified (see 5).

### 6.3 Subject term (key word) listing.

Acid resistance  
Atmospheric pressure  
Cold cranking amperes  
Thermoplastic material

### 6.4 Definitions.

#### 6.4.1 Definitions of terms used in inspection

a. Defective. A defective is a unit of product which contains one or more defects.

b. Formation of lots or batches. The product should be assembled into identifiable lots, sub-lots, batches, or in such other manner as may be prescribed. Each lot or batch should, as far as is practicable, consist of units of product of a single type, grade, class, size and composition, manufactured under essentially the same conditions, and at essentially the same time.

c. Lot or batch. The term lot or batch should mean "inspection lot" or "inspection batch", i.e., a collection of units or product from which a sample is to be drawn and inspected and may differ from a collection of units designated as a lot or batch for other purposes (e.g., production, shipment, etc.).

d. Lot or batch size. The lot or batch size is the number of units of product in a lot or batch.

e. Presentation of lots or batches. The formation of the lots or batches, lot or batch size, and the manner in which each lot or batch is to be presented and identified by the supplier should be designated or approved by the responsible authority. As necessary, the supplier should provide adequate and suitable storage space for each lot or batch, equipment needed for proper identification and presentation, and personnel for all handling of product required for drawing of samples.

f. Sample. A sample consists of one or more units of product drawn from a lot or batch, the units of the sample being selected at random without regard to their quality. The number of units or product in the sample is the sample size.

g. Time of sampling. Samples may be drawn after all the units comprising the lot or

batch have been assembled, or samples may be drawn during assembly of the lot or batch.

6.4.2 Recovered materials. "Recovered materials" means materials that have been collected or recovered from solid waste (see 3.2.1 and 6.4.3).

6.4.3 Solid waste. "Solid wastes" means (a) any garbage, refuse, or sludge from a waste treatment plant, water supply treatment plant, or air pollution control facility; and (b) other discarded material, including solid, liquid, semi-solid, or contained gaseous material resulting from industrial, commercial, mining and agricultural operations, and from community activities. It does not include solid or dissolved material in domestic sewage, or solid or dissolved material in irrigation return flows or industrial discharges which are point sources subject to permits under section 402 of the Clean Water Act (33 U.S.C. 1342 et seq.), or source, special nuclear, or by-product material and defined by the Atomic Energy Act of 1954 (42 U.S.C. 2011 et seq.) (Source: Federal Acquisition Regulations, section 23.402).

6.5 Battery identification. Batteries identification designations are "6TAGM" for Absorbed Glass Mat type batteries and "6TGEL" for gelled electrolyte type batteries (see 3.5.1.1 a. and figure 5).

6.6 Qualification. With respect to products requiring qualification, awards will be made only for products which are, at the time of award of contract, qualified for inclusion in QPL-32143 whether or not such products have actually been so listed by that date. The attention of the contractors is called to these requirements, and manufacturers are urged to arrange to have the products that they propose to offer to the Federal Government tested for qualification in order that they may be eligible to be awarded contracts or orders for the products covered by this specification. Information pertaining to qualification of products may be obtained from U.S. Army Tank Automotive Research, Development and Engineering Center, ATTN: Energy Storage Team, RDTA-RS, (MS #121), Warren, MI 48397-5000.

6.7 International standardization agreement implementation. This specification implements (STANAG 4015 "Starter Battery Spaces for Tactical Land Vehicles"). When amendment, revision, or cancellation of this specification is proposed, the preparing activity should coordinate the action with the U.S. National Point of Contact for the international standardization agreement, as identified in the ASSIST database at <https://assist.daps.dla.mil>.

6.8 Qualification / IPI and other test report submittals. Defense Contract Management Command (DCMC) oversight is required including comments and/or concurrence on the contractor's qualification report prior to submittal to the PCO, if test are not performed at an approved governmental facility.

6.9 Instruction tags and labels. Requirements for instruction tags and labels providing complete information for placing battery in service, operation and charging should be requested in the contract or order. These tags and labels should be attached in a conspicuous place on each battery.

6.10 Changes from previous issue. Throughout the last 30 years the specifications have become unaligned with the NATO specification. The dimensions have been changed to bring the 6T battery back into NATO specifications. The margins of this specification are marked with vertical lines to indicate where changes from the previous issue were made. This was done as a convenience only and the Government assumes no liability whatsoever for any inaccuracies in these notations. Bidders and contractors are cautioned to evaluate the requirements of this document based on the entire content irrespective of the marginal notations and relationship to the previous issue.

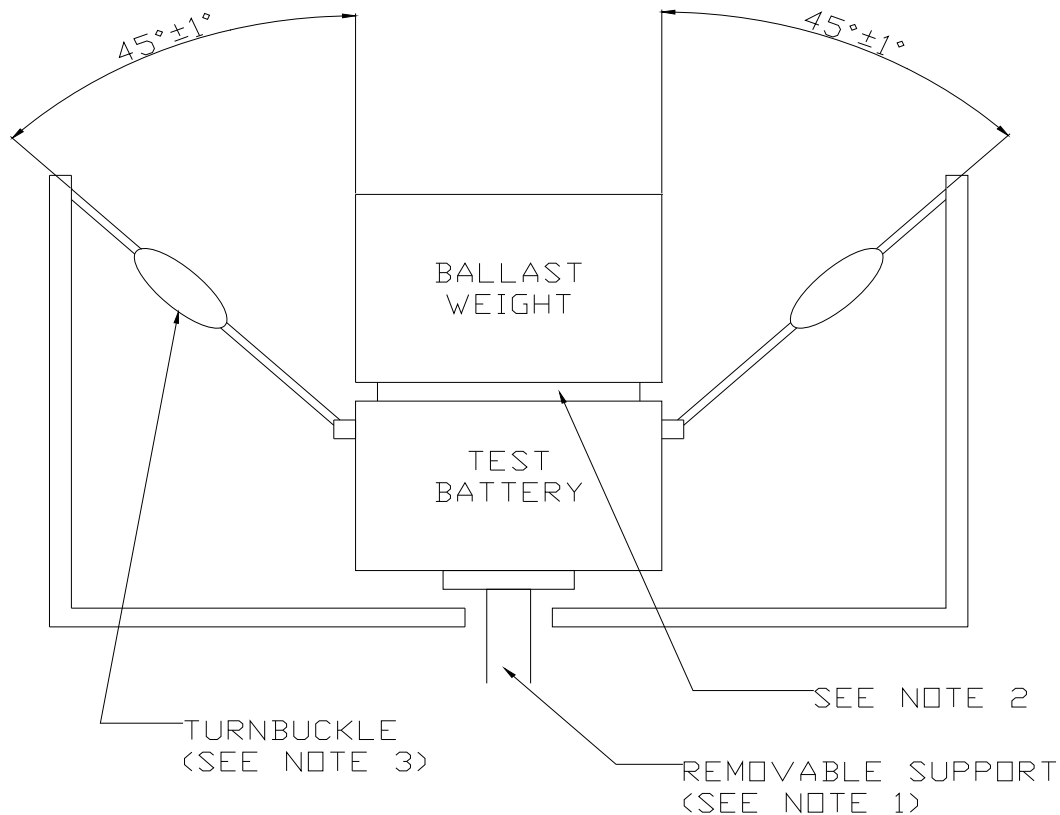
## INSPECTION VERIFICATION CHARACTERISTICS OF A VALVE REGULATED LEAD ACID, STORAGE BATTERY

### A.1 SCOPE

A.1.1 Scope. The appendix details the physical, environmental and performance of the VRLA storage battery. This Appendix is a mandatory part of the specification. The information contained herein is intended for compliance.

### A.2 NOTES

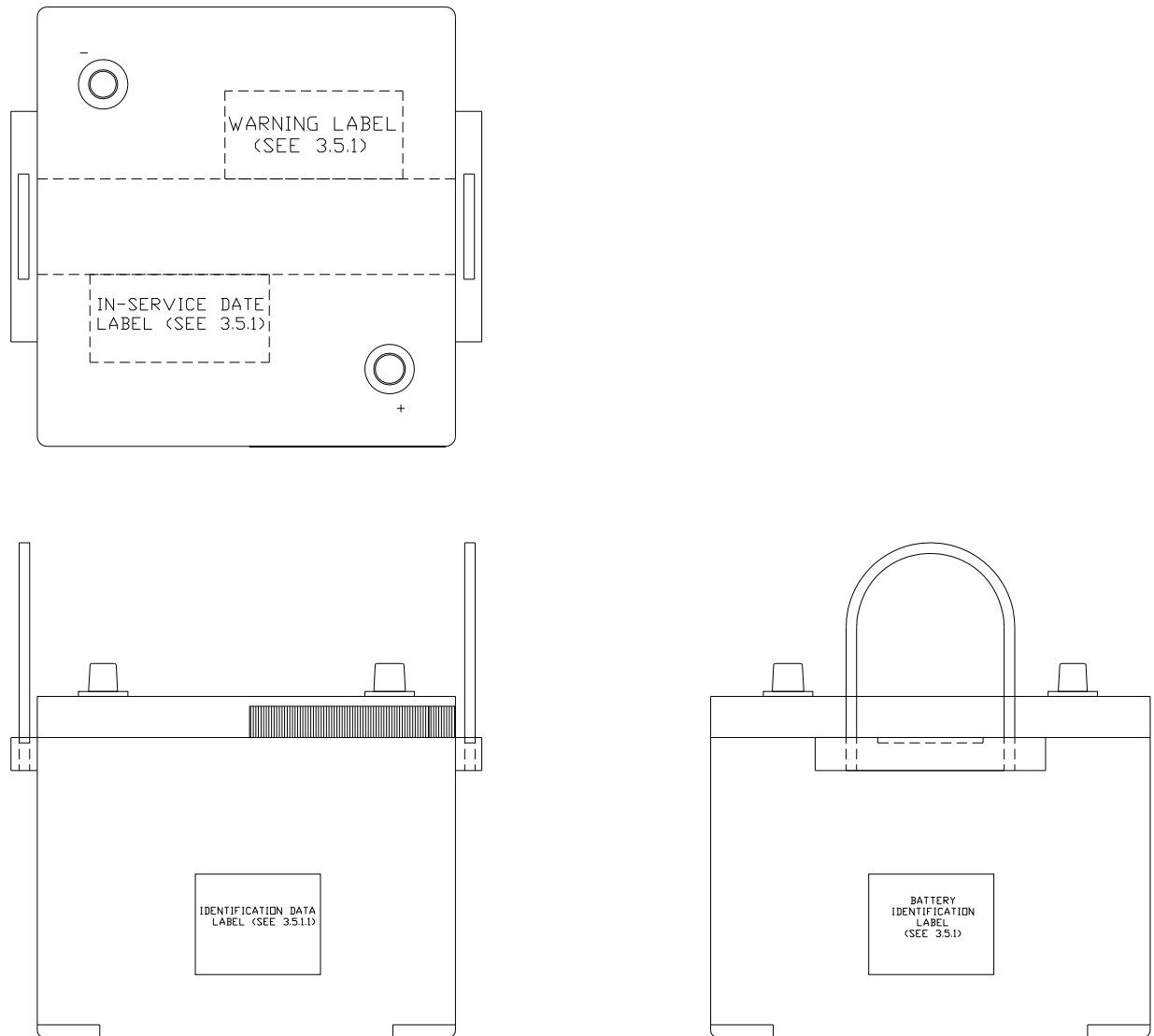
- a. Dimensions are in millimeters. Unless otherwise specified, tolerances at  $\pm 2.0$  mm.
- b. This performance specification is not intended to limit construction to features other than shown herein by dimensions, notations, or referenced documents.
- c. For design feature purposes, this standard takes precedence over procurement documents referenced herein.
- d. Certain provisions of this appendix which are identified by an asterisk (\*) are subject to international standardization agreements NATO STANAG 4015. When amendment, revision, or cancellation of this performance specification is proposed that will modify the international agreements concerned, the preparing activity will take appropriate action through international standardization channels, including departmental standardization offices, to change the agreement or make other appropriate accommodations.



NOTES:

1. Support shall allow gradual and even removal so as to minimize shock and insure even loading of both handles.
2. A lightweight (less than 1 kg) shim may be used between battery and weight to prevent damage to caps, posts or cover.
3. Turnbuckles shall be used to establish  $45^{\circ}$  angles of handles with test weight applied after removal of support. Turn buckles shall include a device to support rope handles over a length of 112 mm during test.

FIGURE 1. Handle test.

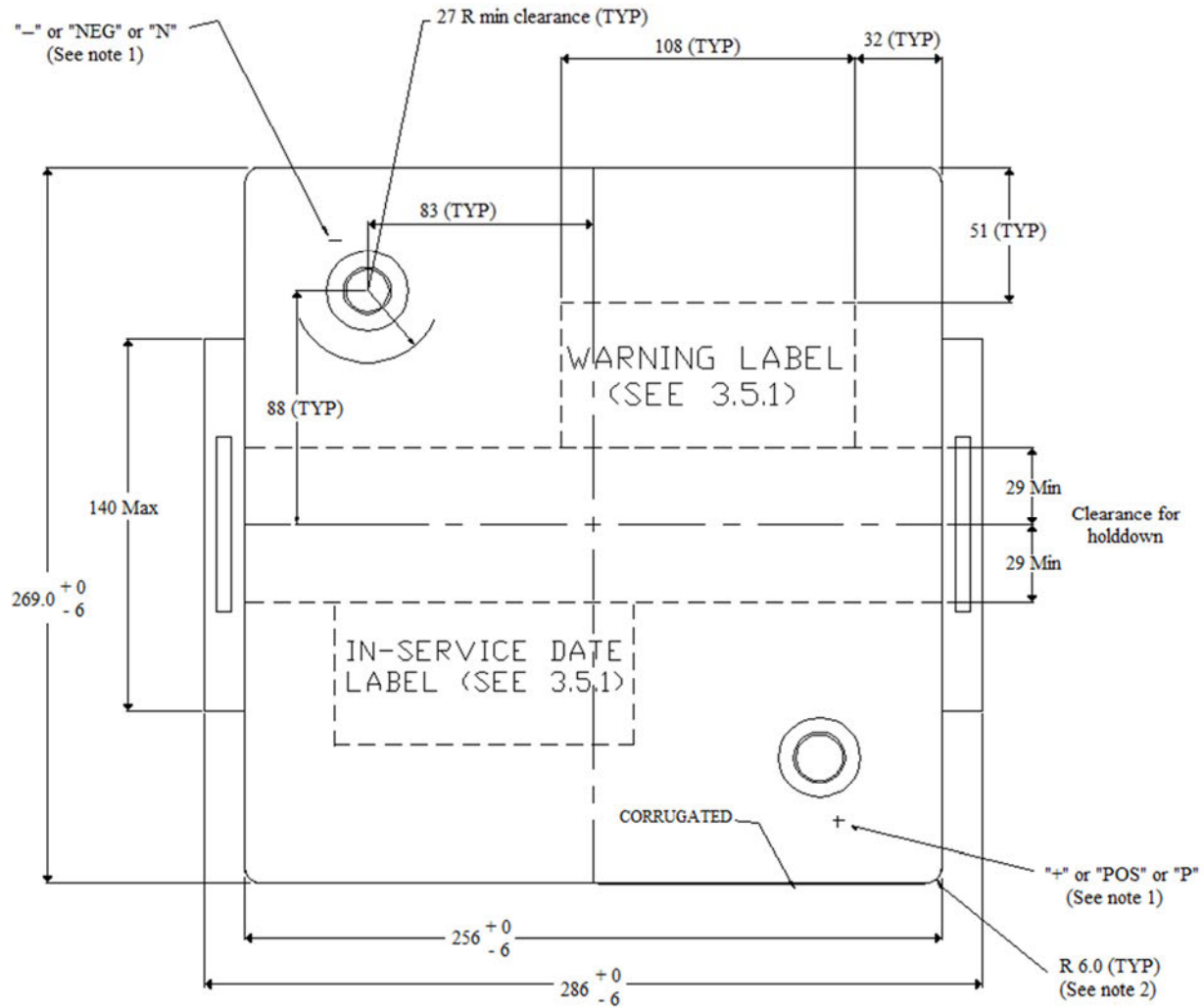


NOTE:

1. For details of construction see figure 3 through figure 7.

FIGURE 2. Battery overview.

MIL-PRF-32143C



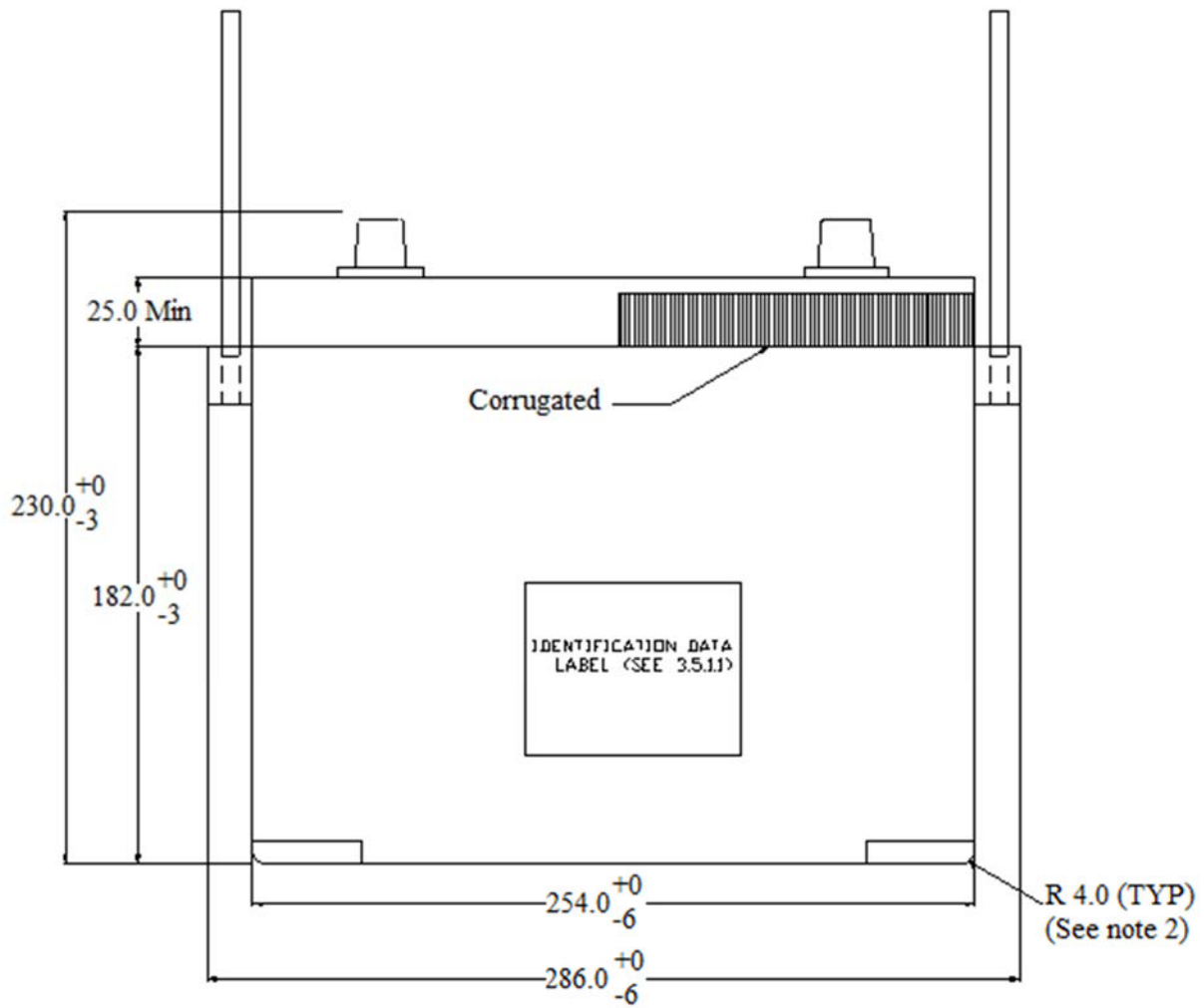
NOTES:

1. Polarity marking may be embossed on the top of tapered post.
2. Chamfer or continuous radius providing equivalent clearance is permitted.

FIGURE 3. Top view dimensions of battery.



MIL-PRF-32143C

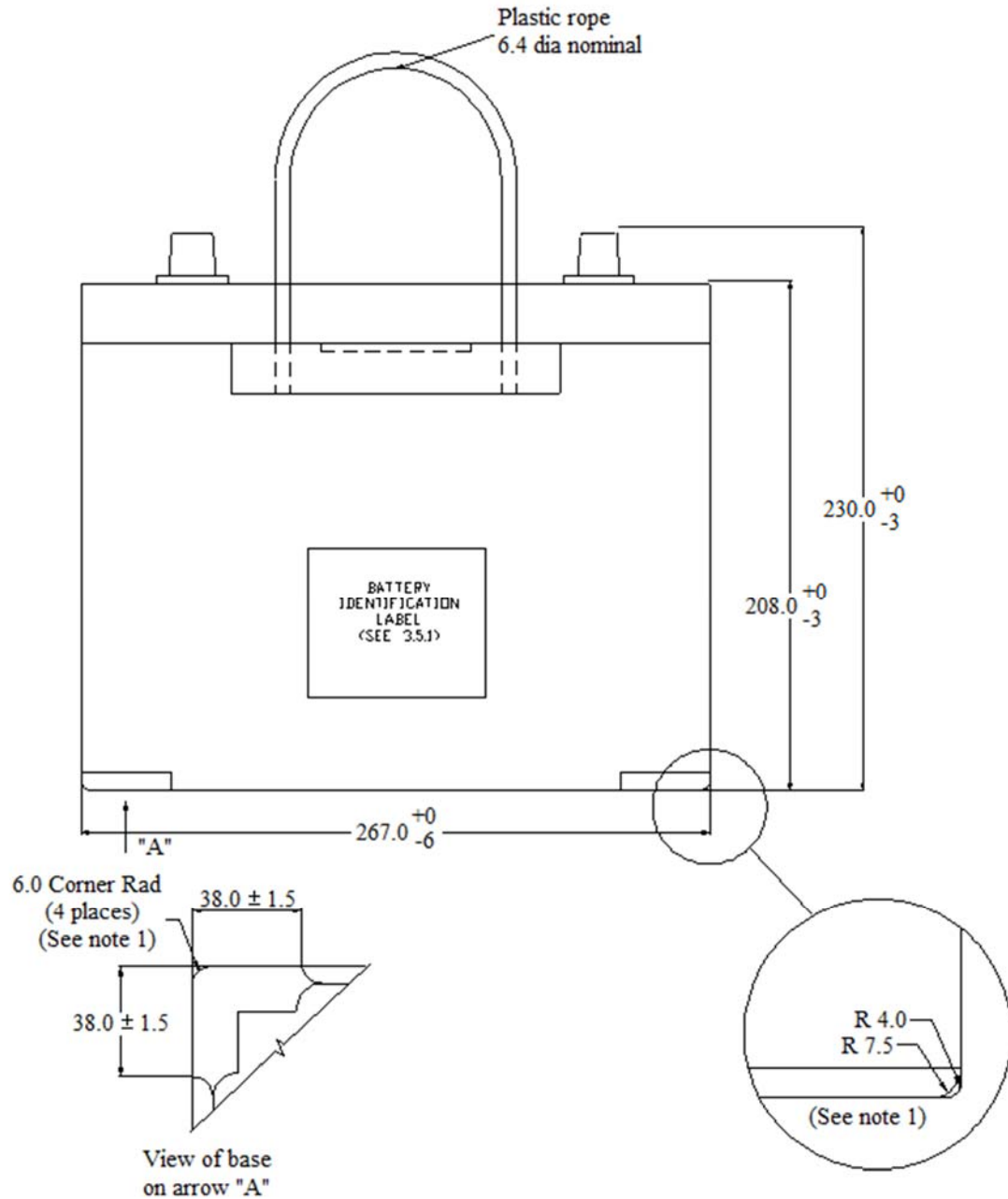


NOTES:

1. Ribbing and detailing on sides of batteries optional.
2. Chamfer or continuous radius providing equivalent clearance is permitted.

FIGURE 4. Front view dimensions of battery.

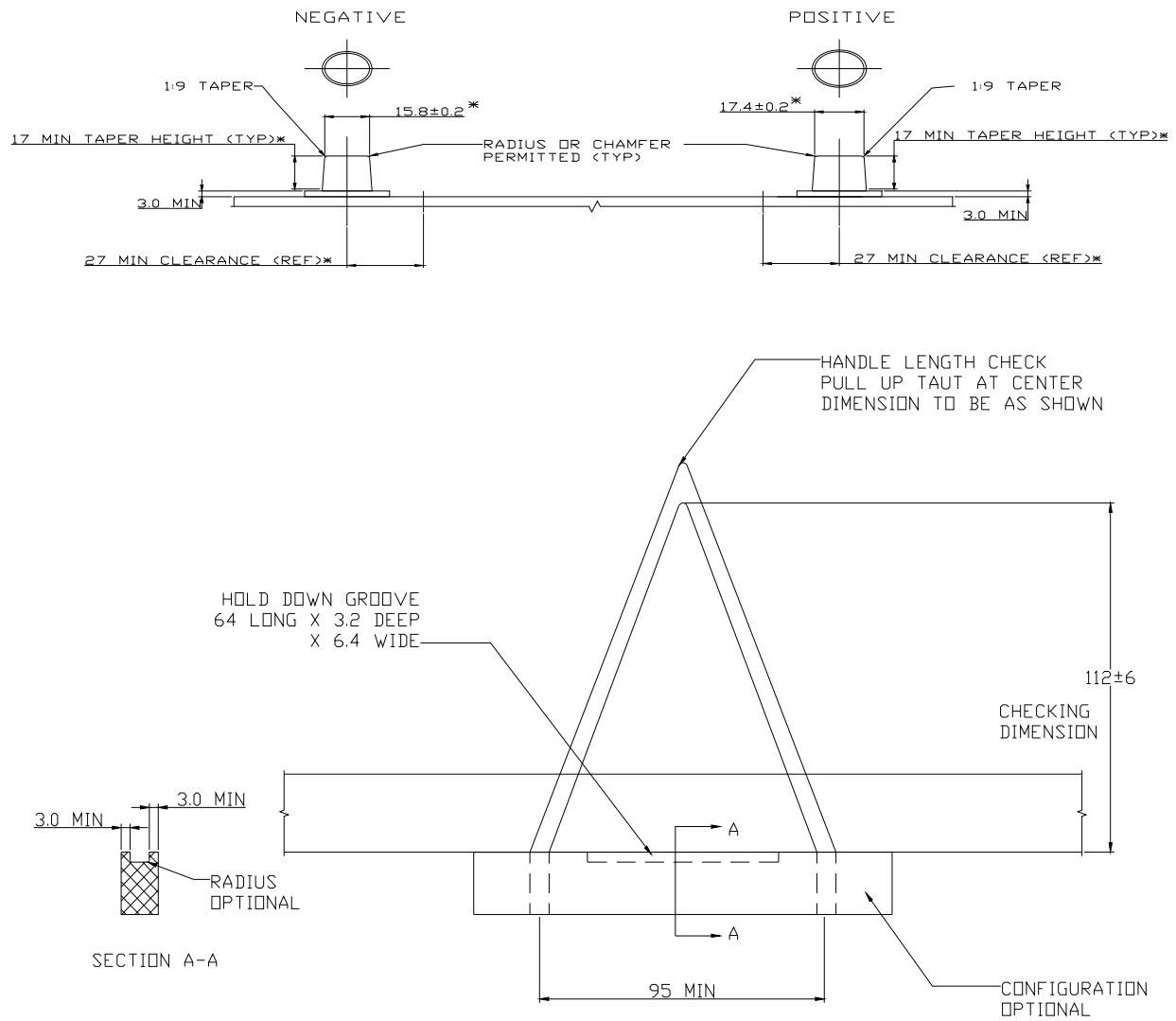
MIL-PRF-32143C



NOTE:

1. Chamfer or continuous radius providing equivalent clearance is permitted.

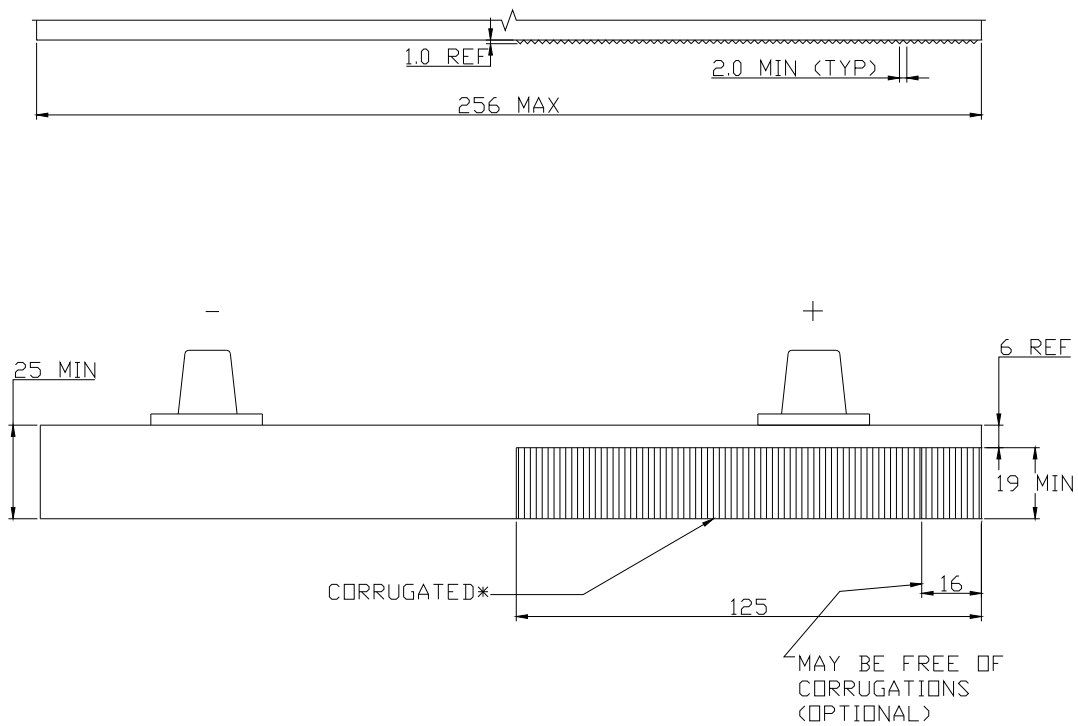
FIGURE 5. Side view dimensions of battery.



**NOTE:**

1. Method of rope attachment optional.

**FIGURE 6. Handle and post details.**



NOTE:

1. Battery and Physical Requirements

FIGURE 7. Corrugations by positive post.

MIL-PRF-32143C

**\*\*\*RECOVERABLE ITEM\*\*\***

INSTALL DATE (M/Y):

**ESTIMATED 3 YEAR MINIMUM SERVICE LIFE**

**DO NOT DISPOSE WITHOUT CHARGING AND  
RETESTING IAW TB 9-6140-252-13**

**USE OF APPROVED TESTING AND CHARGING  
EQUIPMENT IS REQUIRED**

CHECK IF RETEST FAILS ☐

NOTES:

1. Placement of mandatory statements and boxes, within label, is flexible.
2. Label dimensions and font size may be manipulated, provided the font remains legible.

FIGURE 8. Maintenance advisory tag.

Custodian:

Army – AT  
Navy – MC  
DLA – CC

Preparing Activity:

Army – AT

(Project 6140-2016-001)

NOTE: The activities listed above were interested in this document as of the date of this document. Since organizations and responsibilities can change, you should verify the currency of the information above using the ASSIST Online database at <https://assist.dla.mil>.