

11-37
8.35
p. 29

NASA Technical Memorandum 106943

Preloaded Joint Analysis Methodology for Space Flight Systems

Jeffrey A. Chambers
Lewis Research Center
Cleveland, Ohio

(NASA-TM-106943) PRELOADED JOINT
ANALYSIS METHODOLOGY FOR SPACE
FLIGHT SYSTEMS (NASA, Lewis
Research Center) 29 p

N96-18420

Unclass

G3/37 0099807

December 1995



National Aeronautics and
Space Administration

PRELOADED JOINT ANALYSIS METHODOLOGY FOR SPACE FLIGHT SYSTEMS

Jeffrey A. Chambers
National Aeronautics and Space Administration
Lewis Research Center
Cleveland, Ohio 44135

SUMMARY

This report is a compilation of some of the most basic equations governing simple preloaded joint systems and discusses the more common modes of failure associated with such hardware. It is intended to provide the mechanical designer with the tools necessary for designing a basic bolted joint. Although the information presented is intended to aid in the engineering of space flight structures, the fundamentals are equally applicable to other forms of mechanical design.

INTRODUCTION

Bolted joints are used in countless mechanical designs as the primary means of fastening. However common though, the behavior of bolted joints is quite complicated. For the typical bolted joint, various factors affect everything from the initial torquing and preloading to the final forces carried in the bolt. The parameters that must be considered to characterize joint behavior literally number in the hundreds making the proper selection, combination, and use of the variables quite confusing, especially to the occasional user. When it is also considered that the failure of a bolted joint will usually adversely affect the function or safety of the system, these factors take on even more importance. Given their role in the system's performance, the accurate characterization of bolted joints is of great interest. This is especially true when dealing with critical systems such as those encountered with space flight systems.

NOMENCLATURE

A	nominal fastener cross-sectional area, in. ²
A _{br}	bearing area, in. ²
A _s	fastener shear cross-sectional area, in. ²
A _t	fastener tensile cross-sectional area, in. ²
D	nominal fastener diameter (shank), in.
D _{major,ext}	major pitch diameter, external threads, in.
D _{minor,min}	minor pitch diameter, internal threads, in.
D _p	mean thread diameter, in.
d _h	countersunk head diameter or head bearing diameter, in.
d _t	through-hole diameter, in.
d _w	effective countersunk head diameter, in.
E _b	bolt modulus of elasticity, psi
E _j	joint modulus of elasticity, psi
e	edge distance or eccentricity, in.
F _{br}	material bearing (yield or ultimate) strength, psi
F _{su}	material ultimate shear strength, psi

F_{sy}	material yield shear strength, psi
F_{tu}	material ultimate tensile strength, psi
F_{ty}	material tensile yield strength, psi
K	typical nut factor
K_b	bolt stiffness, lb/in.
K_j	joint stiffness, lb/in.
L	fastener grip length, in.
L_e	thread engagement length or nut thickness, in.
L_i	insert thread engagement length, in.
LP_i	ith loading plane
l_h	countersunk head depth, in.
l_i	abutment component thickness, in.
M	applied bending moment, lb-in.
MS	margin of safety
n	loading plane factor
P_b	total axial bolt load, lb
ΔP_b	change in axial bolt load, lb
P_{br}	bearing load, lb
P_{et}	total externally applied axial load, lb
ΔP_j	change in joint load, lb
P_o	nominal bolt preload, lb
$P_{o,final}$	final joint preload, lb
$P_{o,initial}$	initial joint preload, lb
$P_{o,max}$	maximum expected bolt preload, lb
$P_{o,min}$	minimum expected bolt preload, lb
P_{relax}	axial bolt preload loss, lb
P_{sep}	joint separation load, lb
P_{th}	axial bolt load due to thermal effects, lb
P_{ult}	ultimate tensile load, lb
p	thread pitch, in.
R_b	bending load ratio
R_s	shear load ratio
R_t	tensile load ratio
SF	safety factor
SF_{sep}	safety factor for separation
T	applied torque, in.-lb
ΔT	change in temperature, °F
t	thickness, in.
u	preload uncertainty factor
V	applied shear load, lb

α	thread angle, radians
α_b	bolt coefficient of thermal expansion, in./in./°F
α_j	abutment coefficient of thermal expansion, in./in./°F
δ	bolt deflection due to external load, in.
δ_b	bolt deflection, in.
δ_j	abutment deflection, in.
μ	coefficient of friction between threads
μ_c	coefficient of friction between bolt head (or nut) and abutment
ψ	thread helix angle, radians
ϕ	joint stiffness factor

THE PRELOADED JOINT

THE MECHANICS OF PRELOADING

A bolted joint is most commonly preloaded, or prestressed, through the initial torquing of the joining elements. When an external torque is applied to the system, the bolt is elongated and the abutments (flanges) are compressed. The elongation of the bolt results in an initial tensile load, P_o , in the bolt. Likewise, the compressed abutments deflect and carry a compressive load (P_o) in the region surrounding the bolt. For most typical joint designs, the bolt and flange do not deflect at the same rate under preloading as a result of their different stiffnesses. The abutments are often much stiffer than the bolt resulting in less deflection than in the bolt ($\delta_j < \delta_b$). The preloading mechanism can be described graphically as shown in fig. .

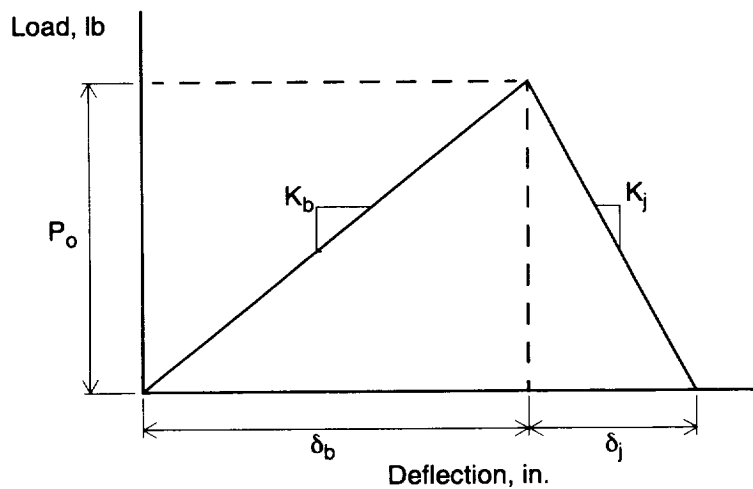


Figure 1.—Load-deflection curve.

DETERMINING BOLT PRELOAD

In general, a bolted joint performs best when it is preloaded such that the working loads are reacted primarily by the portion of the joint in compression. If designed properly, the bolt actually carries only a small portion (usually less than 20 percent) of that external loading while the greater portion of loading is offset by the release of the compressive energy introduced to the flanges during torquing. Essentially, a large portion of work is performed by the joint while

a small portion of work is performed on the bolt. The joint is initially placed in compression by applying a tensile preload to the bolt. An initial preload is introduced so that the compression in the flanges is never completely relieved and hence the flange faces never separate. In order to obtain this level of preload, the bolt is usually prestressed very near its working limits (usually 65 to 90 percent of its yield strength). This preload is most commonly obtained by torquing of the elements and can be determined by (ref. 1)

$$P_o = \frac{T}{KD} (1.0 \pm u) \quad (1)$$

The basic preload may vary from the intended value, either more or less, by an amount established by the preload uncertainty factor, u . Preload uncertainty is a function of many factors including torquing devices, lubrication, load measurement, etc. It accounts for parameters affecting the degree to which the applied torque actually results in joint preload. These parameters can be the sensitivity of the torque measuring device or inconsistencies in running friction from one bolt to another, among others. In general, it is safe to assume that the preload uncertainty for a hand-operated torque wrench used on a lubricated fastener is ± 25 percent (ref. 1). For comparison, if load sensing (instrumented) bolts are used, the preload uncertainty factor may be reduced to ± 5 percent.

The applied torque, T , and nominal diameter, D , are generally known and measurable parameters, but the nut factor, K , is not. The nut factor is essentially a factor applied to account for the effects of friction in the torquing elements (both in the threads and under the bolt head/nut). From Barret (ref. 2), the typical nut factor, or torque coefficient, can be approximated as a function of thread geometry and element coefficients of friction and may be expressed as

$$K = \frac{D_p}{2D} \left(\frac{\tan \psi + \mu \sec \alpha}{1 - \mu \tan \psi \sec \alpha} \right) + 0.625 \mu_c \quad (2)$$

Unfortunately, this method is quite complex since frictional coefficients between heavily loaded parts are not easily estimated with accuracy. A simpler approach is to assume that the nut factor usually ranges from 0.11 to 0.15 for lubricated fasteners. The lower end of this range provides the most conservative approach with respect to bolt loading since it produces the highest bolt preload. The upper end of the range provides the most conservative estimate for joint separation (to be discussed later) since it yields the lowest bolt preload. For unlubricated fasteners, a nut factor on the order of 0.2 may be used. When selecting a nut factor, the engineer may wish to examine both extremes of a reasonable range in order to assess the impacts on joint design.

As an alternative to the typical nut factor method of determining preload, the torque-preload relationships can be determined experimentally. Here, the torque-preload relationships are determined by direct measurements taken from instrumented joint specimens. Statistical data is recorded for the torque required to achieve a desired bolt force. Many relationships have been developed for various sizes, types, lubrications, and bolt materials commonly used in space flight hardware and are well documented in MSFC-STD-486B (ref. 3). For tensile loading applications, if the fastener is torqued in accordance with the guidelines, it may be assumed that the pretensioning develops 65 percent of the tensile yield strength of the bolt material¹.

$$\frac{T}{KD} = 0.65 F_{ty} A_t \quad (3)$$

¹Establishing an initial preload of 65 percent of yield is specific to some NASA space flight hardware. Other applications may require more or less initial preload depending on functional requirements. However, when a preload target level is established, additional stresses (e.g., torsional stresses) must be considered that may be additive to the axial preload stress.

The tensile area, A_t , is the minimum cross-sectional area of the bolt and is calculated from the following equation (ref. 1):

$$A_t = \frac{\pi}{4} (D - 0.9743p)^2 \quad (4)$$

For NAS and MS standard fasteners of A-286 material with a yield strength of 85 000 psi, lubricated and torqued in accordance with reference 3, equation (3) may be expressed as

$$\frac{T}{KD} = (0.65) (85000) A_t = (55250) A_t \quad (5)$$

Torquing and preload uncertainty, however, are not the only parameters affecting the initial joint preload. Temperature changes and preload relaxation can modify initial preload. Thermal loading on the joint may be experienced if the bolt and flange materials have different coefficients of thermal expansion and the joint is subjected to a temperature change. Under a given temperature change (measured from the assembly state) the bolt and abutments expand or contract at differing rates which introduces a tension or relaxation in the bolt (P_{th}). Small changes in global operating conditions or large local temperature gradients can result in significant changes in joint loading and therefore must be considered.

To maintain contact within the joint, the thermal deflection of the bolt must be balanced by the total deflection in the flanges. For purposes of developing the relation, assume a connection with flanges made of aluminum and a bolt made of steel ($\alpha_j > \alpha_b$) is subjected to a uniform temperature increase. The flanges attempt to expand more than the bolt will allow which increases the load in the bolt. Therefore the total elongation of the bolt is the result of two components: the unrestricted thermal elongation plus an elongation due to the increased load in the joint. The total deflection in the flanges is the difference between the unrestricted thermal expansion and the additional compression due to the increase in preload. The change in preload can be derived as shown below.

$$\delta_b = \frac{P_{th}}{K_b} + \alpha_b L \Delta T \quad (6)$$

$$\delta_j = -\frac{P_{th}}{K_j} + \alpha_j L \Delta T \quad (7)$$

Since the bolt and joint deflections are equal, $\delta_b = \delta_j$,

$$\frac{P_{th}}{K_b} + \alpha_b L \Delta T = -\frac{P_{th}}{K_j} + \alpha_j L \Delta T \quad (8)$$

$$P_{th} \left(\frac{K_b + K_j}{K_b K_j} \right) = L \Delta T (\alpha_j - \alpha_b) \quad (9)$$

Rearranging yields the following basic thermal loading relation:

$$P_{th} = \left(\frac{K_b K_j}{K_b + K_j} \right) L \Delta T (\alpha_j - \alpha_b) \quad (10)$$

Figure illustrates how a temperature change affects the initial joint load.

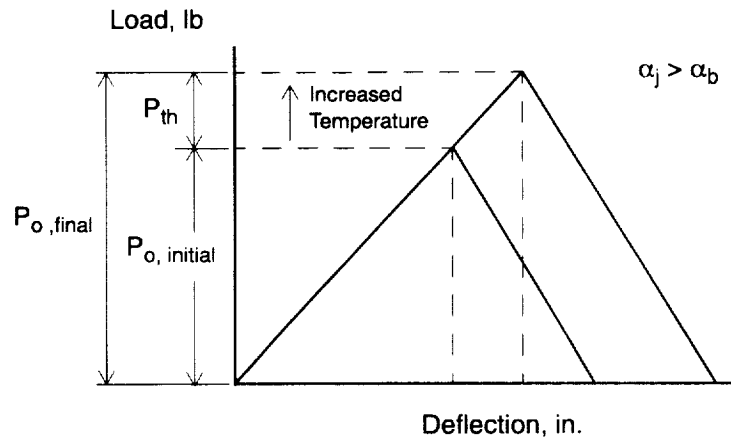


Figure 2.—Thermal loading effects.

Preload relaxation (or embedding) occurs as the contact surfaces of the flanges and joining elements experience local yielding as they conform to one another over a period of time. Surface defects and machine marks that form high points on the contact surfaces experience local yielding under the preload. This eventually works to seat the surfaces together and relieves some portion of the preload as shown in fig. . There may also be some localized yielding in the threads of the bolt and nut that results in additional relaxation. Preload relaxation can also be encountered if elastomeric joint materials (e.g., gaskets) are used and experience permanent set over time. Dynamic or cyclic loading can lead to settling in the joint through fretting of the contact surfaces. The amount of preload relaxation can be quite difficult to characterize since it must consider the materials, loading, and physical (e.g., corrosive) environment in which the joint exists. The amount of embedding for typical metal-to-metal joints in a noncorrosive environment is typically between 2 and 10 percent (ref. 4). For design and analysis purposes it is safe to assume the preload loss to be about 5 percent, that is,

$$P_{relax} = 0.05 P_{o, min} \quad (11)$$

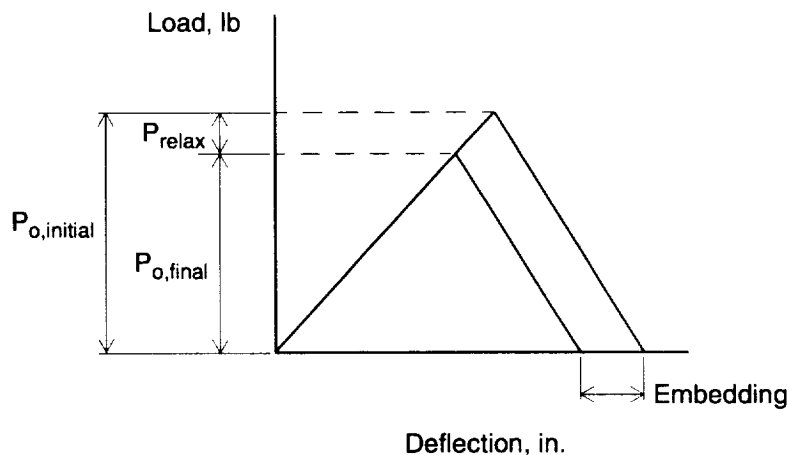


Figure 3.—Relaxation effects.

By including the effects of preload uncertainty, thermal effects, and preload relaxation, the maximum and minimum expected preloads in the joint may be described by (ref. 1)

$$P_{o, max} = \frac{T}{KD} (1.0 + u) + P_{th} \quad (12)$$

and

$$P_{o,min} = \frac{T}{KD} (1.0 - u) - P_{th} - P_{relax} \quad (13)$$

Combining all factors for a manually torqued, lubricated fastener with negligible thermal effects, enables equations (12) and (13) to be expressed as

$$P_{o,max} = \frac{T}{KD} (1.25) \quad (14)$$

and

$$P_{o,min} = \frac{T}{KD} (0.75) - 0.05 P_{o,min} \quad (15)$$

or

$$P_{o,min} = \frac{T}{KD} (0.714) \quad (16)$$

Equations (14) and (16) are used to determine the maximum and minimum expected preloads for various sizes of A-286 alloy and 300 Series CRES fasteners (see tables I and II).

**TABLE I.-MINIMUM AND MAXIMUM EXPECTED JOINT PRELOADS
FOR A-286 FASTENERS^a**

Diameter code	A _t , in. ²	T/KD, lb	P _{o,min} , lb	P _{o,max} , lb
#2 - 56 (0.086)	0.00370	204	146	256
#4 - 40 (0.112)	0.00604	334	239	417
#6 - 32 (0.138)	0.00909	502	359	628
#8 - 32 (0.164)	0.0140	774	553	967
#10 - 32 (0.190)	0.0200	1105	789	1381
1/4 - 28	0.0364	2011	1436	2514
5/16 - 24	0.0580	3205	2289	4006
3/8 - 24	0.0878	4851	3465	6064
7/16 - 20	0.1187	6558	4684	8198
1/2 - 20	0.1599	8835	6311	11043
9/16 - 18	0.203	11216	8011	14020
5/8 - 18	0.256	14144	10103	17680
3/4 - 16	0.373	20608	14720	25760

^aFor A-286 alloy fasteners with minimum properties: F_{tu} = 130 ksi, F_{ty} = 85 ksi, F_{su} = 85 ksi.

**TABLE II.-MINIMUM AND MAXIMUM EXPECTED JOINT PRELOADS
 FOR 300 SERIES CRES 300 FASTENERS^a**

Diameter code	T/KD, lb	P _{o,min} , lb	P _{o,max} , lb
#2 - 56 (0.086)	63	45	78
#4 - 40 (0.112)	102	73	128
#6 - 32 (0.138)	154	110	192
#8 - 32 (0.164)	237	169	296
#10 - 32 (0.190)	338	241	423
1/4 - 28	615	439	769
5/16 - 24	980	700	1225
3/8 - 24	1484	1060	1855
7/16 - 20	2006	1433	2508
1/2 - 20	2702	1930	3378
9/16 - 18	3431	2451	4288
5/8 - 18	4326	3090	5408
3/4 - 16	6304	4503	7880

^aFor 300 series CRES fasteners with minimum properties: F_{tu} = 73 ksi, F_{ty} = 26 ksi, F_{su} = 50 ksi.

FASTENER AXIAL LOAD

The total axial load in a fastener consists of the preload plus that portion of the external mechanical load not reacted by the joint. The total axial bolt load, P_b, can be given by (ref. 1)

$$P_b = P_{o,max} + (SF \times n\phi P_{et}) \quad (17)$$

where P_{et} is the resultant external force directed at the joint. This can be obtained through a free-body diagram of the system, finite element results, or other means. This external force must however include all components (e.g., prying action, moment resistance, etc.) that may increase or decrease the final force acting at the bolt. A factor of safety (SF) is applied to the external loading only (as opposed to P_b as a whole) since inaccuracies of the preloading process have already been accounted for in the development of P_o. The factors of safety for general space flight hardware are usually dependent on the method of verification used (ref. 5) and may differ from program to program. For nonpressurized, untested applications the safety factors are normally 1.25 and 2.0 for yield and ultimate strengths, respectively, while 1.1 and 1.4 are typical for nonpressurized, tested applications. Safety factors are strongly dependent on the specific application, method of loading, and overall design requirements, and therefore should be reviewed carefully before using them with the joint equations.

The terms n and ϕ represent the effectiveness of the joint in reducing the amount of external loading transferred to the bolt. Both parameters can be examined by considering the joint as a system of springs as shown in figure 4.

Under the initial preloading the bolt carries a tensile load while the flanges carry an equal compressive load. If an external tensile load, P_{et} , is introduced very near the contact surface between the two flanges ($n \approx 0$), then both flanges are further compressed through almost their entire depth. Only a very small portion of the flanges between the induction points is left to undergo relaxation of its compressive preload. In the spring diagram, springs a and d are very long in comparison to springs b and c. As the external load is applied, springs b and c are relieved (unloaded) of some of their compression while springs a and d are further compressed (loaded). The compressive deflection relieved in springs b and c is partly offset by the additional compressive deflection gained in springs a and d. Any additional elongation (and hence loading) in the bolt is equal to the difference in deflections between the unloaded and loaded sections of the flanges. This action with the flanges reacts a large portion of the external loading as shown in fig. (a). When the magnitude of P_{et} reaches that of the initial preload, P_o , all remaining compression in springs b and c has been relieved and the flange faces separate. Once the flanges have separated, the bolt is left to carry the entire external load.

If the external loading is applied at the free faces of the flanges ($n = 1.0$), the entire thickness of the flanges are relieved of their compression as loading is applied. All springs a, b, c, and d are relaxed. Since there is no flange material beyond the loading planes to undergo additional compression (such as in the previous case), the bolt elongates at the same rate that the flanges are relieved. In this situation the joint follows the load-deflection curve as shown in fig. (b). Again, separation of the flanges is not encountered until all compression in the flanges has been relieved. For equal loading applied in both cases, the latter case ($n = 1.0$) results in greater bolt being transferred to the bolt.

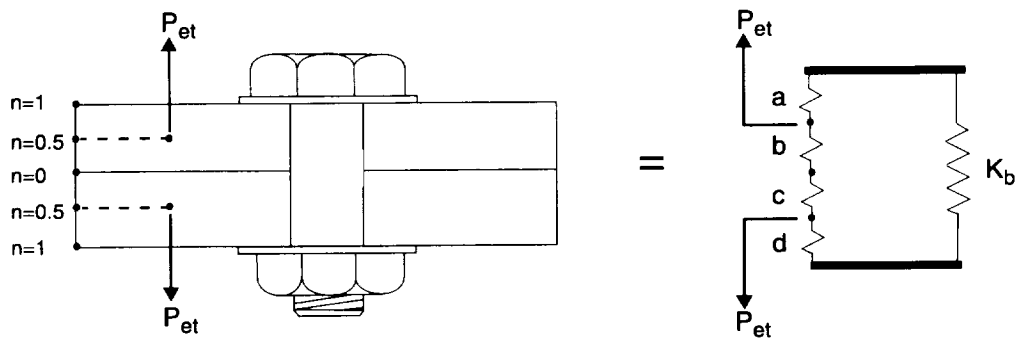


Figure 4.—Joint and spring analogy.

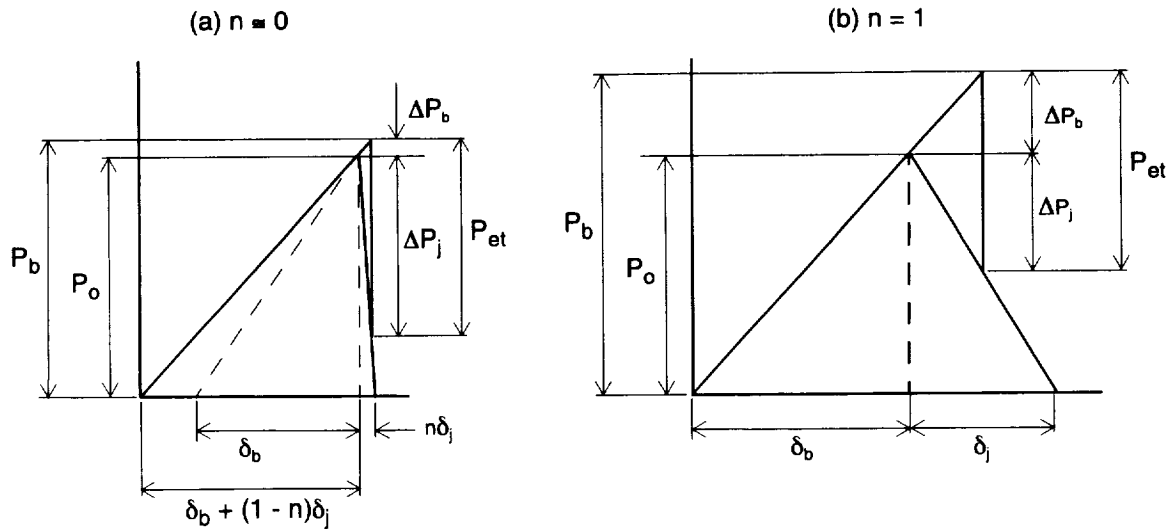


Figure 5.—Effects of loading plane.

In most practical joint applications the behavior of the joint is at some point between these two extremes. For common joint designs the load is carried somewhere near the midplanes of the flanges as shown in fig. . With loading introduced near these midplanes ($n = 0.5$), the flange regions inboard and outboard of the loading planes work together much like the case of $n = 0$ but to a lesser degree. The loading plane factor is described by reference 1 as

$$n = \frac{\text{distance between loading planes}}{\text{total thickness of joint}} \quad (18)$$

For most joints, it is usually acceptable to assume the loading planes to be located at the midplanes of the flanges or the midplanes outermost members if more than two components are being bolted. The joint configuration should always be examined closely to insure that this assumption is applicable.

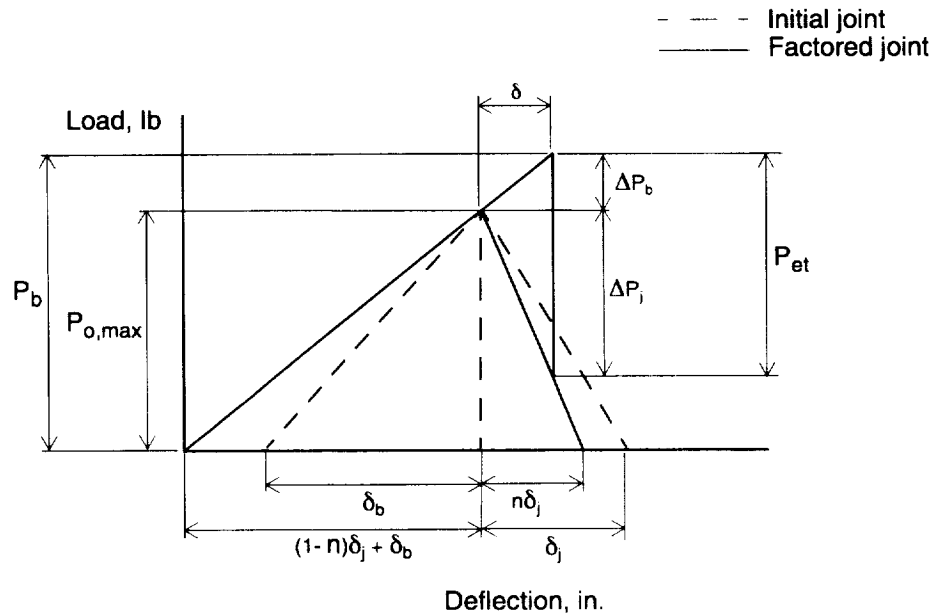


Figure 6.—Tension loaded joint.

The stiffness factor, ϕ , determines the proportion in which the load is shared between bolt and joint. Since the extensional deflection, δ , of the bolt under an arbitrary tensile loading, P_{et} , is equal to the amount of net deflection in the flanges, the force in each component can be determined with the aid of the load-deflection diagram (fig. 6).

$$P_{et} = \Delta P_b + \Delta P_j \quad (19)$$

$$\Delta P_b = \left[\frac{P_o}{\delta_b + (1-n)\delta_j} \right] \delta \quad (20)$$

$$\Delta P_j = \left(\frac{P_o}{n\delta_j} \right) \delta \quad (21)$$

Rearranging equation (20) and using the result to rewrite equation (19) in terms of ΔP_b give

$$\delta = \Delta P_b \left[\frac{\delta_b + (1-n)\delta_j}{P_o} \right] \quad (22)$$

$$\Delta P_j = \left(\frac{P_o}{n\delta_j} \right) \Delta P_b \left[\frac{\delta_b + (1-n)\delta_j}{P_o} \right] = \Delta P_b \left[\frac{\delta_b + (1-n)\delta_j}{n\delta_j} \right] \quad (23)$$

$$P_{et} = \Delta P_b + \Delta P_b \left[\frac{\delta_b + (1-n)\delta_j}{n\delta_j} \right] = \Delta P_b \left[\frac{n\delta_j + (\delta_b + (1-n)\delta_j)}{n\delta_j} \right] \quad (24)$$

$$P_{et} = \Delta P_b \left(\frac{\delta_b + \delta_j}{n\delta_j} \right) \quad (25)$$

$$\delta_b = \frac{P_o}{K_b} \quad (26)$$

$$\delta_j = \frac{P_o}{K_j} = \delta_b \left(\frac{K_j}{K_b} \right) \quad (27)$$

$$P_{et} = \Delta P_b \left(\frac{K_b + K_j}{nK_b} \right) \quad (28)$$

So the stiffness factor (or load factor) is defined as

$$\phi = \frac{K_b}{K_b + K_j} \quad (29)$$

Then equation (28) can be written as

$$\Delta P_b = n\phi P_{et} \quad (30)$$

The bolt stiffness, K_b , is equal to the axial stiffness of a circular rod with a cross section based on the nominal bolt diameter. The joint stiffness, K_j , is taken as the stiffness of the flange region which experiences the compressive preload. It can be very difficult to determine the exact region of the flange which is placed in compression and equally difficult to determine its stiffness. Several methods exist that estimate (either mathematically or experimentally) the stiffness of this load affected region; however, the method outlined by Shigley (ref. 6) has been used in this report. This method assumes that compressive loading in the flange(s) is distributed through 45° conical sections like those shown in fig. . Relations for the various joint parameters are given for several typical joint configurations shown in figures 7 to 10.

Configuration 1

Multiple parts are bolted together with a through-bolt and washer/nut combination. The bolt may be hex, socket, or pan head style (see fig. 7).

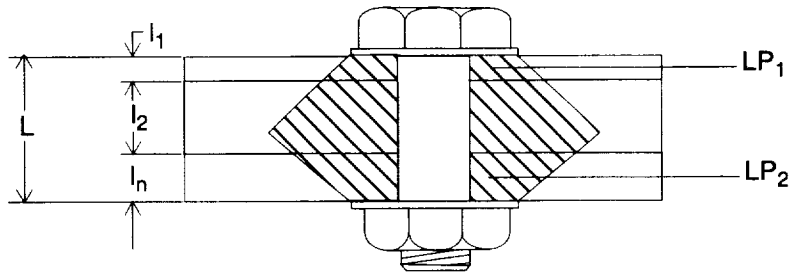


Figure 7.—Joint configuration 1.

For configuration 1, the following equations apply:

$$L = l_1 + l_2 + \dots + l_n \quad (31)$$

$$K_b = \frac{AE_b}{L} \quad (32)$$

$$K_j = \frac{\pi E_j D}{2 \ln \left[5 \left(\frac{L + 0.5D}{L + 2.5D} \right) \right]} \quad (33)$$

$$1212 E_j = \left[\frac{L}{\left(\frac{l_1}{E_1} \right) + \left(\frac{l_2}{E_2} \right) + \dots + \left(\frac{l_n}{E_n} \right)} \right] \quad (34)$$

$$n = \frac{\frac{l_1}{2} + l_2 + \dots + \frac{l_n}{2}}{l_1 + l_2 + \dots + l_n} \quad (35)$$

Configuration 2

Parts are bolted together with a flat-head through-bolt and washer/nut combination (see fig. 8).

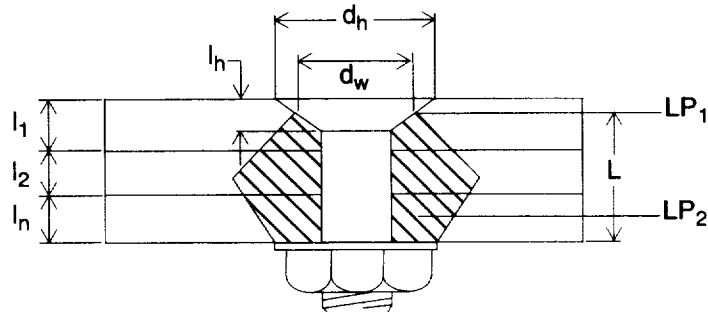


Figure 8.—Joint configuration 2.

For configuration 2, the following equations apply:

$$L = l_1 + l_2 + \dots \left(l_n - \frac{l_h}{2} \right) \quad (36)$$

$$K_b = \frac{AE_b}{L} \quad (37)$$

$$K_j = \frac{\pi E_j D}{\ln \left[\frac{(L + d_w - D)(d_w + D)(L + 0.5D)}{(L + d_w + D)(d_w - D)(L + 2.5D)} \right]} \quad (38)$$

$$d_w = \frac{d_h + D}{2} \quad (39)$$

Note that, if $d_w \approx 1.5D$, which is the case for typical aerospace fasteners, then equation (38) reduces to equation (33).

$$E_j = \frac{L}{\left(\frac{l_1 - \frac{l_h}{2}}{E_1} \right) + \frac{l_2}{E_2} + \dots + \frac{l_n}{E_n}} \quad (40)$$

$$n = \frac{\left(l_1 - \frac{l_h}{2} \right) + l_2 + \dots + \frac{l_n}{2}}{l_1 + l_2 + \dots + l_n} \quad (41)$$

Configuration 3

Parts are bolted together with a bolt threaded into the last part (with or without insert). The bolt may be hex, socket, or pan head style (see fig. 9).

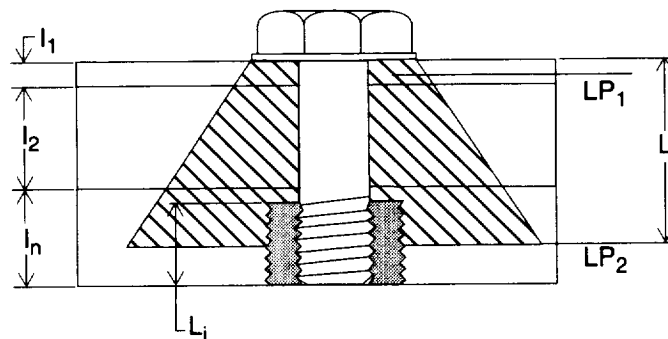


Figure 9.—Joint configuration 3.

For configuration 3, the following equations apply:

$$L = l_1 + l_2 + \dots + \left(l_n - \frac{L_i}{2}\right) \quad (42)$$

$$K_b = \frac{AE_b}{L} \quad (43)$$

$$K_j = \frac{\pi E_j D}{\ln \left[5 \left(\frac{2.0L + 0.5D}{2.0L + 2.5D} \right) \right]} \quad (44)$$

$$E_j = \frac{L}{\frac{l_1}{E_1} + \frac{l_2}{E_2} + \dots + \left(\frac{l_n - \frac{L_i}{2}}{E_n} \right)} \quad (45)$$

$$n = \frac{\frac{l_1}{2} + l_2 + \dots + \left(l_n - \frac{L_i}{2}\right)}{l_1 + l_2 + \dots + l_n} \quad (46)$$

Configuration 4

Parts are bolted together using a flat-head bolt threaded into the last assembled part (see fig. 10):

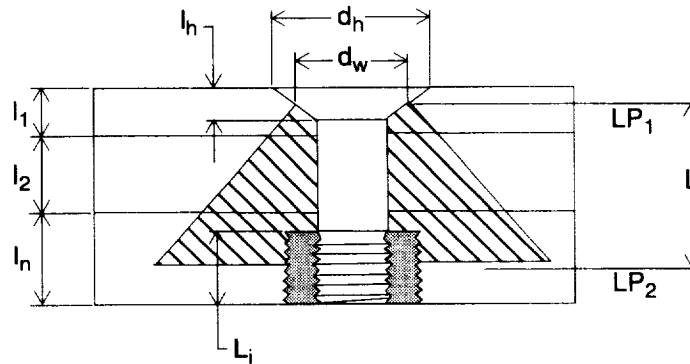


Figure 10.—Joint configuration 4.

For configuration 4, the following equations apply:

$$L = \left(l_1 - \frac{l_h}{2}\right) + l_2 + \dots + \left(l_n - \frac{L_i}{2}\right) \quad (47)$$

$$K_b = \frac{AE_b}{L} \quad (48)$$

$$K_j = \frac{\pi E_j D}{\ln \left[\frac{(L + d_w - D)(d_w + D)}{(L + d_w + D)(d_w - D)} \right]} \quad (49)$$

$$d_w = \frac{d_h + D}{2} \quad (50)$$

Note again that, if $d_w \approx 1.5D$, then equation (49) reduces to equation (44).

$$E_j = \frac{L}{\left(\frac{l_1 - \frac{l_h}{2}}{E_1} \right) + \frac{l_2}{E_2} + \dots + \left(\frac{l_n - \frac{L_i}{2}}{E_n} \right)} \quad (51)$$

$$n = \frac{\left(l_1 - \frac{l_h}{2} \right) + l_2 + \dots + \left(l_n - \frac{L_i}{2} \right)}{l_1 + l_2 + \dots + l_n} \quad (52)$$

FASTENER STRENGTH CRITERIA

In general, for preloaded joints to work effectively they must meet (at a minimum) the following criteria (ref. 1):

- 1) Bolt(s) and joint must have adequate strength.
- 2) Joint must not experience separation under loading.
- 3) Bolt(s) must have adequate fracture and fatigue life.

Only the first two requirements will be discussed in this report. The third requirement addresses joints subject to dynamic or cyclic loading and is a matter that needs to be addressed separately. In most applications the bolted connections in space flight hardware are considered to be statically loaded. The dynamic load components present during the launch, orbit, and landing phases are usually short in duration and therefore replaced by equivalent static loads that would be developed by the dynamic events (ref. 5).

The first requirement is explicitly defined by the payload safety verification requirements associated with space flight hardware which mandates that all safety and fracture critical fasteners possess positive (> 0.0) margins of safety for all modes of failure. These margins of safety (MS) for bolts under various states of loading can be expressed (but are not limited to) as follows:

TENSION ONLY CRITERIA

For bolts subjected to pure tensile loading, the following is applicable:

$$MS = \frac{TensileAllowable}{P_b} - 1.0 \quad (53)$$

In general, for most modes of failure a margin of safety can be calculated for both ultimate and yield strengths. Both of these margins should be checked to determine which is limiting (critical) since a positive margin may exist for one while a negative margin exists for the other.

SHEAR ONLY CRITERIA²

For bolts subjected to pure shear loading, the following is applicable:

$$MS = \frac{ShearAllowable}{SF \times V} - 1.0 \quad (54)$$

The externally applied shear load, V , is again found by resolving all external shear loads into a resultant load acting at the individual fastener. The shear load usually has components determined from translational forces as well as components resulting from resisting moments in the joint. The allowable shear load can be given by

$$ShearAllowable = F_{su} A_s \quad (55)$$

A similar relation exists for the allowable yield load in shear.

The shear area, A_s , is normally equal to the minimum tensile area, for example, $A_s = A_t$, unless the joint is designed such that the shear plane acts on the unthreaded shank of the fastener. If the shear plane acts solely through the unthreaded portion of the bolt, the shear area may be based on the nominal diameter.

The bolt material ultimate shear strength, F_{su} , can usually be found for most ductile materials in references such as MIL-HDBK-5F or ASTM material specifications. The shear yield strength, F_{sy} , may be assumed to be $0.577F_{ty}$.

COMBINED TENSION AND SHEAR

For bolts subjected to the combination of simultaneous tension and shear, the following interaction equation must be satisfied (ref. 7):

$$R_t^2 + R_s^3 \leq 1.0 \quad (56)$$

where the axial and shear load ratios are

$$R_t = \frac{P_b}{BendingAllowable} \quad (57)$$

$$R_s = \frac{SF \times V}{ShearAllowable} \quad (58)$$

If equation (56) is viewed graphically, a curve is defined in the R_t - R_s space such as that shown in figure 11. Any combination of R_t and R_s beneath this curve satisfies the criteria and the bolt possesses some margin against failure. The margin of safety is represented by the shortest distance from the R_t - R_s point to the curve established by equation (56). This distance can be quite difficult to determine however, so an alternate method for estimating a relative numerical margin of safety given by equation (59) may be used.

$$MS = \frac{1}{\sqrt{R_t^2 + R_s^3}} - 1.0 \quad (59)$$

² The equations presented here are for joint systems where the applied shear loads are minimal in comparison to the axially applied loads (preload included). Joints designed principally for shear require special considerations, and hence the reader is cautioned to use extreme care when designing such a joint.

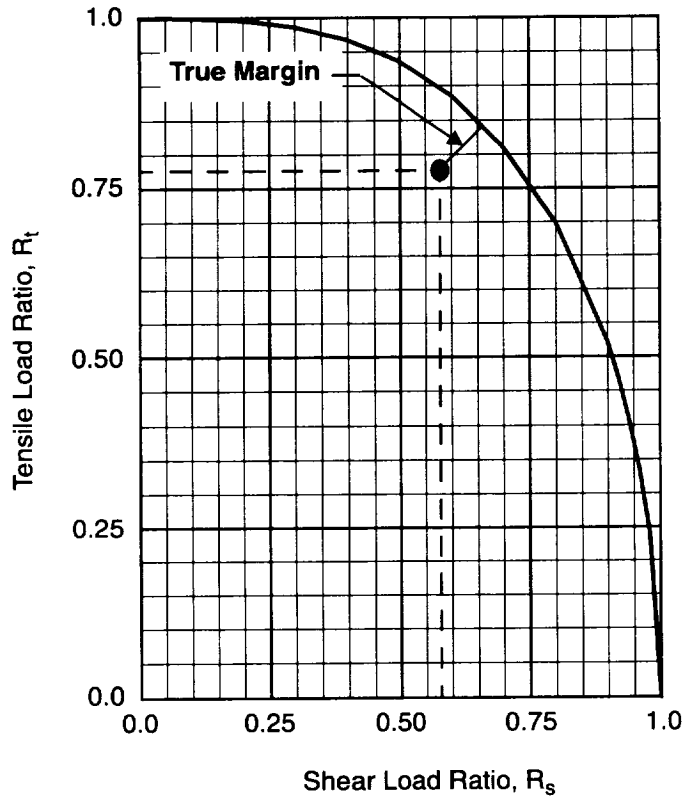


Figure 11.—Combined shear-tension relation.

COMBINED TENSION, SHEAR, AND BENDING

Although it is good design practice to avoid putting bolts into direct bending, occasions do arise where bending is experienced. Bolt bending may result from double shear, misalignment during assembly, use of long spacers, or from flanges that are several orders of magnitude stiffer than the bolt. In the latter case the flange tends to rotate as a rigid body, forcing the head of the bolt to rotate which applies moment loading to the bolt. For bolts subjected to the combination of tension, shear, and bending loads acting simultaneously, the following relation must hold (ref. 1):

$$(R_t + R_b)^2 + R_s^3 \leq 1.0 \quad (60)$$

where the ratio for the bending allowable is given by equation (61).

$$R_b = \frac{SF \times M}{\text{Bending Allowable}} \quad (61)$$

The bending allowable is usually based on the modulus of rupture (ref. 7) of the bolt material. The margin of safety relation³ is

$$MS = \frac{1}{\sqrt{(R_t + R_b)^2 + R_s^3}} - 1.0 \quad (62)$$

³The reader is cautioned that equations (59) and (62) can be unconservative in certain situations. The proper interaction equations should always be checked for critical applications.

Margins of safety should be calculated for both yield and tensile strengths to determine the limiting case.

BOLT THREAD SHEAR

The thread shear area of the bolt is the cylindrical area formed by the minor diameter of the mating *internal* threads and the length of thread engagement (ref. 8). This shear area can be estimated from the following relation:

$$A_s = \frac{5\pi L_e D_{\text{minor, int}}}{8} \quad (63)$$

where L_e is the engaged length of bolt thread. Usually, only the ultimate thread strength under axial loading is checked with the ultimate load being given as

$$P_{ult} = F_{su} A_s \quad (64)$$

The margin of safety is

$$MS = \frac{P_{ult}}{P_b} - 1.0 \quad (65)$$

JOINT SEPARATION CRITERIA

Separation of a joint occurs when the external tensile load relieves all of the initial compressive preload applied to the joint. Once the joint separates, the flanges cannot contribute to the load carrying capability of the connection, and the bolt is left to carry *all* of the external loading. In addition to increasing the total bolt load, this condition also severely hampers the fatigue resistance of the joint under cyclic loading. In fluid or pressure applications joint separation may also lead to leaking. For these reasons and others, separation is an unwanted condition for the joint. Therefore the design criteria states that separation of a preloaded joint must not occur. Figure illustrates this separation condition in terms of the load-deflection diagram.

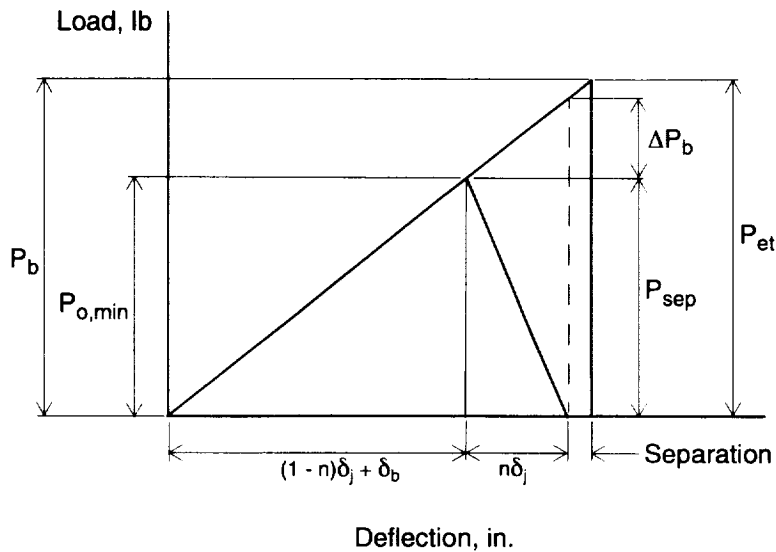


Figure 12.—Joint separation effect.

At any load P_{et} resulting in $P_{sep} < P_{o,min}$, the system possesses compressive energy and behaves as discussed earlier. When the portion of loading carried by the joint equals the preload (represented by the dashed line), $\Delta P_j = P_{sep} = P_{o,min}$, the compressive force held in the joint is totally exhausted and the joint begins to separate. Loading the joint beyond the separation point results in all of the loading being transferred through the bolt.

Referring back to equation (30) reveals that the portion of loading carried by the bolt at this point of separation is

$$\Delta P_b = n\phi P_{et} \quad (66)$$

Therefore the separation load is defined by

$$P_{sep} = \Delta P_j = (1 - n\phi) P_{et} \quad (67)$$

The margin of safety for joint separation can then be given as

$$MS = \frac{P_{o,min}}{SF_{sep} \times P_{sep}} - 1.0 \quad (68)$$

The recommended factor of safety for joint separation, SF_{sep} , is equal to 1.2 for structural applications and 1.4 for pressure system applications.

OTHER MODES OF FAILURE

Depending on the joint application, there are other modes of failure that may need to be addressed. These may include shear tear out of the lug material, bearing of the bolt against the lug, and bearing of the bolt head and/or nut against the lug.

SHEAR TEAR OUT

Shear tear out is possible when the bolt is positioned near the free edge of one or more of the abutment components and is loaded in shear. The bolt fails the abutment by shearing (or tearing) the material between the hole and the free edge of the abutment. This type of failure is common with lug type fittings and thin sheet abutments. The ultimate shear out load is

$$P_{ult} = F_{su} A_s \quad (69)$$

The available shear area (ref. 7) is

$$A_s = 2t \left(e - \frac{D}{2} \right) \quad (70)$$

where t is the thickness of the sheet or lug, e is the perpendicular distance from the hole centerline to the free edge of the sheet, and D is the nominal fastener diameter (as shown in fig. 13). A factor of two is used in the calculation of the shear area since the tear out occurs along two planes; one on each side of the bolt. This area is quite conservative since it considers the shear planes acting along the shortest distance between the edge of the hole and edge of the sheet (across section a-a). More realistically, this shearing action would occur at planes (sections b-b) located at some angle relative to the centerline (ref. 7).

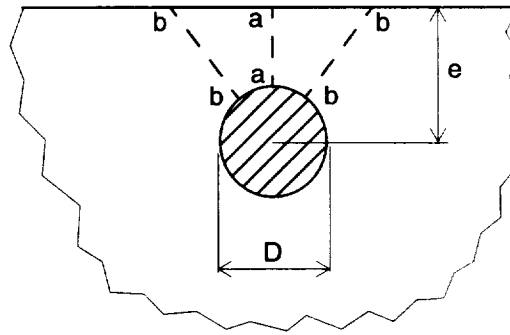


Figure 13.—Shear tear out of sheet edge.

The associated margin of safety is then

$$MS = \frac{P_{ult}}{SF \times V} - 1.0 \quad (71)$$

The possibility of encountering shear tearout can be greatly reduced if design practices are employed which maintain minimum e/D ratios of 2.0 or more. Occasionally the hardware design does not permit maintaining the 2.0 factor and the ratio must be reduced. In this situation, the e/D ratio may be reduced to as low as 1.5, however, it is never advisable to permit edge conditions resulting in an e/D ratio of less than 1.5 (ref. 9). As the ratio falls below 1.5, shear tearout failure becomes less prominent as the dominating stresses are tensile in nature. The failure mode then becomes a tensile (hoop stress) failure across the minimum section between the bolt and edge of the abutment.

BOLT BEARING

If the bolt is loaded in shear, bearing failure may occur as the bolt is pressed against the side of the through-hole or bushing. This loads the surrounding material with high bearing stresses that can locally fail the sheet or lug material. The limiting bearing load is given as

$$P_{br} = F_{br} A_{br} \quad (72)$$

where the bearing area, A_{br} , is

$$A_{br} = Dt \quad (73)$$

and

$$MS = \frac{P_{br}}{SF \times V} - 1.0 \quad (74)$$

These equations should be checked for both yield and ultimate conditions.

A more rigorous method of determining both the shear tear out and bearing failures is developed in Bruhn (ref. 7) and NASA TM X-73305 (ref. 10). This is the recommended method if the preceding equations indicate marginal results (e.g., $MS < 0.5$) or if the e/D ratio is below 1.5.

BEARING UNDER THE BOLT HEAD

Bearing under the head of the bolt (or nut) may need to be examined in situations of high preload, large external loads, or soft abutment materials. The limiting bearing load is the same as that of equation (72) except the bearing area is replaced by the effective projected area over which the load acts. This bearing area is given by

$$A_{br} = \frac{\pi (d_h^2 - d_t^2)}{4} \quad (75)$$

where d_h is the minimum contact diameter of the bolt head (or washer) and d_t is the maximum diameter of the lug through-hole. The margins of safety are again calculated for both yield and ultimate using equation (74).

THREADED INSERT ANALYSIS

For joints using threaded inserts, such as the joint shown in fig. , three basic modes of failures may be encountered. The first mode of failure, shear failure of the insert's internal threads, is exhibited as the fastener pulls out of the insert, failing the internal threads of the insert. The second failure mode, shear failure of the insert's external threads, is exhibited as the insert pulls from the parent material, failing the external threads of the insert. The third mode of failure, shear failure of the parent material's internal threads, results as the fastener and insert together pull from the parent material, failing the internal threads of the parent material. Each failure mode may be investigated using the methods described in the following sections.

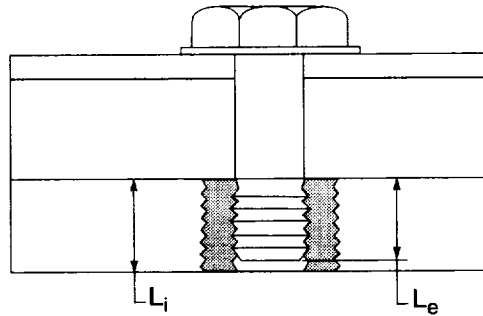


Figure 14.— Typical threaded insert application.

INSERT INTERNAL THREAD FAILURE

The ultimate strength of the insert in the internal thread shear failure mode is dependent on the amount of shear area available to resist axial loading of the bolt. This thread shear area is a function of the thread size and type as well as the length of thread engagement. In much the same manner as the external thread shear strength of the bolt, the insert internal thread shear strength is based on the major diameter of the mating *external* threads. This thread shear area can be estimated by (ref. 8).

$$A_s = \frac{3\pi L_e D_{\text{major, ext}}}{4} \quad (76)$$

The insert ultimate allowable pull-out strength is then

$$P_{ult} = F_{su} A_s \quad (77)$$

The allowable pull-out strengths for several standard sizes of inserts are summarized in table III.

TABLE III.-THREADED INSERT INTERNAL THREAD STRENGTH

Threaded insert				P_{ult} , lb	
Specification	Size code ^a	Internal thread	L_i , in.	A-286 Alloy	300 Series CRES
MS51830E	101L	#2 - 56	0.105	2110	1241
	102L	#4 - 40	0.155	4056	2386
	103L	#6 - 32	0.155	4988	2940
	104L	#8 - 32	0.205	7856	4621
	201L	#10 - 32	0.297	13185	7756
	202L	1/4 - 28	0.360	21029	12370
	203L	5/16 - 24	0.422	30813	18126
	204L	3/8 - 24	0.485	42496	24998
	205L	7/16 - 20	0.547	55917	32892
	206L	1/2 - 20	0.610	71265	41921
MS51831F	207L	9/16 - 18	0.797	104751	61618
	208L	5/8 - 18	0.860	125590	73877
	209L	3/4 - 16	1.235	216424	127308

^aInternal locking thread, externally key locked. Other sizes, lengths, and thread pitches are available, including Extra Heavy Duty (MS51832C) inserts. The allowables for these inserts may be calculated in the same manner.

INSERT EXTERNAL THREAD FAILURE

The shear area of the insert's externally threaded region is calculated in the same manner as that for the external thread shear area of the bolts given by equation (63) with the exception that the area must be reduced by the amount of area lost for the insert locking keys (if applicable). With external thread shear area, the insert pull-out strength is

$$P_{ult} = F_{su} A_s \quad (78)$$

Allowable external thread strengths for some standard size inserts are given in table IV.

TABLE IV.-THREADED INSERT EXTERNAL STRENGTH

Threaded insert				P_{ult} , lb	
Specification	Size code ^a	Internal thread	A_s^b , in. ²	A-286 Alloy	300 Series CRES
MS51830E	101L	#2 - 56	0.0157	1335	785
	102L	#4 - 40	0.0302	2567	1510
	103L	#6 - 32	0.0329	2797	1645
	104L	#8 - 32	0.0669	5687	3345
	201L	#10 - 32	0.0945	8033	4725
	202L	1/4 - 28	0.1726	14671	8630
	203L	5/16 - 24	0.2321	19729	11605
	204L	3/8 - 24	0.3366	28611	16830
	205L	7/16 - 20	0.4606	39151	23030
	206L	1/2 - 20	0.5831	49564	29155
MS51831F	207L	9/16 - 18	1.0247	87100	51235
	208L	5/8 - 18	1.2415	105528	62075
	209L	3/4 - 16	2.4478	208063	122390

^aInternal locking thread, externally key locked. Other sizes, lengths, and thread pitches are available, including Extra Heavy Duty (MS51832C) inserts. The allowables for these inserts may be calculated in the same manner.

^bMinimum shear engagement areas taken from MIL-I-45914A, "Insert, Screw Thread - Locked In, Key Locked, General Specification For", April 1991.

INSERT PARENT MATERIAL THREAD FAILURE

Although the actual thread shear area of the parent material is increased slightly over that of the insert's external thread shear area, for conservative purposes the shear area of the parent material internal thread is assumed to be the same as the insert's reduced external thread shear area used for equation (78). The parent material pull-out strength is then

$$P_{ult} = F_{su} A_s \quad (79)$$

The allowable pull-out strengths have been tabulated in table V for 6061-T6 aluminum alloy parent material. Similar values can easily be calculated for other parent materials.

**TABLE V.-PARENT MATERIAL INTERNAL THREAD
STRENGTH**

Threaded insert			Parent material: 6061-T6 aluminum alloy ^a
Specification	Size code ^b	Internal thread	P _{ult} , lb
MS51830E	101L	#2 - 56	424
	102L	#4 - 40	815
	103L	#6 - 32	888
	104L	#8 - 32	1806
	201L	#10 - 32	2552
	202L	1/4 - 28	4660
	203L	5/16 - 24	6267
	204L	3/8 - 24	9088
	205L	7/16 - 20	12436
	206L	1/2 - 20	15744
MS51831F	207L	9/16 - 18	27667
	208L	5/8 - 18	33521
	209L	3/4 - 16	66091

^aAluminum properties taken from MIL-HDBK-5F, Table 3.6.2.0(b₁).

^bInternal locking thread, externally key locked. Other sizes, lengths, and thread pitches are available, including Extra Heavy Duty (MS51832C) inserts. The allowables for these inserts may be calculated in the same manner.

MARGIN OF SAFETY CRITERIA

For all three modes of failure, the margin of safety is given as

$$MS = \frac{P_{ult}}{P_b} - 1.0 \quad (80)$$

The margin of safety should be calculated for all three modes of failure, for ultimate strength only, to determine the limiting mode of failure.

NUT STRENGTH

Standard MS Class II nuts (including fixed and floating plate nuts) are designed to develop the full tensile strength of a bolt having an ultimate tensile strength of 125 ksi when the tensile area (A_t) is based on the basic pitch diameter of the bolt. As such, the nut strength may be expressed as

$$P_{ult} = (125,000) A_t \quad (81)$$

The ultimate strengths for the Class II nuts (ref. 11) have been tabulated and are listed in table VI.

**TABLE VI.-FAILURE LOADS FOR A-286
AND 300 SERIES CRES NUTS**

Diameter code	P_{ult} , lb
#2 - 56	440
#4 - 40	750
#6 - 32	1130
#8 - 32	1720
#10 - 32	2460
1/4 - 28	4580
5/16 - 24	7390
3/8 - 24	11450
7/16 - 20	15450
1/2 - 20	21110
9/16 - 18	26810
5/8 - 18	34130
3/4 - 16	50020

The margin of safety for the nut may be calculated using equation (80).

TORQUE LIMITS

Tables VII, VIII, and IX were derived from MSFC-STD-486B (ref. 3) for tensile applications. The torque values given in MSFC-STD-486B have been reduced in proportion to the relative material strengths given in MIL-HDBK-5F.

**TABLE VII.-TORQUE VALUES FOR A-286^a SCREW THREAD
FASTENING SYSTEMS^b**

Nominal ^c size, in.	Nut cadmium plated per QQ-P-416 ^d , in.-lb	Lubricated with dry film lubricant ^e , in.-lb	Lubricated with calcium grease ^f , in.-lb
#10 (0.190)	21 - 23	19 - 22	17 - 18
1/4	53 - 58	48 - 54	39 - 43
5/16	119 - 132	106 - 117	77 - 85
3/8	240 - 266	208 - 299	154 - 171
7/16	399 - 441	364 - 402	249 - 275
1/2	644 - 712	591 - 653	386 - 426
9/16	922 - 1019	877 - 970	538 - 595
5/8	1297 - 1433	1233 - 1362	734 - 812
3/4	2276 - 2516	2232 - 2467	1233 - 1362

^aAssumes 130 ksi ultimate tensile strength.

^bAdd locking torque of self-locking devices to torques values specified in the table. Assumes use of countersunk washers under the bolt heads and plain washers under nuts.

^cBolts are furnished with bare/passivated finish.

^dNuts are plated per QQ-P-416, Type II, Class 3 and **Use Is Limited to 446 °F.**

^eBolts and nuts shall be fully coated with MIL-L-8937 lubricant and **Use Is Limited to 446 °F.** Lubricant shall be listed on QPL 8937.

^fNuts are plated per QQ-P-416, Type II, Class 3 and CONOCO HD Calcium Grease No. 2 (or equivalent) shall be applied to the structure and bolt threads, shank, and washer of the fastener system. **Use Is Limited to 446 °F.**

**TABLE VIII.-TORQUE VALUES FOR 300 CRES^a SCREW THREAD
FASTENING SYSTEMS^b**

Nominal size, in.	Passivated, in.-lb	Plated, in.-lb	Lubricated, in.-lb
#10 (0.190)	29 - 31	23 - 24	17 - 18
1/4	61 - 64	48 - 51	36 - 38
5/16	113 - 119	90 - 95	67 - 71
3/8	195 - 205	156 - 164	117 - 123
7/16	325 - 342	260 - 274	195 - 205
1/2	433 - 456	347 - 365	260 - 274
9/16	607 - 639	485 - 511	364 - 383
5/8	867 - 913	694 - 730	521 - 548
3/4	1248 - 1314	997 - 1049	746 - 785

^a300 Series CRES bolts have 73 ksi minimum ultimate tensile strength.

^bAdd locking torque of self-locking devices to torque values specified in the table.

Assumes use of countersunk washers under bolt heads and plain washers under nuts.

**TABLE IX.-TORQUE VALUES^{ab} FOR SMALL DIAMETER
 SCREW THREAD FASTENING SYSTEMS**

Nominal size, in.	Material	
	300 Series CRES in.-oz	A-286 Alloy in.-oz
#2 - 56 (0.086)	26 - 28	47 - 52
#4 - 40 (0.112)	55 - 60	100 - 110
#6 - 32 (0.138)	102 - 112	185 - 204
#8 - 32 (0.164)	181 - 200	340 - 375

^a When lubricants are used, tighten to the minimum torque value in the table.

^b When self-locking devices are used, tighten to the maximum torque value in the table unless running torques are directly measured.

These torque tables should be followed in conjunction with the procedures and restrictions set forth in MSFC-STD-486B. If a particular fastener arrangement or application (e.g., shear) is encountered, but not listed here, the parent document should again be sought for the appropriate torque levels.

REFERENCES

1. Criteria for Preloaded Bolts. NSTS-08307, 1989.
2. Barrett, R.T.: Fastener Design Manual. NASA RP-1228, 1990.
3. Wood, C.M.: Standard Threaded Fasteners, Torque Limits For. MSFC-STD-486B, Nov. 1992.
4. Shigley, J.E.; and Mischke, C.R.: Fastening, Joining, and Connecting, A Mechanical Designers' Workbook. McGraw-Hill Publishing Co., New York, 1990.
5. Payload Flight Equipment Requirements for Safety-Critical Structures. JA-418, Rev. A, 1989.
6. Shigley, J.E.; and Mitchell, L.D.: Mechanical Engineering Design, Fourth Ed., McGraw-Hill Publishing Co., New York, 1983.
7. Bruhn, E.F.: Analysis and Design of Flight Vehicle Structures. Jacobs Publishing, Co., Carmel, Indiana, 1973.
8. Federal Standard: Screw-Thread Standards For Federal Service. FED-STD-H28, 1978.
9. Metallic Materials and Elements for Aerospace Vehicle Structures. MIL-HDBK-5F, 1990.
10. Astronautic Structures Manual. NASA TM X-73305, vol. I, 1975.
11. Nut, Self Locking, 250 °F, 450 °F, and 800 °F. MIL-N-25027F, 1994.

REPORT DOCUMENTATION PAGE

Form Approved

OMB No. 0704-0188

Public reporting burden for this collection of information is estimated to average 1 hour per response, including the time for reviewing instructions, searching existing data sources, gathering and maintaining the data needed, and completing and reviewing the collection of information. Send comments regarding this burden estimate or any other aspect of this collection of information, including suggestions for reducing this burden, to Washington Headquarters Services, Directorate for Information Operations and Reports, 1215 Jefferson Davis Highway, Suite 1204, Arlington, VA 22202-4302, and to the Office of Management and Budget, Paperwork Reduction Project (0704-0188), Washington, DC 20503.

1. AGENCY USE ONLY (Leave blank)		2. REPORT DATE December 1995	3. REPORT TYPE AND DATES COVERED Technical Memorandum	
4. TITLE AND SUBTITLE Preloaded Joint Analysis Methodology for Space Flight Systems			5. FUNDING NUMBERS WU-None	
6. AUTHOR(S) Jeffrey A. Chambers				
7. PERFORMING ORGANIZATION NAME(S) AND ADDRESS(ES) National Aeronautics and Space Administration Lewis Research Center Cleveland, Ohio 44135-3191			8. PERFORMING ORGANIZATION REPORT NUMBER E-9672	
9. SPONSORING/MONITORING AGENCY NAME(S) AND ADDRESS(ES) National Aeronautics and Space Administration Washington, D.C. 20546-0001			10. SPONSORING/MONITORING AGENCY REPORT NUMBER NASA TM-106943	
11. SUPPLEMENTARY NOTES Responsible person, Jeffrey A. Chambers, organization code 4320, (216) 433-8612.				
12a. DISTRIBUTION/AVAILABILITY STATEMENT Unclassified - Unlimited Subject Category 37 This publication is available from the NASA Center for Aerospace Information, (301) 621-0390.			12b. DISTRIBUTION CODE	
13. ABSTRACT (Maximum 200 words) This report contains a compilation of some of the most basic equations governing simple preloaded joint systems and discusses the more common modes of failure associated with such hardware. It is intended to provide the mechanical designer with the tools necessary for designing a basic bolted joint. Although the information presented is intended to aid in the engineering of space flight structures, the fundamentals are equally applicable to other forms of mechanical design.				
14. SUBJECT TERMS Fastener design; Bolts; Nuts; Inserts; Torque table; Preloaded joint			15. NUMBER OF PAGES 29	
			16. PRICE CODE A03	
17. SECURITY CLASSIFICATION OF REPORT Unclassified	18. SECURITY CLASSIFICATION OF THIS PAGE Unclassified	19. SECURITY CLASSIFICATION OF ABSTRACT Unclassified	20. LIMITATION OF ABSTRACT	