

INCH-POUND

MS21251K
 10 January 2001
 SUPERSEDING
 MS21251J
 30 October 1999

MILITARY SPECIFICATION SHEET

TURNBUCKLE BODY, CLIP LOCKING

This specification sheet is approved for use by all Departments and Agencies of the Department of Defense.

The requirements for acquiring the product described herein shall consist of this specification sheet and the issue of the following specification listed in that issue of the Department of Defense Index of Specifications and Standards (DoDISS) specified in the solicitation: MIL-DTL-8878, QPL-8878.

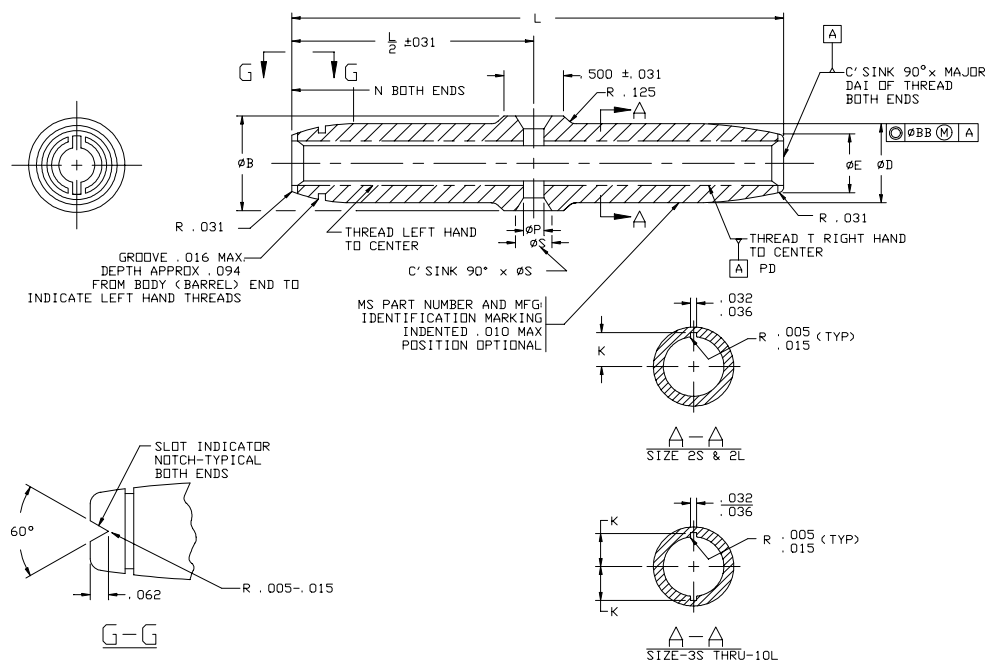


FIGURE 1. Turnbuckle body, clip locking.

MS21251K

TABLE I. Dash numbers and dimensions.

Dash number			Wire rope diameter		Minimum breaking strength lb	Thread T UNF-3B	L ±.031	ØB ±.005	N ±.031	ØD ±.005	ØE ± .005	K		ØS	ØP ±.005	ØBB	Applicable Locking clip MS21256	
Steel	Brass	Alloy	Nominal reference	Minimum								Minimum	Maximum					
2S	B2S	A2S	1/16	.062	800	.1380 (#6)-40	2.250	.250	.156	.219	.188	.0749	.0807	.187	.125	.020 FIM	-1	
2L	B2L	A2L					4.000										-2	
3S	B3S	A3S	3/32	.093	1,600	.1900 (#10)-32	2.250	.344	.188	.281	.250	.1009	.1048				-1	
3L	B3L	A3L					4.000										-2	
5S	B5S	A5S	5/32	.156	3,200	.2500 (1/4)-28	2.250	.438	.312	.391	.328	.1294	.1334				-1	
5L	B5L	A5L	1/				4.000										-2	
6S	B6S	A6S	3/16	.187	4,600	.3125 (5/16)-24	2.250	.500	.375	.438	.406	.1587	.1627				-1	
6L	B6L	A6L					4.000										-2	
8L	B8L	A8L	1/4	.250	8,000	.3750 (3/8)-24	4.250	.625	.500	.594	.469	.1900	.1939				.025 FIM	-2
9L	B9L	A9L	9/32	.281	12,750	.4375 (7/16)-20		.750	.594	.688	.563	.2185	.2225					-3
10L	B10L	A10L	5/16	.312	17,500	.5000 (1/2)-20		.875	.656	.813	.625	.2498	.2537	.250	.188			

1/ For .125 (1/8) inch diameter wire rope use -5 parts, minimum breaking strength 2,200 lb (ref).

REQUIREMENTS:

1. Material and protective treatment: Material and protective treatment shall be in accordance with MIL-DTL-8878.
2. Finish: Surface finish shall be RMS 125 or better.
3. Threads: Threads shall be in accordance with FED-STD-H28/20.
4. Bodies (barrels): Bodies (barrels) shall be marked with the year of manufacture.
5. Marking: Marking by impression stamping (or any other stress inducing method), if used, shall be done before stress relieving.
6. Part or identifying number (PIN): The PIN shall consist of the basic MS number, followed by a dash number, first letter following dash number indicates material, second number refers to the size, letter following size indicates length (short or long).

Example of PIN:

MS21251-B5L - Body (barrel), turnbuckle, brass, .2500 (1/4)-28 thread, long.

7. Tolerances: Unless otherwise specified, tolerances: decimals ± .010, angles ± 3°.

NOTES:

1. Dimensions are in inches.
2. Remove all burrs and break sharp edges. (See procurement specification for definition.)
3. Interpret drawing in accordance with ASME Y14.5M.
4. For clip locking of turnbuckles, see MS33736.

MS21251K

5. For .125 (1/8) inch diameter wire rope use -5 parts, minimum breaking strength 2,200 lb (ref).

6. A turnbuckle with a manufacturing date of 1978 or older shall not be used for replacement repairs since stress relieving was not required prior to this date.

7. In the event of a conflict between the text of this document and the references cited herein, the text of this document takes precedence.

8. Unless otherwise specified, issues of referenced documents are those in effect at the time of solicitation.

CHANGES FROM PREVIOUS ISSUE: Marginal notations are not used in this revision to identify changes with respect to the previous issue due to the extent of the changes.

Custodians:

Army - AV

Navy - AS

Air Force - 99

Preparing activity:

DLA - GS5

(Project 1560-0279)

Reviewers:

Navy - MC

Air Force - 82