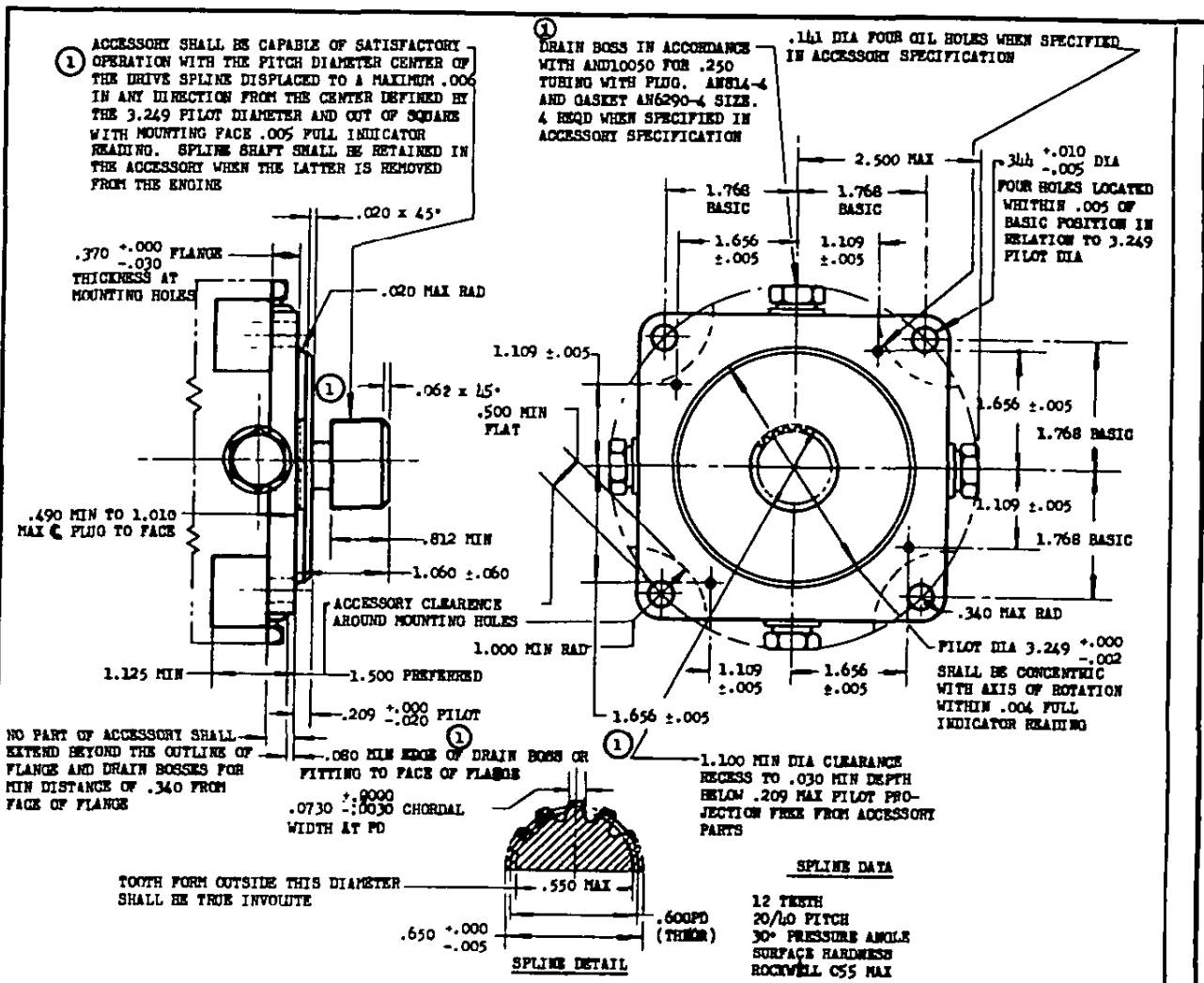


NOTE: When Government drawings, specifications, or other data are used for any purpose other than in connection with a contract with the Government, the user assumes all responsibility therefor. The Government hereby grants no responsibility, nor any obligation whatsoever, and the fact that the Government may have furnished, furnished, or in any way applied the said drawings, specifications, or other data is not to be regarded as an authorization or endorsement in any manner by the holder or any other person or corporation, or conveying any rights or pertains to manufacturers, etc., or will any person in violation of this may in any way be related thereto.



TYPE	Ts TORQUE LB-IN.	NOMINAL USE
XI-B	1500	LOW SPEED FLUID POWER PUMP
		PROPELLER CONTROL
XI-C	2000	LOW SPEED FLUID POWER PUMP

- ROTATION: CLOCKWISE AS VIEWED FROM OPPOSITE THE DRIVE END
- FLANGE OUTLINE AS DIMENSIONED IS A BASIC MAXIMUM AREA REQUIREMENT.
- THE ACCESSORY SHALL OPERATE SATISFACTORILY WITH OIL LEAKAGE FROM THE ENGINE INTO THE PILOT COMPARTMENT NOT EXCEEDING 2 CC PER HOUR. ACCESSORY CONTAINING DRIVE SHAFT SEALS TO PREVENT LEAKAGE OF FLUID FROM THE ACCESSORY SHALL BE PROVIDED WITH DRAIN BOSS AS SHOWN CONNECTED TO THE PILOT COMPARTMENT BETWEEN THE ENGINE SEAL AND THE ACCESSORY SEAL.
- ① WHEN THE ACCESSORY IS OPERATING AT A SPEED OF 1300 TO 4125 RPM THE ENGINE WILL FLOW A MINIMUM OF .25 GPH OF OIL TO ONE OIL HOLE AT A MINIMUM PRESSURE OF 5 PSI AND NOT EXCEEDING 70 PSI IF FLOW IS REDUCED BELOW .25 GPH TO .05 GPH.
- SPEED: NORMAL RATED SPEED SHALL BE 3750 RPM.
- ① STRENGTH: THE ACCESSORY SHALL PROVIDE A SHEAR SECTION THAT SHALL FAIL AT A TORQUE BELOW (Ts).
- REMOVE ALL BURRS AND SHARP EDGES.
- FOR DETAIL OF TYPE XI ENGINE DRIVE SEE AND20001.
- ① DIMENSIONS IN INCHES. UNLESS OTHERWISE SPECIFIED, TOLERANCES: DECIMALS ±.010, ANGLES ±2°.
- ① THIS DRAWING AND THE APPLICABLE ACCESSORY SPECIFICATIONS, TOGETHER, COMPLETELY DEFINE THE DESIGN REQUIREMENTS.