

INCH-POUND

AN7516 REV 4
w/Amendment 1
6 June 2007
SUPERSEDING
AN7516 REV 4
26 March 2007

DETAIL SPECIFICATION SHEET

ADAPTER, TIE DOWN AIRCRAFT FLOOR (2,500 LBS)

Inactive for new design after 28 September 1999.

This specification sheet is approved for use by all departments and agencies of the Department of Defense.

The requirements for acquiring the product described herein shall consist of this specification sheet and SAE AS7092, "Fittings, Cargo Tiedown, Aircraft".

REQUIREMENTS:

1. The material shall be steel in accordance with SAE AS7092.
2. Heat treatment shall be in accordance with SAE AS7092.
3. Unless otherwise specified, tolerances: fractions $\pm 1/64$ inches, angles $\pm 1/2$ degree.

NOTES:

1. Remove burrs and sharp edges.
2. Dimensions are in inches.
3. Interpret drawing in accordance with SAE AS7092.
4. Unless otherwise specified, issues of referenced documents are those in effect at the time of solicitation.
5. In the event of a conflict between the text of this document and the references cited herein, the text of this document takes precedence.

AN7516 REV 4
 w/Amendment 1

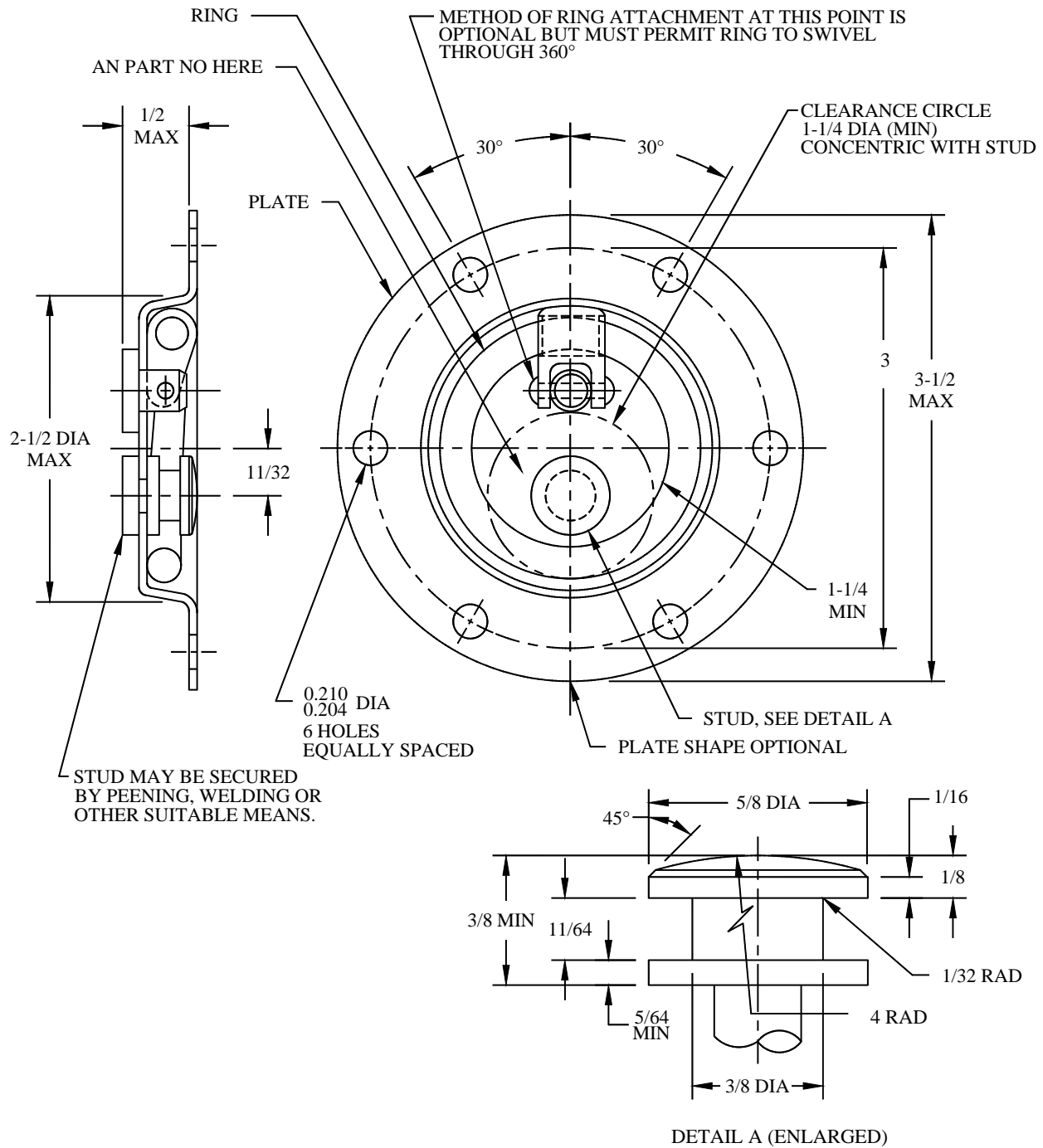


FIGURE 1. Aircraft floor tie down adapter (AN7516-1).

AN7516 REV 4
w/Amendment 1

AMENDMENT NOTATIONS: The margins of this specification are marked with vertical lines to indicate where modifications from this amendment were made. This was done as a convenience only and the Government assumes no liability whatsoever for any inaccuracies in these notations. Bidders and contractors are cautioned to evaluate the requirements of this document based on the entire content irrespective of the marginal notations.

Custodians:
Army - AV
Air Force - 99

Preparing Activity:
DLA - GS8

(Project 1670-2007-004)

Review Activity:
Air Force - 84

NOTE: The activities listed above were interested in this document as of the date of this document. Since organizations and responsibilities can change, you should verify the currency of the information above using the ASSIST database at <http://assist.daps.dla.mil>.