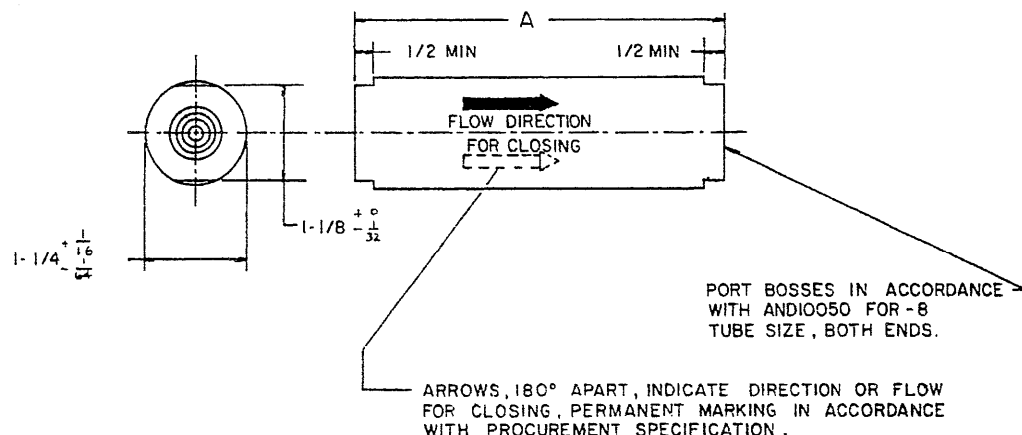


FED. SUP CLASS
 1650



FIRST DASH NO.	TUBE OD	A ± 1/16	THREAD T	RATED VOLUMETRIC CAPACITY CU IN.
(b) 4	1/4	4 13/16	7/16 20 NF 3	10, 20, 40, 60, 80, 120, 160, 200, 250
(b) 6	3/8	4 13/16	9/16 18 NF 3	
- 8	1/2	5 1/16	3/4 16 NF 3	

- (a) SECOND DASH NUMBER INDICATES RATED CAPACITY IN CUBIC INCHES.
 (b) PART NOS. AN6281-4 AND AN6281-6 INACTIVE FOR DESIGN AFTER 11 JULY 1951. USE AN6281-8 WITH ADAPTER.

- ③ FOR DEFINITION AND APPLICATION OF DRAWING STATUS NOTES, SEE MIL-STD-962.
 EXAMPLE OF PART NO.: AN6281-8-20 = FUSE FOR 1/2 OD TUBE WITH RATED CAPACITY OF 20 CUBIC INCHES.
 DIMENSION IN INCHES. UNLESS OTHERWISE SPECIFIED, TOLERANCES: FRACTION ± 1/64.
 THE AIRPLANE OR ENGINE MANUFACTURER SHALL ALLOW CLEARANCE FOR THE MAXIMUM DIMENSION SHOWN ON THIS DRAWING FOR INSTALLATION.
 TYPE I FUSE WILL RESET ITSELF WITHOUT REVERSE FLOW.

DISTRIBUTION STATEMENT A. Approved for public release; distribution is unlimited.

This military standard is approved by the Department of the Army and shall be used by that activity. All other military activities are required to employ this standard where suitable.

P. A.-USAF 71 Other Cust	INTERNATIONAL INTEREST	TITLE FUSE - HYDRAULIC QUANTITY MEASURING CLASS 3000TYPE I	MILITARY STANDARD AN 6281
AF -99	PROCUREMENT SPECIFICATION MIL-F-5508	SUPERSEDES:	SHEET OF