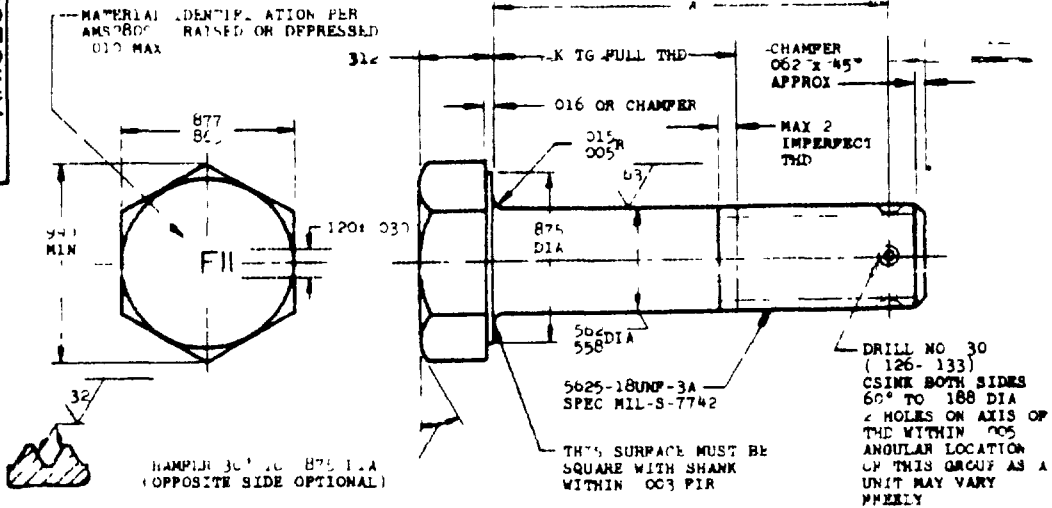


FED SUP CLASS  
530b

AN102501  
THRU  
AN102600



SECTION THRU THREALED PROFILE

L	A	+	0.006	PART NO	-	A	+	0.006	PART NO	-	A	+	0.006	PART NO
				2 500	2 340	1 562	AN102524	5 125	4 965	4 188	AN102545			
				2 625	2 465	1 688	AN102525	5 250	5 090	4 312	AN102546			
				2 750	2 590	1 812	AN102526	5 375	5 215	4 438	AN102547			
1 062	902	.25	AN102506	2 875	2 715	1 938	AN102527	5 500	5 340	4 562	AN102548			
1 125	965	.188	AN102507	3 000	2 840	2 062	AN102528	5 625	5 465	4 688	AN102549			
1 188	1 028	.250	AN102508	3 125	2 965	2 188	AN102529	5 750	5 590	4 812	AN102550			
1 250	1 091	.312	AN102509	3 250	3 090	2 312	AN102530	5 875	5 715	4 938	AN102551			
1 312	1 154	.375	AN102510	3 375	3 215	2 438	AN102531	6 000	5 840	5 062	AN102552			
1 375	1 217	.438	AN102511	3 500	3 340	2 562	AN102532							
1 438	1 280	.500	AN102512	3 625	3 465	2 688	AN102533							
1 500	1 343	.562	AN102513	3 750	3 590	2 812	AN102534							
1 562	1 406	.625	AN102514	3 875	3 715	2 938	AN102535							
1 625	1 469	.688	AN102515	4 000	3 840	3 062	AN102536							
1 688	1 532	.750	AN102516	4 125	3 965	3 188	AN102537							
1 750	1 595	.812	AN102517	4 250	4 090	3 312	AN102538							
1 812	1 658	.875	AN102518	4 375	4 215	3 438	AN102539							
1 875	1 721	.938	AN102519	4 500	4 340	3 562	AN102540							
2 000	1 784	1.000	AN102520	4 625	4 465	3 688	AN102541							
2 125	1 847	1.062	AN102521	4 750	4 590	3 812	AN102542							
2 250	1 910	1.125	AN102522	4 875	4 715	3 938	AN102543							
2 375	1 973	1.188	AN102523	5 000	4 840	4 062	AN102544							

NOTE: (1) SHANK SHALL BE STRAIGHT WITHIN .002 PER INCH OF BOLT LENGTH  
(2) THE CONCENTRICITY OF THREALED END IN RELATION TO THE SHANK SHALL BE WITHIN .006 PIR  
(3) THE CONCENTRICITY OF THE SHANK IN RELATION TO THE WASHER FACE DIAMETER AND HEXAGON SHALL BE WITHIN .026 PIR

MATERIAL STEEL AMS6322  
HARDNESS ROCKWELL C26-32  
FINISH CADMIUM PLATE AMS2400  
SURFACE ROUGHNESS AS107  
MANUFACTURING SPECIFICATION AMS7452

(3) INSPECTION ALL PARTS SHALL UNDERGO MAGNETIC INSPECTION IN ACCORDANCE WITH AMS264.

BREAK SHARP EDGE (0.015) UNLESS OTHERWISE SPECIFIED.  
DIMENSIONS IN INCHES UNLESS OTHERWISE SPECIFIED TOLERANCES, LINEAR DIMENSIONS & U.O. ANGULAR DIMENSIONS ±.02

DO NOT USE UNASSIGNED PART NUMBERS

INACTIVE FOR NEW DESIGN AFTER 3 MARCH 1969 NO SUPERSEDING STANDARD

THIS STANDARD WAS DEVELOPED COOPERATIVELY BY THE ENGINE AND PROPELLER UTILITY PARTS COMMITTEE OF THE SAE

P A AF-11  
CUST NAVY-AS  
ARMY-AV

AIR FORCE-NAVY AERONAUTICAL STANDARD

BOLT HEX HEAD DRILLED SHANK, 5625 18

AN102501

THRU

AN102600