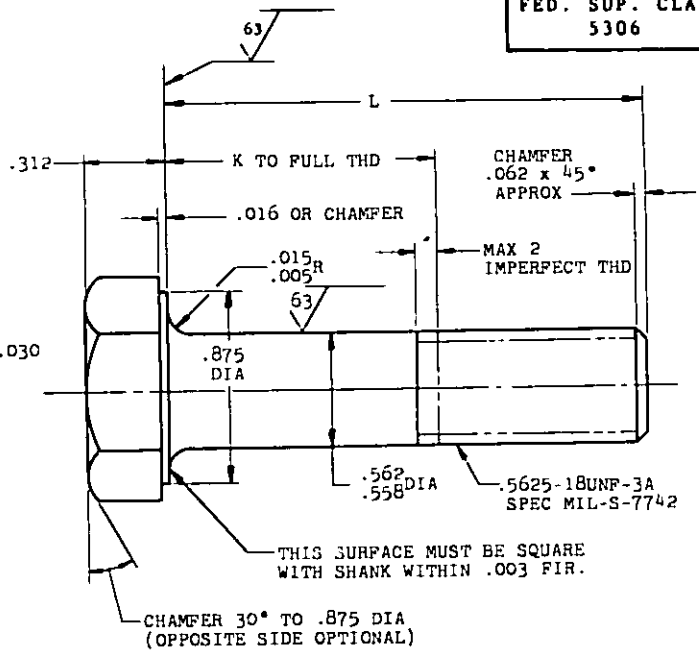
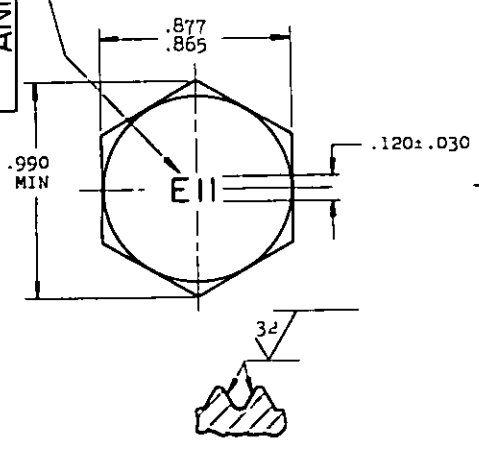


FED. SUP. CLASS.  
 5306

AN101601  
 THRU  
 AN101700

MATERIAL IDENTIFICATION PER  
 AMS2800. RAISED OR DEPRESSEL  
 .010 MAX



SECTION THRU THREAD PROFILE

| L     | K<br>+.000<br>-.060 | PART NO. | L     | K<br>+.000<br>-.060 | PART NO. | L     | K<br>+.000<br>-.060 | PART NO. | L     | K<br>+.000<br>-.060 | PART NO. |
|-------|---------------------|----------|-------|---------------------|----------|-------|---------------------|----------|-------|---------------------|----------|
|       |                     |          | 1.750 | .812                | AN101617 | 3.375 | 2.438               | AN101631 | 5.125 | 4.188               | AN101645 |
|       |                     |          | 1.812 | .875                | AN101618 | 3.500 | 2.562               | AN101632 | 5.250 | 4.312               | AN101646 |
|       |                     |          | 1.875 | .938                | AN101619 | 3.625 | 2.688               | AN101633 | 5.375 | 4.438               | AN101647 |
| 1.062 | .125                | AN101606 | 2.000 | 1.062               | AN101620 | 3.750 | 2.812               | AN101634 | 5.500 | 4.562               | AN101648 |
| 1.125 | .188                | AN101607 | 2.125 | 1.188               | AN101621 | 3.875 | 2.938               | AN101635 | 5.625 | 4.688               | AN101649 |
| 1.188 | .250                | AN101608 | 2.250 | 1.312               | AN101622 | 4.000 | 3.062               | AN101636 | 5.750 | 4.812               | AN101650 |
| 1.250 | .312                | AN101609 | 2.375 | 1.438               | AN101623 | 4.125 | 3.188               | AN101637 | 5.875 | 4.938               | AN101651 |
| 1.312 | .375                | AN101610 | 2.500 | 1.562               | AN101624 | 4.250 | 3.312               | AN101638 | 6.000 | 5.062               | AN101652 |
| 1.375 | .438                | AN101611 | 2.625 | 1.688               | AN101625 | 4.375 | 3.438               | AN101639 |       |                     |          |
| 1.438 | .500                | AN101612 | 2.750 | 1.812               | AN101626 | 4.500 | 3.562               | AN101640 |       |                     |          |
| 1.500 | .562                | AN101613 | 2.875 | 1.938               | AN101627 | 4.625 | 3.688               | AN101641 |       |                     |          |
| 1.562 | .625                | AN101614 | 3.000 | 2.062               | AN101628 | 4.750 | 3.812               | AN101642 |       |                     |          |
| 1.625 | .688                | AN101615 | 3.125 | 2.188               | AN101629 | 4.875 | 3.938               | AN101643 |       |                     |          |
| 1.688 | .750                | AN101616 | 3.250 | 2.312               | AN101630 | 5.000 | 4.062               | AN101644 |       |                     |          |

- NOTE: (1) SHANK SHALL BE STRAIGHT WITHIN .002 FIR. PER INCH OF BOLT LENGTH.  
 (2) THE CONCENTRICITY OF THREAD PD IN RELATION TO THE SHANK SHALL BE WITHIN .006 FIR.  
 (3) THE CONCENTRICITY OF THE SHANK IN RELATION TO THE WASHER FACE DIAMETER AND HEXAGON SHALL BE WITHIN .026 FIR.

MATERIAL: STEEL AMS6322  
 HARDNESS: ROCKWELL C26-32  
 FINISH: CADMIUM PLATE AMS2400  
 SURFACE ROUGHNESS: AS107

- MANUFACTURING SPECIFICATION: AMS7452  
 (3) INSPECTION: ALL PARTS SHALL UNDERGO MAGNETIC INSPECTION IN ACCORDANCE WITH AMS2640.  
 BREAK SHARP EDGES .003-.015 UNLESS OTHERWISE SPECIFIED.

DIMENSIONS IN INCHES. UNLESS OTHERWISE SPECIFIED: TOLERANCES; LINEAR DIMENSIONS ±.010, ANGULAR DIMENSIONS ±2°.

DO NOT USE UNASSIGNED PART NUMBERS.

(2) INACTIVE FOR NEW DESIGN AFTER 3 MARCH 1969 NO SUPERSEDING STANDARD.

THIS STANDARD WAS DEVELOPED COOPERATIVELY BY THE ENGINE AND PROPELLER UTILITY PARTS COMMITTEE OF THE SAE.

|  |                                      |                              |
|--|--------------------------------------|------------------------------|
| P.A. AF-11<br>CUST. NAVY-AS<br>ARMY-AV | AIR FORCE-NAVY AERONAUTICAL STANDARD | AN101601<br>THRU<br>AN101700 |
|  | BOLT - HEX HEAD .5625-18             |                              |

DISTRIBUTION STATEMENT A. Approved for public release; distribution is unlimited.

NOTICE: When Government drawings, specifications, or other data are used for any purpose other than in connection with a definitely related Government procurement operation, the United States Government thereby incurs no responsibility, nor any obligation whatsoever; and the fact that the Government may have furnished, furnished, or in any way supplied the said drawings, specifications, or other data is not to be interpreted by implication or otherwise as in any manner benefiting the holder or any other person or corporation, or conveying any rights or permission to manufacture, use, or sell any product or invention that may in any way be related thereto.

NOTE: This drawing was approved by joint action of the Air Force and Navy Departments as the Air Force-Navy standard for this product. This drawing supersedes all antecedent standard drawings for the same product and shall become effective for the procurement of aeronautical supplies, or for use in new design, not later than 6 months after the latest date of approval above.

APPROVED Jun 4, 1969 REVISED 1 Jul 61, 2 Mar 69 3 10 June 1986