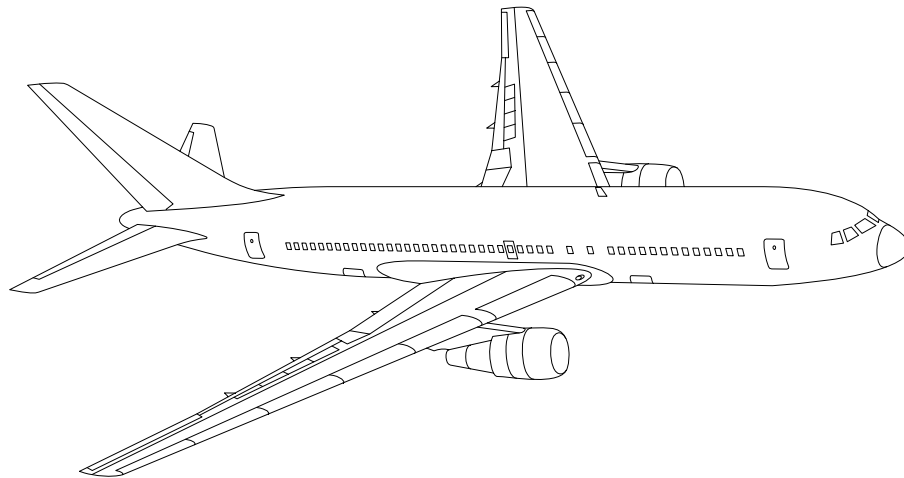


AIRLINE QUARTERLY FINANCIAL REVIEW

FOURTH QUARTER 2014



PASSENGER NATIONALS



DEPARTMENT OF TRANSPORTATION
OFFICE OF AVIATION ANALYSIS
COMPETITION AND POLICY ANALYSIS DIVISION

	<u>DESCRIPTION</u>	<u>PAGE</u>
Introduction		4
Total System Passenger Nationals		5
Chart 1	Operating and (Loss Net Profit) For Fourth Quarter 2014	6
Chart 2	Operating and Net Profit (Loss) 12 Months Ended Fourth Quarter 2014	6
Chart 3	Operating Profit (Loss) By Quarter	7
Chart 4	Net Income (Loss) By Quarter	7
Chart 5	Operating Profit (Loss) By 12-Month Ending Periods ...	8
Chart 6	Net Income (Loss) By 12-Month Ending Periods	8
Chart 7	Operating Revenue Per Revenue Ton-Mile Percent Change From Same Period A Year Earlier	9
Chart 8	Ton Load Factor Percentage Point Change From Year Earlier	9
Chart 9	Operating Expense Per Revenue Ton-Mile Percent Change From Same Period A Year Earlier	10
Chart 10	Operating Expense Per Available Ton-Mile Percent Change From Same Period A Year Earlier	10
Chart 11	Passenger Revenues Per Revenue Passenger-Mile, Percent Change From Same Period A Year Earlier	11
Chart 12	Revenue Passenger-Miles, Percent Change From Same Period A Year Earlier	11
Chart 13	Available Seat-Miles, Percent Change From Same Period A Year Earlier	12
Chart 14	Passenger Load Factor, Percentage Point Change From Same Period A Year Earlier	12
Chart 15	Passenger (RPM) Yield	13
Chart 16	Passenger Load Factor	13
 Individual Passenger Carriers :		
Air Wisconsin Airlines		14
Allegiant Air		15
Compass Air		16
Endeavor Air		17
Executive Airlines		18
ExpressJet		19
GoJet Airlines d/b/a United Express		20
Horizon Air		21
Mesa Airlines		22
PSA Airlines		23
Republic Airlines		24
Spirit Air Lines		25
Sun Country Airlines d/b/a Mn Airlines		26
USA Jet Airlines		27

<u>DESCRIPTION</u>	<u>PAGE</u>
Individual Passenger Carriers (Cont.):	
Virgin America	28
Vision Airlines	29
Comparison of Individual National Operating Profit	30
Comparison of Individual National Net	31
Comparison of Individual National Scheduled Passenger Load Factor .	32
Comparison of Individual National Scheduled Passenger	33
Comparison of Individual National Operating Profit Margin	34
Comparison of Individual National Total Debt and Debt To Investment	35
Footnotes	36
Explanation of Line Items	37
Carrier Alpha Decode List	39

INTRODUCTION

This report contains staff comments, tables and charts on the financial condition of the U.S. passenger national airlines.

The data are presented on both a carrier group and an individual carrier basis. Data are presented for the most recent quarterly period and the comparable quarter a year earlier, and also on a 12-month ended basis as at the end of the five most recent quarters. In addition, data on changes over comparable periods 12-months earlier are presented. A graphic presentation of comparative trends, on a carrier group basis, is made for several unit and overall financial indicators. In the case of merged carriers, data for the carriers involved have been combined and presented under the name of the surviving carrier so that meaningful comparisons could be made.

All data presented in this financial and traffic review are derived from data reported to the U.S. Department of Transportation on Form 41 Schedules by Large Certificated Air Carriers.

Suggestions from users for the improving either the scope, presentation, or utility of this review are invited. It will also be appreciated if suggestions, discrepancies, and errors in the data are called to the attention of the Competition and Policy Analysis Division, Office of Aviation Analysis, Office of the Secretary, U.S. Department of Transportation, Washington, D.C. 20590.

QUARTERLY FINANCIAL & TRAFFIC REVIEW

SYSTEM OPERATIONS

System Passenger Nationals

ITEMS	QUARTER ENDED		12 MONTHS ENDED				
	2014/12	2013/12	2014/12	2014/09	2014/06	2014/03	2013/12
<u>FINANCIAL RESULTS: (\$Millions)</u>							
1 Operating Revenues	2,669.7	2,541.2	10,625.6	10,497.1	10,401.2	10,245.5	10,185.9
2 Operating Expenses	2,507.7	2,362.1	9,840.2	9,694.6	9,627.6	9,507.1	9,438.6
3 Operating Profit (Loss)	162.0	179.1	785.4	802.5	773.5	738.4	747.3
4 Net Income (Loss)	78.7	79.8	465.9	467.1	444.8	349.6	421.5
<u>TRAFFIC: (Thousands)</u>							
5 RPMs - Scheduled Svc.	20,980.5	19,401.0	83,576.2	81,996.7	80,916.3	79,658.7	78,412.5
6 ASMs - Scheduled Svc.	26,072.4	24,219.2	102,116.7	100,263.5	99,274.0	98,205.5	97,157.5
7 Overall RTMs (All Svc.)	2,118.9	1,973.2	8,449.5	8,303.8	8,207.7	8,095.9	7,978.5
8 Overall ATMs (All Svc.)	3,352.9	3,104.0	13,232.4	12,983.5	12,785.7	12,566.8	12,332.7
<u>YIELD & UNIT COST & PROFITS: (Cents)</u>							
9 Operating Revenue per RTM	126.0	128.8	125.8	126.4	126.7	126.6	127.7
10 Operating Expense per RTM	118.4	119.7	116.5	116.7	117.3	117.4	118.3
11 Operating Profit (Loss) per RTM	7.6	9.1	9.3	9.7	9.4	9.1	9.4
12 Operating Expense per ATM	74.8	76.1	74.4	74.7	75.3	75.7	76.5
13 Passenger Revenue per RPM	10.61	10.94	10.62	10.70	10.74	10.75	10.92
<u>FINANCIAL RATIOS:</u>							
14 Operating Revenues to Total Investment	*	*	1.45	1.49	1.55	1.60	1.63
15 Times Interest Earned	*	*	3.50	3.54	3.48	3.23	4.23
16 Current Assets to Current Liabilities	*	*	1.21	1.22	1.24	1.24	1.22
17 No. of Days Cash Coverage of Cash Exp.	*	*	48.5	48.4	36.1	36.0	43.2
<u>FINANCIAL PERCENTAGES:</u>							
18 Operating Profit (Loss) to Operating Revenue	6.1	7.0	7.4	7.6	7.4	7.2	7.3
19 Net Income to Stockholders Equity	*	*	17.5	19.8	20.0	17.3	22.6
20 Corporate Return on Investment	*	*	9.5	9.9	10.0	9.1	9.6
21 Debt to Total Investment	*	*	55.0	65.0	66.2	66.2	67.5
<u>LOAD FACTOR: (%)</u>							
22 Passenger Load Factor (Sch. Svc.)	80.5	80.1	81.8	81.8	81.5	81.1	80.7
23 Ton Load Factor (All Svc.)	76.2	75.3	76.5	76.3	76.2	75.9	75.1
<u>Employment & Productivity:</u>							
24 Employment, Total Weighted Avg CY	37,238	36,106	37,084	36,799	36,296	35,801	35,524
25 Overall RTM's per Employee (000)	113.8	109.3	455.7	451.3	452.3	452.3	449.2

	CHANGE OVER COMPARABLE PERIOD 12 MONTHS EARLIER						
	2014/12	2013/12	2014/12	2014/09	2014/06	2014/03	2013/12
26 Operating Revenues (%)	5.1	3.7	4.3	4.0	3.3	-1.6	-4.6
27 Operating Expenses (%)	6.2	1.9	4.3	3.2	1.6	-3.5	-7.3
28 Operating Profit (Loss) (in Millions \$)	-17.1	47.1	38.0	102.2	185.6	180.2	251.8
29 Net Income (Loss)(in Millions \$)	-1.2	69.1	44.4	114.7	312.3	338.6	588.5
30 RPMs (Sch. Svc.) (%)	8.1	5.6	6.6	6.0	5.4	4.3	2.6
31 ASMs (Sch. Svc.) (%)	7.7	5.7	5.1	4.6	4.2	3.4	1.6
32 Operating Revenues per RTM (%)	-2.2	-1.6	-1.5	-1.4	-1.5	-5.4	-6.6
33 Operating Expense per RTM (%)	-1.1	-3.4	-1.6	-2.1	-3.2	-7.3	-9.2
34 Passenger Revenue per RPM (Sch. Svc.)(%)	-3.0	-2.4	-2.8	-2.6	-2.7	-6.8	-7.7

COMPARISONS AMONG PASSENGER NATIONAL GROUP 3/

Chart 1.
Operating and Net Profit (Loss) (\$Millions)
For the Quarter Ended December 2014

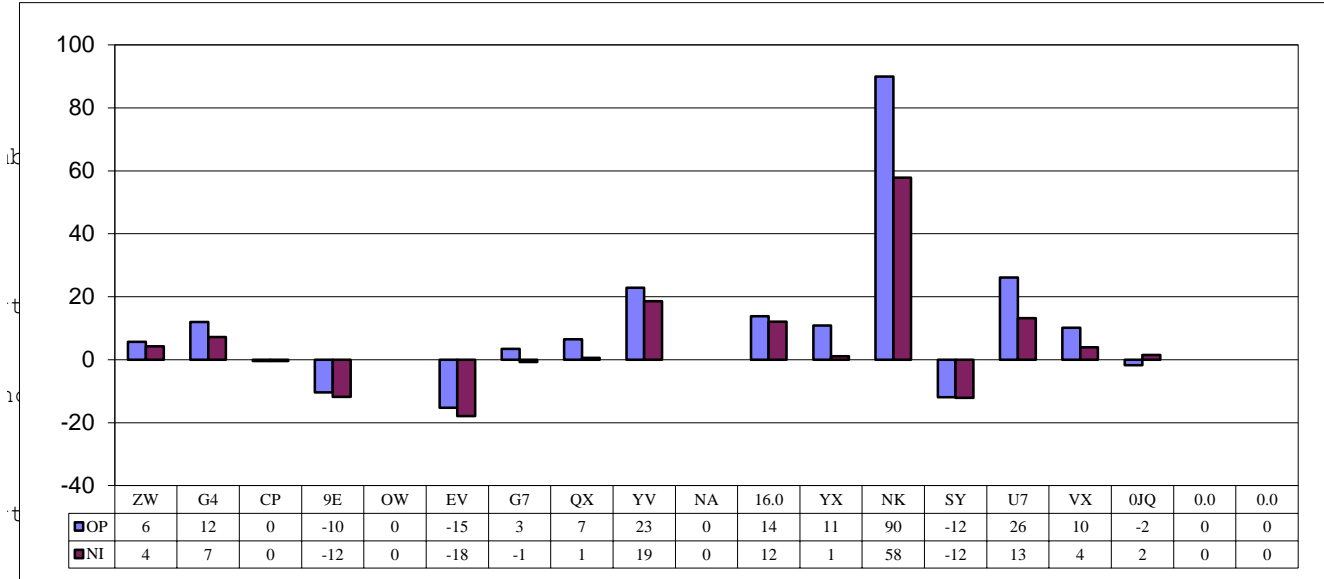
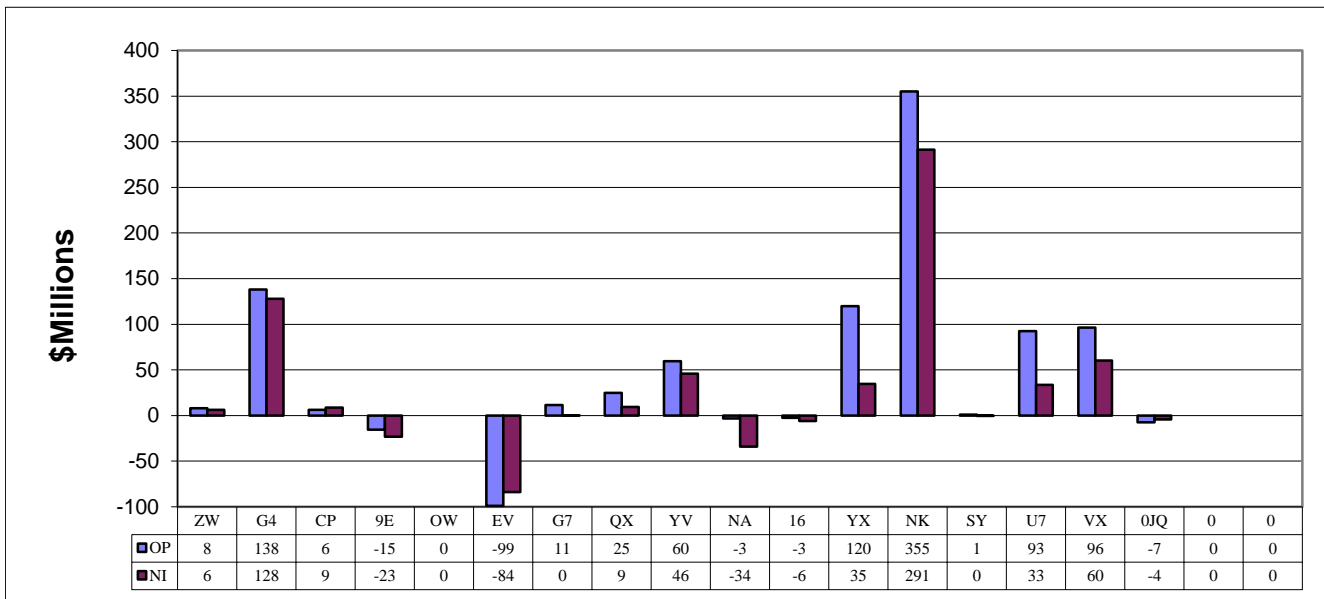


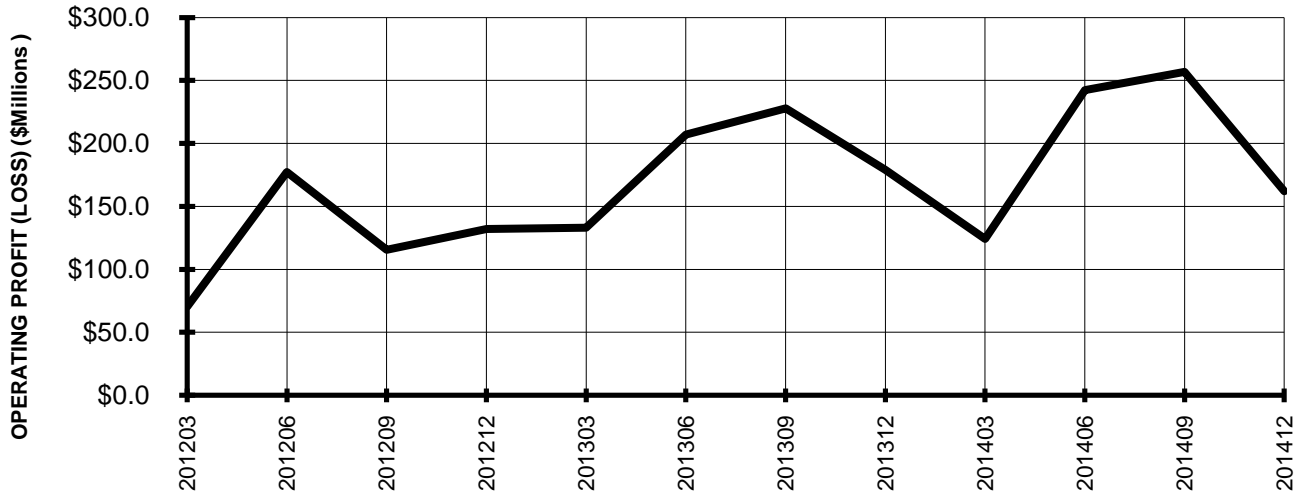
Chart 2.
Operating and Net Profit (Loss) (\$Millions)
For the 12 Months Ended December 2014



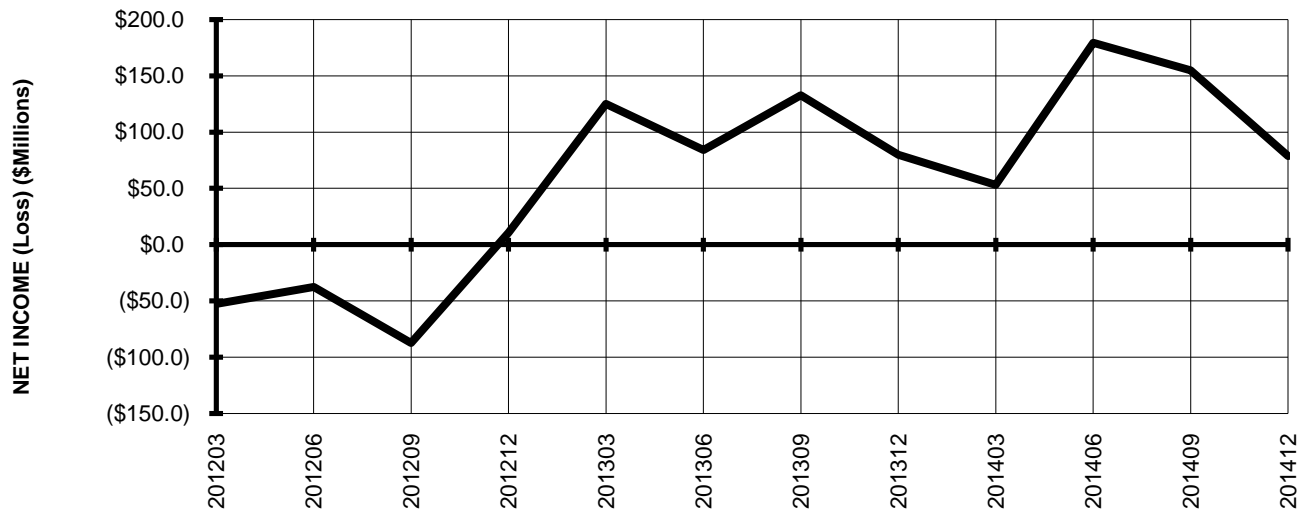
3/ See carrier decode page for carrier names

TOTAL PASSENGER NATIONALS (SYSTEM) BY QUARTER

**Chart 3.
 OPERATING PROFIT (LOSS)
 (\$MILLIONS)**

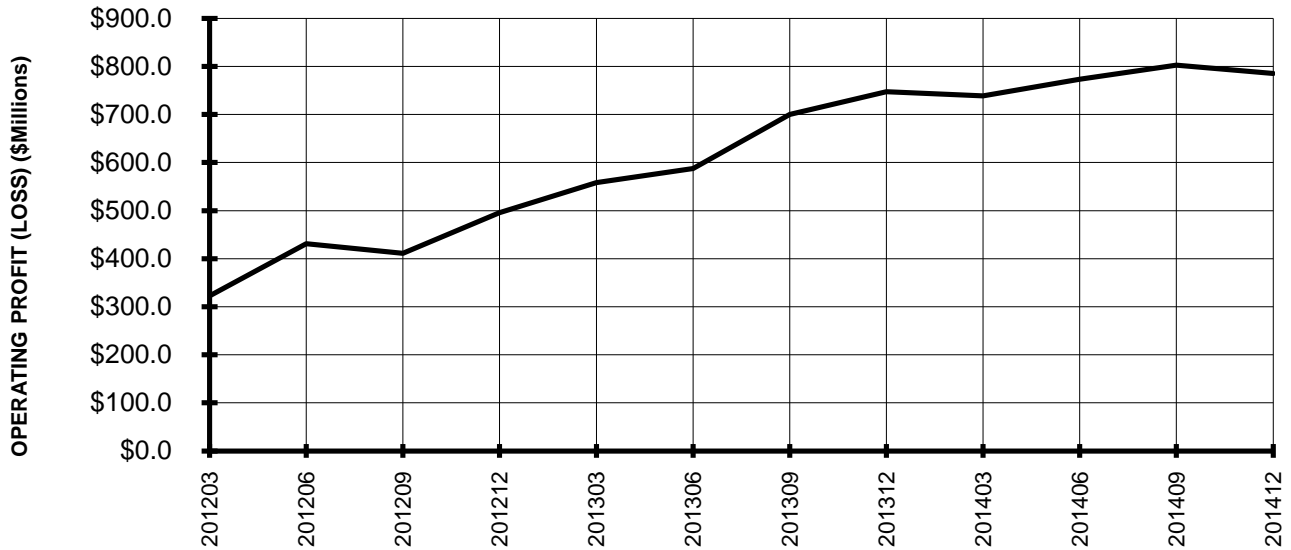


**Chart 4.
 NET INCOME (LOSS)
 (\$MILLIONS)**

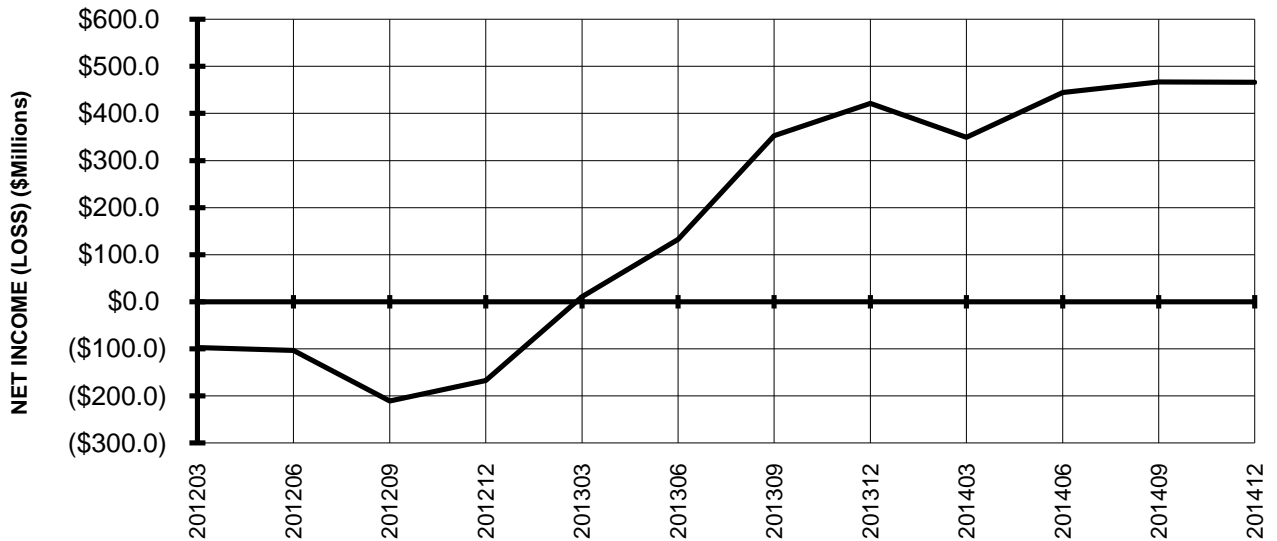


TOTAL PASSENGER NATIONALS (SYSTEM) BY 12-MONTH ENDING PERIODS

**Chart 5.
OPERATING PROFIT (LOSS)
(\$MILLIONS)**



**Chart 6.
NET INCOME (LOSS)
(\$MILLIONS)**



TOTAL PASSENGER NATIONALS (SYSTEM) QUARTERLY AND 12-MONTH BASIS

Chart 7.
OPERATING REVENUE PER REVENUE TON-MILE
PERCENT CHANGE FROM SAME PERIOD A YEAR EARLIER

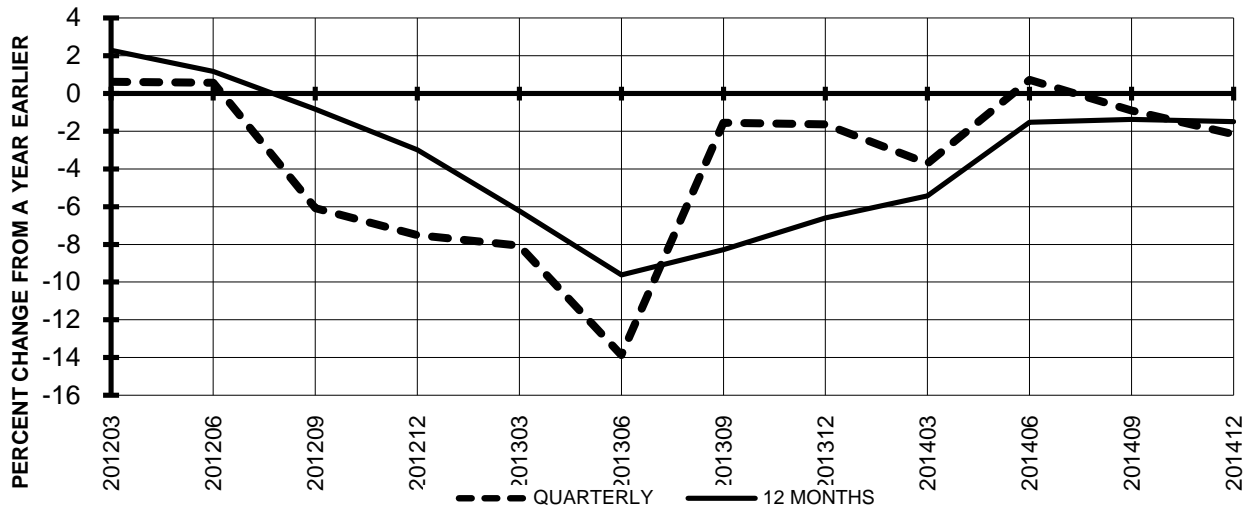
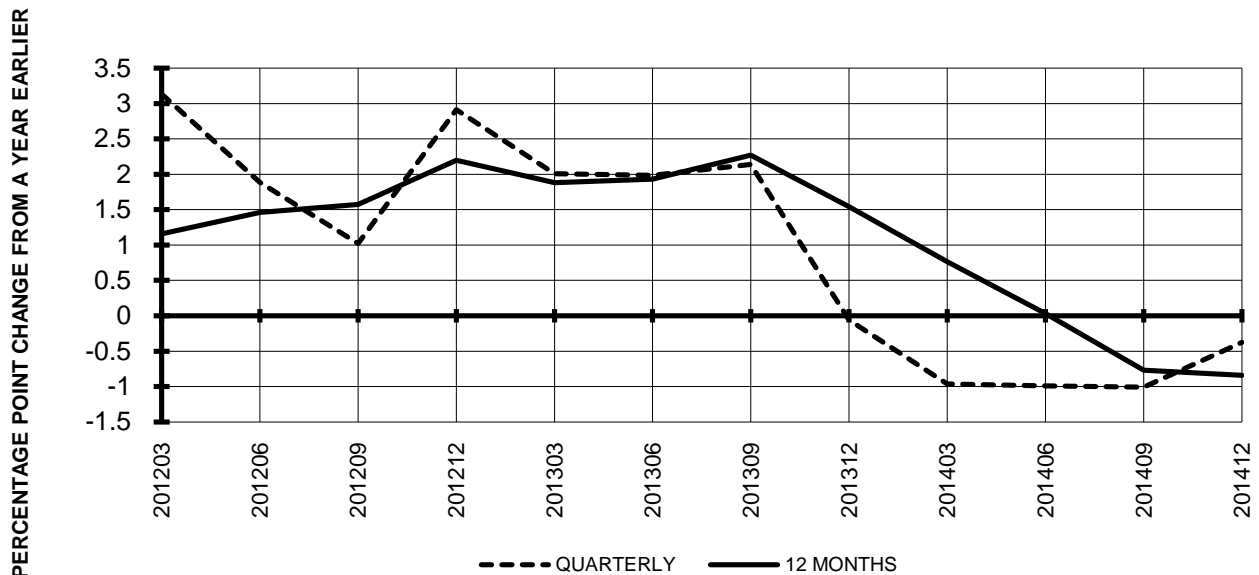


Chart 8.
TON LOAD FACTOR PERCENTAGE POINT CHANGE
OVER FROM PERIOD A YEAR EARLIER



TOTAL PASSENGER NATIONALS (SYSTEM) QUARTERLY AND 12-MONTH BASIS

Chart 9.
OPERATING EXPENSE PER REVENUE TON-MILE
PERCENT CHANGE FROM SAME PERIOD A YEAR EARLIER

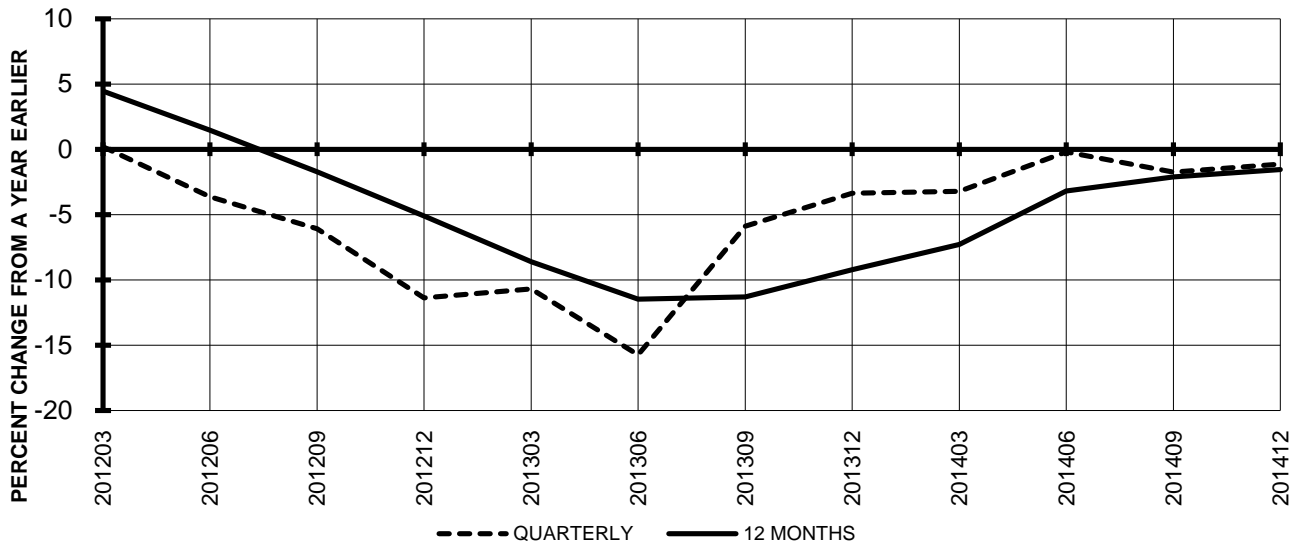
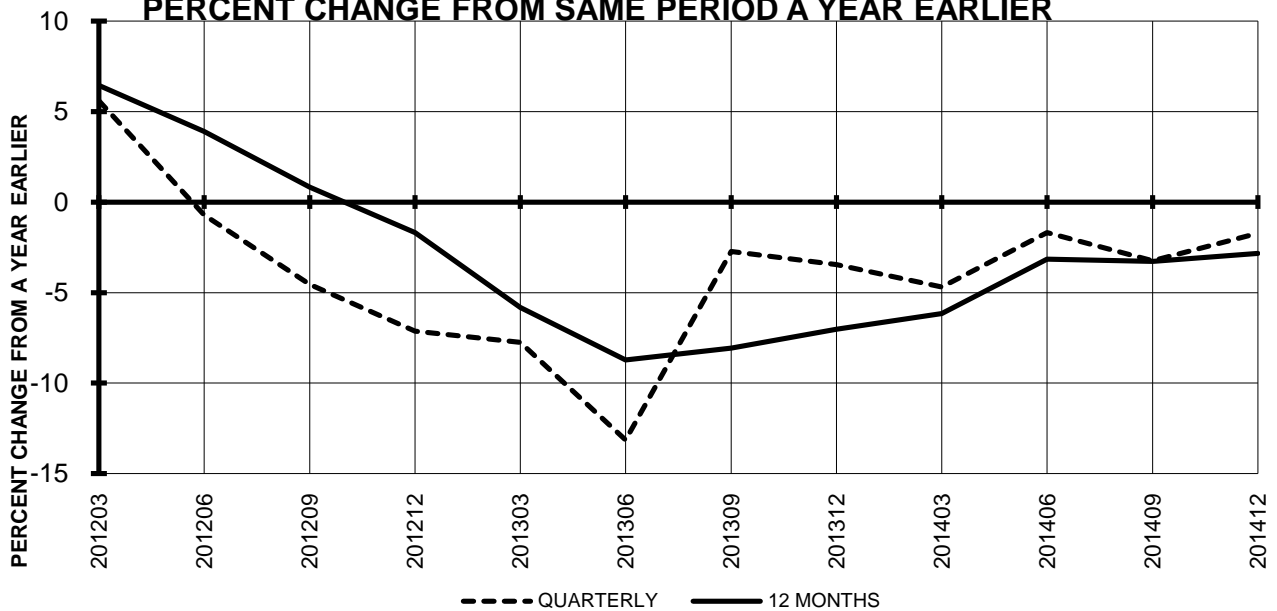
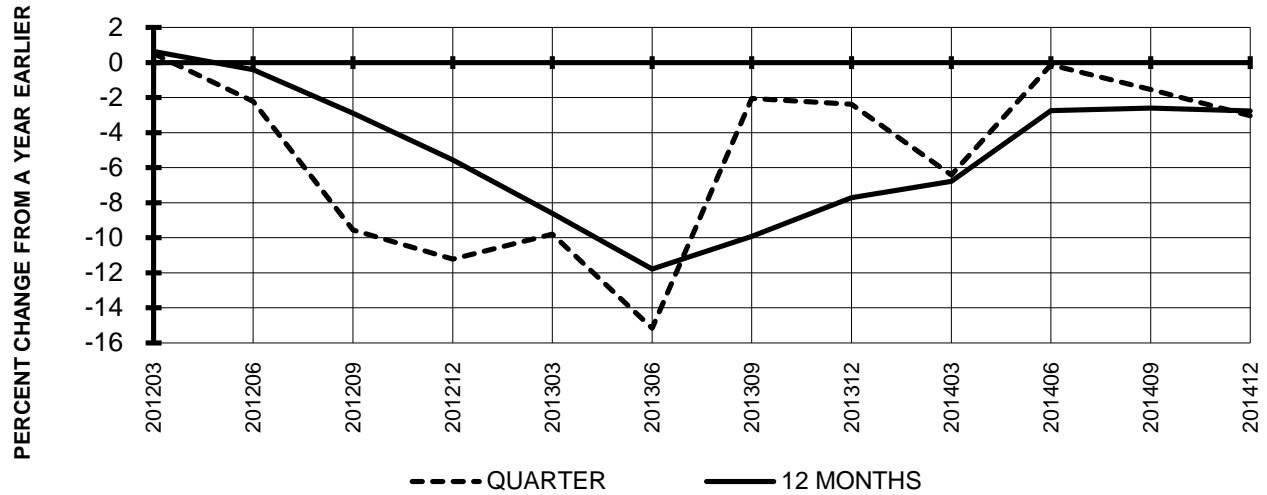


Chart 10.
OPERATING EXPENSE PER AVAILABLE TON-MILE
PERCENT CHANGE FROM SAME PERIOD A YEAR EARLIER

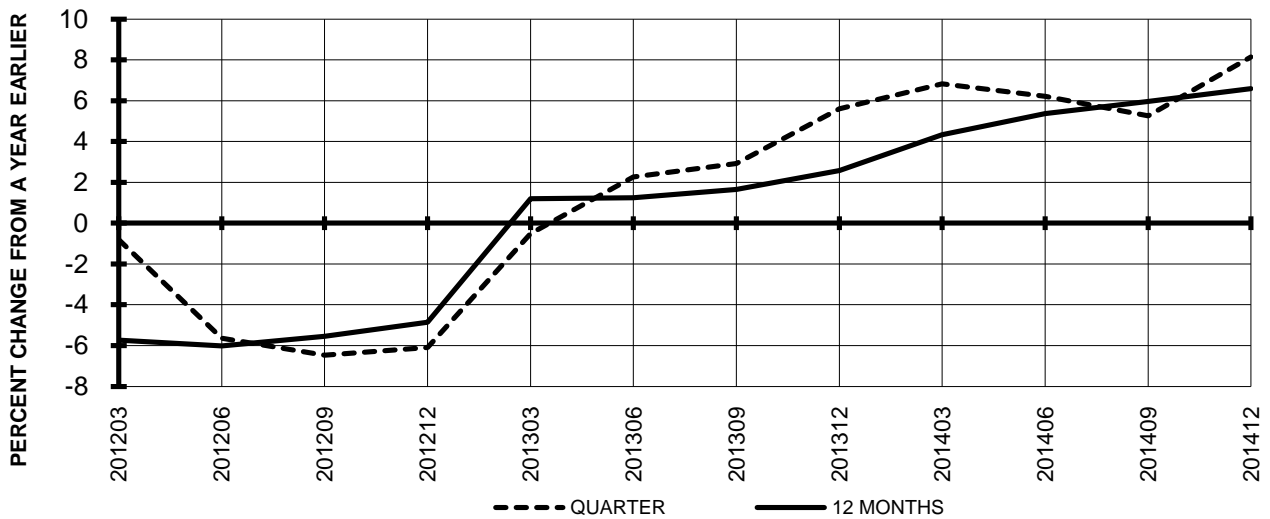


**TOTAL PASSENGER NATIONALS (SYSTEM)
 QUARTERLY AND 12-MONTH BASIS (SCH. SVC.)**

**Chart 11
 PASSENGER REVENUES PER REVENUE PASSENGER-MILE
 PERCENT CHANGE FROM SAME PERIOD A YEAR EARLIER**

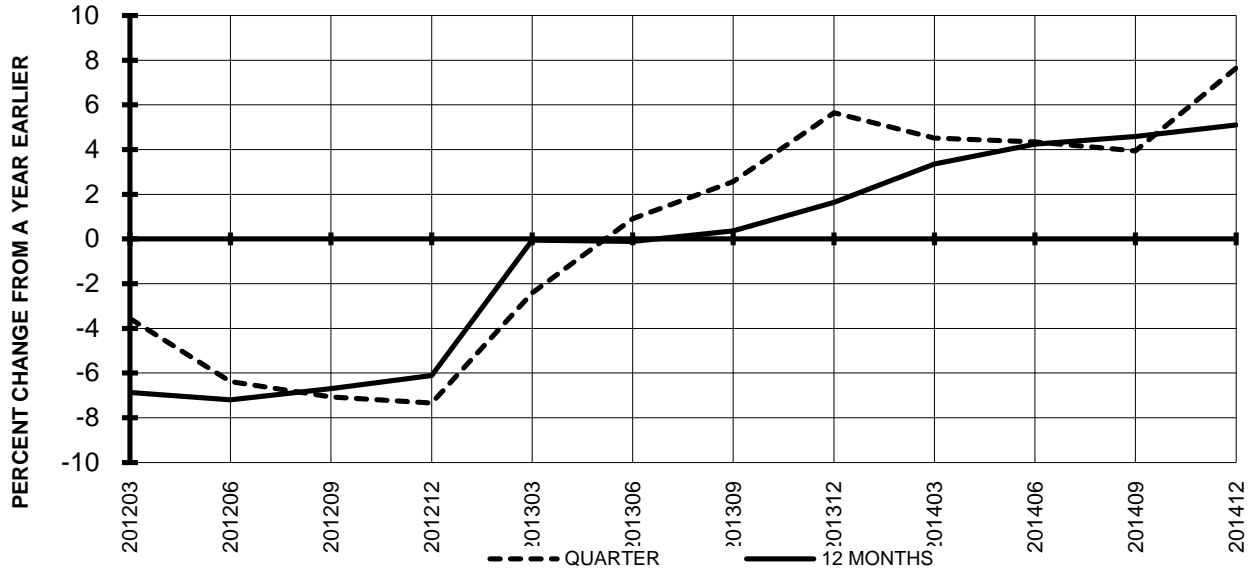


**Chart 12
 REVENUE PASSENGER-MILES
 PERCENT CHANGE FROM SAME PERIOD A EARLIER**

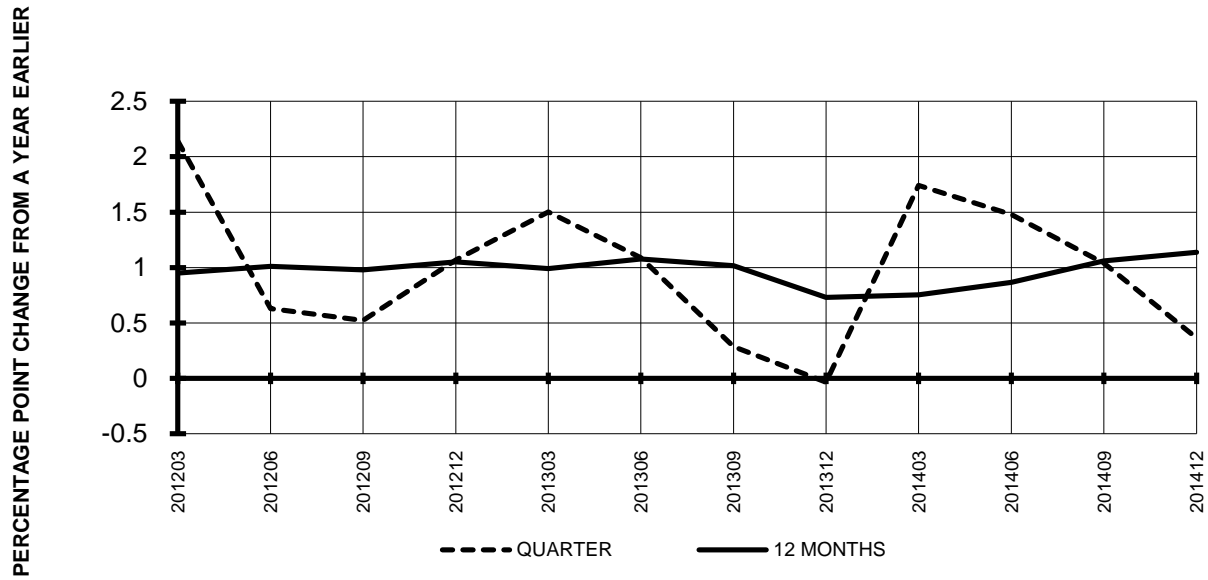


**TOTAL PASSENGER NATIONALS (SYSTEM)
 QUARTERLY AND 12-MONTH BASIS (SCH. SVC.)**

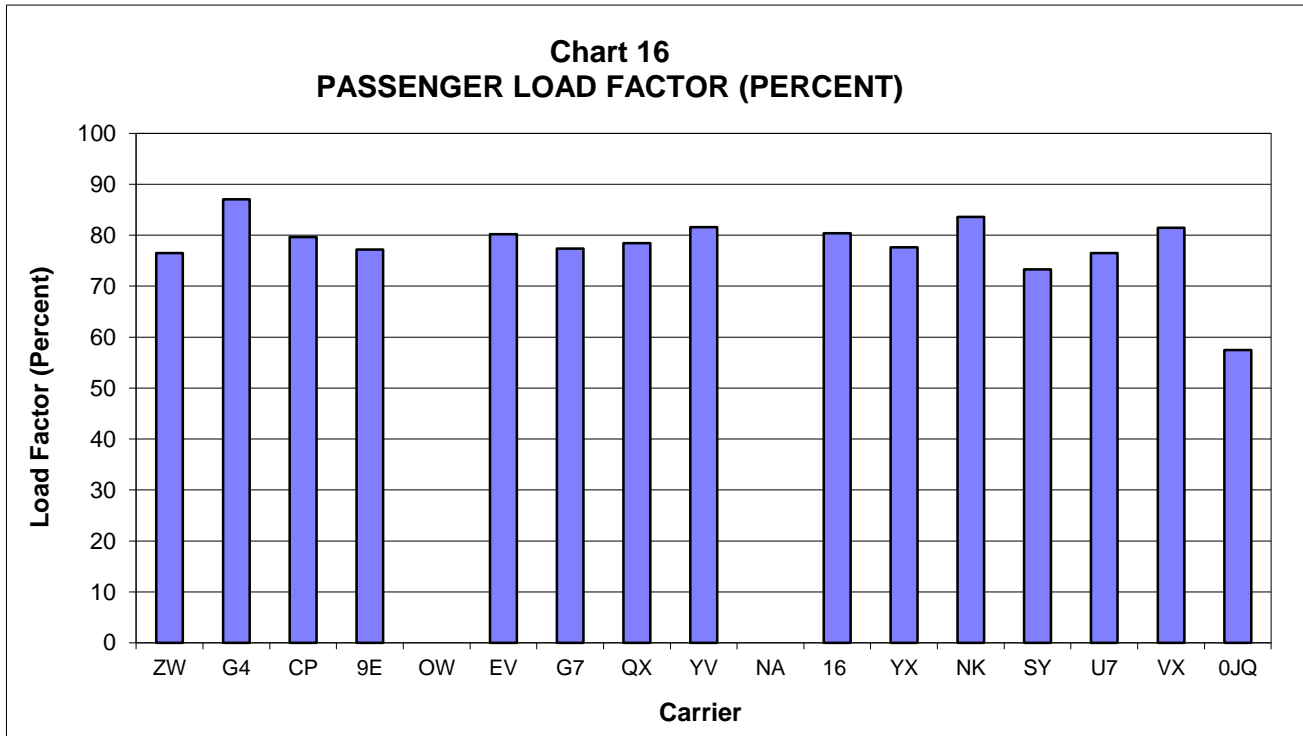
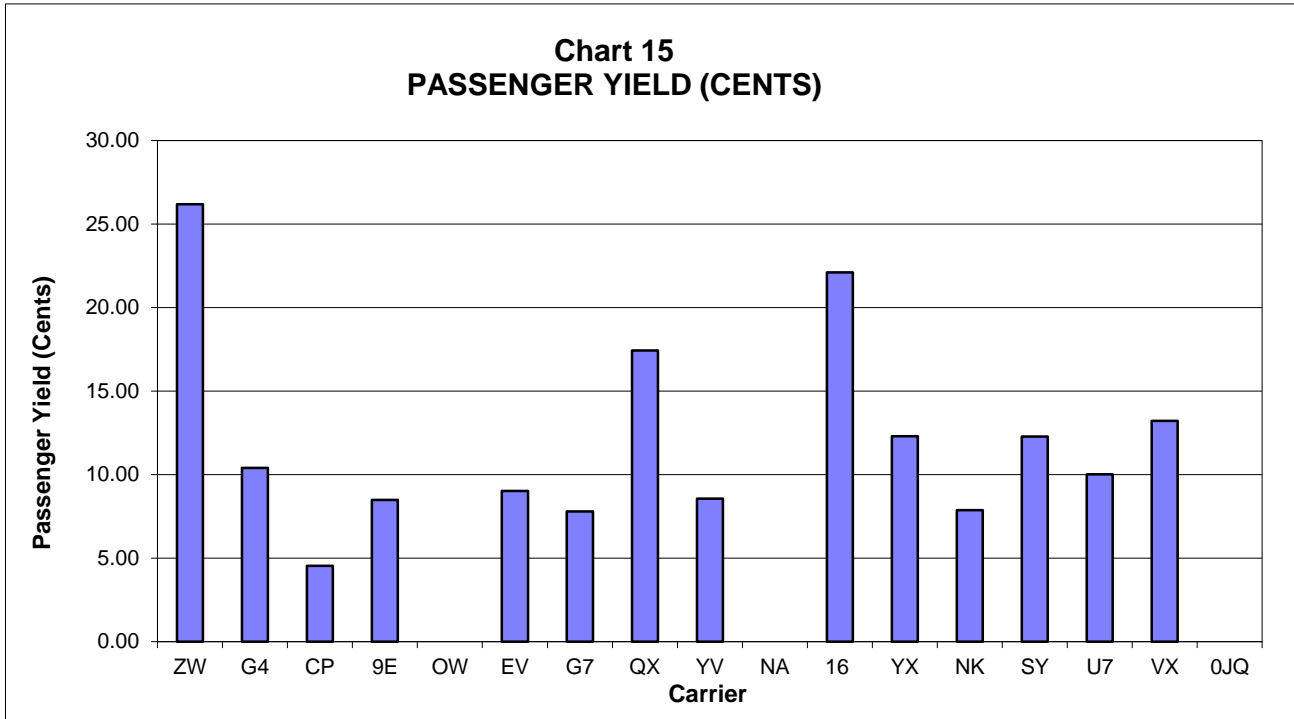
**Chart 13
 AVAILABLE SEAT-MILES
 PERCENT CHANGE FROM SAME PERIOD A YEAR EARLIER**



**Chart 14
 PASSENGER LOAD FACTOR PERCENTAGE
 POINT CHANGE FROM SAME PERIOD A YEAR EARLIER**



**PASSENGER NATIONALS (SYSTEM) 3/
 Quarter Ended December 2014**



3/ See carrier decode page for carrier names

QUARTERLY FINANCIAL & TRAFFIC REVIEW SYSTEM OPERATIONS Air Wisconsin Airlines

ITEMS	QUARTER ENDED		12 MONTHS ENDED				
	2014/12	2013/12	2014/12	2014/09	2014/06	2014/03	2013/12
<u>FINANCIAL RESULTS: (\$Millions)</u>							
1 Operating Revenues	150.6	159.6	644.6	653.5	649.5	646.5	655.6
2 Operating Expenses	144.9	157.1	636.6	648.8	643.4	637.5	639.9
3 Operating Profit (Loss)	5.7	2.5	7.9	4.7	6.1	9.0	15.7
4 Net Income (Loss)	4.2	3.0	6.1	4.9	6.0	8.0	12.6
<u>TRAFFIC: (Thousands)</u>							
5 RPMs - Scheduled Svc.	559.3	517.1	2,242.9	2,200.7	2,164.2	2,127.1	2,141.7
6 ASMs - Scheduled Svc.	731.3	677.6	2,867.9	2,814.2	2,775.4	2,762.3	2,816.5
7 Overall RTMs (All Svc.)	56.0	51.8	224.5	220.4	216.7	213.0	214.5
8 Overall ATMs (All Svc.)	173.3	162.2	679.9	668.8	659.5	656.3	669.6
<u>YIELD & UNIT COST & PROFITS: (Cents)</u>							
9 Operating Revenue per RTM	269.1	308.2	287.1	296.6	299.7	303.5	305.7
10 Operating Expense per RTM	258.9	303.3	283.5	294.4	296.9	299.3	298.4
11 Operating Profit (Loss) per RTM	10.2	4.9	3.5	2.2	2.8	4.2	7.3
12 Operating Expense per ATM	83.6	96.8	93.6	97.0	97.6	97.1	95.6
13 Passenger Revenue per RPM	26.18	28.99	27.16	27.84	28.12	28.45	28.64
<u>FINANCIAL RATIOS:</u>							
14 Operating Revenues to Total Investment	*	*	1.91	1.90	1.86	1.81	1.81
15 Times Interest Earned	*	*	1.79	1.54	1.66	1.88	2.40
16 Current Assets to Current Liabilities	*	*	0.19	0.20	0.20	0.27	0.20
17 No. of Days Cash Coverage of Cash Exp.	*	*	1.2	1.2	1.2	5.4	1.2
<u>FINANCIAL PERCENTAGES:</u>							
18 Operating Profit (Loss) to Operating Revenue	3.8	1.6	1.2	0.7	0.9	1.4	2.4
19 Net Income to Stockholders Equity	*	*	14.6	12.4	16.0	22.8	38.4
20 Corporate Return on Investment	*	*	5.5	5.2	5.5	6.1	7.4
21 Debt to Total Investment	*	*	85.6	87.1	88.1	89.0	88.7
<u>PASSENGER LOAD FACTOR: (Sch. Svc. %)</u>							
22 Actual	76.5	76.3	78.2	78.2	78.0	77.0	76.0
23 Breakeven	75.6	80.1	82.1	83.3	82.9	81.6	79.7
<u>Employment & Productivity:</u>							
24 Employment, Total Weighted Avg CY	1,918	2,464	2,365	2,501	2,503	2,493	2,493
25 Overall RTM's per Employee (000)	29.2	21.0	94.9	88.1	86.6	85.4	86.0

	CHANGE OVER COMPARABLE PERIOD 12 MONTHS EARLIER						
26 Operating Revenues (%)	-5.6	-3.8	-1.7	-1.3	-2.3	-3.3	-1.9
27 Operating Expenses (%)	-7.7	-1.2	-0.5	1.1	-0.6	-2.5	-2.4
28 Operating Profit (Loss) (in Millions \$)	3.2	-4.5	-7.8	-15.4	-11.3	-5.7	2.9
29 Net Income (Loss)(in Millions \$)	1.2	-1.9	-6.5	-9.6	-6.9	-3.8	1.6
30 RPMs (Sch. Svc.) (%)	8.2	-4.9	4.7	1.5	-0.2	-0.9	2.4
31 ASMs (Sch. Svc.) (%)	7.9	-3.9	1.8	-1.1	-3.2	-4.1	-1.0
32 Operating Revenues per RTM (%)	-12.7	1.2	-6.1	-2.7	-2.1	-2.4	-4.2
33 Operating Expense per RTM (%)	-14.6	3.9	-5.0	-0.4	-0.4	-1.6	-4.7
34 Passenger Revenue per RPM (Sch. Svc.)(%)	-9.7	2.9	-5.2	-2.1	-1.3	-1.6	-3.4

QUARTERLY FINANCIAL & TRAFFIC REVIEW SYSTEM OPERATIONS Allegiant Air

ITEMS	QUARTER ENDED		12 MONTHS ENDED					
	2014/12	2013/12	2014/12	2014/09	2014/06	2014/03	2013/12	
<u>FINANCIAL RESULTS: (\$Millions)</u>								
1	Operating Revenues	270.7	231.1	1,099.7	1,060.2	1,023.5	988.0	957.8
2	Operating Expenses	258.6	204.2	961.5	907.0	871.3	850.6	826.2
3	Operating Profit (Loss)	12.0	26.9	138.2	153.1	152.1	137.4	131.6
4	Net Income (Loss)	7.2	26.1	127.9	146.9	148.5	135.1	130.0
<u>TRAFFIC: (Thousands)</u>								
5	RPMs - Scheduled Svc.	1,821.0	1,611.5	7,749.5	7,540.0	7,337.9	7,189.8	7,000.0
6	ASMs - Scheduled Svc.	2,091.6	1,890.7	8,682.0	8,481.2	8,264.5	8,110.9	7,875.6
7	Overall RTMs (All Svc.)	185.6	164.3	785.8	764.4	744.0	729.1	710.8
8	Overall ATMs (All Svc.)	300.0	225.2	1,304.3	1,229.5	1,115.3	986.6	865.8
<u>YIELD & UNIT COST & PROFITS: (Cents)</u>								
9	Operating Revenue per RTM	145.8	140.7	140.0	138.7	137.6	135.5	134.8
10	Operating Expense per RTM	139.3	124.3	122.4	118.7	117.1	116.7	116.2
11	Operating Profit (Loss) per RTM	6.5	16.4	17.6	20.0	20.5	18.8	18.5
12	Operating Expense per ATM	86.2	90.7	73.7	73.8	78.1	86.2	95.4
13	Passenger Revenue per RPM	10.41	10.62	10.34	10.38	10.37	10.21	10.12
<u>FINANCIAL RATIOS:</u>								
14	Operating Revenues to Total Investment	*	*	1.27	1.35	1.47	1.63	1.73
15	Times Interest Earned	*	*	16.33	24.43	39.05	55.28	74.41
16	Current Assets to Current Liabilities	*	*	1.66	1.71	1.84	1.85	1.81
17	No. of Days Cash Coverage of Cash Exp.	*	*	12.9	19.9	15.1	5.5	28.6
<u>FINANCIAL PERCENTAGES:</u>								
18	Operating Profit (Loss) to Operating Revenue	4.4	11.7	12.6	14.4	14.9	13.9	13.7
19	Net Income to Stockholders Equity	*	*	19.8	23.9	25.6	24.9	25.7
20	Corporate Return on Investment	*	*	15.8	19.5	21.8	22.8	23.8
21	Debt to Total Investment	*	*	29.0	30.2	31.8	13.8	15.4
<u>PASSENGER LOAD FACTOR: (Sch. Svc. %)</u>								
22	Actual	87.1	85.2	89.3	88.9	88.8	88.6	88.9
23	Breakeven	96.5	89.8	90.2	88.4	87.9	87.2	85.7
<u>Employment & Productivity:</u>								
24	Employment, Total Weighted Avg CY	2,379	2,041	2,220	2,135	2,076	2,013	1,947
25	Overall RTM's per Employee (000)	78.0	80.5	353.9	358.0	358.4	362.2	365.1

CHANGE OVER COMPARABLE PERIOD 12 MONTHS EARLIER								
26	Operating Revenues (%)	17.1	7.9	14.8	12.7	10.3	9.4	10.2
27	Operating Expenses (%)	26.7	5.5	16.4	11.2	8.3	8.9	8.4
28	Operating Profit (Loss) (in Millions \$)	-14.9	6.2	6.6	27.8	28.9	15.3	24.9
29	Net Income (Loss)(in Millions \$)	-19.0	5.7	-2.1	22.5	26.4	14.2	24.4
30	RPMs (Sch. Svc.) (%)	13.0	6.8	10.7	9.3	8.5	11.3	11.9
31	ASMs (Sch. Svc.) (%)	10.6	8.4	10.2	9.7	8.8	12.0	12.6
32	Operating Revenues per RTM (%)	3.6	3.0	3.9	3.7	3.0	0.3	0.7
33	Operating Expense per RTM (%)	12.1	0.8	5.3	2.3	1.1	-0.2	-1.0
34	Passenger Revenue per RPM (Sch. Svc.)(%)	-2.0	5.9	2.2	4.0	4.6	1.0	0.3

QUARTERLY FINANCIAL & TRAFFIC REVIEW SYSTEM OPERATIONS Compass Airlines

ITEMS	QUARTER ENDED		12 MONTHS ENDED					
	2014/12	2013/12	2014/12	2014/09	2014/06	2014/03	2013/12	
<u>FINANCIAL RESULTS: (\$Millions)</u>								
1	Operating Revenues	32.9	35.4	142.6	145.0	144.0	143.2	135.9
2	Operating Expenses	33.3	34.1	136.5	137.3	136.3	134.5	127.7
3	Operating Profit (Loss)	-0.4	1.2	6.1	7.8	7.6	8.7	8.2
4	Net Income (Loss)	-0.4	1.2	8.7	10.4	10.0	8.7	8.3
<u>TRAFFIC: (Thousands)</u>								
5	RPMs - Scheduled Svc.	725.4	702.4	2,931.2	2,908.2	2,878.5	2,874.7	2,831.5
6	ASMs - Scheduled Svc.	911.3	905.9	3,619.2	3,613.9	3,641.2	3,684.2	3,684.6
7	Overall RTMs (All Svc.)	72.5	70.2	293.1	290.8	287.9	287.5	283.2
8	Overall ATMs (All Svc.)	119.9	119.2	476.0	475.3	478.9	484.5	484.4
<u>YIELD & UNIT COST & PROFITS: (Cents)</u>								
9	Operating Revenue per RTM	45.4	50.3	48.7	49.9	50.0	49.8	48.0
10	Operating Expense per RTM	45.9	48.6	46.6	47.2	47.4	46.8	45.1
11	Operating Profit (Loss) per RTM	-0.5	1.8	2.1	2.7	2.7	3.0	2.9
12	Operating Expense per ATM	27.8	28.6	28.7	28.9	28.5	27.8	26.4
13	Passenger Revenue per RPM	4.54	5.03	4.87	4.99	5.00	4.98	4.80
<u>FINANCIAL RATIOS:</u>								
14	Operating Revenues to Total Investment	*	*	4.25	4.60	4.64	4.61	4.32
15	Times Interest Earned	*	*	0.00	0.00	0.00	0.00	0.00
16	Current Assets to Current Liabilities	*	*	3.00	2.70	2.27	2.48	2.33
17	No. of Days Cash Coverage of Cash Exp.	*	*	61.1	57.1	52.0	51.4	44.4
<u>FINANCIAL PERCENTAGES:</u>								
18	Operating Profit (Loss) to Operating Revenue	-1.2	3.5	4.3	5.4	5.3	6.1	6.1
19	Net Income to Stockholders Equity	*	*	26.1	32.8	32.4	28.1	26.3
20	Corporate Return on Investment	*	*	26.1	32.8	32.4	28.1	26.3
21	Debt to Total Investment	*	*	0.0	0.0	0.0	0.0	0.0
<u>PASSENGER LOAD FACTOR: (Sch. Svc. %)</u>								
22	Actual	79.6	77.5	81.0	80.5	79.1	78.0	76.8
23	Breakeven	80.6	74.7	77.1	75.7	74.4	72.8	71.7
<u>Employment & Productivity:</u>								
24	Employment, Total Weighted Avg CY	1,280	1,191	1,223	1,201	1,173	1,144	1,116
25	Overall RTM's per Employee (000)	56.7	59.0	239.7	242.2	245.4	251.3	253.7

CHANGE OVER COMPARABLE PERIOD 12 MONTHS EARLIER								
26	Operating Revenues (%)	-6.8	4.8	4.9	8.0	10.0	9.6	-2.2
27	Operating Expenses (%)	-2.3	6.9	6.9	9.4	9.7	8.9	-2.6
28	Operating Profit (Loss) (in Millions \$)	-1.6	-0.6	-2.1	-1.1	1.0	1.5	0.3
29	Net Income (Loss)(in Millions \$)	-1.6	-0.6	0.5	1.5	3.5	1.6	0.4
30	RPMs (Sch. Svc.) (%)	3.3	-0.9	3.5	2.5	0.8	-0.5	-4.3
31	ASMs (Sch. Svc.) (%)	0.6	-0.3	-1.8	-2.0	-1.0	0.6	-0.5
32	Operating Revenues per RTM (%)	-9.8	5.8	1.4	5.4	9.1	10.1	2.2
33	Operating Expense per RTM (%)	-5.4	7.9	3.3	6.8	8.9	9.5	1.9
34	Passenger Revenue per RPM (Sch. Svc.)(%)	-9.8	5.8	1.3	5.4	9.2	10.2	2.3

6/ Colgan, formerly a Pinnacle Airlines subsidiary, was phased out and ceased operations on September 5, 2012.

QUARTERLY FINANCIAL & TRAFFIC REVIEW SYSTEM OPERATIONS Endeavor Air

ITEMS	QUARTER ENDED		12 MONTHS ENDED				
	2014/12	2013/12	2014/12	2014/09	2014/06	2014/03	2013/12
<u>FINANCIAL RESULTS: (\$Millions)</u>							
1 Operating Revenues	127.7	145.3	533.5	551.0	579.0	549.8	585.2
2 Operating Expenses	138.1	149.1	548.9	559.9	585.4	552.7	591.9
3 Operating Profit (Loss)	-10.4	-3.9	-15.4	-8.9	-6.5	-2.9	-6.6
4 Net Income (Loss)	-11.8	-5.4	-23.1	-16.6	-13.2	-9.8	-20.9
<u>TRAFFIC: (Thousands)</u>							
5 RPMs - Scheduled Svc.	1,505.9	1,424.9	6,014.9	5,934.0	5,929.0	5,921.0	6,010.2
6 ASMs - Scheduled Svc.	1,951.0	1,864.3	7,626.2	7,539.4	7,564.6	7,605.5	7,767.6
7 Overall RTMs (All Svc.)	150.6	142.6	602.2	594.2	593.7	592.9	601.5
8 Overall ATMs (All Svc.)	268.2	247.6	1,036.8	1,016.2	1,010.3	1,009.2	1,027.9
<u>YIELD & UNIT COST & PROFITS: (Cents)</u>							
9 Operating Revenue per RTM	84.8	101.8	88.6	92.7	97.5	92.7	97.3
10 Operating Expense per RTM	91.7	104.5	91.2	94.2	98.6	93.2	98.4
11 Operating Profit (Loss) per RTM	-6.9	-2.7	-2.6	-1.5	-1.1	-0.5	-1.1
12 Operating Expense per ATM	51.5	60.2	52.9	55.1	57.9	54.8	57.6
13 Passenger Revenue per RPM	8.48	10.19	8.87	9.28	9.76	9.28	9.74
<u>FINANCIAL RATIOS:</u>							
14 Operating Revenues to Total Investment	*	*	7.63	7.32	7.57	13.67	140.11
15 Times Interest Earned	*	*	-2.42	-1.40	-1.24	-0.63	-0.87
16 Current Assets to Current Liabilities	*	*	0.94	0.96	1.02	1.10	1.05
17 No. of Days Cash Coverage of Cash Exp.	*	*	17.2	16.6	19.1	3.2	9.2
<u>FINANCIAL PERCENTAGES:</u>							
18 Operating Profit (Loss) to Operating Revenue	-8.1	-2.7	-2.9	-1.6	-1.1	-0.5	-1.1
19 Net Income to Stockholders Equity	*	*	-89.7	-53.5	-48.3		
20 Corporate Return on Investment	*	*	-23.4	-12.9	-9.5	-9.4	-234.6
21 Debt to Total Investment	*	*	82.1	66.1	62.2	57.0	55.0
<u>PASSENGER LOAD FACTOR: (Sch. Svc. %)</u>							
22 Actual	77.2	76.4	78.9	78.7	78.4	77.9	77.4
23 Breakeven	83.8	78.6	81.4	80.1	79.4	78.3	78.3
<u>Employment & Productivity:</u>							
24 Employment, Total Weighted Avg CY	3,535	3,986	3,744	3,857	3,941	4,060	4,240
25 Overall RTM's per Employee (000)	42.6	35.8	160.8	154.1	150.7	146.0	141.9

CHANGE OVER COMPARABLE PERIOD 12 MONTHS EARLIER							
26 Operating Revenues (%)	-12.1	-16.9	-8.8	-10.4	-10.6	-25.8	-25.1
27 Operating Expenses (%)	-7.4	-19.6	-7.3	-10.9	-11.4	-25.8	-25.0
28 Operating Profit (Loss) (in Millions \$)	-6.5	6.7	-8.8	4.4	6.6	1.6	0.3
29 Net Income (Loss)(in Millions \$)	-6.4	9.4	-2.2	13.7	92.3	90.7	76.0
30 RPMs (Sch. Svc.) (%)	5.7	-11.7	0.1	-4.3	-8.4	-12.9	-13.8
31 ASMs (Sch. Svc.) (%)	4.7	-8.5	-1.8	-5.1	-8.4	-11.6	-12.1
32 Operating Revenues per RTM (%)	-16.7	-6.0	-8.9	-6.4	-2.5	-14.8	-13.2
33 Operating Expense per RTM (%)	-12.3	-9.0	-7.4	-6.9	-3.3	-14.9	-13.0
34 Passenger Revenue per RPM (Sch. Svc.)(%)	-16.8	-5.9	-8.9	-6.4	-2.4	-14.7	-13.2

4/ Comair ceased operations on September 29, 2012.

QUARTERLY FINANCIAL & TRAFFIC REVIEW SYSTEM OPERATIONS Executive Airlines 5/

ITEMS	QUARTER ENDED		12 MONTHS ENDED				
	2014/12	2013/12	2014/12	2014/09	2014/06	2014/03	2013/12
<u>FINANCIAL RESULTS: (\$Millions)</u>							
1 Operating Revenues	0.0	0.0	0.0	0.0	0.0	0.0	12.0
2 Operating Expenses	0.0	0.0	0.0	0.0	0.0	0.0	13.9
3 Operating Profit (Loss)	0.0	0.0	0.0	0.0	0.0	0.0	-1.9
4 Net Income (Loss)	0.0	0.0	0.0	0.0	0.0	0.0	-0.7
<u>TRAFFIC: (Thousands)</u>							
5 RPMs - Scheduled Svc.	0.0	0.0	0.0	0.0	0.0	0.0	22.0
6 ASMs - Scheduled Svc.	0.0	0.0	0.0	0.0	0.0	0.0	40.3
7 Overall RTMs (All Svc.)	0.0	0.0	0.0	0.0	0.0	0.0	2.2
8 Overall ATMs (All Svc.)	0.0	0.0	0.0	0.0	0.0	0.0	4.6
<u>YIELD & UNIT COST & PROFITS: (Cents)</u>							
9 Operating Revenue per RTM	0.0	0.0	0.0	0.0	0.0	0.0	545.3
10 Operating Expense per RTM	0.0	0.0	0.0	0.0	0.0	0.0	630.8
11 Operating Profit (Loss) per RTM	0.0	0.0	0.0	0.0	0.0	0.0	-85.5
12 Operating Expense per ATM	0.0	0.0	0.0	0.0	0.0	0.0	299.4
13 Passenger Revenue per RPM	0.00	0.00	0.00	0.00	0.00	0.00	48.69
<u>FINANCIAL RATIOS:</u>							
14 Operating Revenues to Total Investment	*	*				999.90	999.90
15 Times Interest Earned	*	*					-34.07
16 Current Assets to Current Liabilities	*	*	0.00	0.00	0.00	0.00	0.00
17 No. of Days Cash Coverage of Cash Exp.	*	*					0.0
<u>FINANCIAL PERCENTAGES:</u>							
18 Operating Profit (Loss) to Operating Revenue	0.0	0.0	0.0	0.0	0.0	0.0	-15.7
19 Net Income to Stockholders Equity	*	*					
20 Corporate Return on Investment	*	*	0.0	0.0	0.0	0.0	0.0
21 Debt to Total Investment	*	*	0.0	0.0	0.0	0.0	0.0
<u>PASSENGER LOAD FACTOR: (Sch. Svc. %)</u>							
22 Actual	0.0	0.0	0.0	0.0	0.0	0.0	54.6
23 Breakeven	0.0	0.0	0.0	0.0	0.0	0.0	65.3
<u>Employment & Productivity:</u>							
24 Employment, Total Weighted Avg CY	0	0	0	0	0	0	187
25 Overall RTM's per Employee (000)	0.0	0.0	0.0	0.0	0.0	0.0	11.8

ITEMS	CHANGE OVER COMPARABLE PERIOD 12 MONTHS EARLIER						
	2014/12	2013/12	2014/12	2014/09	2014/06	2014/03	2013/12
26 Operating Revenues (%)	0.0	0.0	0.0	0.0	0.0	0.0	-91.9
27 Operating Expenses (%)	0.0	0.0	0.0	0.0	0.0	0.0	-90.9
28 Operating Profit (Loss) (in Millions \$)	0.0	0.0	0.0	0.0	0.0	0.0	2.6
29 Net Income (Loss)(in Millions \$)	0.0	0.0	0.0	0.0	0.0	0.0	8.7
30 RPMs (Sch. Svc.) (%)	0.0	0.0	0.0	0.0	0.0	0.0	-90.4
31 ASMs (Sch. Svc.) (%)	0.0	0.0	0.0	0.0	0.0	0.0	-89.0
32 Operating Revenues per RTM (%)	0.0	0.0	0.0	0.0	0.0	0.0	-14.2
33 Operating Expense per RTM (%)	0.0	0.0	0.0	0.0	0.0	0.0	-3.7
34 Passenger Revenue per RPM (Sch. Svc.)(%)	0.0	0.0	0.0	0.0	0.0	0.0	-20.0

QUARTERLY FINANCIAL & TRAFFIC REVIEW SYSTEM OPERATIONS ExpressJet Airlines

ITEMS	QUARTER ENDED		12 MONTHS ENDED					
	2014/12	2013/12	2014/12	2014/09	2014/06	2014/03	2013/12	
<u>FINANCIAL RESULTS: (\$Millions)</u>								
1	Operating Revenues	340.8	357.3	1,347.3	1,363.7	1,404.9	1,439.7	1,466.3
2	Operating Expenses	356.1	365.5	1,446.3	1,455.7	1,489.7	1,496.9	1,494.3
3	Operating Profit (Loss)	-15.3	-8.3	-99.0	-92.0	-84.8	-57.2	-28.0
4	Net Income (Loss)	-17.9	-8.8	-84.0	-74.9	-74.6	-46.4	-32.3
<u>TRAFFIC: (Thousands)</u>								
5	RPMs - Scheduled Svc.	3,768.1	4,254.5	15,915.7	16,402.1	16,659.2	16,830.4	16,852.2
6	ASMs - Scheduled Svc.	4,698.6	5,281.6	19,599.5	20,182.5	20,612.0	20,962.1	21,146.7
7	Overall RTMs (All Svc.)	376.8	425.5	1,591.6	1,640.2	1,665.9	1,683.1	1,685.2
8	Overall ATMs (All Svc.)	518.3	584.5	2,165.8	2,232.1	2,283.3	2,324.5	2,346.9
<u>YIELD & UNIT COST & PROFITS: (Cents)</u>								
9	Operating Revenue per RTM	90.5	84.0	84.6	83.1	84.3	85.5	87.0
10	Operating Expense per RTM	94.5	85.9	90.9	88.8	89.4	88.9	88.7
11	Operating Profit (Loss) per RTM	-4.1	-1.9	-6.2	-5.6	-5.1	-3.4	-1.7
12	Operating Expense per ATM	68.7	62.5	66.8	65.2	65.2	64.4	63.7
13	Passenger Revenue per RPM	9.01	8.40	8.45	8.31	8.43	8.55	8.70
<u>FINANCIAL RATIOS:</u>								
14	Operating Revenues to Total Investment	*	*	1.11	1.11	1.11	1.11	1.09
15	Times Interest Earned	*	*	-5.41	-4.91	-4.41	-2.82	-1.32
16	Current Assets to Current Liabilities	*	*	1.22	1.75	1.79	2.10	2.10
17	No. of Days Cash Coverage of Cash Exp.	*	*	12.9	75.8	6.5	29.3	29.3
<u>FINANCIAL PERCENTAGES:</u>								
18	Operating Profit (Loss) to Operating Revenue	-4.5	-2.3	-7.3	-6.7	-6.0	-4.0	-1.9
19	Net Income to Stockholders Equity	*	*	-13.4	-12.1	-11.8	-7.2	-4.7
20	Corporate Return on Investment	*	*	-5.4	-4.5	-4.3	-2.0	-0.8
21	Debt to Total Investment	*	*	45.2	45.9	46.4	51.6	51.6
<u>PASSENGER LOAD FACTOR: (Sch. Svc. %)</u>								
22	Actual	80.2	80.6	81.2	81.3	80.8	80.3	79.7
23	Breakeven	84.3	82.5	88.0	87.4	86.3	83.9	81.4
<u>Employment & Productivity:</u>								
24	Employment, Total Weighted Avg CY	8,805	9,075	9,132	9,199	9,158	9,054	8,961
25	Overall RTM's per Employee (000)	42.8	46.9	174.3	178.3	181.9	185.9	188.1

CHANGE OVER COMPARABLE PERIOD 12 MONTHS EARLIER								
26	Operating Revenues (%)	-4.6	-0.1	-8.1	-7.0	-4.5	-5.4	-8.0
27	Operating Expenses (%)	-2.6	2.2	-3.2	-2.1	0.2	-2.4	-5.9
28	Operating Profit (Loss) (in Millions \$)	-7.0	-8.2	-71.0	-72.3	-70.2	-45.3	-33.1
29	Net Income (Loss)(in Millions \$)	-9.1	-5.3	-51.7	-48.0	-52.6	-25.2	-21.8
30	RPMs (Sch. Svc.) (%)	-11.4	8.0	-5.6	-0.8	2.5	5.7	6.2
31	ASMs (Sch. Svc.) (%)	-11.0	6.7	-7.3	-3.0	0.7	4.4	5.6
32	Operating Revenues per RTM (%)	7.7	-7.5	-2.7	-6.3	-6.9	-10.5	-13.3
33	Operating Expense per RTM (%)	10.0	-5.4	2.5	-1.3	-2.2	-7.6	-11.4
34	Passenger Revenue per RPM (Sch. Svc.)(%)	7.3	-7.3	-2.8	-6.2	-6.6	-10.0	-12.7

QUARTERLY FINANCIAL & TRAFFIC REVIEW SYSTEM OPERATIONS

GoJet Airlines d/b/a United Express 7/

ITEMS	QUARTER ENDED		12 MONTHS ENDED					
	2014/12	2013/12	2014/12	2014/09	2014/06	2014/03	2013/12	
<u>FINANCIAL RESULTS: (\$Millions)</u>								
1	Operating Revenues	48.2	47.9	194.3	194.1	193.9	196.0	202.4
2	Operating Expenses	44.8	43.9	183.1	182.1	183.2	180.6	181.7
3	Operating Profit (Loss)	3.4	4.1	11.3	11.9	10.7	15.4	20.7
4	Net Income (Loss)	0.7	1.2	0.2	0.7	-0.7	3.8	8.8
<u>TRAFFIC: (Thousands)</u>								
5	RPMs - Scheduled Svc.	619.1	597.7	2,566.2	2,544.8	2,519.7	2,496.5	2,527.7
6	ASMs - Scheduled Svc.	799.9	745.0	3,239.9	3,185.1	3,135.3	3,109.2	3,158.7
7	Overall RTMs (All Svc.)	61.9	59.8	256.6	254.5	252.0	249.7	252.8
8	Overall ATMs (All Svc.)	100.6	99.4	409.3	408.1	408.1	410.9	421.4
<u>YIELD & UNIT COST & PROFITS: (Cents)</u>								
9	Operating Revenue per RTM	77.9	80.2	75.7	76.3	77.0	78.5	80.1
10	Operating Expense per RTM	72.4	73.4	71.3	71.6	72.7	72.3	71.9
11	Operating Profit (Loss) per RTM	5.5	6.8	4.4	4.7	4.3	6.2	8.2
12	Operating Expense per ATM	44.5	44.1	44.7	44.6	44.9	43.9	43.1
13	Passenger Revenue per RPM	7.79	8.02	7.57	7.63	7.70	7.85	8.01
<u>FINANCIAL RATIOS:</u>								
14	Operating Revenues to Total Investment	*	*	0.78	0.77	0.75	0.75	0.76
15	Times Interest Earned	*	*	1.02	1.06	0.93	1.32	1.75
16	Current Assets to Current Liabilities	*	*	0.68	0.69	0.66	0.70	0.75
17	No. of Days Cash Coverage of Cash Exp.	*	*	25.2	34.0	32.3	36.6	36.6
<u>FINANCIAL PERCENTAGES:</u>								
18	Operating Profit (Loss) to Operating Revenue	7.1	8.5	5.8	6.1	5.5	7.9	10.2
19	Net Income to Stockholders Equity	*	*	0.6	1.8	-1.8	8.6	19.8
20	Corporate Return on Investment	*	*	4.5	4.7	4.2	5.9	7.7
21	Debt to Total Investment	*	*	83.2	83.7	84.3	84.3	84.2
<u>PASSENGER LOAD FACTOR: (Sch. Svc. %)</u>								
22	Actual	77.4	80.2	79.2	79.9	80.4	80.3	80.0
23	Breakeven	71.6	73.0	74.1	74.4	75.4	73.3	70.9
<u>Employment & Productivity:</u>								
24	Employment, Total Weighted Avg CY	1,184	1,183	1,129	1,128	1,124	1,119	1,100
25	Overall RTM's per Employee (000)	52.3	50.5	227.3	225.6	224.2	223.1	229.8

CHANGE OVER COMPARABLE PERIOD 12 MONTHS EARLIER								
26	Operating Revenues (%)	0.6	-6.2	-4.0	-5.6	-4.1	-3.7	2.3
27	Operating Expenses (%)	2.1	-3.6	0.8	-0.7	1.2	-2.6	-2.1
28	Operating Profit (Loss) (in Millions \$)	-0.7	-1.5	-9.5	-10.3	-10.6	-2.8	8.5
29	Net Income (Loss)(in Millions \$)	-0.5	-1.2	-8.6	-9.3	-9.5	-1.5	9.8
30	RPMs (Sch. Svc.) (%)	3.6	-3.5	1.5	-0.2	1.9	6.7	17.8
31	ASMs (Sch. Svc.) (%)	7.4	-4.3	2.6	-0.2	1.7	7.1	20.6
32	Operating Revenues per RTM (%)	-2.9	-2.8	-5.4	-5.4	-6.0	-9.7	-13.2
33	Operating Expense per RTM (%)	-1.4	-0.2	-0.8	-0.5	-0.7	-8.6	-16.9
34	Passenger Revenue per RPM (Sch. Svc.)(%)	-2.9	-2.8	-5.4	-5.4	-5.9	-9.7	-13.2

7/ Executive ceased all scheduled service April 1 2013

QUARTERLY FINANCIAL & TRAFFIC REVIEW SYSTEM OPERATIONS Horizon Air

ITEMS	QUARTER ENDED		12 MONTHS ENDED					
	2014/12	2013/12	2014/12	2014/09	2014/06	2014/03	2013/12	
<u>FINANCIAL RESULTS: (\$Millions)</u>								
1	Operating Revenues	96.1	94.3	376.4	374.6	364.9	368.5	372.9
2	Operating Expenses	89.5	87.3	351.7	349.4	341.0	336.4	337.9
3	Operating Profit (Loss)	6.5	7.1	24.7	25.2	23.9	32.1	35.0
4	Net Income (Loss)	0.6	2.2	9.3	10.9	7.8	11.8	12.7
<u>TRAFFIC: (Thousands)</u>								
5	RPMs - Scheduled Svc.	545.2	534.5	2,208.1	2,197.4	2,174.5	2,172.4	2,164.2
6	ASMs - Scheduled Svc.	695.2	669.9	2,782.1	2,756.8	2,709.9	2,699.1	2,679.4
7	Overall RTMs (All Svc.)	54.8	53.7	221.8	220.7	218.4	218.2	217.3
8	Overall ATMs (All Svc.)	81.4	78.4	325.8	322.8	317.4	316.1	313.8
<u>YIELD & UNIT COST & PROFITS: (Cents)</u>								
9	Operating Revenue per RTM	175.5	175.8	169.7	169.8	167.1	168.9	171.6
10	Operating Expense per RTM	163.5	162.6	158.6	158.3	156.2	154.2	155.5
11	Operating Profit (Loss) per RTM	11.9	13.2	11.1	11.4	10.9	14.7	16.1
12	Operating Expense per ATM	110.0	111.2	107.9	108.2	107.5	106.4	107.7
13	Passenger Revenue per RPM	17.42	17.41	16.83	16.83	16.55	16.73	16.99
<u>FINANCIAL RATIOS:</u>								
14	Operating Revenues to Total Investment	*	*	0.83	0.84	0.82	0.84	0.84
15	Times Interest Earned	*	*	2.44	2.45	2.03	2.51	2.61
16	Current Assets to Current Liabilities	*	*	0.93	0.86	0.84	0.72	0.76
17	No. of Days Cash Coverage of Cash Exp.	*	*	0.2	0.1	0.1	0.1	0.2
<u>FINANCIAL PERCENTAGES:</u>								
18	Operating Profit (Loss) to Operating Revenue	6.8	7.5	6.6	6.7	6.6	8.7	9.4
19	Net Income to Stockholders Equity	*	*	5.9	7.0	5.1	7.8	8.7
20	Corporate Return on Investment	*	*	4.7	5.2	4.6	5.5	5.7
21	Debt to Total Investment	*	*	64.4	64.9	67.0	63.3	64.9
<u>PASSENGER LOAD FACTOR: (Sch. Svc. %)</u>								
22	Actual	78.4	79.8	79.4	79.7	80.2	80.5	80.8
23	Breakeven	72.7	73.4	73.5	73.7	74.3	72.6	72.2
<u>Employment & Productivity:</u>								
24	Employment, Total Weighted Avg CY	2,861	2,724	2,823	2,789	2,751	2,712	2,682
25	Overall RTM's per Employee (000)	19.1	19.7	78.6	79.1	79.4	80.4	81.0

CHANGE OVER COMPARABLE PERIOD 12 MONTHS EARLIER								
26	Operating Revenues (%)	1.9	-4.6	0.9	-0.8	-5.4	-4.0	-1.0
27	Operating Expenses (%)	2.6	-3.1	4.1	2.6	-1.5	-2.5	0.3
28	Operating Profit (Loss) (in Millions \$)	-0.5	-1.7	-10.4	-11.6	-15.6	-6.8	-4.9
29	Net Income (Loss)(in Millions \$)	-1.6	-1.0	-3.4	-2.7	-6.6	-1.3	-2.2
30	RPMs (Sch. Svc.) (%)	2.0	0.7	2.0	1.7	1.2	2.5	3.5
31	ASMs (Sch. Svc.) (%)	3.8	-0.4	3.8	2.8	0.7	0.5	0.4
32	Operating Revenues per RTM (%)	-0.2	-5.2	-1.1	-2.4	-6.5	-6.3	-4.3
33	Operating Expense per RTM (%)	0.6	-3.8	2.0	0.8	-2.6	-4.8	-3.1
34	Passenger Revenue per RPM (Sch. Svc.)(%)	0.1	-4.9	-0.9	-2.2	-6.2	-5.9	-3.9

QUARTERLY FINANCIAL & TRAFFIC REVIEW SYSTEM OPERATIONS Mesa Airlines

ITEMS	QUARTER ENDED		12 MONTHS ENDED					
	2014/12	2013/12	2014/12	2014/09	2014/06	2014/03	2013/12	
<u>FINANCIAL RESULTS: (\$Millions)</u>								
1	Operating Revenues	125.5	110.1	458.4	443.0	438.9	440.9	431.5
2	Operating Expenses	102.6	98.8	398.9	395.0	396.5	399.6	388.7
3	Operating Profit (Loss)	22.9	11.4	59.5	48.0	42.4	41.3	42.8
4	Net Income (Loss)	18.6	9.6	45.9	36.9	37.5	37.2	38.4
<u>TRAFFIC: (Thousands)</u>								
5	RPMs - Scheduled Svc.	1,443.9	971.7	4,617.5	4,145.3	4,212.1	4,141.3	4,019.6
6	ASMs - Scheduled Svc.	1,770.3	1,171.4	5,597.7	4,998.8	5,054.3	4,988.6	4,860.6
7	Overall RTMs (All Svc.)	144.4	97.2	462.0	414.7	421.4	414.3	402.1
8	Overall ATMs (All Svc.)	227.3	154.6	721.2	648.5	652.7	643.4	628.8
<u>YIELD & UNIT COST & PROFITS: (Cents)</u>								
9	Operating Revenue per RTM	86.9	113.3	99.2	106.8	104.1	106.4	107.3
10	Operating Expense per RTM	71.1	101.6	86.4	95.3	94.1	96.4	96.6
11	Operating Profit (Loss) per RTM	15.9	11.7	12.9	11.6	10.1	10.0	10.7
12	Operating Expense per ATM	45.1	63.9	55.3	60.9	60.7	62.1	61.8
13	Passenger Revenue per RPM	8.57	11.03	9.75	10.46	10.16	10.36	10.45
<u>FINANCIAL RATIOS:</u>								
14	Operating Revenues to Total Investment	*	*	1.38	1.43	1.54	1.67	1.48
15	Times Interest Earned	*	*	4.75	4.76	5.35	5.51	5.52
16	Current Assets to Current Liabilities	*	*	5.23	4.84	0.00	0.00	0.00
17	No. of Days Cash Coverage of Cash Exp.	*	*	0.1	0.1	0.0	0.3	0.5
<u>FINANCIAL PERCENTAGES:</u>								
18	Operating Profit (Loss) to Operating Revenue	18.2	10.3	13.0	10.8	9.7	9.4	9.9
19	Net Income to Stockholders Equity	*	*			1,607.9	368.7	216.2
20	Corporate Return on Investment	*	*	17.5	15.1	16.0	16.9	15.8
21	Debt to Total Investment	*	*	103.6	105.0	108.0	119.2	86.7
<u>PASSENGER LOAD FACTOR: (Sch. Svc. %)</u>								
22	Actual	81.6	83.0	82.5	82.9	83.3	83.0	82.7
23	Breakeven	65.7	73.7	70.4	72.7	74.2	74.1	73.3
<u>Employment & Productivity:</u>								
24	Employment, Total Weighted Avg CY	2,176	1,781	2,017	1,918	1,823	1,753	1,675
25	Overall RTM's per Employee (000)	66.4	54.6	229.0	216.2	231.2	236.3	240.1

CHANGE OVER COMPARABLE PERIOD 12 MONTHS EARLIER								
26	Operating Revenues (%)	14.0	9.4	6.2	5.0	6.4	-6.8	-21.1
27	Operating Expenses (%)	3.9	14.0	2.6	4.9	8.5	-10.0	-25.2
28	Operating Profit (Loss) (in Millions \$)	11.5	-2.6	16.7	2.6	-4.5	12.0	15.1
29	Net Income (Loss)(in Millions \$)	9.1	-2.4	7.6	-3.9	-1.5	14.9	18.2
30	RPMs (Sch. Svc.) (%)	48.6	11.4	14.9	5.7	16.7	15.5	11.7
31	ASMs (Sch. Svc.) (%)	51.1	13.5	15.2	5.9	17.6	17.1	12.5
32	Operating Revenues per RTM (%)	-23.3	-1.8	-7.5	-0.7	-8.8	-19.3	-29.4
33	Operating Expense per RTM (%)	-30.1	2.3	-10.7	-0.8	-7.1	-22.0	-33.0
34	Passenger Revenue per RPM (Sch. Svc.)(%)	-22.4	-1.3	-6.7	-0.1	-8.6	-19.6	-29.8

QUARTERLY FINANCIAL & TRAFFIC REVIEW SYSTEM OPERATIONS North American Airlines 2/

ITEMS	QUARTER ENDED		12 MONTHS ENDED				
	2014/12	2013/12	2014/12	2014/09	2014/06	2014/03	2013/12
<u>FINANCIAL RESULTS: (\$Millions)</u>							
1 Operating Revenues	0.0	48.8	33.3	82.1	129.4	176.2	189.8
2 Operating Expenses	0.0	46.7	36.4	83.0	125.0	172.2	187.6
3 Operating Profit (Loss)	0.0	2.1	-3.1	-1.0	4.3	4.0	2.3
4 Net Income (Loss)	0.0	-5.5	-34.2	-39.7	-35.9	-60.6	64.1
<u>TRAFFIC: (Thousands)</u>							
5 RPMs - Scheduled Svc.	0.0	0.0	0.0	0.0	0.0	0.0	0.0
6 ASMs - Scheduled Svc.	0.0	0.0	0.0	0.0	0.0	0.0	0.0
7 Overall RTMs (All Svc.)	0.0	14.2	8.4	22.6	38.7	54.9	60.6
8 Overall ATMs (All Svc.)	0.0	31.5	23.8	55.3	88.7	123.8	128.6
<u>YIELD & UNIT COST & PROFITS: (Cents)</u>							
9 Operating Revenue per RTM	0.0	344.2	395.6	363.3	334.5	321.3	313.2
10 Operating Expense per RTM	0.0	329.2	432.4	367.7	323.3	314.0	309.5
11 Operating Profit (Loss) per RTM	0.0	15.0	-36.9	-4.3	11.2	7.3	3.7
12 Operating Expense per ATM	0.0	148.3	152.7	150.2	141.0	139.2	145.9
13 Passenger Revenue per RPM	0.00	0.00	0.00	0.00	0.00	0.00	0.00
<u>FINANCIAL RATIOS:</u>							
14 Operating Revenues to Total Investment	*	*				0.00	0.00
15 Times Interest Earned	*	*	-2.90	-0.35	0.70	0.58	999.90
16 Current Assets to Current Liabilities	*	*	0.00	0.00	0.00	0.00	0.00
17 No. of Days Cash Coverage of Cash Exp.	*	*	0.0	0.0	0.0		
<u>FINANCIAL PERCENTAGES:</u>							
18 Operating Profit (Loss) to Operating Revenue	0.0	4.4	-9.3	-1.2	3.3	2.3	1.2
19 Net Income to Stockholders Equity	*	*					
20 Corporate Return on Investment	*	*	0.0	0.0	0.0	0.0	0.0
21 Debt to Total Investment	*	*	0.0	0.0	0.0		
<u>PASSENGER LOAD FACTOR: (Sch. Svc. %)</u>							
22 Actual	0.0	0.0	0.0	0.0	0.0	0.0	0.0
23 Breakeven	0.0	73.0	0.0	0.0	0.0	73.9	73.0
<u>Employment & Productivity:</u>							
24 Employment, Total Weighted Avg CY	0	346	63	149	241	341	381
25 Overall RTM's per Employee (000)	0.0	41.0	133.5	151.6	160.5	160.9	159.1

CHANGE OVER COMPARABLE PERIOD 12 MONTHS EARLIER							
26 Operating Revenues (%)	0.0	13.6	-82.5	-55.4	-29.8	-7.4	-10.4
27 Operating Expenses (%)	0.0	-2.9	-80.6	-56.1	-36.6	-16.3	-15.6
28 Operating Profit (Loss) (in Millions \$)	0.0	7.2	-5.4	4.0	17.1	19.3	12.8
29 Net Income (Loss)(in Millions \$)	0.0	7.0	-98.3	-96.9	-84.0	-126.3	100.1
30 RPMs (Sch. Svc.) (%)	0.0	0.0	0.0	0.0	0.0	0.0	0.0
31 ASMs (Sch. Svc.) (%)	0.0	0.0	0.0	0.0	0.0	0.0	0.0
32 Operating Revenues per RTM (%)	0.0	-5.2	26.3	15.0	6.3	6.1	21.0
33 Operating Expense per RTM (%)	0.0	-19.0	39.7	13.3	-3.9	-4.0	13.9
34 Passenger Revenue per RPM (Sch. Svc.)(%)	0.0	0.0	0.0	0.0	0.0	0.0	0.0

QUARTERLY FINANCIAL & TRAFFIC REVIEW SYSTEM OPERATIONS PSA Airlines 4/

ITEMS	QUARTER ENDED		12 MONTHS ENDED					
	2014/12	2013/12	2014/12	2014/09	2014/06	2014/03	2013/12	
<u>FINANCIAL RESULTS: (\$Millions)</u>								
1	Operating Revenues	130.1	93.0	363.8	326.6	321.6	326.4	333.9
2	Operating Expenses	116.2	96.6	366.3	346.6	327.4	325.8	327.8
3	Operating Profit (Loss)	13.8	-3.7	-2.5	-20.0	-5.8	0.6	6.1
4	Net Income (Loss)	12.1	-4.2	-6.1	-22.3	-6.9	1.0	7.9
<u>TRAFFIC: (Thousands)</u>								
5	RPMs - Scheduled Svc.	588.4	446.8	1,976.5	1,834.9	1,794.0	1,810.5	1,845.0
6	ASMs - Scheduled Svc.	732.1	581.8	2,452.3	2,302.1	2,291.2	2,342.0	2,407.6
7	Overall RTMs (All Svc.)	58.9	44.8	198.0	183.8	179.7	181.4	184.8
8	Overall ATMs (All Svc.)	95.9	72.9	313.0	290.0	287.3	293.6	301.8
<u>YIELD & UNIT COST & PROFITS: (Cents)</u>								
9	Operating Revenue per RTM	220.9	207.7	183.8	177.7	178.9	180.0	180.7
10	Operating Expense per RTM	197.4	215.9	185.0	188.6	182.2	179.6	177.4
11	Operating Profit (Loss) per RTM	23.5	-8.2	-1.3	-10.9	-3.2	0.3	3.3
12	Operating Expense per ATM	121.2	132.5	117.0	119.5	114.0	111.0	108.6
13	Passenger Revenue per RPM	22.11	20.81	18.41	17.80	17.93	18.03	18.10
<u>FINANCIAL RATIOS:</u>								
14	Operating Revenues to Total Investment	*	*	999.90	999.90	999.90	999.90	999.90
15	Times Interest Earned	*	*	-8.75	-10.12	-6.43	999.90	999.90
16	Current Assets to Current Liabilities	*	*	0.48	0.34	0.33	0.32	0.33
17	No. of Days Cash Coverage of Cash Exp.	*	*	2.0	0.0	0.0	0.1	0.5
<u>FINANCIAL PERCENTAGES:</u>								
18	Operating Profit (Loss) to Operating Revenue	10.6	-3.9	-0.7	-6.1	-1.8	0.2	1.8
19	Net Income to Stockholders Equity	*	*					
20	Corporate Return on Investment	*	*	0.0	0.0	0.0	0.0	0.0
21	Debt to Total Investment	*	*	0.0	0.0	0.0	0.0	0.0
<u>PASSENGER LOAD FACTOR: (Sch. Svc. %)</u>								
22	Actual	80.4	76.8	80.6	79.7	78.3	77.3	76.6
23	Breakeven	71.4	80.0	81.2	85.1	79.9	77.2	75.1
<u>Employment & Productivity:</u>								
24	Employment, Total Weighted Avg CY	1,718	1,106	1,469	1,316	1,198	1,119	1,079
25	Overall RTM's per Employee (000)	34.3	40.5	134.8	139.7	150.0	162.1	171.3

CHANGE OVER COMPARABLE PERIOD 12 MONTHS EARLIER								
26	Operating Revenues (%)	40.0	-2.4	8.9	-2.8	-4.0	-3.1	-1.2
27	Operating Expenses (%)	20.3	26.2	11.7	12.7	7.0	9.0	9.6
28	Operating Profit (Loss) (in Millions \$)	17.5	-22.4	-8.6	-48.5	-34.9	-37.2	-32.7
29	Net Income (Loss)(in Millions \$)	16.2	-22.0	-14.0	-52.2	-37.4	-36.5	-28.0
30	RPMs (Sch. Svc.) (%)	31.7	-10.3	7.1	-3.2	-7.8	-6.3	-2.5
31	ASMs (Sch. Svc.) (%)	25.8	-7.6	1.9	-6.2	-8.3	-6.3	-2.4
32	Operating Revenues per RTM (%)	6.4	8.8	1.7	0.4	4.1	3.5	1.4
33	Operating Expense per RTM (%)	-8.6	40.7	4.3	16.4	16.1	16.3	12.4
34	Passenger Revenue per RPM (Sch. Svc.)(%)	6.3	8.8	1.7	0.4	4.2	3.5	1.4

3/ Mesaba ceased operations at the end of 2011.

QUARTERLY FINANCIAL & TRAFFIC REVIEW SYSTEM OPERATIONS Spirit Air Lines

ITEMS	QUARTER ENDED		12 MONTHS ENDED					
	2014/12	2013/12	2014/12	2014/09	2014/06	2014/03	2013/12	
<u>FINANCIAL RESULTS: (\$Millions)</u>								
1	Operating Revenues	474.5	420.0	1,931.6	1,877.1	1,813.9	1,721.9	1,654.4
2	Operating Expenses	384.5	351.9	1,576.3	1,543.7	1,483.0	1,429.4	1,372.1
3	Operating Profit (Loss)	90.0	68.1	355.3	333.3	331.0	292.6	282.3
4	Net Income (Loss)	57.8	43.2	291.2	276.6	264.0	194.9	161.8
<u>TRAFFIC: (Thousands)</u>								
5	RPMs - Scheduled Svc.	3,707.1	3,153.7	14,159.2	13,605.8	13,188.9	12,627.3	11,999.6
6	ASMs - Scheduled Svc.	4,433.6	3,660.7	16,400.7	15,627.9	15,090.0	14,494.2	13,836.9
7	Overall RTMs (All Svc.)	370.7	315.4	1,415.9	1,360.6	1,318.9	1,262.7	1,200.0
8	Overall ATMs (All Svc.)	437.7	366.1	1,634.4	1,562.8	1,509.0	1,449.4	1,383.7
<u>YIELD & UNIT COST & PROFITS: (Cents)</u>								
9	Operating Revenue per RTM	128.0	133.2	136.4	138.0	137.5	136.4	137.9
10	Operating Expense per RTM	103.7	111.6	111.3	113.5	112.4	113.2	114.3
11	Operating Profit (Loss) per RTM	24.3	21.6	25.1	24.5	25.1	23.2	23.5
12	Operating Expense per ATM	87.9	96.1	96.4	98.8	98.3	98.6	99.2
13	Passenger Revenue per RPM	7.87	8.33	8.63	8.76	8.72	8.57	8.70
<u>FINANCIAL RATIOS:</u>								
14	Operating Revenues to Total Investment	*	*	2.19	2.28	2.36	2.41	2.47
15	Times Interest Earned	*	*	999.90	2,351.83	999.90	999.90	999.90
16	Current Assets to Current Liabilities	*	*	1.96	1.75	1.69	1.61	1.91
17	No. of Days Cash Coverage of Cash Exp.	*	*	151.0	143.2	143.5	142.6	144.5
<u>FINANCIAL PERCENTAGES:</u>								
18	Operating Profit (Loss) to Operating Revenue	19.0	16.2	18.4	17.8	18.2	17.0	17.1
19	Net Income to Stockholders Equity	*	*	33.1	33.5	34.4	27.3	24.2
20	Corporate Return on Investment	*	*	33.0	33.6	34.4	27.2	24.1
21	Debt to Total Investment	*	*	0.0	0.0	0.0	0.0	0.0
<u>PASSENGER LOAD FACTOR: (Sch. Svc. %)</u>								
22	Actual	83.6	86.1	86.3	87.1	87.4	87.1	86.7
23	Breakeven	56.8	63.5	59.2	60.9	60.4	62.1	61.8
<u>Employment & Productivity:</u>								
24	Employment, Total Weighted Avg CY	4,077	3,517	3,774	3,634	3,532	3,431	3,308
25	Overall RTM's per Employee (000)	90.9	89.7	375.2	374.4	373.4	368.0	362.7

CHANGE OVER COMPARABLE PERIOD 12 MONTHS EARLIER								
26	Operating Revenues (%)	13.0	27.9	16.8	20.1	25.2	24.1	25.5
27	Operating Expenses (%)	9.3	18.8	14.9	17.3	18.6	19.0	19.9
28	Operating Profit (Loss) (in Millions \$)	21.9	36.1	73.0	87.2	132.9	106.2	108.3
29	Net Income (Loss)(in Millions \$)	14.6	26.0	129.4	140.8	156.2	94.8	68.5
30	RPMs (Sch. Svc.) (%)	17.5	25.2	18.0	19.7	23.8	25.2	24.7
31	ASMs (Sch. Svc.) (%)	21.1	23.8	18.5	19.0	21.3	22.4	22.5
32	Operating Revenues per RTM (%)	-3.9	2.2	-1.1	0.3	1.2	-0.8	0.6
33	Operating Expense per RTM (%)	-7.1	-5.1	-2.6	-2.0	-4.2	-4.9	-3.9
34	Passenger Revenue per RPM (Sch. Svc.)(%)	-5.4	4.2	-0.8	1.4	2.9	-0.9	0.6

QUARTERLY FINANCIAL & TRAFFIC REVIEW SYSTEM OPERATIONS Sun Country Airlines d/b/a MN Airlines

ITEMS	QUARTER ENDED		12 MONTHS ENDED					
	2014/12	2013/12	2014/12	2014/09	2014/06	2014/03	2013/12	
<u>FINANCIAL RESULTS: (\$Millions)</u>								
1	Operating Revenues	116.2	100.8	533.2	517.8	498.9	477.8	478.9
2	Operating Expenses	128.1	112.2	532.2	516.3	503.4	482.4	485.2
3	Operating Profit (Loss)	-11.9	-11.5	1.1	1.5	-4.5	-4.6	-6.2
4	Net Income (Loss)	-12.1	-11.7	-0.1	0.3	-5.7	-5.7	-7.2
<u>TRAFFIC: (Thousands)</u>								
5	RPMs - Scheduled Svc.	628.2	552.9	3,027.4	2,952.2	2,872.7	2,808.4	2,702.5
6	ASMs - Scheduled Svc.	857.4	812.4	4,178.9	4,133.9	4,055.3	3,872.5	3,635.8
7	Overall RTMs (All Svc.)	72.9	62.7	336.6	326.4	317.5	309.0	299.4
8	Overall ATMs (All Svc.)	151.2	149.8	693.1	691.7	683.6	648.2	574.8
<u>YIELD & UNIT COST & PROFITS: (Cents)</u>								
9	Operating Revenue per RTM	159.5	160.7	158.4	158.6	157.1	154.6	160.0
10	Operating Expense per RTM	175.8	178.9	158.1	158.2	158.5	156.1	162.0
11	Operating Profit (Loss) per RTM	-16.3	-18.3	0.3	0.5	-1.4	-1.5	-2.1
12	Operating Expense per ATM	84.7	74.9	76.8	74.6	73.6	74.4	84.4
13	Passenger Revenue per RPM	12.28	13.15	12.81	12.99	13.04	13.02	13.54
<u>FINANCIAL RATIOS:</u>								
14	Operating Revenues to Total Investment	*	*	7.70	7.23	6.82	6.38	6.46
15	Times Interest Earned	*	*	0.88	1.21	-3.92	-4.37	-6.37
16	Current Assets to Current Liabilities	*	*	0.85	1.01	1.04	0.92	0.92
17	No. of Days Cash Coverage of Cash Exp.	*	*	16.8	10.6	6.0	11.4	12.9
<u>FINANCIAL PERCENTAGES:</u>								
18	Operating Profit (Loss) to Operating Revenue	-10.2	-11.4	0.2	0.3	-0.9	-1.0	-1.3
19	Net Income to Stockholders Equity	*	*	-0.2	0.4	-9.1	-8.9	-11.4
20	Corporate Return on Investment	*	*	1.5	2.0	-6.2	-6.2	-8.4
21	Debt to Total Investment	*	*	18.1	14.5	14.6	14.5	16.1
<u>PASSENGER LOAD FACTOR: (Sch. Svc. %)</u>								
22	Actual	73.3	68.1	72.4	71.4	70.8	72.5	74.3
23	Breakeven	89.1	82.5	76.6	75.3	75.8	77.6	79.3
<u>Employment & Productivity:</u>								
24	Employment, Total Weighted Avg CY	1,252	1,075	1,188	1,144	1,102	1,060	1,016
25	Overall RTM's per Employee (000)	58.2	58.3	283.3	285.3	288.2	291.5	294.7

CHANGE OVER COMPARABLE PERIOD 12 MONTHS EARLIER								
26	Operating Revenues (%)	15.3	2.6	11.3	8.7	7.2	4.4	8.5
27	Operating Expenses (%)	14.1	16.5	9.7	10.0	12.1	10.1	16.5
28	Operating Profit (Loss) (in Millions \$)	-0.4	-13.4	7.3	-5.7	-20.8	-24.4	-30.8
29	Net Income (Loss)(in Millions \$)	-0.4	-13.3	7.1	-5.8	-20.9	-24.3	-30.5
30	RPMs (Sch. Svc.) (%)	13.6	20.3	12.0	13.1	13.1	14.9	17.1
31	ASMs (Sch. Svc.) (%)	5.5	27.8	14.9	19.5	22.1	22.5	20.6
32	Operating Revenues per RTM (%)	-0.7	-9.8	-1.0	-2.8	-4.1	-7.2	-5.2
33	Operating Expense per RTM (%)	-1.8	2.4	-2.4	-1.6	0.3	-2.0	1.7
34	Passenger Revenue per RPM (Sch. Svc.)(%)	-6.6	-4.0	-5.4	-4.8	-3.9	-4.7	-2.8

QUARTERLY FINANCIAL & TRAFFIC REVIEW SYSTEM OPERATIONS USA Jet Airlines

ITEMS	QUARTER ENDED		12 MONTHS ENDED					
	2014/12	2013/12	2014/12	2014/09	2014/06	2014/03	2013/12	
<u>FINANCIAL RESULTS: (\$Millions)</u>								
1	Operating Revenues	171.7	156.7	672.5	657.4	649.5	636.9	608.8
2	Operating Expenses	145.6	124.8	579.8	559.1	543.9	536.3	513.1
3	Operating Profit (Loss)	26.1	31.9	92.6	98.4	105.6	100.6	95.7
4	Net Income (Loss)	13.2	14.0	33.4	34.1	40.4	36.1	31.9
<u>TRAFFIC: (Thousands)</u>								
5	RPMs - Scheduled Svc.	964.2	947.2	3,849.4	3,832.5	3,840.2	3,765.1	3,759.9
6	ASMs - Scheduled Svc.	1,260.9	1,233.1	4,953.4	4,925.6	4,944.3	4,888.5	4,948.4
7	Overall RTMs (All Svc.)	97.6	96.3	389.5	388.2	389.1	381.9	381.2
8	Overall ATMs (All Svc.)	182.4	177.9	711.1	706.6	707.7	701.1	708.7
<u>YIELD & UNIT COST & PROFITS: (Cents)</u>								
9	Operating Revenue per RTM	176.0	162.7	172.7	169.4	166.9	166.8	159.7
10	Operating Expense per RTM	149.2	129.6	148.9	144.0	139.8	140.4	134.6
11	Operating Profit (Loss) per RTM	26.8	33.1	23.8	25.3	27.1	26.3	25.1
12	Operating Expense per ATM	79.8	70.2	81.5	79.1	76.9	76.5	72.4
13	Passenger Revenue per RPM	10.02	10.53	10.15	10.28	10.28	10.55	10.79
<u>FINANCIAL RATIOS:</u>								
14	Operating Revenues to Total Investment	*	*	0.80	0.77	0.75	0.72	0.68
15	Times Interest Earned	*	*	2.42	2.47	2.55	2.32	2.14
16	Current Assets to Current Liabilities	*	*	1.82	1.82	1.79	1.74	0.00
17	No. of Days Cash Coverage of Cash Exp.	*	*	13.4	14.7	10.2	6.8	61.3
<u>FINANCIAL PERCENTAGES:</u>								
18	Operating Profit (Loss) to Operating Revenue	15.2	20.3	13.8	15.0	16.3	15.8	15.7
19	Net Income to Stockholders Equity	*	*	14.9	15.7	19.2	17.7	16.1
20	Corporate Return on Investment	*	*	8.5	8.6	9.4	9.0	8.6
21	Debt to Total Investment	*	*	70.8	72.3	73.3	74.8	75.6
<u>PASSENGER LOAD FACTOR: (Sch. Svc. %)</u>								
22	Actual	76.5	76.8	77.7	77.8	77.7	77.0	76.0
23	Breakeven	58.1	55.6	60.6	59.9	58.6	59.2	59.4
<u>Employment & Productivity:</u>								
24	Employment, Total Weighted Avg CY	284	271	281	278	273	271	272
25	Overall RTM's per Employee (000)	343.7	355.5	1,385.9	1,396.3	1,425.4	1,409.2	1,401.5

CHANGE OVER COMPARABLE PERIOD 12 MONTHS EARLIER								
26	Operating Revenues (%)	9.6	1.2	10.5	8.3	6.2	-4.4	-13.7
27	Operating Expenses (%)	16.6	-6.1	13.0	7.3	3.4	-6.8	-15.9
28	Operating Profit (Loss) (in Millions \$)	-5.7	10.0	-3.1	12.7	20.0	10.0	0.5
29	Net Income (Loss)(in Millions \$)	-0.8	11.3	1.5	13.5	20.5	13.0	6.6
30	RPMs (Sch. Svc.) (%)	1.8	2.1	2.4	2.5	2.7	1.5	3.6
31	ASMs (Sch. Svc.) (%)	2.3	1.0	0.1	-0.2	0.1	-1.6	-1.2
32	Operating Revenues per RTM (%)	8.2	-1.2	8.1	5.7	3.4	-5.8	-16.3
33	Operating Expense per RTM (%)	15.1	-8.4	10.6	4.7	0.7	-8.2	-18.5
34	Passenger Revenue per RPM (Sch. Svc.)(%)	-4.9	-1.6	-5.9	-5.1	-4.9	-9.0	-14.0

QUARTERLY FINANCIAL & TRAFFIC REVIEW SYSTEM OPERATIONS Virgin America

ITEMS	QUARTER ENDED		12 MONTHS ENDED					
	2014/12	2013/12	2014/12	2014/09	2014/06	2014/03	2013/12	
<u>FINANCIAL RESULTS: (\$Millions)</u>								
1	Operating Revenues	372.2	359.9	1,490.0	1,477.7	1,459.5	1,436.7	1,424.7
2	Operating Expenses	362.1	334.1	1,393.6	1,365.6	1,353.0	1,349.3	1,337.7
3	Operating Profit (Loss)	10.1	25.8	96.4	112.1	106.5	87.4	87.0
4	Net Income (Loss)	3.9	15.8	60.1	72.1	64.0	35.8	11.8
<u>TRAFFIC: (Thousands)</u>								
5	RPMs - Scheduled Svc.	2,476.0	2,396.9	10,080.0	10,000.9	9,926.9	9,931.7	9,822.6
6	ASMs - Scheduled Svc.	3,040.7	3,052.7	12,237.7	12,249.6	12,275.3	12,326.3	12,244.2
7	Overall RTMs (All Svc.)	247.6	239.7	1,009.2	1,001.3	993.9	994.7	984.3
8	Overall ATMs (All Svc.)	395.9	396.8	1,598.5	1,599.5	1,602.1	1,610.5	1,604.3
<u>YIELD & UNIT COST & PROFITS: (Cents)</u>								
9	Operating Revenue per RTM	150.3	150.2	147.6	147.6	146.8	144.4	144.7
10	Operating Expense per RTM	146.2	139.4	138.1	136.4	136.1	135.7	135.9
11	Operating Profit (Loss) per RTM	4.1	10.8	9.6	11.2	10.7	8.8	8.8
12	Operating Expense per ATM	91.5	84.2	87.2	85.4	84.5	83.8	83.4
13	Passenger Revenue per RPM	13.22	13.42	13.01	13.06	13.03	12.96	13.10
<u>FINANCIAL RATIOS:</u>								
14	Operating Revenues to Total Investment	*	*	3.26	3.64	3.97	4.44	4.75
15	Times Interest Earned	*	*	2.60	2.76	2.56	1.72	1.17
16	Current Assets to Current Liabilities	*	*	1.30	1.07	1.05	0.91	1.14
17	No. of Days Cash Coverage of Cash Exp.	*	*	104.5	49.8	49.1	36.3	42.9
<u>FINANCIAL PERCENTAGES:</u>								
18	Operating Profit (Loss) to Operating Revenue	2.7	7.2	6.5	7.6	7.3	6.1	6.1
19	Net Income to Stockholders Equity	*	*					
20	Corporate Return on Investment	*	*	21.4	27.8	28.6	26.4	27.7
21	Debt to Total Investment	*	*	22.1	163.6	177.4	206.1	193.4
<u>PASSENGER LOAD FACTOR: (Sch. Svc. %)</u>								
22	Actual	81.4	78.5	82.4	81.6	80.9	80.6	80.2
23	Breakeven	81.3	73.6	77.9	75.9	75.4	76.1	75.5
<u>Employment & Productivity:</u>								
24	Employment, Total Weighted Avg CY	2,514	2,487	2,513	2,506	2,484	2,459	2,426
25	Overall RTM's per Employee (000)	98.5	96.4	401.6	399.6	400.1	404.5	405.7

CHANGE OVER COMPARABLE PERIOD 12 MONTHS EARLIER								
26	Operating Revenues (%)	3.4	2.7	4.6	4.4	4.6	5.1	6.9
27	Operating Expenses (%)	8.4	-3.6	4.2	1.1	-0.3	-0.8	-1.7
28	Operating Profit (Loss) (in Millions \$)	-15.7	22.1	9.4	47.2	68.0	80.4	115.0
29	Net Income (Loss)(in Millions \$)	-12.0	40.8	48.3	101.1	139.1	151.6	157.2
30	RPMs (Sch. Svc.) (%)	3.3	0.7	2.6	2.0	0.4	1.9	-1.0
31	ASMs (Sch. Svc.) (%)	-0.4	-1.2	-0.1	-0.3	-1.1	-0.6	-2.2
32	Operating Revenues per RTM (%)	0.1	2.1	2.0	2.5	4.2	3.1	7.9
33	Operating Expense per RTM (%)	4.9	-4.2	1.6	-0.7	-0.6	-2.6	-0.8
34	Passenger Revenue per RPM (Sch. Svc.)(%)	-1.5	-0.8	-0.7	-0.5	0.7	0.6	6.2

QUARTERLY FINANCIAL & TRAFFIC REVIEW SYSTEM OPERATIONS Vision Airlines

ITEMS	QUARTER ENDED		12 MONTHS ENDED					
	2014/12	2013/12	2014/12	2014/09	2014/06	2014/03	2013/12	
<u>FINANCIAL RESULTS: (\$Millions)</u>								
1	Operating Revenues	4.8	6.3	22.6	24.1	21.8	23.7	28.3
2	Operating Expenses	6.5	7.6	30.0	31.0	30.2	31.3	35.8
3	Operating Profit (Loss)	-1.7	-1.2	-7.4	-6.9	-8.4	-7.6	-7.5
4	Net Income (Loss)	1.5	-1.2	-4.2	-7.0	-8.4	-7.7	-7.7
<u>TRAFFIC: (Thousands)</u>								
5	RPMs - Scheduled Svc.	0.6	9.6	36.4	45.3	31.1	38.1	39.7
6	ASMs - Scheduled Svc.	1.1	11.7	66.6	77.2	37.2	45.2	46.0
7	Overall RTMs (All Svc.)	1.9	2.8	16.4	17.3	11.8	11.5	12.3
8	Overall ATMs (All Svc.)	5.0	4.6	37.2	36.8	20.7	19.2	21.2
<u>YIELD & UNIT COST & PROFITS: (Cents)</u>								
9	Operating Revenue per RTM	258.9	228.3	137.9	139.4	184.6	205.7	230.6
10	Operating Expense per RTM	351.0	273.3	182.9	179.3	255.5	271.4	291.8
11	Operating Profit (Loss) per RTM	-92.2	-44.9	-44.9	-39.9	-70.9	-65.7	-61.2
12	Operating Expense per ATM	129.5	163.3	80.7	84.4	146.2	162.7	168.7
13	Passenger Revenue per RPM	0.00	0.00	0.00	0.00	0.00	0.00	0.00
<u>FINANCIAL RATIOS:</u>								
14	Operating Revenues to Total Investment	*	*	999.90	999.90	999.90	999.90	999.90
15	Times Interest Earned	*	*	-106.31	-178.29	-145.10	-50.52	-52.10
16	Current Assets to Current Liabilities	*	*	0.78	0.61	0.24	0.29	0.28
17	No. of Days Cash Coverage of Cash Exp.	*	*	1.8	-13.1	-13.3	-6.8	-13.8
<u>FINANCIAL PERCENTAGES:</u>								
18	Operating Profit (Loss) to Operating Revenue	-35.6	-19.7	-32.6	-28.6	-38.4	-32.0	-26.5
19	Net Income to Stockholders Equity	*	*					
20	Corporate Return on Investment	*	*	0.0	0.0	0.0	0.0	0.0
21	Debt to Total Investment	*	*	619.4	672.8	-81.3	-84.0	-117.1
<u>PASSENGER LOAD FACTOR: (Sch. Svc. %)</u>								
22	Actual	57.5	82.1	54.6	58.7	83.6	84.2	86.3
23	Breakeven	0.0	0.0	0.0	0.0	0.0	0.0	0.0
<u>Employment & Productivity:</u>								
24	Employment, Total Weighted Avg CY	178	233	224	238	233	228	231
25	Overall RTM's per Employee (000)	10.4	11.9	73.2	72.8	50.8	50.6	53.2

CHANGE OVER COMPARABLE PERIOD 12 MONTHS EARLIER								
26	Operating Revenues (%)	-24.0	-42.8	-20.1	-26.9	-50.5	-60.6	-62.2
27	Operating Expenses (%)	-13.8	-54.9	-16.3	-31.0	-46.5	-56.2	-57.3
28	Operating Profit (Loss) (in Millions \$)	-0.5	4.5	0.1	5.1	4.1	3.7	1.4
29	Net Income (Loss)(in Millions \$)	2.8	20.6	3.5	21.3	20.3	20.2	18.0
30	RPMs (Sch. Svc.) (%)	-93.6	48.1	-8.4	23.9	-24.3	-5.7	-3.0
31	ASMs (Sch. Svc.) (%)	-90.9	50.9	45.0	83.7	-31.2	-24.0	-26.2
32	Operating Revenues per RTM (%)	13.4	37.3	-40.2	-31.9	-16.1	-28.7	-34.4
33	Operating Expense per RTM (%)	28.5	8.3	-37.3	-35.7	-9.4	-20.7	-25.8
34	Passenger Revenue per RPM (Sch. Svc.)(%)	0.0	0.0	-100.0	-100.0	0.0	0.0	-99.7

**Comparison of Operating Profit (Loss) For Individual Passenger Nationals
 Quarterly and 12-Month Ended Periods
 December 2013 and 2014 1/**

Group/Carrier	Operating Profit (Loss) (\$Millions)					
	Quarterly Data			12 Month Ended Data		
	12/2013	12/2014	\$Chg	12/2013	12/2014	\$Chg
System Passenger Nationals	179.1	162.0	38.0	747.3	785.4	38.0
Air Wisconsin Airlines	2.5	5.7	(7.8)	15.7	7.9	(7.8)
Allegiant Air	26.9	12.0	6.6	131.6	138.2	6.6
Compass Airlines	1.2	(0.4)	(2.1)	8.2	6.1	(2.1)
Endeavor Air	(3.9)	(10.4)	(8.8)	(6.6)	(15.4)	(8.8)
Executive Airlines 5/	-	-	1.9	(1.9)	-	1.9
ExpressJet Airlines	(8.3)	(15.3)	(71.0)	(28.0)	(99.0)	(71.0)
GoJet Airlines d/b/a United Express	4.1	3.4	(9.5)	20.7	11.3	(9.5)
Horizon Air	7.1	6.5	(10.4)	35.0	24.7	(10.4)
Mesa Airlines	11.4	22.9	16.7	42.8	59.5	16.7
North American Airlines 2/	2.1	-	(5.4)	2.3	(3.1)	(5.4)
PSA Airlines	(3.7)	13.8	(8.6)	6.1	(2.5)	(8.6)
Republic Airlines	26.5	10.9	49.7	70.0	119.7	49.7
Spirit Air Lines	68.1	90.0	73.0	282.3	355.3	73.0
Sun Country Airlines d/b/a MN Airlines	(11.5)	(11.9)	7.3	(6.2)	1.1	7.3
USA Jet Airlines	31.9	26.1	(3.1)	95.7	92.6	(3.1)
Virgin America	25.8	10.1	9.4	87.0	96.4	9.4
Vision Airlines	(1.2)	(1.7)	0.1	(7.5)	(7.4)	0.1

1/ The United-Continental merger resulted in the elimination of Continental Micronesia's operating certificate.

2/ North American ceased *scheduled* operations June 7, 2014.

3/ Colgan, formerly a Pinnacle Airlines subsidiary, was phased out and ceased operations on September 5, 2012.

4/ Comair ceased operations on September 29, 2012.

5/ Executive Airlines ceased scheduled service April 1, 2013

**Comparison of Net Income (Loss) For Individual Passenger Nationals
 Quarterly and 12-Month Ended Periods
 December 2013 and 2014 1/**

Group/Carrier	Net Income (Loss) (\$Millions)					
	Quarterly Data			12 Month Ended Data		
	12/2013	12/2014	\$Chg	12/2013	12/2014	\$Chg
System Passenger Nationals	79.8	78.7	44.4	421.5	465.9	44.4
Air Wisconsin Airlines	3.0	4.2	(6.5)	12.6	6.1	(6.5)
Allegiant Air	26.1	7.2	(2.1)	130.0	127.9	(2.1)
Compass Airlines	1.2	(0.4)	0.5	8.3	8.7	0.5
Endeavor Air	(5.4)	(11.8)	(2.2)	(20.9)	(23.1)	(2.2)
Executive Airlines 5/	-	-	0.7	(0.7)	-	0.7
ExpressJet Airlines	(8.8)	(17.9)	(51.7)	(32.3)	(84.0)	(51.7)
GoJet Airlines d/b/a United Express	1.2	0.7	(8.6)	8.8	0.2	(8.6)
Horizon Air	2.2	0.6	(3.4)	12.7	9.3	(3.4)
Mesa Airlines	9.6	18.6	7.6	38.4	45.9	7.6
North American Airlines 2/	(5.5)	-	(98.3)	64.1	(34.2)	(98.3)
PSA Airlines	(4.2)	12.1	(14.0)	7.9	(6.1)	(14.0)
Republic Airlines	0.4	1.1	32.6	2.1	34.7	32.6
Spirit Air Lines	43.2	57.8	129.4	161.8	291.2	129.4
Sun Country Airlines d/b/a MN Airlines	(11.7)	(12.1)	7.1	(7.2)	(0.1)	7.1
USA Jet Airlines	14.0	13.2	1.5	31.9	33.4	1.5
Virgin America	15.8	3.9	48.3	11.8	60.1	48.3
Vision Airlines	(1.2)	1.5	3.5	(7.7)	(4.2)	3.5

1/ The United-Continental merger resulted in the elimination of Continental Micronesia's operating certificate.

2/ North American ceased scheduled operations June 7, 2014.

3/ Colgan, formerly a Pinnacle Airlines subsidiary, was phased out and ceased operations on September 5, 2012.

4/ Comair ceased operations on September 29, 2012.

5/ Executive Airlines ceased scheduled service April 1, 2013

**Comparison of Passenger Load Factor For Individual Passenger Nationals
 Quarterly and 12-Month Ended Periods
 December 2013 and 2014 1/**

Passenger Load Factor (Percent)						
Group/Carrier	Quarterly Data			12 Month Ended Data		
	12/2013	12/2014	Pt.Chg.	12/2013	12/2014	Pt.Chg.
System Passenger Nationals	80.1	80.5	0.4	80.7	81.8	1.1
Air Wisconsin Airlines	76.3	76.5	0.2	76.0	78.2	2.2
Allegiant Air	85.2	87.1	1.8	88.9	89.3	0.4
Compass Airlines	77.5	79.6	2.1	76.8	81.0	4.1
Endeavor Air	76.4	77.2	0.8	77.4	78.9	1.5
Executive Airlines 5/	-	-	-	54.6	-	(54.6)
ExpressJet Airlines	80.6	80.2	(0.4)	79.7	81.2	1.5
GoJet Airlines d/b/a United Express	80.2	77.4	(2.8)	80.0	79.2	(0.8)
Horizon Air	79.8	78.4	(1.4)	80.8	79.4	(1.4)
Mesa Airlines	83.0	81.6	(1.4)	82.7	82.5	(0.2)
PSA Airlines	76.8	80.4	3.6	76.6	80.6	4.0
Republic Airlines	77.1	77.6	0.6	77.8	79.4	1.6
Spirit Air Lines	86.1	83.6	(2.5)	86.7	86.3	(0.4)
Sun Country Airlines d/b/a MN Airlines	68.1	73.3	5.2	74.3	72.4	(1.9)
USA Jet Airlines	76.8	76.5	(0.3)	76.0	77.7	1.7
Virgin America	78.5	81.4	2.9	80.2	82.4	2.1
Vision Airlines	82.1	57.5	(24.6)	86.3	54.6	(31.8)

1/ The United-Continental merger resulted in the elimination of Continental Micronesia's operating certificate.

2/ North American ceased scheduled operations June 7, 2014.

3/ Colgan, formerly a Pinnacle Airlines subsidiary, was phased out and ceased operations on September 5, 2012.

4/ Comair ceased operations on September 29, 2012.

5/ Executive Airlines ceased scheduled service April 1, 2013

**Comparison of Passenger Yield For Individual Passenger Nationals
 Quarterly and 12-Month Ended Periods
 December 2013 and 2014 1/**

Scheduled Passenger Yield (Cents)						
Group/Carrier	Quarterly Data			12 Month Ended Data		
	12/2013	12/2014	Pct.Chg.	12/2013	12/2014	Pct.Chg.
System Passenger Nationals	10.9	10.6	(3.0)	10.9	10.6	(2.8)
Air Wisconsin Airlines	29.0	26.2	(9.7)	28.6	27.2	(5.2)
Allegiant Air	10.6	10.4	(2.0)	10.1	10.3	2.2
Compass Airlines	5.0	4.5	(9.8)	4.8	4.9	1.3
Endeavor Air	10.2	8.5	(16.8)	9.7	8.9	(8.9)
Executive Airlines 5/	-	-	-	48.7	-	(100.0)
ExpressJet Airlines	8.4	9.0	7.3	8.7	8.5	(2.8)
GoJet Airlines d/b/a United Express	8.0	7.8	(2.9)	8.0	7.6	(5.4)
Horizon Air	17.4	17.4	0.1	17.0	16.8	(0.9)
Mesa Airlines	11.0	8.6	(22.4)	10.5	9.7	(6.7)
PSA Airlines	20.8	22.1	6.3	18.1	18.4	1.7
Republic Airlines	13.0	12.3	(5.5)	13.3	12.1	(8.4)
Spirit Air Lines	8.3	7.9	(5.4)	8.7	8.6	(0.8)
Sun Country Airlines d/b/a MN Airlines	13.2	12.3	(6.6)	13.5	12.8	(5.4)
USA Jet Airlines	10.5	10.0	(4.9)	10.8	10.1	(5.9)
Virgin America	13.4	13.2	(1.5)	13.1	13.0	(0.7)
Vision Airlines	-	-	(24.6)	0.0	2.0	(100.0)

1/ The United-Continental merger resulted in the elimination of Continental Micronesia's operating certificate.

2/ North American ceased scheduled operations June 7, 2014.

3/ Colgan, formerly a Pinnacle Airlines subsidiary, was phased out and ceased operations on September 5, 2012.

4/ Comair ceased operations on September 29, 2012.

5/ Executive Airlines ceased scheduled service April 1, 2013

**Comparison of Operating Profit Margin For Individual Passenger Nationals
 Quarterly and 12-Month Ended Periods
 December 2013 and 2014 1/**

Operating Profit Margin (Percent)						
Group/Carrier	Quarterly Data			12 Month Ended Data		
	12/2013	12/2014	Pt. Chg	12/2013	12/2014	Pt. Chg.
System Passenger Nationals	7.0	6.1	(1.0)	7.3	7.4	0.1
Air Wisconsin Airlines	1.6	3.8	2.2	2.4	1.2	(1.2)
Allegiant Air	11.7	4.4	(7.2)	13.7	12.6	(1.2)
Compass Airlines	3.5	(1.2)	(4.7)	6.1	4.3	(1.8)
Endeavor Air	(2.7)	(8.1)	(5.4)	(1.1)	(2.9)	(1.8)
Executive Airlines 5/	-	-	-	(15.7)	-	15.7
ExpressJet Airlines	(2.3)	(4.5)	(2.2)	(1.9)	(7.3)	(5.4)
GoJet Airlines d/b/a United Express	8.5	7.1	(1.4)	10.2	5.8	(4.5)
Horizon Air	7.5	6.8	(0.7)	9.4	6.6	(2.8)
Mesa Airlines	10.3	18.2	7.9	9.9	13.0	3.1
North American Airlines 2/	4.4	4.0	(4.4)	1.2	(9.3)	(10.5)
PSA Airlines	(3.9)	10.6	14.6	1.8	(0.7)	(2.5)
Republic Airlines	15.2	5.3	(9.9)	10.8	15.3	4.5
Spirit Air Lines	16.2	19.0	2.8	17.1	18.4	1.3
Sun Country Airlines d/b/a MN Airlines	(11.4)	(10.2)	1.2	(1.3)	0.2	1.5
USA Jet Airlines	20.3	15.2	(5.1)	15.7	13.8	(2.0)
Virgin America	7.2	2.7	(4.5)	6.1	6.5	0.4
Vision Airlines	(19.7)	(35.6)	(15.9)	(26.5)	(32.6)	(6.1)

1/ The United-Continental merger resulted in the elimination of Continental Micronesia's operating certificate.

2/ North American ceased scheduled operations June 7, 2014.

3/ Colgan, formerly a Pinnacle Airlines subsidiary, was phased out and ceased operations on September 5, 2012.

4/ Comair ceased operations on September 29, 2012.

5/ Executive Airlines ceased scheduled service April 1, 2013

**Comparison of Debt-to-Investment and Total Debt
 For Individual Passenger Nationals
 Quarterly and 12-Month Ended Periods
 December 2013 and 2014 1/**

Group/Carrier	Debt To Investment (Percent)			Total Debt (\$Millions)		
	Quarterly Data			Quarterly Data		
	12/2013	12/2014	Pt.Chg.	12/2013	12/2014	\$ Chg.
System Passenger Nationals	67.5	55.0	(12.5)	4.5	4.4	(0.1)
Air Wisconsin Airlines	88.7	85.6	(3.2)	0.3	0.3	(0.0)
Allegiant Air Total Debt	15.4	29.0	13.6	0.1	0.3	0.2
Endeavor Air Total Debt	55.0	82.1	27.1	0.0	0.0	-
ExpressJet Airlines Debt	51.6	45.2	(6.4)	0.6	0.5	(0.1)
GoJet Airlines d/b/a United Express	84.2	83.2	(1.0)	0.2	0.2	(0.0)
Horizon Air Total Debt	64.9	64.4	(0.5)	0.3	0.3	0.0
Mesa Airlines Total Debt	86.7	103.6	16.9	0.2	0.4	0.2
North American Airlines 2/	-	-	-	-	-	-
Republic Airlines Debt	96.2	86.5	(9.7)	1.2	1.6	0.3
Sun Country Airlines d/b/a MN Airlines	16.1	18.1	2.0	0.0	0.0	0.0
USA Jet Airlines Debt	75.6	70.8	(4.8)	0.7	0.6	(0.1)
Virgin America Total Debt	193.4	22.1	(171.3)	0.7	0.1	(0.6)
Vision Airlines Debt	(117.1)	619.4	736.5	0.0	0.0	0.0

1/ The United-Continental merger resulted in the elimination of Continental Micronesia's operating certificate.

2/ North American ceased scheduled operations June 7, 2014.

3/ Colgan, formerly a Pinnacle Airlines subsidiary, was phased out and ceased operations on September 5, 2012.

4/ Comair ceased operations on September 29, 2012.

5/ Executive Airlines ceased scheduled service April 1, 2013

FOOTNOTES

- * Not calculated on a quarterly basis.
- ** Cannot be calculated because balance sheet data not presented on an entity basis.
Data presented only on a system basis.
- ++ Not calculated for all-cargo carriers.
- # Meaningful calculation cannot be made because of negative data.
- & Over +/- 500 percent.

EXPLANATION OF LINE ITEMS

LINE #	DESCRIPTION OF LINE ITEM	DERIVATION OF LINE ITEM
1	Operating Revenues	Operating Revenues (Account 4999)
2	Operating Expenses	Operating Expenses (Account 7199)
3	Operating Profit or Loss	Operating Profit (Account 7999)
4	Net Income or Loss	Net Income (Account 9899)
5	Overall Revenue Ton-miles	Overall Revenue Ton-miles (Item Z-240)
6	Overall Available Ton-miles	Overall Available Ton-miles (Item Z-280)
7	Revenue Passenger-Miles (Scheduled Service)	Total scheduled revenue passenger-miles (Item K-140)
8	Available Seat-Miles (Scheduled Service)	Total scheduled available seat-miles (Item K-280)
9	Operating revenue per revenue ton-mile	$\frac{\text{Operating revenues (Account 4999)}}{\text{Overall revenue ton-miles (Item Z-240)}}$
10	Operating expense per revenue ton-mile	$\frac{\text{Operating expenses (Account 7199)}}{\text{Overall revenue ton-miles (Item Z-240)}}$
11	Operating profit per revenue ton-mile	$\frac{\text{Operating profit (Account 7999)}}{\text{Overall revenue ton-miles (Item Z-240)}}$
12	Operating expense per available ton-mile	$\frac{\text{Operating expenses (Account 7199)}}{\text{Overall available ton-miles (Item Z-280)}}$
13	Passenger revenue per revenue passenger-mile (scheduled service)	$\frac{\text{Passenger revenues (scheduled service) (Account 3901)}}{\text{Total revenue passenger-miles (scheduled service) (Item K-140)}}$
14	Operating revenues to total investment	$\frac{\text{Operating revenue (Account 4999)}}{\text{Total investment (See line 20)}}$
15	Times interest earned	$\frac{\text{Income Before income taxes (Account 8999) + interest on long-term debt and capital leases (Account 8181) + Other interest expense (Account 8182)}}{\text{Interest on long-term debt and capital leases (Account 8181) + Other interest expense (Account 8182)}}$
16	Current assets to current liabilities	$\frac{\text{Current assets (Account 1499)}}{\text{Current liabilities (Account 2199)}}$
17	Number of days coverage of cash operating expenses	$\frac{\text{Cash (Account 1010) + short-term investments (Account 1100)}}{[\text{Total operating expenses (Account 7199) less depreciation and amortization (Account 7000)}] / 365}$
18	Operating Profit to operating revenues	$\frac{\text{Operating profit (Account 7999)}}{\text{Operating revenues (Account 4999)}}$
19	Net income to stockholders' equity	$\frac{\text{Net income (Account 9999)}}{\text{Stockholders' equity (Account 2995) (5 Quarter average)}}$

EXPLANATION OF LINE ITEMS

LINE #	DESCRIPTION OF LINE ITEM	DERIVATION OF LINE ITEM
20	Overall corporate rate of return	<p>Net income plus interest expense</p> <hr/> <p style="text-align: center;">Total investment</p> <p>Net income plus interest expense is: Net income (Account 9899) + interest on long-term debt and capital leases (Account 8181) + other interest expense (Account 8182) + amortization of debt discount, premium and expense (Account 8184).</p> <p>Total investment is: Current maturities of long-term debt (Account 2000) + current obligations under capital leases (Account 2080) + long-term debt (Account 2210) + advances from associated companies (Account 2240) + noncurrent obligations under capital leases (Account 2280) + stockholders' equity (Account 2995) - unamortized debt expense (Account 1840). (A five-quarter average is used).</p>
21	Debt to total investment (end of period)	<p>Current maturities of long-term debt (Account 2000) + current obligations under capital leases (Account 2080) + long-term debt (Account 2210) + advances from associated companies (Account 2240) + noncurrent obligations under capital leases (Account 2280) - unamortized debt expense (Account 1840)</p> <hr/> <p>Total investment (See line 20)</p>
22	Actual passenger load factor (scheduled service)	<p>Revenue passenger-miles (scheduled service (Item K-140)</p> <hr/> <p>Available seat-miles (scheduled service (Item K-280)</p>
23	Operating breakeven load factor (scheduled service)	<p>((Scheduled Passenger Revenue * .95)+Operating Expense-Transport Related Revenue-Transport Related)</p> <hr/> <p>((Scheduled Passenger Revenue * 95) /Passenger Load Factor)</p>
24	Difference, actual-breakeven load factor	Actual (Line 22) - Breakeven (Line 23)
25	Employees	Sum of full time and one-half part time employees(Full time equivalents) (Average for 12-month ended period)
26	Overall revenue ton-miles per employee	<p>Overall revenue ton-miles (Item Z-240)</p> <hr/> <p>Average # of employees (See Line 25)</p>

Alpha Code	Carrier Name
ZW	Air Wisconsin
G4	Allegiant Air
9L	Colgan Air
OH	Comair
CP	Compass Air
CS	Continental Micronesia
OW	Executive Airlines
XE	ExpressJet Airlines
G7	GoJet Airlines d/b/a United Express
QX	Horizon Air
YV	Mesa Airlines
XJ	Mesaba Airlines
NA	North American Airlines
16	PSA Airlines
9E	Pinnacle Airlines
YX	Republic Airlines
NK	Spirit Air Lines
SY	Sun Country Airlines d/b/a Mn Airlines
U5	USA 3000 Airlines
U7	USA Jet Airlines
VX	Virgin America
0JQ	Vision Lines