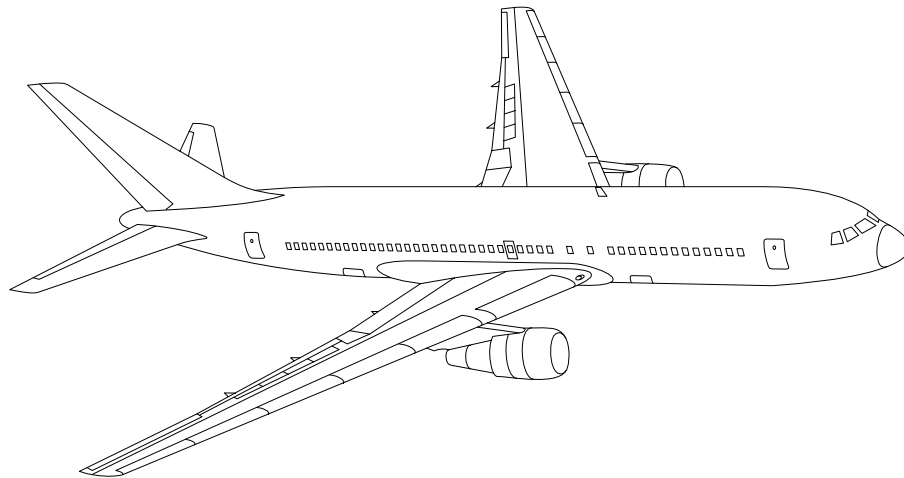


# AIRLINE QUARTERLY FINANCIAL REVIEW

FOURTH QUARTER 2008



MAJORS



DEPARTMENT OF TRANSPORTATION  
OFFICE OF AVIATION ANALYSIS  
COMPETITION AND POLICY ANALYSIS DIVISION

	<u>PAGE</u>
Introduction .....	3
Total System Passenger & All-Cargo Majors .....	4
Chart 1 Operating and Net Profit (Loss) Fourth Quarter 2008 .....	7
Chart 2 Operating and Net Profit (Loss) 12 Months Ended Fourth Quarter 2008 .....	7
Chart 3 Operating Profit (Loss) By Quarter .....	8
Chart 4 Net Income (Loss) By Quarter .....	8
Chart 5 Operating Profit (Loss) By 12-Month Ending Periods .....	9
Chart 6 Net Income (Loss) By 12-Month Ending Periods .....	9
Chart 7 Operating Revenue Per Revenue Ton-Mile Percent Change From Same Period A Year Earlier .....	10
Chart 8 Ton Load Factor Percentage Point Change From Year Earlier...	10
Chart 9 Operating Expense Per Revenue Ton-Mile, Percent Change From Same Period A Year Earlier .....	11
Chart 10 Operating Expense Per Available Ton-Mile, Percent Change From Same Period A Year Earlier .....	11
Total Passenger Majors .....	12
Chart 11 Passenger Revenues Per Revenue Passenger-Mile, Percent Change From Same Period A Year Earlier .....	15
Chart 12 Revenue Passenger-Miles, Percent Change From Same Period A Year Earlier .....	15
Chart 13 Available Seat-Miles, Percent Change From Same Period A Year Earlier .....	16
Chart 14 Passenger Load Factor, Percentage Point Change From Same Period A Year Earlier .....	16
Chart 15 Passenger (RPM) Yield .....	17
Chart 16 Passenger Load Factor .....	17
AirTran, Inc. ....	18
Alaska Airlines, Inc. ....	19
American Airlines, Inc. ....	20
American Eagle, Inc. ....	21
Atlantic Southeast Airlines .....	22
Comair, Inc. ....	23
Continental Air Lines, Inc. ....	24
Delta Air Lines, Inc .....	25
ExpressJet Airlines .....	26
Frontier Airlines .....	27
JetBlue Airways .....	28
Mesa Airlines, Inc. ....	29
Northwest Airlines, Inc. ....	30
Skywest Airlines Co. ....	31
Southwest Airlines Co. ....	32
US Airways, Inc. ....	33
United Air Lines, Inc. ....	34
Total All-Cargo Majors .....	35
Federal Express Corp. ....	38
United Parcel Service .....	39
Comparison of Individual Major Operating Profit (Loss) .....	40
Comparison of Individual Major Net Income (Loss) .....	41
Comparison of Individual Major Scheduled Passenger Load Factor .....	42
Comparison of Individual Major Scheduled Passenger Yield .....	43
Comparison of Individual Major Operating Profit Margin .....	44
Comparison of Individual Major Debt To Investment Ratio and Total Debt ..	45
Footnotes .....	46
Explanation of Line Items .....	47

## INTRODUCTION

This report contains staff comments, tables and charts on the financial condition of the U.S. major airlines.

The data are presented on both a carrier group and an individual carrier basis, but the primary focus is on the individual major carrier and its performance. Data are presented for the most recent quarterly period and the comparable quarter a year earlier and also on a 12-month ended basis as at the end of the five most recent quarters. In addition, data on charges over comparable periods 12-months earlier are presented. A graphic presentation of comparative trends, on a carrier group basis, is made for several unit and overall financial indicators. In the case of merged carriers, data for the carriers involved have been combined and presented under the name of the surviving carrier so that meaningful comparisons could be made.

All data presented in this financial and traffic review are derived from data reported to the U.S. Department of Transportation on Form 41 Schedules by Large Certificated Air Carriers. For comparison purposes, this analysis is limited to the major scheduled passenger and all-cargo air carriers only. Alaska Airlines, with revenues exceeding \$1 billion in calendar year 1995, became a major airline effective January 1, 1996, and is now included in this review. All financial and traffic results have been retroactively restated to include the operations of Alaska. Certain data in this review is classified in two broad categories: namely "domestic" and "international". "Domestic" encompasses operations within and between the 50 states of the United States, the District of Columbia, the Commonwealth of Puerto Rico, and the U.S. Virgin Islands. It also encompasses Canadian transborder operations and for certain carriers Mexican transborder operations. All other operations are considered "international", which is separated into Atlantic, Latin, and Pacific.

Suggestions from users for the improving either the scope, presentation, or utility of this review are invited. It will also be appreciated if suggestions, discrepancies, and errors in the data are called to the attention of the Economic & Financial Division, Office of Aviation Analysis, Office of the Secretary, U.S. Department of Transportation, Washington, D.C. 20590.

## QUARTERLY FINANCIAL & TRAFFIC REVIEW

### SYSTEM OPERATIONS

#### System All Majors

ITEMS	QUARTER ENDED		12 MONTHS ENDED				
	2008/12	2007/12	2008/12	2008/09	2008/06	2008/03	2007/12
<b>FINANCIAL RESULTS: (\$Millions)</b>							
1 Operating Revenues	38,415.2	39,632.6	167,913.6	169,131.0	164,707.6	160,880.4	157,020.4
2 Operating Expenses	39,357.2	39,082.6	171,610.5	171,336.0	162,554.2	154,012.1	148,066.1
3 Operating Profit (Loss)	-942.0	550.0	-3,696.9	-2,204.9	2,153.4	6,868.3	8,954.3
4 Net Income (Loss)	-4,523.6	42.3	-22,973.9	-18,408.1	-13,977.0	-3,847.6	7,582.4
<b>TRAFFIC: (Billions)</b>							
5 RPMs - Scheduled Rev. Svc.	170.3	183.9	748.9	762.6	762.8	763.6	758.9
6 ASMs - Scheduled Rev. Svc.	218.1	235.8	936.9	954.6	952.3	950.2	945.5
7 Overall RTMs (All Svc.)	23.2	25.5	100.8	103.1	103.3	103.2	102.6
8 Overall ATMs (All Svc.)	39.5	42.4	165.3	168.1	168.8	169.0	168.9
<b>YIELD &amp; UNIT COST &amp; PROFITS: (Cents)</b>							
9 Operating Revenue per RTM	166.0	155.6	166.7	164.1	159.4	155.8	153.1
10 Operating Expense per RTM	170.0	153.4	170.3	166.2	157.3	149.2	144.4
11 Operating Profit (Loss) per RTM	-4.1	2.2	-3.7	-2.1	2.1	6.7	8.7
12 Operating Expense per ATM	99.5	92.2	103.8	101.9	96.3	91.1	87.7
13 Passenger Revenue per RPM	13.63	13.27	13.84	13.75	13.48	13.26	13.11
<b>FINANCIAL RATIOS:</b>							
14 Operating Revenues to Total Investment	*	*	1.81	1.72	1.64	1.69	1.77
15 Times Interest Earned	*	*	-6.12	-4.96	-3.36	0.51	3.80
16 Current Assets to Current Liabilities	*	*	0.79	0.84	0.92	0.85	0.89
17 No. of Days Cash Coverage of Cash Exp.	*	*	42.4	56.9	72.2	63.3	68.6
<b>FINANCIAL PERCENTAGES:</b>							
18 Operating Profit (Loss) to Operating Revenue	-2.5	1.4	-2.2	-1.3	1.3	4.3	5.7
19 Net Income to Stockholders Equity	*	*	-68.41	-46.33	-33.20	-10.26	24.11
20 Corporate Return on Investment	*	*	-21.2	-15.4	-10.7	-0.5	12.5
21 Debt to Total Investment	*	*	78.3	69.6	63.8	59.0	53.2
<b>LOAD FACTOR: (%)</b>							
22 Passenger Load Factor (Sch. Svc.)	78.1	78.0	79.9	79.9	80.1	80.4	80.3
23 Ton Load Factor (All Svc.)	58.5	60.1	61.0	61.3	61.2	61.1	60.7
<b>Employment &amp; Productivity:</b>							
24 Employment, Total Weighted Avg CY	485,477	504,120	498,417	503,078	500,902	498,749	494,740
25 Overall RTM's per Employee (000)	47.7	50.5	202.2	204.9	206.3	207.0	207.3

	CHANGE OVER COMPARABLE PERIOD 12 MONTHS EARLIER						
26 Operating Revenues (%)	-3.1	8.4	6.9	9.2	8.8	7.2	6.4
27 Operating Expenses (%)	0.7	10.8	15.9	18.0	13.9	8.6	5.3
28 Operating Profit (Loss) (in Millions \$)	-1,492.0	-733.4	-12,651.2	-11,852.1	-6,488.4	-1,424.1	1,939.8
29 Net Income (Loss) (in Millions \$)	-4,565.8	1,985.9	-30,556.3	-23,972.2	-17,563.2	-849.8	-8,956.3
30 RPMs (Sch. Svc.) (%)	-7.4	2.6	-1.3	0.3	2.4	3.1	3.9
31 ASMs (Sch. Svc.) (%)	-7.5	2.4	-0.9	0.8	1.9	2.2	3.1
32 Operating Revenues per RTM (%)	6.7	5.3	8.9	8.5	6.2	4.2	3.0
33 Operating Expense per RTM (%)	10.8	7.6	18.0	17.2	11.1	5.6	2.0
34 Passenger Revenue per RPM (Sch. Svc.)(%)	2.7	4.9	5.6	6.2	4.7	3.3	2.8

## QUARTERLY FINANCIAL & TRAFFIC REVIEW

### DOMESTIC OPERATIONS

#### Domestic All Majors

ITEMS	QUARTER ENDED		12 MONTHS ENDED				
	2008/12	2007/12	2008/12	2008/09	2008/06	2008/03	2007/12
<b>FINANCIAL RESULTS: (\$Millions)</b>							
1 Operating Revenues	27,450.7	28,677.7	119,109.2	120,336.1	119,596.0	117,517.9	115,130.9
2 Operating Expenses	27,894.6	28,819.5	122,835.3	123,760.2	120,059.4	114,622.2	110,835.2
3 Operating Profit (Loss)	-443.8	-141.9	-3,726.1	-3,424.1	-463.4	2,895.7	4,295.7
4 Net Income (Loss)	-3,088.7	-435.5	-17,444.5	-14,791.3	-11,675.7	-6,149.3	3,055.1
<b>TRAFFIC: (Billions)</b>							
5 RTMs - Scheduled Svc.	119.2	131.2	524.1	536.1	550.1	554.0	552.9
6 ATMs - Scheduled Svc.	151.9	169.4	654.6	672.1	686.9	689.7	689.8
7 Overall RTMs (All Svc.)	14.8	16.4	64.1	65.7	67.4	67.8	67.7
8 Overall ATMs (All Svc.)	24.7	27.6	103.8	106.7	109.7	110.8	111.3
<b>YIELD &amp; UNIT COST &amp; PROFITS: (Cents)</b>							
9 Operating Revenue per RTM	185.9	175.2	185.8	183.1	177.6	173.3	170.1
10 Operating Expense per RTM	188.9	176.1	191.6	188.3	178.3	169.0	163.7
11 Operating Profit (Loss) per RTM	-3.0	-0.9	-5.8	-5.2	-0.7	4.3	6.3
12 Operating Expense per ATM	113.0	104.5	118.3	116.0	109.5	103.5	99.6
13 Passenger Revenue per RPM	13.77	13.53	13.98	13.92	13.62	13.40	13.24
<b>FINANCIAL RATIOS:</b>							
14 Operating Revenues to Total Investment	*	*	**	**	**	**	**
15 Times Interest Earned	*	*	**	**	**	**	**
16 Current Assets to Current Liabilities	*	*	**	**	**	**	**
17 No. of Days Cash Coverage of Cash Exp.	*	*	**	**	**	**	**
<b>FINANCIAL PERCENTAGES:</b>							
18 Operating Profit (Loss) to Operating Revenue	-1.6	-0.5	-3.1	-2.8	-0.4	2.5	3.7
19 Net Income to Stockholders Equity	*	*	**	**	**	**	**
20 Corporate Return on Investment	*	*	-21.5	-16.8	-11.8	-4.8	7.9
21 Debt to Total Investment	*	*	**	**	**	**	**
<b>LOAD FACTOR: (%)</b>							
22 Passenger Load Factor (Sch. Svc.)	78.3	53.2	78.3	69.6	63.8	59.0	53.2
23 Ton Load Factor (All Svc.)	78.5	77.5	80.1	79.8	80.1	80.3	80.2
<b>Employment &amp; Productivity:</b>							
24 Employment, Total Weighted Avg CY	*	*	**	**	**	**	**
25 Overall RTM's per Employee (000)	*	*	**	**	**	**	**

	CHANGE OVER COMPARABLE PERIOD 12 MONTHS EARLIER						
	2008/12	2007/12	2008/12	2008/09	2008/06	2008/03	2007/12
26 Operating Revenues (%)	-4.3	5.9	3.5	6.8	6.3	4.7	2.2
27 Operating Expenses (%)	-3.2	8.7	10.8	15.1	11.0	6.3	2.1
28 Operating Profit (Loss) (in Millions \$)	-301.9	-728.4	-8,021.7	-8,490.3	-4,778.8	-1,512.6	293.7
29 Net Income (Loss)(in Millions \$)	-2,653.2	1,380.2	-20,499.6	-16,500.1	-12,029.4	-2,527.5	-4,891.1
30 RPMs (Sch. Svc.) (%)	-9.2	0.7	-5.2	-1.8	0.6	1.8	0.8
31 ASMs (Sch. Svc.) (%)	-10.3	0.9	-5.1	-1.3	-0.1	0.5	-0.2
32 Operating Revenues per RTM (%)	6.1	4.9	9.2	8.8	5.9	3.2	1.6
33 Operating Expense per RTM (%)	7.3	7.7	17.0	17.2	10.5	4.8	1.4
34 Passenger Revenue per RPM (Sch. Svc.)(%)	1.8	4.2	5.6	5.9	4.0	2.1	1.4

## QUARTERLY FINANCIAL & TRAFFIC REVIEW

### INTERNATIONAL OPERATIONS

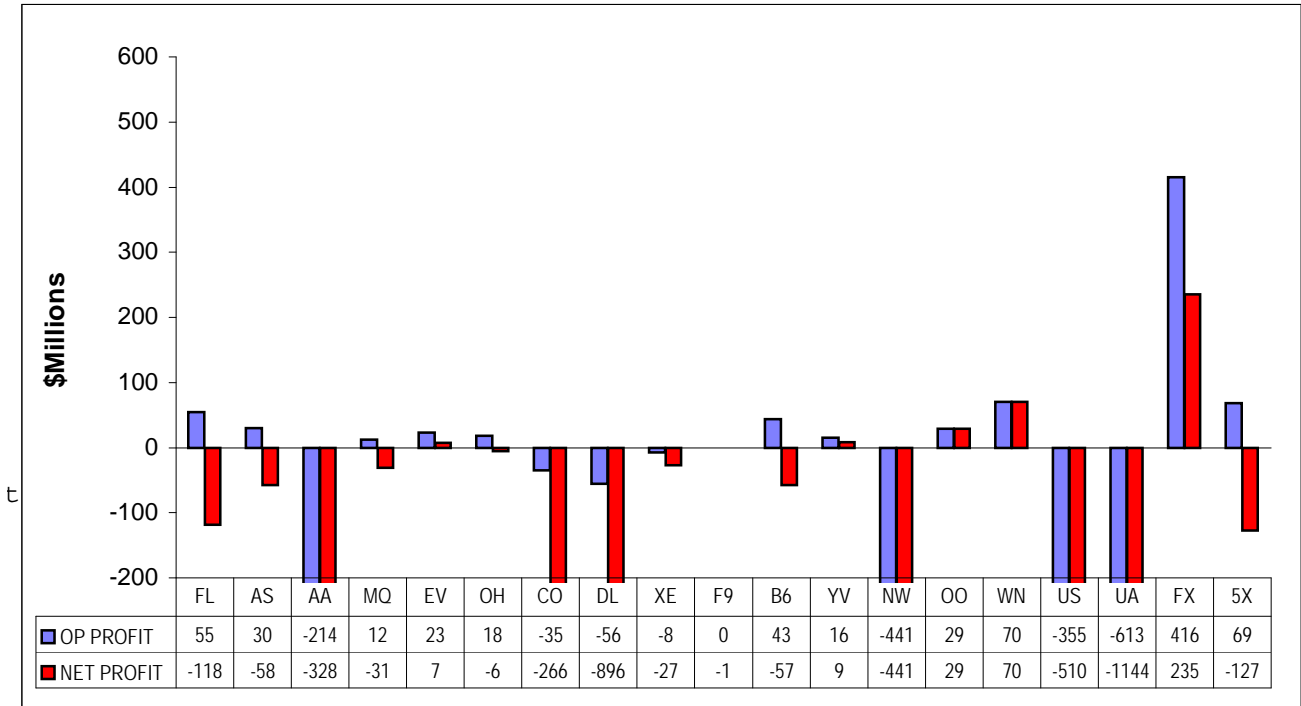
#### Int'l All Majors

ITEMS	QUARTER ENDED		12 MONTHS ENDED				
	2008/12	2007/12	2008/12	2008/09	2008/06	2008/03	2007/12
<b>FINANCIAL RESULTS: (\$Millions)</b>							
1 Operating Revenues	10,964.5	10,954.9	48,804.4	48,794.9	46,894.6	45,145.5	43,672.4
2 Operating Expenses	11,462.7	10,263.1	48,775.3	47,575.7	44,358.7	41,253.7	39,094.7
3 Operating Profit (Loss)	-498.2	691.8	29.2	1,219.2	2,535.9	3,891.7	4,577.7
4 Net Income (Loss)	-1,434.8	477.8	-5,529.5	-3,616.9	-2,366.1	2,236.8	4,462.5
<b>TRAFFIC: (Billions)</b>							
5 RTMs - Scheduled Svc.	51.0	52.7	224.8	226.4	224.3	221.1	217.7
6 ATMs - Scheduled Svc.	66.2	66.4	282.3	282.5	279.1	274.3	269.8
7 Overall RTMs (All Svc.)	8.4	9.1	36.6	37.4	37.2	36.6	36.1
8 Overall ATMs (All Svc.)	14.9	14.8	61.5	61.4	61.0	60.1	59.6
<b>YIELD &amp; UNIT COST &amp; PROFITS: (Cents)</b>							
9 Operating Revenue per RTM	130.8	120.3	133.2	130.6	126.2	123.4	121.1
10 Operating Expense per RTM	136.8	112.7	133.1	127.3	119.4	112.7	108.4
11 Operating Profit (Loss) per RTM	-5.9	7.6	0.1	3.3	6.8	10.6	12.7
12 Operating Expense per ATM	77.1	69.3	79.4	77.5	72.8	68.6	65.6
13 Passenger Revenue per RPM	13.30	12.64	13.51	13.36	12.99	12.79	12.64
<b>FINANCIAL RATIOS:</b>							
14 Operating Revenues to Total Investment	*	*	**	**	**	**	**
15 Times Interest Earned	*	*	**	**	**	**	**
16 Current Assets to Current Liabilities	*	*	**	**	**	**	**
17 No. of Days Cash Coverage of Cash Exp.	*	*	**	**	**	**	**
<b>FINANCIAL PERCENTAGES:</b>							
18 Operating Profit (Loss) to Operating Revenue	-4.5	6.3	0.1	2.5	5.4	8.6	10.5
19 Net Income to Stockholders Equity	*	*	**	**	**	**	**
20 Corporate Return on Investment	*	*	-20.1	-11.2	-6.2	13.4	25.5
21 Debt to Total Investment	*	*	**	**	**	**	**
<b>LOAD FACTOR: (%)</b>							
22 Passenger Load Factor (Sch. Svc.)	77.1	79.3	79.6	80.1	80.4	80.6	80.7
23 Ton Load Factor (All Svc.)	56.4	61.5	59.6	60.9	61.0	60.9	60.5
<b>Employment &amp; Productivity:</b>							
24 Employment, Total Weighted Avg CY	*	*	**	**	**	**	**
25 Overall RTM's per Employee (000)	*	*	**	**	**	**	**

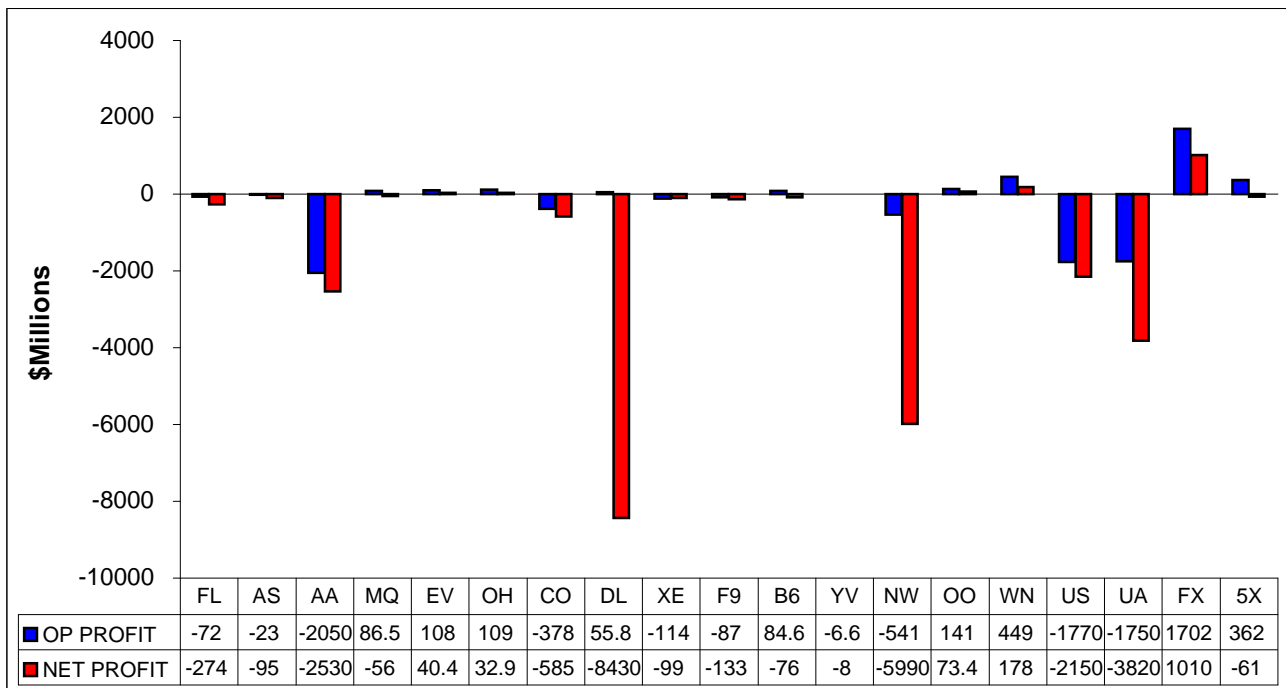
	CHANGE OVER COMPARABLE PERIOD 12 MONTHS EARLIER						
	2008/12	2007/12	2008/12	2008/09	2008/06	2008/03	2007/12
26 Operating Revenues (%)	0.1	15.8	11.8	15.6	14.8	13.4	12.9
27 Operating Expenses (%)	11.7	17.1	24.8	26.4	20.8	14.2	9.5
28 Operating Profit (Loss) (in Millions \$)	-1,190.0	-4.9	-4,548.6	-3,361.9	-1,576.8	221.3	1,613.2
29 Net Income (Loss)(in Millions \$)	-1,912.6	605.7	-9,992.0	-7,472.1	-5,398.3	1,813.2	-4,046.8
30 RTMs (All Svc.) (%)	-3.1	7.3	3.2	5.7	6.5	6.0	6.0
31 ATMs (All Svc.) (%)	-0.4	6.0	4.6	6.1	6.3	5.7	5.5
32 Operating Revenues per RTM (%)	8.8	8.6	10.0	9.9	8.4	8.0	7.9
33 Operating Expense per RTM (%)	21.4	9.9	22.8	20.2	14.0	8.7	4.6
34 Passenger Revenue per RPM (Sch. Svc.)(%)	5.2	7.5	6.9	7.4	6.3	6.7	7.2

## COMPARISONS AMONG MAJOR GROUP AIRLINES

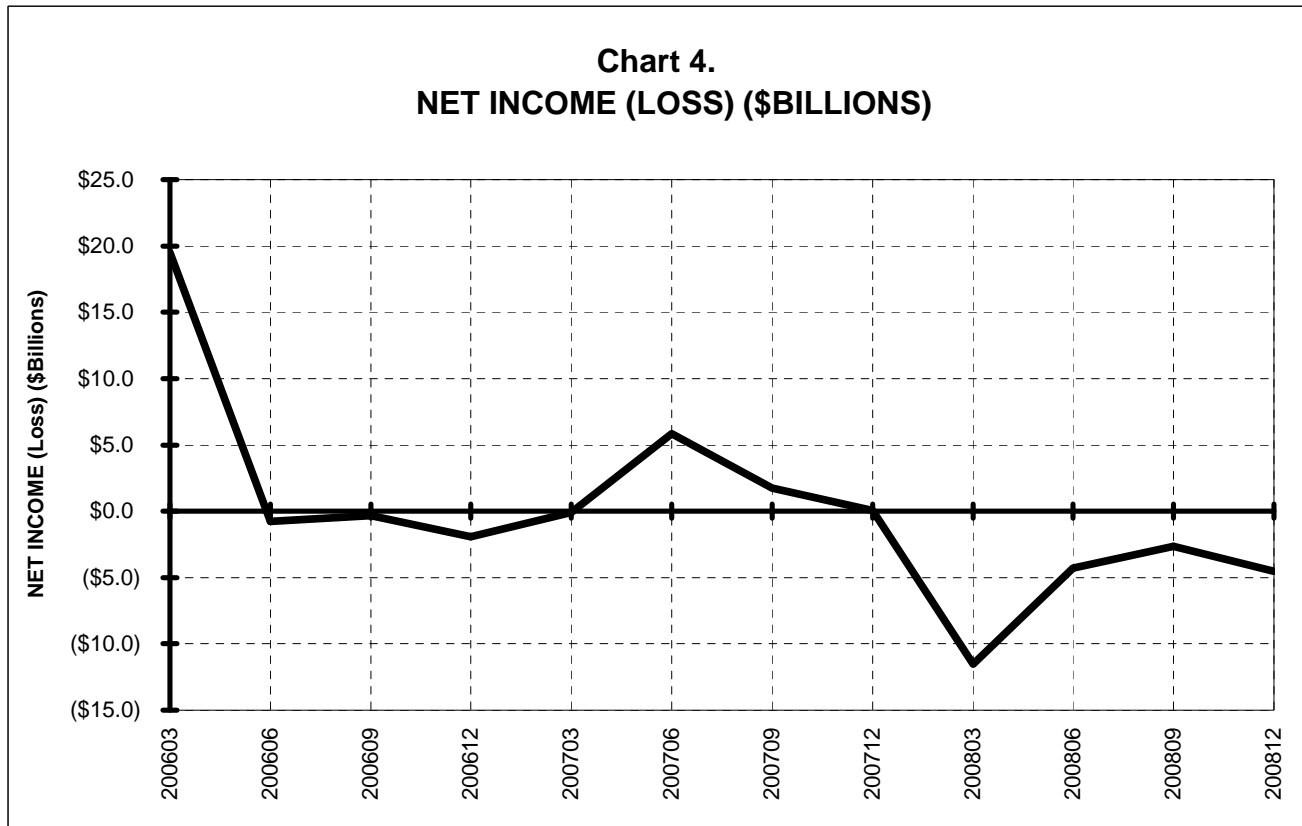
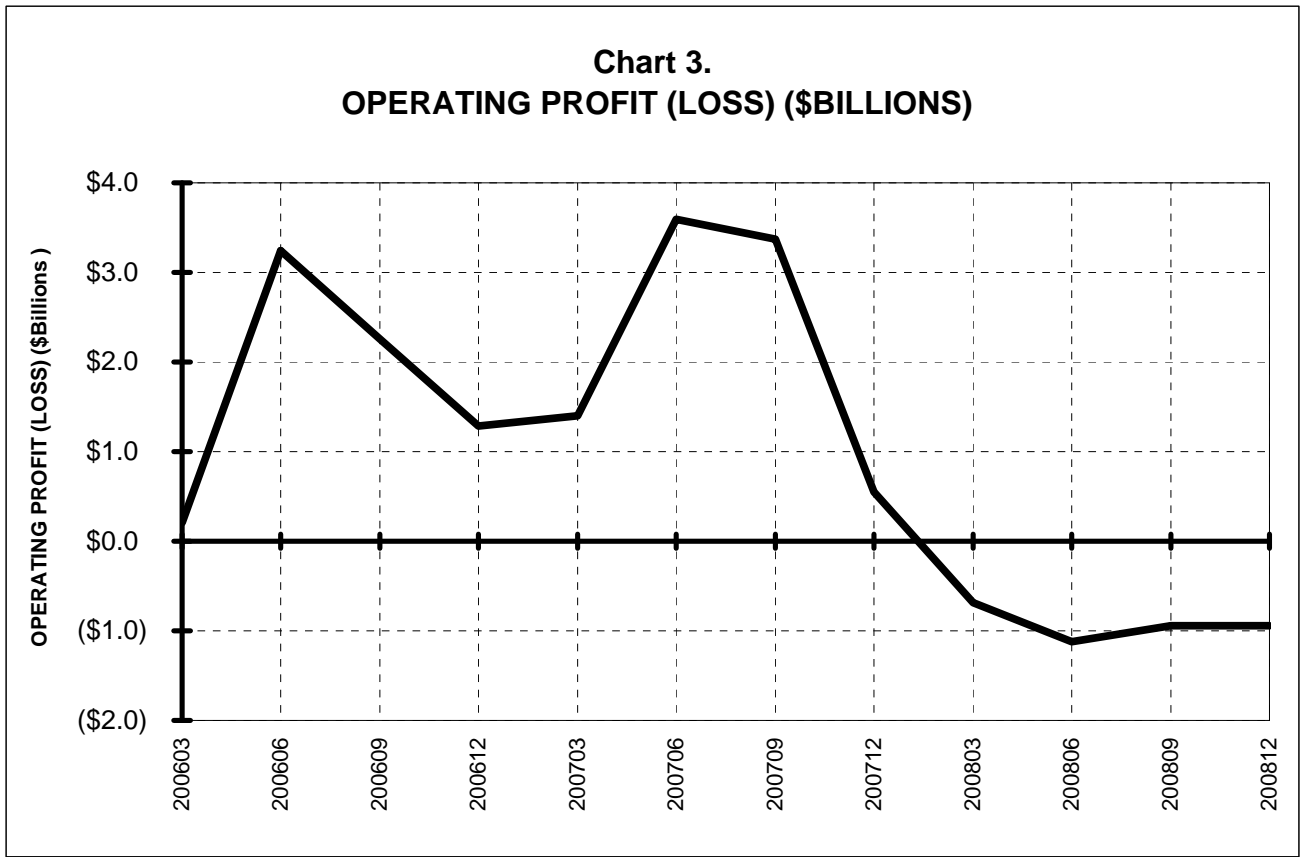
**Chart 1.**  
**Operating and Net Profit (Loss)**  
**For the Quarter Ended December 2008**



**Chart 2**  
**Operating and Net Profit (Loss)**  
**For the 12 Months Ended December 2008**



**TOTAL ALL MAJORS (SYSTEM)  
 BY QUARTER**

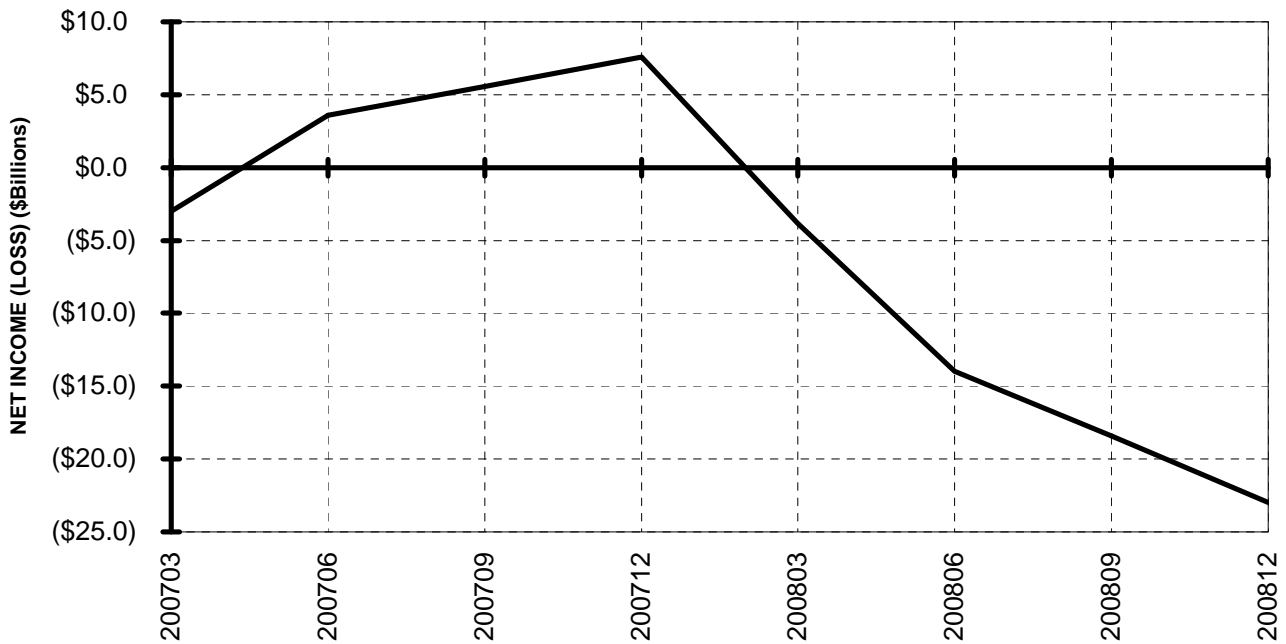


### TOTAL ALL MAJORS (SYSTEM) BY 12-MONTH ENDING PERIODS

**Chart 5.**  
**OPERATING PROFIT (LOSS) (\$BILLIONS)**

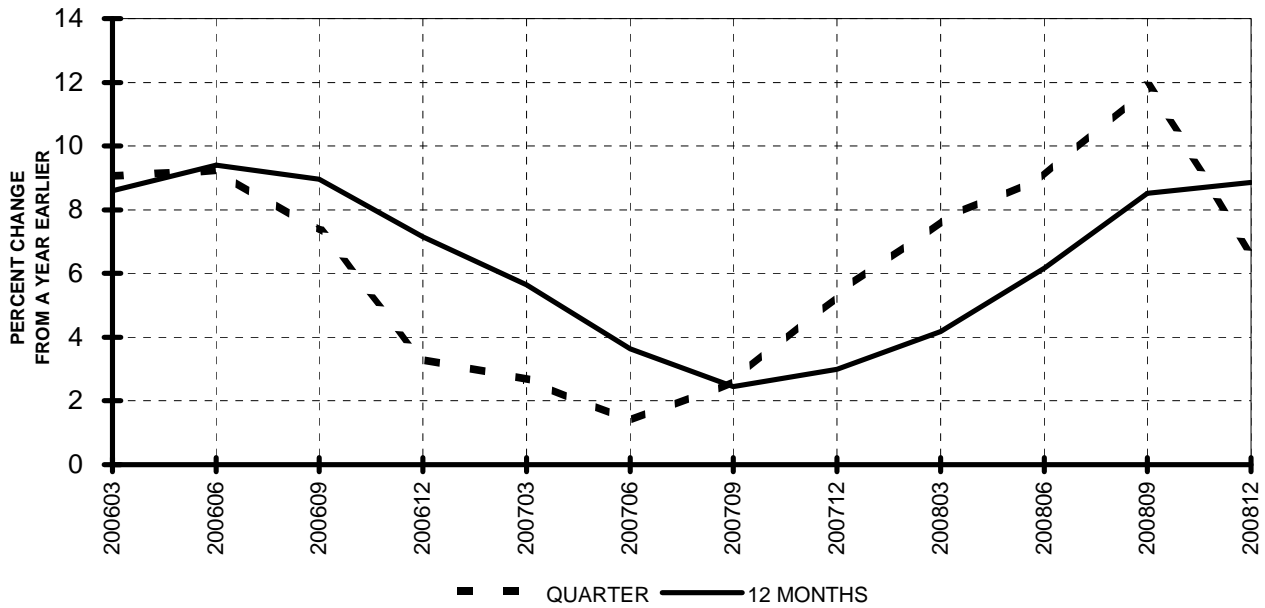


**Chart 6.**  
**NET INCOME (LOSS) (\$BILLIONS)**

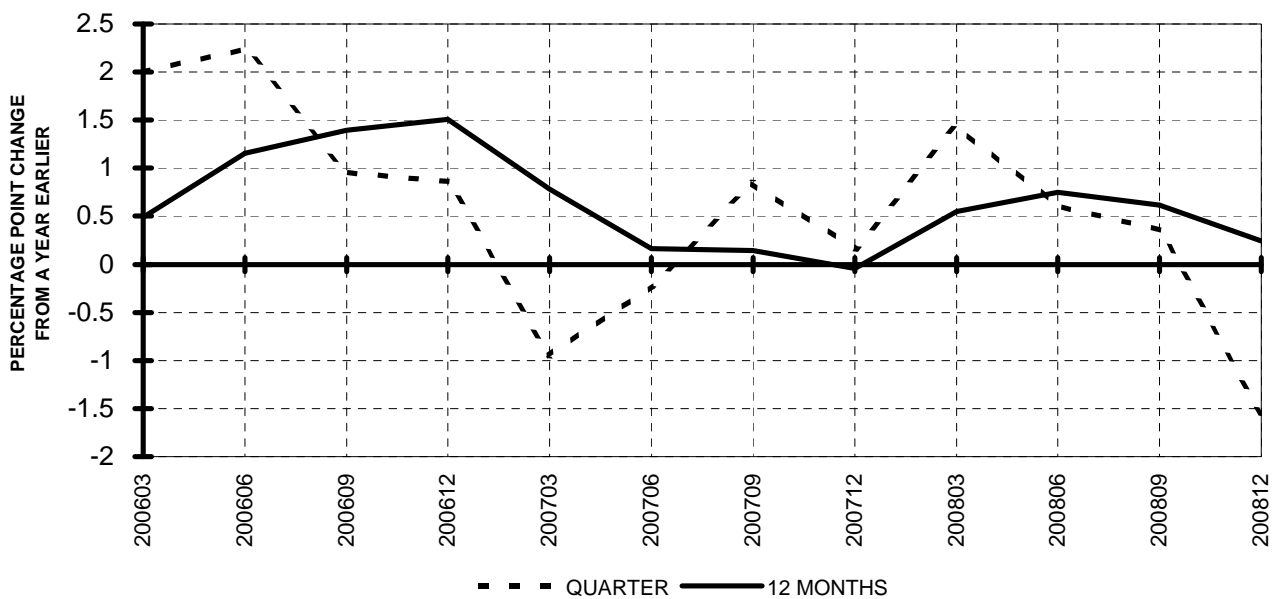


**TOTAL ALL MAJORS (SYSTEM)  
 QUARTERLY AND 12-MONTH BASIS**

**Chart 7.  
 OPERATING REVENUE PER REVENUE TON-MILE  
 PERCENT CHANGE FROM SAME PERIOD A YEAR EARLIER**

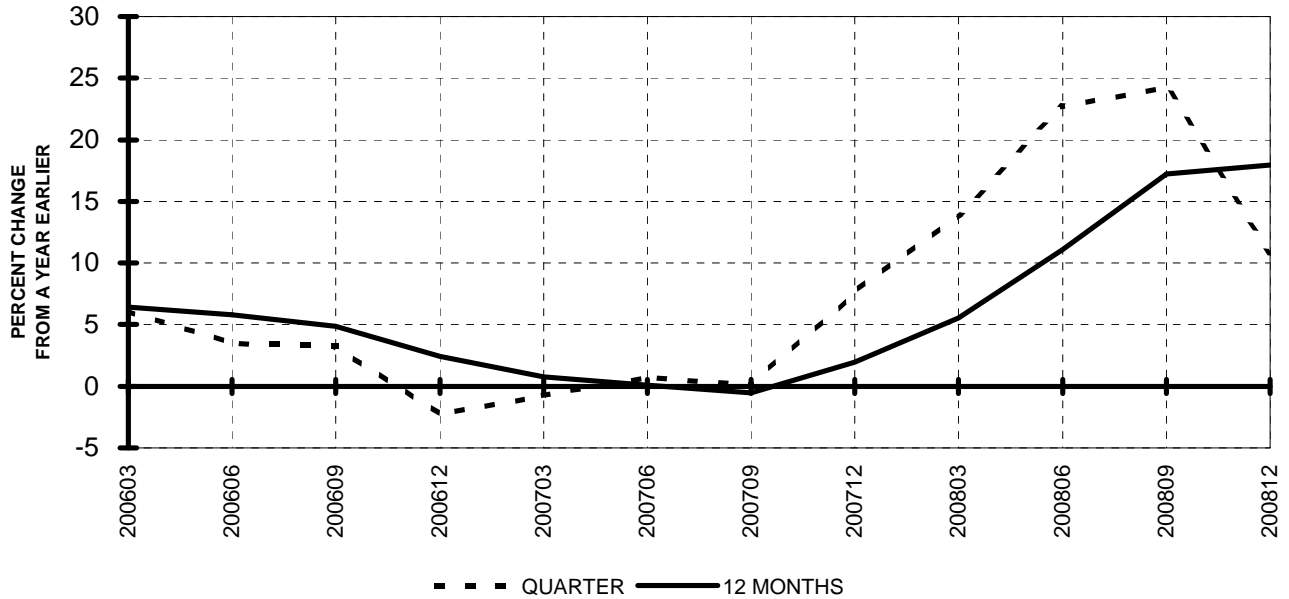


**Chart 8.  
 TON LOAD FACTOR PERCENTAGE POINT CHANGE  
 FROM SAME PERIOD A YEAR EARLIER**

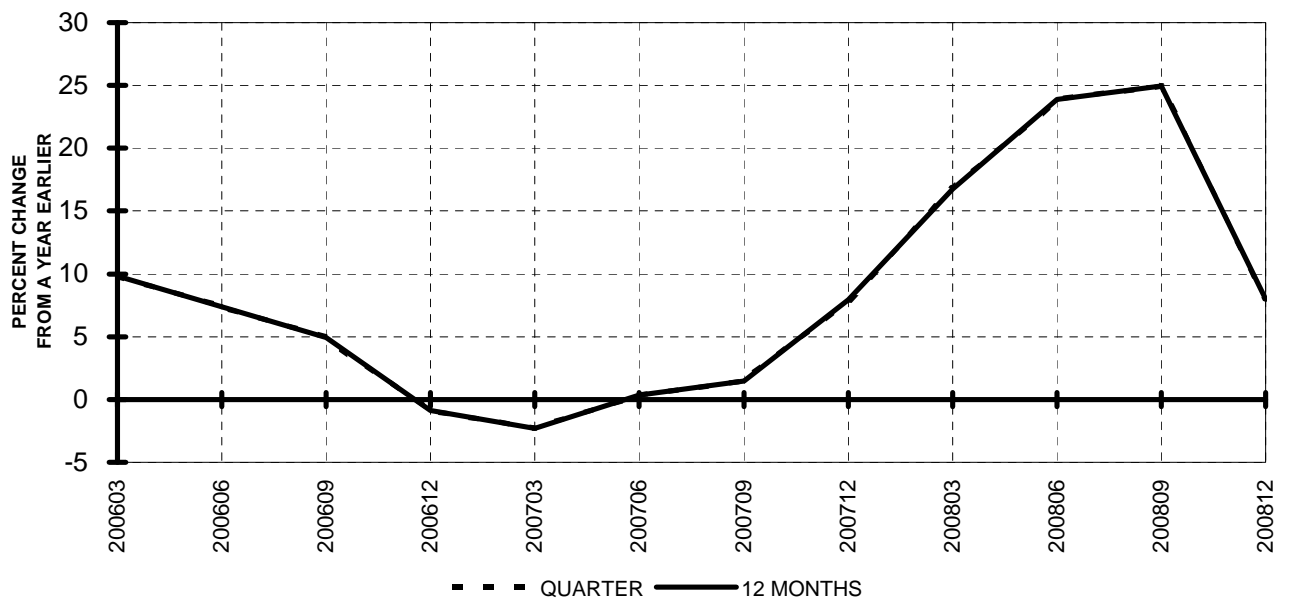


**TOTAL ALL MAJORS (SYSTEM)  
 QUARTERLY AND 12-MONTH BASIS**

**Chart 9.  
 OPERATING EXPENSE PER REVENUE TON-MILE  
 PERCENT CHANGE FROM SAME PERIOD A YEAR EARLIER**



**Chart 10.  
 OPERATING EXPENSE PER AVAILABLE TON-MILE  
 PERCENT CHANGE FROM SAME PERIOD A YEAR EARLIER**



## QUARTERLY FINANCIAL & TRAFFIC REVIEW

### SYSTEM OPERATIONS

#### System Passenger Majors

ITEMS	QUARTER ENDED		12 MONTHS ENDED				
	2008/12	2007/12	2008/12	2008/09	2008/06	2008/03	2007/12
<b>FINANCIAL RESULTS: (\$Millions)</b>							
1 Operating Revenues	31,310.1	32,173.5	137,433.9	138,297.3	134,794.8	131,972.4	128,859.9
2 Operating Expenses	32,736.2	32,199.6	143,194.8	142,658.2	134,780.7	127,355.1	122,205.7
3 Operating Profit (Loss)	-1,426.1	-26.1	-5,760.9	-4,360.9	14.0	4,617.4	6,654.2
4 Net Income (Loss)	-4,631.8	-334.5	-23,923.4	-19,626.1	-15,073.6	-5,059.3	6,417.4
<b>TRAFFIC: (Billions)</b>							
5 RPMs - Scheduled Svc.	170.3	183.9	748.9	762.6	762.8	763.6	758.9
6 ASMs - Scheduled Svc.	218.1	235.8	936.9	954.6	952.3	950.2	945.5
7 Overall RTMs (All Svc.)	18.9	20.8	83.3	85.2	85.3	85.3	84.8
8 Overall ATMs (All Svc.)	32.1	34.7	135.8	138.4	139.1	139.6	139.9
<b>YIELD &amp; UNIT COST &amp; PROFITS: (Cents)</b>							
9 Operating Revenue per RTM	165.5	154.8	165.0	162.4	158.0	154.7	152.0
10 Operating Expense per RTM	173.0	154.9	171.9	167.5	158.0	149.3	144.1
11 Operating Profit (Loss) per RTM	-7.5	-0.1	-6.9	-5.1	0.0	5.4	7.8
12 Operating Expense per ATM	102.0	92.7	105.5	103.1	96.9	91.2	87.4
13 Passenger Revenue per RPM	13.63	13.27	13.84	13.75	13.48	13.26	13.11
<b>FINANCIAL RATIOS:</b>							
14 Operating Revenues to Total Investment	*	*	1.78	1.68	1.61	1.69	1.79
15 Times Interest Earned	*	*	-6.84	-5.61	-3.93	-0.08	3.23
16 Current Assets to Current Liabilities	*	*	0.78	0.84	0.92	0.84	0.90
17 No. of Days Cash Coverage of Cash Exp.	*	*	49.9	67.3	85.9	75.7	82.1
<b>FINANCIAL PERCENTAGES:</b>							
18 Operating Profit (Loss) to Operating Revenue	-4.6	-0.1	-4.2	-3.2	0.0	3.5	5.2
19 Net Income to Stockholders Equity	*	*	-109.72	-72.02	-51.85	-21.13	35.23
20 Corporate Return on Investment	*	*	-26.8	-19.9	-14.2	-2.2	13.8
21 Debt to Total Investment	*	*	89.4	78.0	70.4	67.6	59.4
<b>PASSENGER LOAD FACTOR: (Sch. Svc. %)</b>							
22 Actual	78.1	78.0	79.9	79.9	80.1	80.4	80.3
23 Breakeven	87.1	81.7	88.4	87.0	83.9	80.4	78.5
<b>Employment &amp; Productivity:</b>							
24 Employment, Total Weighted Avg CY	359,711	381,331	373,503	378,909	377,577	376,384	373,755
25 Overall RTM's per Employee (000)	52.6	54.5	223.0	224.8	225.9	226.7	226.9

	CHANGE OVER COMPARABLE PERIOD 12 MONTHS EARLIER						
	2008/12	2007/12	2008/12	2008/09	2008/06	2008/03	2007/12
26 Operating Revenues (%)	-2.7	8.5	6.7	8.7	8.6	7.2	6.5
27 Operating Expenses (%)	1.7	11.3	17.2	19.0	14.5	8.8	5.2
28 Operating Profit (Loss) (in Millions \$)	-1,400.0	-749.5	-12,415.2	-11,724.2	-6,389.9	-1,474.6	1,837.5
29 Net Income (Loss)(in Millions \$)	-4,297.4	1,939.4	-30,340.8	-24,071.6	-17,434.0	-864.7	-8,823.9
30 RPMs (Sch. Svc.) (%)	-7.4	2.6	-1.3	0.3	2.4	3.1	3.9
31 ASMs (Sch. Svc.) (%)	-7.5	2.4	-0.9	0.8	1.9	2.2	3.1
32 Operating Revenues per RTM (%)	6.9	6.2	8.6	8.4	6.4	4.7	3.6
33 Operating Expense per RTM (%)	11.7	8.9	19.3	18.7	12.2	6.3	2.3
34 Passenger Revenue per RPM (Sch. Svc.)(%)	2.7	4.9	5.6	6.2	4.7	3.3	2.8

## QUARTERLY FINANCIAL & TRAFFIC REVIEW

### DOMESTIC OPERATIONS

#### Domestic Passenger Majors

ITEMS	QUARTER ENDED		12 MONTHS ENDED				
	2008/12	2007/12	2008/12	2008/09	2008/06	2008/03	2007/12
<b>FINANCIAL RESULTS: (\$Millions)</b>							
1 Operating Revenues	22,755.8	23,769.3	99,370.8	100,384.3	100,209.1	98,664.5	96,696.2
2 Operating Expenses	23,474.1	24,138.8	104,062.1	104,726.8	101,553.4	96,774.0	93,433.4
3 Operating Profit (Loss)	-718.3	-369.5	-4,691.3	-4,342.5	-1,344.3	1,890.5	3,262.8
4 Net Income (Loss)	-3,130.0	-616.8	-17,817.2	-15,304.0	-12,057.6	-6,638.0	2,589.4
<b>TRAFFIC: (Billions)</b>							
5 RPMs - Scheduled Svc.	119.2	131.2	524.1	536.1	550.1	554.0	552.9
6 ASMs - Scheduled Svc.	151.9	169.4	654.6	672.1	686.9	689.7	689.8
7 Overall RTMs (All Svc.)	12.4	13.7	54.4	55.7	57.2	57.6	57.5
8 Overall ATMs (All Svc.)	20.3	23.1	87.0	89.7	92.5	93.7	94.3
<b>YIELD &amp; UNIT COST &amp; PROFITS: (Cents)</b>							
9 Operating Revenue per RTM	184.0	173.6	182.7	180.2	175.3	171.4	168.3
10 Operating Expense per RTM	189.8	176.3	191.4	188.0	177.7	168.1	162.6
11 Operating Profit (Loss) per RTM	-5.8	-2.7	-8.6	-7.8	-2.4	3.3	5.7
12 Operating Expense per ATM	115.4	104.6	119.7	116.8	109.7	103.3	99.0
13 Passenger Revenue per RPM	13.77	13.53	13.98	13.92	13.62	13.40	13.24
<b>FINANCIAL RATIOS:</b>							
14 Operating Revenues to Total Investment	*	*	**	**	**	**	**
15 Times Interest Earned	*	*	**	**	**	**	**
16 Current Assets to Current Liabilities	*	*	**	**	**	**	**
17 No. of Days Cash Coverage of Cash Exp.	*	*	**	**	**	**	**
<b>FINANCIAL PERCENTAGES:</b>							
18 Operating Profit (Loss) to Operating Revenue	-3.2	-1.6	-4.7	-4.3	-1.3	1.9	3.4
19 Net Income to Stockholders Equity	*	*	**	**	**	**	**
20 Corporate Return on Investment	*	*	-25.9	-20.4	-14.3	-6.4	8.7
21 Debt to Total Investment	*	*	**	**	**	**	**
<b>PASSENGER LOAD FACTOR: (Sch. Svc. %)</b>							
22 Actual	78.5	77.5	80.1	79.8	80.1	80.3	80.2
23 Breakeven	86.3	82.9	89.5	88.5	85.7	82.5	80.7
<b>Employment &amp; Productivity:</b>							
24 Employment, Total Weighted Avg CY	*	*	**	**	**	**	**
25 Overall RTM's per Employee (000)	*	*	**	**	**	**	**

	CHANGE OVER COMPARABLE PERIOD 12 MONTHS EARLIER						
	2008/12	2007/12	2008/12	2008/09	2008/06	2008/03	2007/12
26 Operating Revenues (%)	-4.3	6.3	2.8	6.4	6.4	5.1	2.5
27 Operating Expenses (%)	-2.8	9.5	11.4	15.9	11.7	6.9	2.2
28 Operating Profit (Loss) (in Millions \$)	-348.8	-685.0	-7,954.1	-8,332.4	-4,624.6	-1,469.5	378.0
29 Net Income (Loss)(in Millions \$)	-2,513.2	1,357.8	-20,406.6	-16,569.6	-11,861.9	-2,459.8	-4,696.7
30 RPMs (Sch. Svc.) (%)	-9.2	0.7	-5.2	-1.8	0.6	1.8	0.8
31 ASMs (Sch. Svc.) (%)	-10.3	0.9	-5.1	-1.3	-0.1	0.5	-0.2
32 Operating Revenues per RTM (%)	6.0	5.7	8.6	8.4	6.1	3.7	2.5
33 Operating Expense per RTM (%)	7.7	8.9	17.7	18.1	11.4	5.5	2.1
34 Passenger Revenue per RPM (Sch. Svc.)(%)	1.8	4.2	5.6	5.9	4.0	2.1	1.4

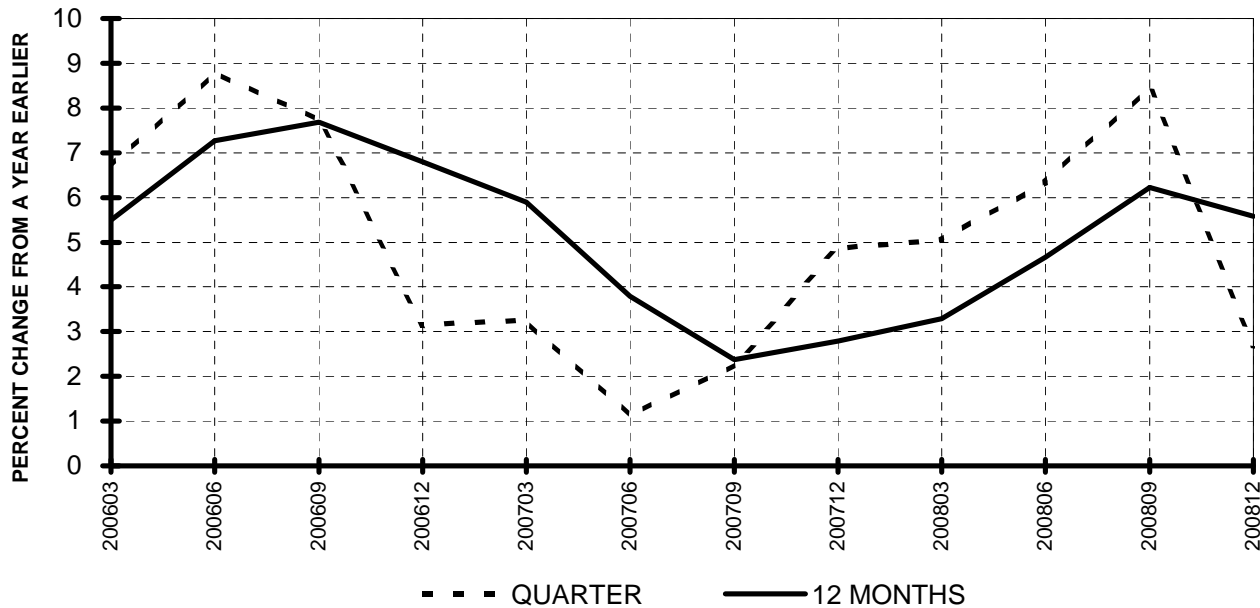
**QUARTERLY FINANCIAL & TRAFFIC REVIEW**  
**INTERNATIONAL OPERATIONS**  
**Int'l Passenger Majors**

ITEMS	QUARTER ENDED		12 MONTHS ENDED				
	2008/12	2007/12	2008/12	2008/09	2008/06	2008/03	2007/12
<u>FINANCIAL RESULTS: (\$Millions)</u>							
1 Operating Revenues	8,554.3	8,404.2	38,063.1	37,913.0	36,368.6	35,090.9	33,946.7
2 Operating Expenses	9,262.1	8,060.8	39,132.7	37,931.4	35,091.2	32,444.9	30,636.1
3 Operating Profit (Loss)	-707.8	343.4	-1,069.6	-18.4	1,277.4	2,646.0	3,310.6
4 Net Income (Loss)	-1,501.8	282.3	-6,106.3	-4,322.1	-3,080.8	1,513.9	3,763.2
<u>TRAFFIC: (Billions)</u>							
5 RPMs - Scheduled Svc.	51.0	52.7	224.8	226.4	224.3	221.1	217.7
6 ASMs - Scheduled Svc.	66.2	66.4	282.3	282.5	279.1	274.3	269.8
7 Overall RTMs (All Svc.)	6.6	7.1	28.9	29.5	29.3	28.9	28.5
8 Overall ATMs (All Svc.)	11.7	11.7	48.8	48.7	48.4	47.8	47.5
<u>YIELD &amp; UNIT COST &amp; PROFITS: (Cents)</u>							
9 Operating Revenue per RTM	130.5	118.5	131.6	128.7	124.1	121.4	119.0
10 Operating Expense per RTM	141.3	113.6	135.3	128.8	119.7	112.2	107.4
11 Operating Profit (Loss) per RTM	-10.8	4.8	-3.7	-0.1	4.4	9.2	11.6
12 Operating Expense per ATM	78.9	69.1	80.2	77.8	72.5	67.9	64.5
13 Passenger Revenue per RPM	13.30	12.64	13.51	13.36	12.99	12.79	12.64
<u>FINANCIAL RATIOS:</u>							
14 Operating Revenues to Total Investment	*	*	**	**	**	**	**
15 Times Interest Earned	*	*	**	**	**	**	**
16 Current Assets to Current Liabilities	*	*	**	**	**	**	**
17 No. of Days Cash Coverage of Cash Exp.	*	*	**	**	**	**	**
<u>FINANCIAL PERCENTAGES:</u>							
18 Operating Profit (Loss) to Operating Revenue	-8.3	4.1	-2.8	0.0	3.5	7.5	9.8
19 Net Income to Stockholders Equity	*	*	**	**	**	**	**
20 Corporate Return on Investment	*	*	-29.8	-18.3	-11.8	13.8	30.5
21 Debt to Total Investment	*	*	**	**	**	**	**
<u>PASSENGER LOAD FACTOR: (Sch. Svc. %)</u>							
22 Actual	77.1	79.3	79.6	80.1	80.4	80.6	80.7
23 Breakeven	89.0	78.3	85.7	83.3	79.7	75.7	73.5
<u>Employment &amp; Productivity:</u>							
24 Employment, Total Weighted Avg CY	*	*	**	**	**	**	**
25 Overall RTM's per Employee (000)	*	*	**	**	**	**	**

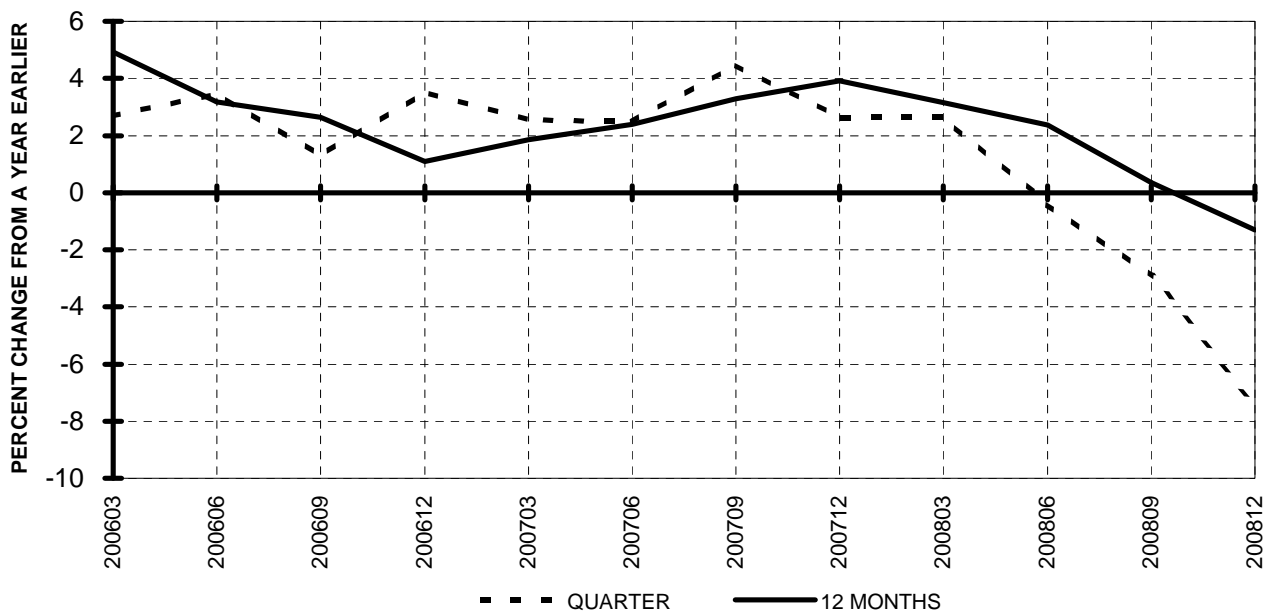
	CHANGE OVER COMPARABLE PERIOD 12 MONTHS EARLIER						
	2008/12	2007/12	2008/12	2008/09	2008/06	2008/03	2007/12
26 Operating Revenues (%)	1.8	15.3	12.1	15.4	14.1	12.7	11.9
27 Operating Expenses (%)	14.9	17.2	27.7	28.6	21.2	13.4	7.6
28 Operating Profit (Loss) (in Millions \$)	-1,051.2	-64.5	-4,380.2	-3,391.9	-1,632.5	127.7	1,426.6
29 Net Income (Loss)(in Millions \$)	-1,784.1	581.6	-9,869.4	-7,502.1	-5,436.7	1,730.6	-4,108.8
30 RPMs (Sch. Svc.) (%)	-3.1	7.3	3.2	5.7	6.5	6.0	6.0
31 ASMs (Sch. Svc.) (%)	-0.4	6.0	4.6	6.1	6.3	5.7	5.5
32 Operating Revenues per RTM (%)	10.2	9.4	10.6	10.4	8.7	8.3	7.9
33 Operating Expense per RTM (%)	24.4	11.2	26.0	23.1	15.4	9.0	3.9
34 Passenger Revenue per RPM (Sch. Svc.)(%)	5.2	7.5	6.9	7.4	6.3	6.7	7.2

**TOTAL PASSENGER MAJORS (SYSTEM)  
 QUARTERLY AND 12-MONTH BASIS (SCH. SVC.)**

**Chart 11  
 PASSENGER REVENUES PER REVENUE PASSENGER-MILE  
 PERCENT CHANGE FROM SAME PERIOD A YEAR EARLIER**

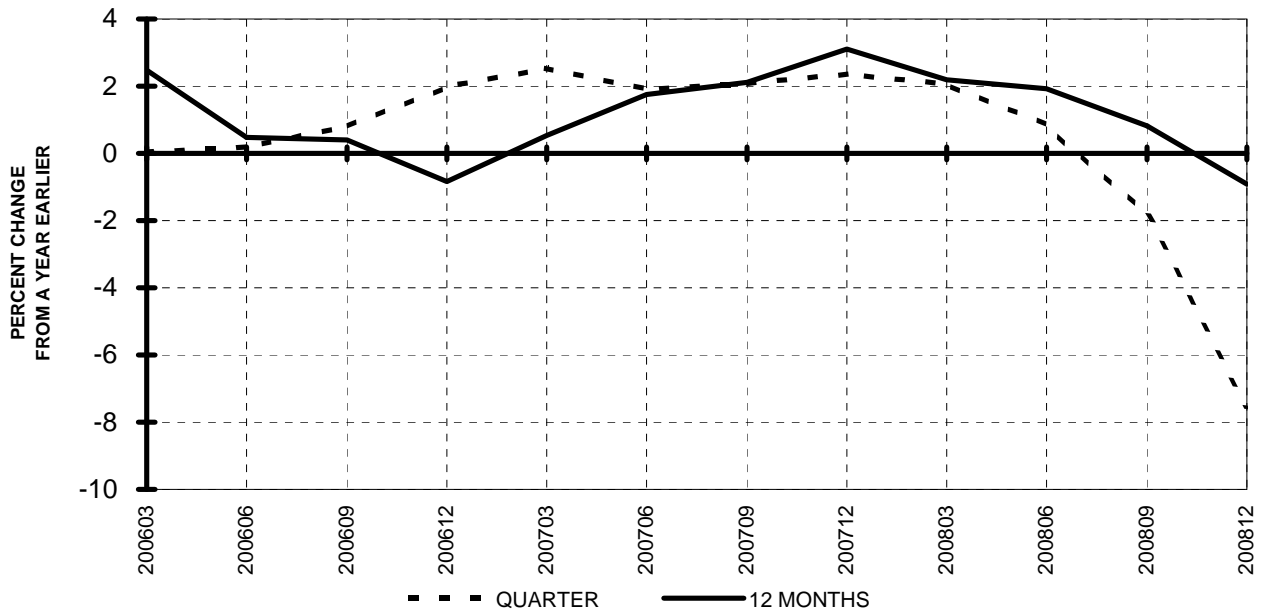


**Chart 12  
 REVENUE PASSENGER-MILES  
 PERCENT CHANGE FROM SAME PERIOD A EARLIER**

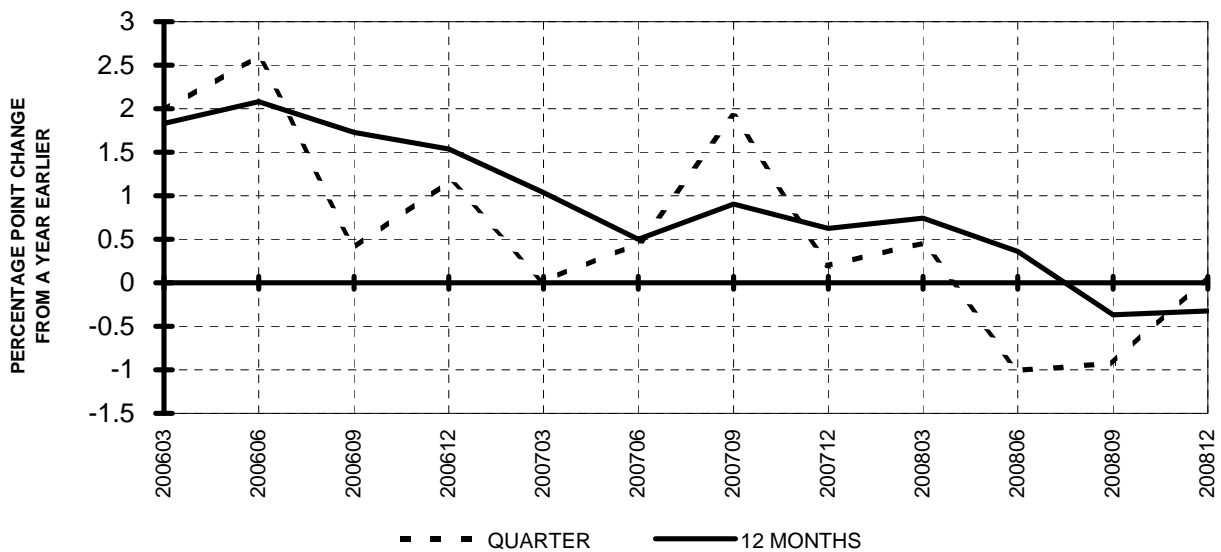


**TOTAL PASSENGER MAJORS (SYSTEM)  
 QUARTERLY AND 12-MONTH BASIS (SCH. SVC.)**

**Chart 13  
 AVAILABLE SEAT-MILES  
 PERCENT CHANGE FROM SAME PERIOD A YEAR EARLIER**

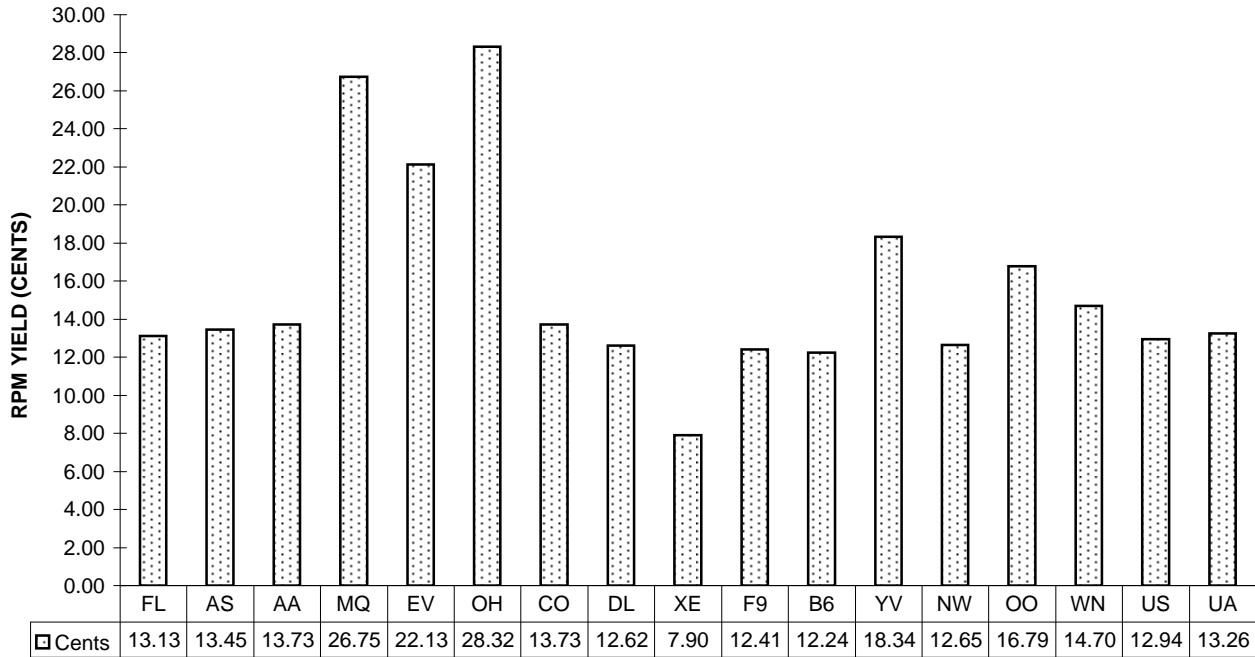


**Chart 14  
 PASSENGER LOAD FACTOR PERCENTAGE  
 POINT CHANGE FROM SAME PERIOD A YEAR EARLIER**

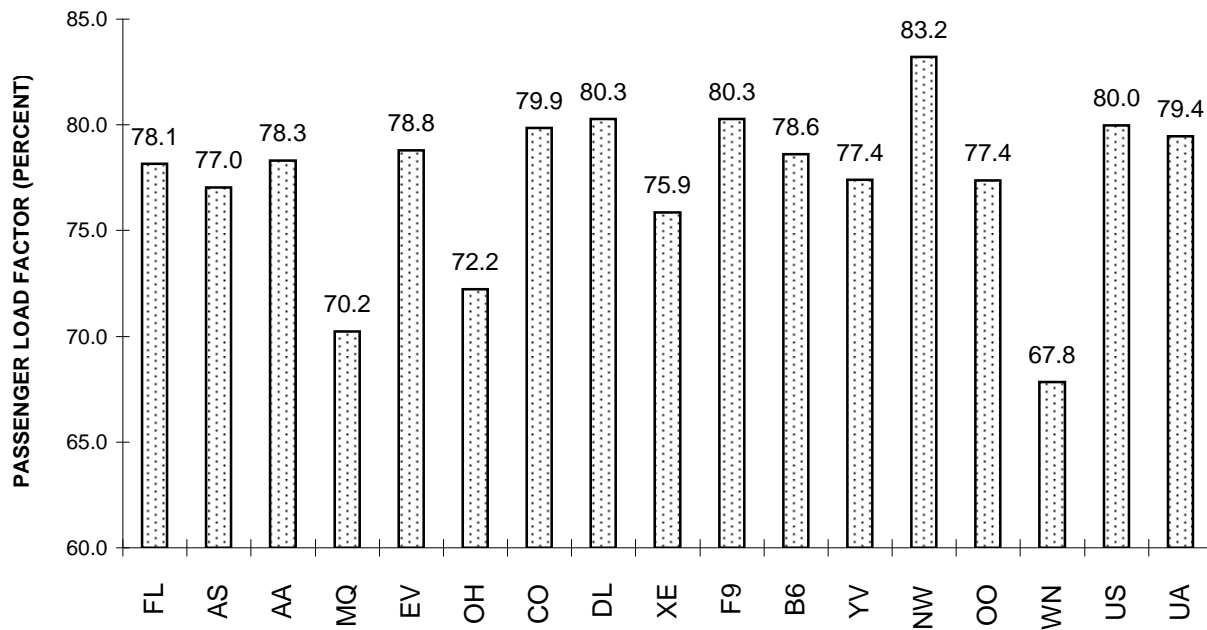


## TOTAL PASSENGER MAJORS (SYSTEM) FOURTH QUARTER 2008

**Chart 15  
 PASSENGER (RPM) YIELD**



**Chart 16  
 PASSENGER LOAD FACTOR**



## QUARTERLY FINANCIAL & TRAFFIC REVIEW

### SYSTEM OPERATIONS

#### AirTran Airways

ITEMS	QUARTER ENDED		12 MONTHS ENDED				
	2008/12	2007/12	2008/12	2008/09	2008/06	2008/03	2007/12
<u>FINANCIAL RESULTS: (\$Millions)</u>							
1 Operating Revenues	589.4	583.8	2,552.5	2,546.9	2,482.2	2,401.1	2,308.8
2 Operating Expenses	534.6	568.9	2,624.5	2,658.9	2,509.6	2,312.5	2,172.1
3 Operating Profit (Loss)	54.9	14.9	-72.0	-112.0	-27.4	88.6	136.8
4 Net Income (Loss)	-118.4	-2.2	-273.8	-157.6	-39.9	14.6	51.5
<u>TRAFFIC: (Billions)</u>							
5 RPMs - Scheduled Svc.	4.2	4.3	18.7	18.9	18.5	17.9	17.2
6 ASMs - Scheduled Svc.	5.3	5.7	23.8	24.1	24.0	23.3	22.7
7 Overall RTMs (All Svc.)	0.4	0.4	1.9	1.9	1.9	1.8	1.7
8 Overall ATMs (All Svc.)	0.6	0.7	2.8	2.8	2.8	2.7	2.6
<u>YIELD &amp; UNIT COST &amp; PROFITS: (Cents)</u>							
9 Operating Revenue per RTM	140.7	135.5	135.9	134.7	134.1	133.5	133.3
10 Operating Expense per RTM	127.6	132.1	139.7	140.6	135.5	128.6	125.4
11 Operating Profit (Loss) per RTM	13.1	3.5	-3.8	-5.9	-1.5	4.9	7.9
12 Operating Expense per ATM	86.4	86.0	95.3	95.1	90.7	86.1	83.1
13 Passenger Revenue per RPM	13.13	12.84	12.78	12.72	12.73	12.72	12.72
<u>FINANCIAL RATIOS:</u>							
14 Operating Revenues to Total Investment	*	*	1.67	1.63	1.59	1.63	1.64
15 Times Interest Earned	*	*	-3.13	-1.57	-0.57	1.39	2.24
16 Current Assets to Current Liabilities	*	*	0.82	0.92	1.09	0.84	0.94
17 No. of Days Cash Coverage of Cash Exp.	*	*	59.6	54.9	75.0	61.0	59.7
<u>FINANCIAL PERCENTAGES:</u>							
18 Operating Profit (Loss) to Operating Revenue	9.3	2.6	-2.8	-4.4	-1.1	3.7	5.9
19 Net Income to Stockholders Equity	*	*	-69.06	-36.11	-8.90	3.40	12.23
20 Corporate Return on Investment	*	*	-13.3	-5.6	-0.3	5.8	8.6
21 Debt to Total Investment	*	*	82.0	74.8	71.4	73.3	70.3
<u>PASSENGER LOAD FACTOR: (Sch. Svc. %)</u>							
22 Actual	78.1	75.1	78.9	78.2	77.1	77.1	76.0
23 Breakeven	69.5	72.8	81.5	82.2	78.1	73.8	70.7
<u>Employment &amp; Productivity:</u>							
24 Employment, Total Weighted Avg CY	7,387	8,165	7,906	8,101	8,181	8,106	8,003
25 Overall RTM's per Employee (000)	56.7	52.8	237.7	233.4	226.3	221.9	216.4

	CHANGE OVER COMPARABLE PERIOD 12 MONTHS EARLIER						
26 Operating Revenues (%)	1.0	26.4	10.6	16.5	20.2	21.2	22.0
27 Operating Expenses (%)	-6.0	23.8	20.8	28.9	26.5	20.8	17.3
28 Operating Profit (Loss) (in Millions \$)	40.0	12.4	-208.8	-236.3	-109.3	22.7	95.3
29 Net Income (Loss)(in Millions \$)	-116.2	1.2	-325.4	-208.0	-75.0	-11.7	36.4
30 RPMs (Sch. Svc.) (%)	-2.9	25.5	8.8	15.3	21.6	24.7	24.9
31 ASMs (Sch. Svc.) (%)	-6.7	15.2	4.7	10.1	14.7	17.0	19.5
32 Operating Revenues per RTM (%)	3.8	1.2	1.9	1.4	-0.8	-2.5	-2.2
33 Operating Expense per RTM (%)	-3.4	-0.9	11.4	12.2	4.4	-2.9	-5.9
34 Passenger Revenue per RPM (Sch. Svc.)(%)	2.2	0.4	0.4	0.1	-1.6	-3.1	-3.0

## QUARTERLY FINANCIAL & TRAFFIC REVIEW

### SYSTEM OPERATIONS

#### Alaska Airlines

ITEMS	QUARTER ENDED		12 MONTHS ENDED				
	2008/12	2007/12	2008/12	2008/09	2008/06	2008/03	2007/12
<b>FINANCIAL RESULTS: (\$Millions)</b>							
1 Operating Revenues	725.7	747.2	3,221.4	3,242.9	3,168.9	3,143.7	3,069.9
2 Operating Expenses	695.8	787.8	3,244.0	3,336.0	3,224.3	3,064.8	2,946.5
3 Operating Profit (Loss)	30.0	-40.6	-22.6	-93.1	-55.4	78.9	123.4
4 Net Income (Loss)	-57.7	11.4	-95.2	-26.1	120.9	114.8	135.5
<b>TRAFFIC: (Billions)</b>							
5 RPMs - Scheduled Svc.	4.3	4.5	18.7	18.9	19.0	18.9	18.5
6 ASMs - Scheduled Svc.	5.6	6.0	24.2	24.6	24.7	24.6	24.2
7 Overall RTMs (All Svc.)	0.4	0.5	1.9	2.0	2.0	2.0	1.9
8 Overall ATMs (All Svc.)	0.8	0.8	3.2	3.3	3.3	3.3	3.2
<b>YIELD &amp; UNIT COST &amp; PROFITS: (Cents)</b>							
9 Operating Revenue per RTM	164.0	161.7	167.1	166.5	162.3	161.3	161.2
10 Operating Expense per RTM	157.3	170.5	168.3	171.3	165.1	157.2	154.8
11 Operating Profit (Loss) per RTM	6.8	-8.8	-1.2	-4.8	-2.8	4.0	6.5
12 Operating Expense per ATM	92.7	98.8	100.3	101.7	98.4	94.2	92.2
13 Passenger Revenue per RPM	13.45	13.22	13.63	13.57	13.45	13.41	13.41
<b>FINANCIAL RATIOS:</b>							
14 Operating Revenues to Total Investment	*	*	1.44	1.47	1.50	1.56	1.59
15 Times Interest Earned	*	*	-1.03	0.37	3.96	3.82	4.46
16 Current Assets to Current Liabilities	*	*	1.21	1.14	1.09	1.07	1.10
17 No. of Days Cash Coverage of Cash Exp.	*	*	127.7	122.6	119.5	115.3	107.1
<b>FINANCIAL PERCENTAGES:</b>							
18 Operating Profit (Loss) to Operating Revenue	4.1	-5.4	-0.7	-2.9	-1.7	2.5	4.0
19 Net Income to Stockholders Equity	*	*	-11.66	-3.03	14.42	14.53	18.00
20 Corporate Return on Investment	*	*	-0.9	1.9	8.8	9.0	10.2
21 Debt to Total Investment	*	*	72.4	65.5	61.3	59.7	58.5
<b>PASSENGER LOAD FACTOR: (Sch. Svc. %)</b>							
22 Actual	77.0	74.7	77.3	76.7	76.8	76.9	76.2
23 Breakeven	77.1	95.0	85.7	89.8	90.0	88.2	85.9
<b>Employment &amp; Productivity:</b>							
24 Employment, Total Weighted Avg CY	9,681	9,849	9,914	9,956	9,919	9,779	9,641
25 Overall RTM's per Employee (000)	45.7	46.9	194.5	195.6	196.9	199.4	197.5

	CHANGE OVER COMPARABLE PERIOD 12 MONTHS EARLIER						
26 Operating Revenues (%)	-2.9	18.2	4.9	9.7	11.3	13.8	14.0
27 Operating Expenses (%)	-11.7	23.8	10.1	19.3	15.6	12.0	5.4
28 Operating Profit (Loss) (in Millions \$)	70.5	-36.3	-146.0	-252.7	-113.5	52.4	227.0
29 Net Income (Loss)(in Millions \$)	-69.1	20.1	-230.7	-141.5	103.3	98.1	191.6
30 RPMs (Sch. Svc.) (%)	-4.5	6.0	1.4	3.9	5.3	6.2	3.5
31 ASMs (Sch. Svc.) (%)	-7.4	4.6	-0.1	2.9	4.0	5.0	4.0
32 Operating Revenues per RTM (%)	1.4	12.0	3.6	5.9	6.1	7.6	10.6
33 Operating Expense per RTM (%)	-7.8	17.3	8.7	15.2	10.3	5.9	2.2
34 Passenger Revenue per RPM (Sch. Svc.)(%)	1.8	1.8	1.6	1.6	0.9	0.2	0.6

## QUARTERLY FINANCIAL & TRAFFIC REVIEW

### SYSTEM OPERATIONS

#### American Airlines

ITEMS	QUARTER ENDED		12 MONTHS ENDED				
	2008/12	2007/12	2008/12	2008/09	2008/06	2008/03	2007/12
<b>FINANCIAL RESULTS: (\$Millions)</b>							
1 Operating Revenues	5,466.6	5,656.2	23,696.1	23,885.8	23,405.2	23,103.4	22,832.8
2 Operating Expenses	5,680.2	5,795.8	25,750.4	25,865.9	24,853.0	22,818.9	22,130.7
3 Operating Profit (Loss)	-213.7	-139.6	-2,054.3	-1,980.2	-1,447.7	284.5	702.1
4 Net Income (Loss)	-327.9	-112.5	-2,530.8	-2,315.4	-1,772.6	-39.3	355.8
<b>TRAFFIC: (Billions)</b>							
5 RPMs - Scheduled Svc.	30.4	33.9	131.7	135.3	137.1	138.3	138.4
6 ASMs - Scheduled Svc.	38.8	42.3	163.5	167.0	168.3	169.2	169.9
7 Overall RTMs (All Svc.)	3.5	3.9	15.2	15.6	15.8	16.0	16.0
8 Overall ATMs (All Svc.)	6.1	6.6	25.6	26.2	26.4	26.6	26.7
<b>YIELD &amp; UNIT COST &amp; PROFITS: (Cents)</b>							
9 Operating Revenue per RTM	156.3	143.5	156.0	152.8	148.0	144.9	142.9
10 Operating Expense per RTM	162.4	147.0	169.5	165.5	157.1	143.1	138.5
11 Operating Profit (Loss) per RTM	-6.1	-3.5	-13.5	-12.7	-9.2	1.8	4.4
12 Operating Expense per ATM	93.2	87.5	100.5	98.9	94.2	85.8	82.9
13 Passenger Revenue per RPM	13.73	12.82	13.83	13.60	13.28	13.11	13.07
<b>FINANCIAL RATIOS:</b>							
14 Operating Revenues to Total Investment	*	*	3.23	2.86	2.71	2.65	2.64
15 Times Interest Earned	*	*	-5.08	-4.63	-3.32	0.91	1.80
16 Current Assets to Current Liabilities	*	*	0.51	0.67	0.77	0.73	0.75
17 No. of Days Cash Coverage of Cash Exp.	*	*	52.5	74.5	82.6	81.0	84.0
<b>FINANCIAL PERCENTAGES:</b>							
18 Operating Profit (Loss) to Operating Revenue	-3.9	-2.5	-8.7	-8.3	-6.2	1.2	3.1
19 Net Income to Stockholders Equity	*	*	&	&	-391.57	-19.12	&
20 Corporate Return on Investment	*	*	-28.8	-22.8	-15.8	4.5	9.3
21 Debt to Total Investment	*	*	253.7	114.5	94.8	85.9	84.4
<b>PASSENGER LOAD FACTOR: (Sch. Svc. %)</b>							
22 Actual	78.3	80.2	80.6	81.0	81.4	81.7	81.5
23 Breakeven	90.7	90.5	98.1	98.0	95.7	86.8	83.8
<b>Employment &amp; Productivity:</b>							
24 Employment, Total Weighted Avg CY	70,212	73,257	72,153	72,914	73,164	73,155	73,060
25 Overall RTM's per Employee (000)	49.8	53.8	210.5	214.4	216.2	218.0	218.6

	CHANGE OVER COMPARABLE PERIOD 12 MONTHS EARLIER						
26 Operating Revenues (%)	-3.4	5.2	3.8	5.9	4.2	2.4	1.5
27 Operating Expenses (%)	-2.0	10.3	16.4	19.8	15.4	5.5	2.1
28 Operating Profit (Loss) (in Millions \$)	-74.1	-264.1	-2,756.4	-2,946.4	-2,368.4	-662.1	-113.5
29 Net Income (Loss)(in Millions \$)	-215.4	-102.1	-2,886.5	-2,773.2	-2,084.6	-360.2	191.9
30 RPMs (Sch. Svc.) (%)	-10.5	2.2	-4.8	-1.8	-0.5	-0.5	-0.7
31 ASMs (Sch. Svc.) (%)	-8.3	0.4	-3.8	-1.6	-1.6	-2.1	-2.3
32 Operating Revenues per RTM (%)	8.9	4.2	9.1	8.0	5.3	3.6	2.8
33 Operating Expense per RTM (%)	10.4	9.3	22.4	22.1	16.6	6.8	3.4
34 Passenger Revenue per RPM (Sch. Svc.)(%)	7.0	0.5	5.8	4.2	2.3	1.7	2.1

## QUARTERLY FINANCIAL & TRAFFIC REVIEW

### SYSTEM OPERATIONS

#### American Eagle Airlines

ITEMS	QUARTER ENDED		12 MONTHS ENDED				
	2008/12	2007/12	2008/12	2008/09	2008/06	2008/03	2007/12
<b>FINANCIAL RESULTS: (\$Millions)</b>							
1 Operating Revenues	452.9	519.0	2,224.1	2,290.3	2,213.0	2,046.4	2,016.2
2 Operating Expenses	440.6	472.8	2,137.6	2,169.8	2,090.6	1,893.6	1,830.4
3 Operating Profit (Loss)	12.3	46.2	86.5	120.4	122.4	152.8	185.7
4 Net Income (Loss)	-30.5	13.4	-55.6	-11.8	-7.2	14.5	35.3
<b>TRAFFIC: (Billions)</b>							
5 RPMs - Scheduled Svc.	1.7	2.0	7.4	7.7	8.0	8.2	8.3
6 ASMs - Scheduled Svc.	2.4	2.8	10.4	10.8	10.9	11.0	11.2
7 Overall RTMs (All Svc.)	0.2	0.2	0.7	0.8	0.8	0.8	0.8
8 Overall ATMs (All Svc.)	0.3	0.3	1.3	1.3	1.3	1.3	1.4
<b>YIELD &amp; UNIT COST &amp; PROFITS: (Cents)</b>							
9 Operating Revenue per RTM	271.5	257.4	301.1	296.1	275.7	248.9	241.7
10 Operating Expense per RTM	264.1	234.5	289.4	280.5	260.5	230.3	219.4
11 Operating Profit (Loss) per RTM	7.4	22.9	11.7	15.6	15.3	18.6	22.3
12 Operating Expense per ATM	154.1	141.9	171.4	167.6	159.4	142.8	135.8
13 Passenger Revenue per RPM	26.75	25.69	29.84	29.43	27.44	24.80	24.10
<b>FINANCIAL RATIOS:</b>							
14 Operating Revenues to Total Investment	*	*	0.61	0.62	0.59	0.54	0.52
15 Times Interest Earned	*	*	0.42	0.76	0.81	1.02	1.21
16 Current Assets to Current Liabilities	*	*	0.94	0.94	1.07	0.42	0.61
17 No. of Days Cash Coverage of Cash Exp.	*	*	0.6	0.5	0.4	0.2	0.2
<b>FINANCIAL PERCENTAGES:</b>							
18 Operating Profit (Loss) to Operating Revenue	2.7	8.9	3.9	5.3	5.5	7.5	9.2
19 Net Income to Stockholders Equity	*	*	-20.37	-4.23	-2.54	5.13	12.75
20 Corporate Return on Investment	*	*	1.6	2.8	3.0	3.6	4.1
21 Debt to Total Investment	*	*	92.7	92.7	92.7	92.3	92.1
<b>PASSENGER LOAD FACTOR: (Sch. Svc. %)</b>							
22 Actual	70.2	72.8	71.2	71.8	73.6	74.5	74.4
23 Breakeven	68.1	65.5	68.1	67.6	69.0	68.3	66.8
<b>Employment &amp; Productivity:</b>							
24 Employment, Total Weighted Avg CY	9,311	9,692	9,565	9,660	9,654	9,589	9,509
25 Overall RTM's per Employee (000)	17.9	20.8	77.2	80.1	83.1	85.8	87.7

CHANGE OVER COMPARABLE PERIOD 12 MONTHS EARLIER							
26 Operating Revenues (%)	-12.8	10.4	10.3	16.4	12.8	6.1	5.5
27 Operating Expenses (%)	-6.8	11.9	16.8	21.9	18.9	8.8	6.1
28 Operating Profit (Loss) (in Millions \$)	-33.9	-1.5	-99.2	-66.8	-80.4	-35.9	-0.2
29 Net Income (Loss)(in Millions \$)	-43.9	8.4	-90.9	-38.6	-34.7	3.9	29.7
30 RPMs (Sch. Svc.) (%)	-17.3	-3.5	-11.5	-8.1	-4.2	-2.2	-1.0
31 ASMs (Sch. Svc.) (%)	-14.3	-2.7	-7.5	-4.6	-3.4	-2.5	-0.8
32 Operating Revenues per RTM (%)	5.5	14.4	24.6	26.7	17.8	8.6	6.5
33 Operating Expense per RTM (%)	12.6	16.0	31.9	32.6	24.1	11.3	7.1
34 Passenger Revenue per RPM (Sch. Svc.)(%)	4.1	14.4	23.8	26.2	17.4	8.4	6.3

## QUARTERLY FINANCIAL & TRAFFIC REVIEW

### SYSTEM OPERATIONS

#### Atlantic Southeast Airlines

ITEMS	QUARTER ENDED		12 MONTHS ENDED				
	2008/12	2007/12	2008/12	2008/09	2008/06	2008/03	2007/12
<b>FINANCIAL RESULTS: (\$Millions)</b>							
1 Operating Revenues	298.5	351.8	1,463.9	1,517.1	1,469.2	1,396.7	1,370.4
2 Operating Expenses	275.8	314.8	1,355.7	1,394.7	1,331.5	1,251.7	1,211.8
3 Operating Profit (Loss)	22.7	37.0	108.2	122.4	137.7	145.0	158.5
4 Net Income (Loss)	7.4	14.4	40.4	47.5	55.0	56.0	62.4
<b>TRAFFIC: (Billions)</b>							
5 RPMs - Scheduled Svc.	1.4	1.5	6.0	6.1	6.2	6.2	6.2
6 ASMs - Scheduled Svc.	1.7	2.0	7.5	7.8	7.9	8.0	8.1
7 Overall RTMs (All Svc.)	0.1	0.2	0.6	0.6	0.6	0.6	0.6
8 Overall ATMs (All Svc.)	0.2	0.2	0.8	0.8	0.8	0.8	0.8
<b>YIELD &amp; UNIT COST &amp; PROFITS: (Cents)</b>							
9 Operating Revenue per RTM	221.7	229.4	246.0	247.2	236.7	224.5	221.6
10 Operating Expense per RTM	204.8	205.3	227.8	227.3	214.5	201.2	195.9
11 Operating Profit (Loss) per RTM	16.9	24.1	18.2	20.0	22.2	23.3	25.6
12 Operating Expense per ATM	161.4	155.4	181.8	179.4	167.8	155.7	150.1
13 Passenger Revenue per RPM	22.13	22.88	24.55	24.66	23.60	22.37	22.06
<b>FINANCIAL RATIOS:</b>							
14 Operating Revenues to Total Investment	*	*	0.87	0.90	0.87	0.83	0.82
15 Times Interest Earned	*	*	2.17	2.30	2.37	2.34	2.48
16 Current Assets to Current Liabilities	*	*	3.26	2.98	2.67	2.66	2.78
17 No. of Days Cash Coverage of Cash Exp.	*	*	84.3	74.9	78.1	79.2	77.2
<b>FINANCIAL PERCENTAGES:</b>							
18 Operating Profit (Loss) to Operating Revenue	7.6	10.5	7.4	8.1	9.4	10.4	11.6
19 Net Income to Stockholders Equity	*	*	6.77	8.12	9.63	10.07	11.56
20 Corporate Return on Investment	*	*	5.6	6.3	7.0	7.3	7.8
21 Debt to Total Investment	*	*	62.9	63.7	64.5	65.5	66.3
<b>PASSENGER LOAD FACTOR: (Sch. Svc. %)</b>							
22 Actual	78.8	75.7	79.8	78.9	78.2	77.4	76.6
23 Breakeven	72.3	67.1	73.4	72.0	70.3	68.8	67.1
<b>Employment &amp; Productivity:</b>							
24 Employment, Total Weighted Avg CY	4,349	4,317	4,442	4,434	4,406	4,568	4,909
25 Overall RTM's per Employee (000)	31.0	35.5	134.0	138.4	140.9	136.2	126.0

CHANGE OVER COMPARABLE PERIOD 12 MONTHS EARLIER							
26 Operating Revenues (%)	-15.1	9.9	6.8	13.3	11.5	7.7	7.0
27 Operating Expenses (%)	-12.4	13.2	11.9	18.7	15.3	10.7	8.8
28 Operating Profit (Loss) (in Millions \$)	-14.3	-5.0	-50.4	-41.1	-25.8	-21.4	-7.8
29 Net Income (Loss)(in Millions \$)	-7.1	-0.2	-22.0	-15.2	-7.4	-5.0	3.4
30 RPMs (Sch. Svc.) (%)	-12.2	3.4	-3.8	0.0	0.9	0.7	-1.5
31 ASMs (Sch. Svc.) (%)	-15.6	1.2	-7.6	-3.4	-2.5	-1.1	-1.0
32 Operating Revenues per RTM (%)	-3.4	6.4	11.0	13.3	10.5	7.0	8.8
33 Operating Expense per RTM (%)	-0.2	9.5	16.3	18.7	14.3	10.0	10.5
34 Passenger Revenue per RPM (Sch. Svc.)(%)	-3.3	6.0	11.3	13.5	10.5	6.7	8.1

## QUARTERLY FINANCIAL & TRAFFIC REVIEW

### SYSTEM OPERATIONS

#### Comair

ITEMS	QUARTER ENDED		12 MONTHS ENDED				
	2008/12	2007/12	2008/12	2008/09	2008/06	2008/03	2007/12
<b>FINANCIAL RESULTS: (\$Millions)</b>							
1 Operating Revenues	254.9	311.4	1,286.1	1,342.6	1,300.2	1,223.0	1,164.7
2 Operating Expenses	236.8	285.9	1,177.1	1,226.2	1,197.5	1,135.4	1,096.2
3 Operating Profit (Loss)	18.0	25.5	109.0	116.4	102.6	87.6	68.5
4 Net Income (Loss)	-5.5	10.7	32.9	49.2	46.5	-150.3	-237.9
<b>TRAFFIC: (Billions)</b>							
5 RPMs - Scheduled Svc.	0.8	1.2	4.1	4.4	4.6	4.6	4.6
6 ASMs - Scheduled Svc.	1.2	1.6	5.5	5.9	6.1	6.1	6.1
7 Overall RTMs (All Svc.)	0.1	0.1	0.4	0.4	0.5	0.5	0.5
8 Overall ATMs (All Svc.)	0.2	0.2	0.7	0.7	0.8	0.8	0.8
<b>YIELD &amp; UNIT COST &amp; PROFITS: (Cents)</b>							
9 Operating Revenue per RTM	304.2	270.7	311.0	301.9	283.2	264.5	252.7
10 Operating Expense per RTM	282.7	248.6	284.7	275.7	260.9	245.5	237.8
11 Operating Profit (Loss) per RTM	21.5	22.1	26.4	26.2	22.4	18.9	14.9
12 Operating Expense per ATM	162.8	147.4	169.3	164.9	157.1	148.3	142.5
13 Passenger Revenue per RPM	28.32	27.09	29.85	29.42	27.96	26.47	25.29
<b>FINANCIAL RATIOS:</b>							
14 Operating Revenues to Total Investment	*	*	1.07	1.13	1.11	1.14	1.20
15 Times Interest Earned	*	*	2.77	3.26	2.98	-7.88	-10.18
16 Current Assets to Current Liabilities	*	*	0.62	0.50	0.60	0.60	0.57
17 No. of Days Cash Coverage of Cash Exp.	*	*	43.3	38.7	36.4	43.1	43.4
<b>FINANCIAL PERCENTAGES:</b>							
18 Operating Profit (Loss) to Operating Revenue	7.1	8.2	8.5	8.7	7.9	7.2	5.9
19 Net Income to Stockholders Equity	*	*	5.7	8.9	8.6	-30.9	-53.0
20 Corporate Return on Investment	*	*	5.36	7.14	6.97	-10.40	-20.05
21 Debt to Total Investment	*	*	48.8	52.0	52.8	52.1	55.0
<b>PASSENGER LOAD FACTOR: (Sch. Svc. %)</b>							
22 Actual	72.2	74.3	74.6	75.0	75.5	75.7	75.2
23 Breakeven	66.1	67.6	67.2	67.5	68.8	69.7	70.3
<b>Employment &amp; Productivity:</b>							
24 Employment, Total Weighted Avg CY	5,437	6,257	5,836	6,041	6,102	6,162	6,183
25 Overall RTM's per Employee (000)	15.4	18.4	70.9	73.6	75.2	75.1	74.6

CHANGE OVER COMPARABLE PERIOD 12 MONTHS EARLIER							
26 Operating Revenues (%)	-18.1	10.0	10.4	18.1	10.8	2.4	-3.1
27 Operating Expenses (%)	-17.2	5.9	7.4	13.5	7.8	-0.9	-5.1
28 Operating Profit (Loss) (in Millions \$)	-7.4	12.4	40.5	60.3	40.4	38.8	22.3
29 Net Income (Loss)(in Millions \$)	-16.3	240.9	270.8	527.9	503.9	215.9	54.2
30 RPMs (Sch. Svc.) (%)	-27.1	-8.0	-10.3	-5.6	-7.3	-10.2	-12.9
31 ASMs (Sch. Svc.) (%)	-25.0	-7.8	-9.5	-5.2	-8.5	-12.1	-13.9
32 Operating Revenues per RTM (%)	12.4	19.5	23.1	25.1	19.5	14.0	11.6
33 Operating Expense per RTM (%)	13.7	15.0	19.7	20.2	16.3	10.3	9.3
34 Passenger Revenue per RPM (Sch. Svc.)(%)	4.5	19.5	18.0	21.8	17.9	14.0	11.3

## QUARTERLY FINANCIAL & TRAFFIC REVIEW

### SYSTEM OPERATIONS

### Continental Air Lines

ITEMS	QUARTER ENDED		12 MONTHS ENDED				
	2008/12	2007/12	2008/12	2008/09	2008/06	2008/03	2007/12
<b>FINANCIAL RESULTS: (\$Millions)</b>							
1 Operating Revenues	3,414.9	3,490.2	15,032.9	15,108.2	14,804.7	14,474.0	14,105.4
2 Operating Expenses	3,450.0	3,421.6	15,410.6	15,382.3	14,658.8	13,993.4	13,484.4
3 Operating Profit (Loss)	-35.1	68.6	-377.7	-274.1	145.9	480.6	620.9
4 Net Income (Loss)	-266.0	-31.9	-584.9	-350.9	126.7	358.4	459.5
<b>TRAFFIC: (Billions)</b>							
5 RPMs - Scheduled Svc.	18.1	19.6	80.4	81.9	82.3	82.2	81.4
6 ASMs - Scheduled Svc.	22.6	24.4	99.1	100.8	100.9	100.2	99.1
7 Overall RTMs (All Svc.)	2.0	2.2	9.0	9.2	9.2	9.2	9.1
8 Overall ATMs (All Svc.)	3.2	2.7	11.8	11.3	11.3	11.3	11.6
<b>YIELD &amp; UNIT COST &amp; PROFITS: (Cents)</b>							
9 Operating Revenue per RTM	168.0	157.3	167.0	164.5	160.4	157.2	154.8
10 Operating Expense per RTM	169.7	154.2	171.2	167.4	158.9	152.0	147.9
11 Operating Profit (Loss) per RTM	-1.7	3.1	-4.2	-3.0	1.6	5.2	6.8
12 Operating Expense per ATM	109.5	126.4	130.8	135.7	129.2	124.4	116.7
13 Passenger Revenue per RPM	13.73	12.97	13.62	13.44	13.12	12.93	12.73
<b>FINANCIAL RATIOS:</b>							
14 Operating Revenues to Total Investment	*	*	2.29	2.29	2.30	2.37	2.38
15 Times Interest Earned	*	*	-1.12	-0.12	1.34	2.13	2.53
16 Current Assets to Current Liabilities	*	*	0.87	0.87	1.01	0.85	0.92
17 No. of Days Cash Coverage of Cash Exp.	*	*	64.6	72.0	89.1	71.0	83.0
<b>FINANCIAL PERCENTAGES:</b>							
18 Operating Profit (Loss) to Operating Revenue	-1.0	2.0	-2.5	-1.8	1.0	3.3	4.4
19 Net Income to Stockholders Equity	*	*	-47.44	-24.32	8.96	30.14	47.73
20 Corporate Return on Investment	*	*	-3.9	-0.3	7.2	11.5	13.8
21 Debt to Total Investment	*	*	97.3	83.3	75.9	76.6	75.0
<b>PASSENGER LOAD FACTOR: (Sch. Svc. %)</b>							
22 Actual	79.9	80.0	81.2	81.2	81.6	82.1	82.2
23 Breakeven	84.0	81.1	87.3	86.6	84.1	82.0	80.9
<b>Employment &amp; Productivity:</b>							
24 Employment, Total Weighted Avg CY	34,537	36,014	35,794	36,163	36,203	35,989	35,644
25 Overall RTM's per Employee (000)	58.9	61.6	251.4	254.0	254.9	255.8	255.7

	CHANGE OVER COMPARABLE PERIOD 12 MONTHS EARLIER						
26 Operating Revenues (%)	-2.2	11.4	6.6	9.9	10.1	9.3	8.4
27 Operating Expenses (%)	0.8	9.4	14.3	16.6	13.0	9.5	7.0
28 Operating Profit (Loss) (in Millions \$)	-103.6	62.9	-998.6	-832.1	-332.0	22.0	210.5
29 Net Income (Loss)(in Millions \$)	-234.0	-5.5	-1,044.4	-815.9	-333.7	-72.0	116.2
30 RPMs (Sch. Svc.) (%)	-7.6	5.6	-1.2	1.9	4.5	6.3	6.7
31 ASMs (Sch. Svc.) (%)	-7.4	6.3	0.0	3.3	4.9	5.9	5.9
32 Operating Revenues per RTM (%)	6.8	6.4	7.9	7.8	5.9	3.8	2.7
33 Operating Expense per RTM (%)	10.1	4.5	15.7	14.4	8.7	3.9	1.4
34 Passenger Revenue per RPM (Sch. Svc.)(%)	5.9	7.9	7.1	7.5	6.1	5.0	4.3

## QUARTERLY FINANCIAL & TRAFFIC REVIEW

### SYSTEM OPERATIONS

#### Delta Air Lines

ITEMS	QUARTER ENDED		12 MONTHS ENDED				
	2008/12	2007/12	2008/12	2008/09	2008/06	2008/03	2007/12
<b>FINANCIAL RESULTS: (\$Millions)</b>							
1 Operating Revenues	4,848.2	4,723.6	20,972.6	20,848.0	20,361.1	19,860.6	19,238.8
2 Operating Expenses	4,904.0	4,758.4	20,916.8	20,771.2	19,987.1	19,177.6	18,234.0
3 Operating Profit (Loss)	-55.7	-34.8	55.8	76.7	374.0	683.0	1,004.8
4 Net Income (Loss)	-896.0	-108.3	-8,432.7	-7,644.9	-7,378.3	-4,548.9	1,794.3
<b>TRAFFIC: (Billions)</b>							
5 RPMs - Scheduled Svc.	24.8	24.6	105.6	105.4	104.9	104.1	103.3
6 ASMs - Scheduled Svc.	30.8	31.2	128.6	129.0	128.8	128.0	127.3
7 Overall RTMs (All Svc.)	2.8	2.8	11.8	11.8	11.7	11.6	11.5
8 Overall ATMs (All Svc.)	4.8	4.8	19.8	19.9	19.9	19.8	19.7
<b>YIELD &amp; UNIT COST &amp; PROFITS: (Cents)</b>							
9 Operating Revenue per RTM	174.7	170.6	177.9	177.0	174.1	171.5	167.7
10 Operating Expense per RTM	176.7	171.9	177.5	176.3	170.9	165.6	158.9
11 Operating Profit (Loss) per RTM	-2.0	-1.3	0.5	0.7	3.2	5.9	8.8
12 Operating Expense per ATM	103.3	98.5	105.5	104.4	100.5	96.8	92.4
13 Passenger Revenue per RPM	12.62	12.41	13.04	12.99	12.67	12.53	12.36
<b>FINANCIAL RATIOS:</b>							
14 Operating Revenues to Total Investment	*	*	1.50	1.40	1.27	1.60	2.17
15 Times Interest Earned	*	*	-14.26	-13.12	-12.33	-5.91	4.40
16 Current Assets to Current Liabilities	*	*	0.81	0.84	0.90	0.83	0.83
17 No. of Days Cash Coverage of Cash Exp.	*	*	40.9	54.4	61.9	49.3	55.6
<b>FINANCIAL PERCENTAGES:</b>							
18 Operating Profit (Loss) to Operating Revenue	-1.1	-0.7	0.3	0.4	1.8	3.4	5.2
19 Net Income to Stockholders Equity	*	*	-186.15	-129.96	-100.85	-116.23	382.79
20 Corporate Return on Investment	*	*	-56.3	-47.5	-42.6	-31.7	27.7
21 Debt to Total Investment	*	*	77.7	81.6	71.4	70.2	47.3
<b>PASSENGER LOAD FACTOR: (Sch. Svc. %)</b>							
22 Actual	80.3	78.7	82.1	81.7	81.4	81.3	81.1
23 Breakeven	82.7	80.3	82.5	81.9	80.6	79.9	78.6
<b>Employment &amp; Productivity:</b>							
24 Employment, Total Weighted Avg CY	45,423	48,501	47,500	48,269	48,618	48,171	47,316
25 Overall RTM's per Employee (000)	61.1	57.1	248.1	244.1	240.6	240.3	242.5

	CHANGE OVER COMPARABLE PERIOD 12 MONTHS EARLIER						
26 Operating Revenues (%)	2.6	12.6	9.0	11.4	12.2	11.7	11.0
27 Operating Expenses (%)	3.1	13.4	14.7	17.5	14.9	12.0	5.3
28 Operating Profit (Loss) (in Millions \$)	-21.0	-31.9	-949.1	-960.0	-383.0	23.6	974.0
29 Net Income (Loss)(in Millions \$)	-787.8	1,705.9	-10,227.0	-7,733.3	-7,279.9	-561.9	7,790.9
30 RPMs (Sch. Svc.) (%)	0.7	4.5	2.2	3.1	4.4	4.8	4.6
31 ASMs (Sch. Svc.) (%)	-1.2	3.5	1.0	2.2	2.8	2.2	1.8
32 Operating Revenues per RTM (%)	2.4	8.2	6.1	7.5	7.5	7.4	7.6
33 Operating Expense per RTM (%)	2.8	8.9	11.7	13.4	10.1	7.7	2.2
34 Passenger Revenue per RPM (Sch. Svc.)(%)	1.7	5.6	5.5	6.4	4.7	4.1	4.7

## QUARTERLY FINANCIAL & TRAFFIC REVIEW

### SYSTEM OPERATIONS

#### ExpressJet Airlines 1/

ITEMS	QUARTER ENDED		12 MONTHS ENDED				
	2008/12	2007/12	2008/12	2008/09	2008/06	2008/03	2007/12
<b>FINANCIAL RESULTS: (\$Millions)</b>							
1 Operating Revenues	157.4	432.7	1,306.4	1,581.7	1,761.4	1,710.8	1,676.1
2 Operating Expenses	165.2	473.3	1,420.1	1,728.1	1,914.3	1,861.4	1,776.9
3 Operating Profit (Loss)	-7.8	-40.6	-113.6	-146.4	-152.9	-150.6	-100.8
4 Net Income (Loss)	-27.1	-27.5	-99.1	-99.5	-110.1	-108.1	-67.0
<b>TRAFFIC: (Billions)</b>							
5 RPMs - Scheduled Svc.	1.8	2.7	9.1	10.0	10.5	10.3	10.1
6 ASMs - Scheduled Svc.	2.4	3.7	12.0	13.3	14.1	13.9	13.5
7 Overall RTMs (All Svc.)	0.2	0.3	0.9	1.0	1.1	1.0	1.0
8 Overall ATMs (All Svc.)	0.3	0.5	1.5	1.6	1.7	1.7	1.6
<b>YIELD &amp; UNIT COST &amp; PROFITS: (Cents)</b>							
9 Operating Revenue per RTM	86.6	160.1	142.8	157.6	166.7	165.2	166.1
10 Operating Expense per RTM	90.9	175.1	155.2	172.2	181.2	179.8	176.1
11 Operating Profit (Loss) per RTM	-4.3	-15.0	-12.4	-14.6	-14.5	-14.5	-10.0
12 Operating Expense per ATM	57.4	104.7	97.6	106.8	111.9	110.3	108.7
13 Passenger Revenue per RPM	7.90	15.54	13.61	15.17	16.13	16.05	16.21
<b>FINANCIAL RATIOS:</b>							
14 Operating Revenues to Total Investment	*	*	4.59	5.07	5.24	4.72	4.36
15 Times Interest Earned	*	*	-5.44	-7.39	-8.94	-8.69	-4.84
16 Current Assets to Current Liabilities	*	*	1.73	1.62	1.47	1.56	1.92
17 No. of Days Cash Coverage of Cash Exp.	*	*	31.6	31.6	37.5	35.4	44.6
<b>FINANCIAL PERCENTAGES:</b>							
18 Operating Profit (Loss) to Operating Revenue	-5.0	-9.4	-8.7	-9.3	-8.7	-8.8	-6.0
19 Net Income to Stockholders Equity	*	*	&	&	&	&	-198.02
20 Corporate Return on Investment	*	*	-28.6	-26.4	-27.6	-25.1	-12.8
21 Debt to Total Investment	*	*	146.1	129.0	124.6	114.4	103.0
<b>PASSENGER LOAD FACTOR: (Sch. Svc. %)</b>							
22 Actual	75.9	72.2	76.0	75.0	74.6	74.1	74.6
23 Breakeven	80.5	80.0	83.7	83.0	82.1	81.6	79.7
<b>Employment &amp; Productivity:</b>							
24 Employment, Total Weighted Avg CY	5,384	7,800	6,748	7,352	7,635	7,734	7,650
25 Overall RTM's per Employee (000)	33.8	34.7	135.6	136.5	138.4	133.9	131.9

CHANGE OVER COMPARABLE PERIOD 12 MONTHS EARLIER							
26 Operating Revenues (%)	-63.6	2.1	-22.1	-5.1	6.4	1.8	0.1
27 Operating Expenses (%)	-65.1	21.8	-20.1	2.1	19.0	19.5	16.2
28 Operating Profit (Loss) (in Millions \$)	32.8	-75.7	-12.9	-121.3	-199.2	-273.0	-245.2
29 Net Income (Loss)(in Millions \$)	0.4	-50.7	-32.1	-83.2	-138.5	-186.3	-156.4
30 RPMs (Sch. Svc.) (%)	-32.9	6.4	-9.6	0.8	6.8	0.8	-2.3
31 ASMs (Sch. Svc.) (%)	-36.1	13.9	-11.3	2.1	10.0	6.3	2.2
32 Operating Revenues per RTM (%)	-45.9	-4.3	-14.1	-6.2	-0.6	0.8	2.3
33 Operating Expense per RTM (%)	-48.1	14.1	-11.9	0.9	11.1	18.3	18.8
34 Passenger Revenue per RPM (Sch. Svc.)(%)	-49.2	-6.9	-16.0	-8.2	-2.6	-1.3	-0.1

## QUARTERLY FINANCIAL & TRAFFIC REVIEW

### SYSTEM OPERATIONS

#### Frontier Airlines

ITEMS	QUARTER ENDED		12 MONTHS ENDED				
	2008/12	2007/12	2008/12	2008/09	2008/06	2008/03	2007/12
<b>FINANCIAL RESULTS: (\$Millions)</b>							
1 Operating Revenues	299.1	333.9	1,370.9	1,405.7	1,415.0	1,399.3	1,334.4
2 Operating Expenses	299.1	362.2	1,458.3	1,521.4	1,498.6	1,437.2	1,344.2
3 Operating Profit (Loss)	0.0	-28.3	-87.4	-115.7	-83.6	-37.9	-9.8
4 Net Income (Loss)	-0.8	-29.4	-133.1	-161.7	-112.5	-56.4	-26.0
<b>TRAFFIC: (Billions)</b>							
5 RPMs - Scheduled Svc.	2.1	2.4	9.9	10.1	10.3	10.2	9.8
6 ASMs - Scheduled Svc.	2.7	3.1	12.0	12.5	12.7	12.7	12.5
7 Overall RTMs (All Svc.)	0.2	0.2	1.0	1.0	1.0	1.0	1.0
8 Overall ATMs (All Svc.)	0.3	1.1	1.8	2.5	3.2	3.9	4.3
<b>YIELD &amp; UNIT COST &amp; PROFITS: (Cents)</b>							
9 Operating Revenue per RTM	138.8	136.5	136.7	136.3	135.5	135.2	133.7
10 Operating Expense per RTM	138.8	148.1	145.5	147.5	143.5	138.8	134.7
11 Operating Profit (Loss) per RTM	0.0	-11.6	-8.7	-11.2	-8.0	-3.7	-1.0
12 Operating Expense per ATM	90.2	33.7	83.4	61.0	46.6	36.8	31.4
13 Passenger Revenue per RPM	12.41	11.46	12.20	11.98	11.60	11.42	11.30
<b>FINANCIAL RATIOS:</b>							
14 Operating Revenues to Total Investment	*	*	3.94	2.86	2.26	1.89	1.83
15 Times Interest Earned	*	*	-5.77	-6.20	-3.80	-1.39	-0.21
16 Current Assets to Current Liabilities	*	*	1.06	0.92	0.91	0.77	0.90
17 No. of Days Cash Coverage of Cash Exp.	*	*	17.7	18.1	16.1	32.8	47.5
<b>FINANCIAL PERCENTAGES:</b>							
18 Operating Profit (Loss) to Operating Revenue	0.0	-8.5	-6.4	-8.2	-5.9	-2.7	-0.7
19 Net Income to Stockholders Equity	*	*	-105.73	-103.64	-61.60	-27.74	-12.14
20 Corporate Return on Investment	*	*	-32.6	-28.4	-14.2	-4.4	-0.6
21 Debt to Total Investment	*	*	3.9	2.6	0.0	77.7	71.7
<b>PASSENGER LOAD FACTOR: (Sch. Svc. %)</b>							
22 Actual	80.3	76.8	81.9	81.0	80.8	80.3	78.6
23 Breakeven	80.3	86.0	88.1	89.3	87.7	84.3	81.8
<b>Employment &amp; Productivity:</b>							
24 Employment, Total Weighted Avg CY	4,433	5,219	4,825	5,022	5,157	5,114	4,962
25 Overall RTM's per Employee (000)	48.6	46.9	207.8	205.4	202.5	202.4	201.1

CHANGE OVER COMPARABLE PERIOD 12 MONTHS EARLIER							
26 Operating Revenues (%)	-10.4	25.3	2.7	11.0	17.5	20.5	17.9
27 Operating Expenses (%)	-17.4	27.1	8.5	20.1	22.5	22.7	17.5
28 Operating Profit (Loss) (in Millions \$)	28.3	-9.8	-77.6	-115.6	-64.6	-28.0	2.6
29 Net Income (Loss)(in Millions \$)	28.6	-15.0	-107.1	-150.7	-84.7	-36.0	-8.2
30 RPMs (Sch. Svc.) (%)	-11.9	25.4	0.1	8.4	16.1	19.6	18.4
31 ASMs (Sch. Svc.) (%)	-15.7	20.5	-3.9	4.5	10.5	16.0	20.0
32 Operating Revenues per RTM (%)	1.7	0.7	2.3	2.2	1.2	0.9	-0.1
33 Operating Expense per RTM (%)	-6.3	2.1	8.0	10.6	5.5	2.7	-0.5
34 Passenger Revenue per RPM (Sch. Svc.)(%)	8.3	-0.9	8.0	5.9	1.5	-0.5	-1.3

1/ Frontier filed for bankruptcy April 2008.

## QUARTERLY FINANCIAL & TRAFFIC REVIEW

### SYSTEM OPERATIONS

### JetBlue Airways

ITEMS	QUARTER ENDED		12 MONTHS ENDED				
	2008/12	2007/12	2008/12	2008/09	2008/06	2008/03	2007/12
<b>FINANCIAL RESULTS: (\$Millions)</b>							
1 Operating Revenues	811.1	738.9	3,390.2	3,317.9	3,180.5	3,051.3	2,843.2
2 Operating Expenses	767.8	710.9	3,305.6	3,248.7	3,048.5	2,853.8	2,677.0
3 Operating Profit (Loss)	43.3	28.0	84.6	69.3	132.0	197.4	166.2
4 Net Income (Loss)	-57.1	-3.4	-75.9	-22.2	4.8	32.3	18.4
<b>TRAFFIC: (Billions)</b>							
5 RPMs - Scheduled Svc.	5.9	6.2	26.1	26.4	26.4	26.4	25.7
6 ASMs - Scheduled Svc.	7.5	8.1	32.4	33.0	33.2	33.0	32.2
7 Overall RTMs (All Svc.)	0.6	0.6	2.6	2.7	2.7	2.7	2.6
8 Overall ATMs (All Svc.)	0.9	1.0	4.1	4.1	4.2	4.1	4.0
<b>YIELD &amp; UNIT COST &amp; PROFITS: (Cents)</b>							
9 Operating Revenue per RTM	135.7	118.2	128.8	124.7	119.7	115.1	109.8
10 Operating Expense per RTM	128.5	113.7	125.6	122.1	114.7	107.6	103.4
11 Operating Profit (Loss) per RTM	7.3	4.5	3.2	2.6	5.0	7.4	6.4
12 Operating Expense per ATM	81.5	69.9	81.2	78.4	73.2	69.2	67.2
13 Passenger Revenue per RPM	12.24	10.90	11.72	11.41	11.05	10.70	10.23
<b>FINANCIAL RATIOS:</b>							
14 Operating Revenues to Total Investment	*	*	0.78	0.77	0.75	0.75	0.72
15 Times Interest Earned	*	*	0.59	0.83	1.11	1.40	1.22
16 Current Assets to Current Liabilities	*	*	0.89	0.83	0.98	0.84	0.89
17 No. of Days Cash Coverage of Cash Exp.	*	*	67.21	67.53	122.73	102.79	121.80
<b>FINANCIAL PERCENTAGES:</b>							
18 Operating Profit (Loss) to Operating Revenue	5.3	3.8	2.5	2.1	4.1	6.5	5.8
19 Net Income to Stockholders Equity	*	*	-6.04	-1.83	0.41	3.03	1.85
20 Corporate Return on Investment	*	*	2.5	3.6	4.2	5.2	5.1
21 Debt to Total Investment	*	*	70.6	70.9	70.6	69.8	74.4
<b>PASSENGER LOAD FACTOR: (Sch. Svc. %)</b>							
22 Actual	78.6	76.6	80.4	79.8	79.4	79.8	80.0
23 Breakeven	76.3	76.0	80.7	80.5	78.0	76.2	76.9
<b>Employment &amp; Productivity:</b>							
24 Employment, Total Weighted Avg CY	10,378	10,021	10,444	10,355	10,171	9,929	9,696
25 Overall RTM's per Employee (000)	57.6	62.4	252.1	256.9	261.2	267.0	266.9

	CHANGE OVER COMPARABLE PERIOD 12 MONTHS EARLIER						
26 Operating Revenues (%)	9.8	16.6	19.2	21.2	22.3	23.0	20.3
27 Operating Expenses (%)	8.0	24.1	23.5	28.0	24.8	21.3	19.2
28 Operating Profit (Loss) (in Millions \$)	15.3	-32.8	-81.6	-129.7	-24.5	68.8	49.1
29 Net Income (Loss)(in Millions \$)	-53.8	-20.9	-94.3	-61.5	-11.5	23.6	19.1
30 RPMs (Sch. Svc.) (%)	-5.0	7.1	1.4	4.2	7.6	11.2	10.3
31 ASMs (Sch. Svc.) (%)	-7.4	11.5	0.9	5.5	9.0	11.8	12.5
32 Operating Revenues per RTM (%)	14.8	9.1	17.2	16.1	13.7	10.8	9.0
33 Operating Expense per RTM (%)	13.0	16.1	21.4	22.6	16.0	9.3	8.0
34 Passenger Revenue per RPM (Sch. Svc.)(%)	12.3	6.7	14.5	13.4	11.7	9.2	7.3

## QUARTERLY FINANCIAL & TRAFFIC REVIEW

### SYSTEM OPERATIONS

#### Mesa Airlines

ITEMS	QUARTER ENDED		12 MONTHS ENDED				
	2008/12	2007/12	2008/12	2008/09	2008/06	2008/03	2007/12
<b>FINANCIAL RESULTS: (\$Millions)</b>							
1 Operating Revenues	219.3	260.8	1,037.8	1,079.3	1,061.7	1,054.2	1,041.5
2 Operating Expenses	203.7	269.1	1,044.4	1,109.8	1,078.1	1,060.3	1,056.5
3 Operating Profit (Loss)	15.6	-8.3	-6.6	-30.5	-16.4	-6.1	-15.0
4 Net Income (Loss)	8.5	-9.3	-8.0	-25.8	-9.7	-9.7	-28.3
<b>TRAFFIC: (Billions)</b>							
5 RPMs - Scheduled Svc.	1.2	1.3	5.1	5.2	5.3	5.5	5.7
6 ASMs - Scheduled Svc.	1.5	1.8	6.6	6.9	7.0	7.2	7.4
7 Overall RTMs (All Svc.)	0.1	0.1	0.5	0.5	0.5	0.6	0.6
8 Overall ATMs (All Svc.)	0.2	0.2	0.9	0.9	0.9	0.9	1.0
<b>YIELD &amp; UNIT COST &amp; PROFITS: (Cents)</b>							
9 Operating Revenue per RTM	187.1	200.1	204.4	207.2	199.4	190.9	181.5
10 Operating Expense per RTM	173.9	206.4	205.7	213.1	202.5	192.0	184.2
11 Operating Profit (Loss) per RTM	13.3	-6.3	-1.3	-5.8	-3.1	-1.1	-2.6
12 Operating Expense per ATM	101.9	119.8	120.7	124.7	118.9	115.5	111.5
13 Passenger Revenue per RPM	18.34	19.62	20.11	20.38	19.58	18.73	18.24
<b>FINANCIAL RATIOS:</b>							
14 Operating Revenues to Total Investment	*	*	0.89	0.91	0.87	0.85	0.85
15 Times Interest Earned	*	*	0.41	-0.31	0.19	0.29	-0.72
16 Current Assets to Current Liabilities	*	*	2.28	2.27	2.53	2.68	3.06
17 No. of Days Cash Coverage of Cash Exp.	*	*	22.14	21.11	20.32	54.97	61.14
<b>FINANCIAL PERCENTAGES:</b>							
18 Operating Profit (Loss) to Operating Revenue	7.1	-3.2	-0.6	-2.8	-1.5	-0.6	-1.4
19 Net Income to Stockholders Equity	*	*	-3.26	-10.35	-3.82	-3.76	-11.19
20 Corporate Return on Investment	*	*	1.7	0.1	1.4	1.4	-0.2
21 Debt to Total Investment	*	*	77.9	78.8	77.8	79.6	79.8
<b>PASSENGER LOAD FACTOR: (Sch. Svc. %)</b>							
22 Actual	77.4	73.8	76.6	75.7	76.0	76.9	77.5
23 Breakeven	68.7	73.3	74.0	74.8	73.9	73.3	74.0
<b>Employment &amp; Productivity:</b>							
24 Employment, Total Weighted Avg CY	2,924	3,170	2,946	3,008	3,060	3,139	3,211
25 Overall RTM's per Employee (000)	40.1	41.1	172.3	173.1	174.0	175.9	178.7

CHANGE OVER COMPARABLE PERIOD 12 MONTHS EARLIER							
26 Operating Revenues (%)	-15.9	-6.5	-0.4	1.9	-3.2	-4.8	-9.1
27 Operating Expenses (%)	-24.3	0.8	-1.1	5.3	-0.6	-2.9	-2.7
28 Operating Profit (Loss) (in Millions \$)	23.8	-20.3	8.4	-35.8	-28.6	-21.5	-74.5
29 Net Income (Loss)(in Millions \$)	17.8	-13.7	20.3	-11.2	-2.3	-8.7	-60.5
30 RPMs (Sch. Svc.) (%)	-10.1	-11.9	-11.5	-11.9	-11.2	-8.4	-5.7
31 ASMs (Sch. Svc.) (%)	-14.3	-9.3	-10.4	-9.2	-9.3	-7.9	-6.6
32 Operating Revenues per RTM (%)	-6.5	6.3	12.6	15.7	9.1	4.1	-3.5
33 Operating Expense per RTM (%)	-15.8	14.6	11.7	19.5	12.0	6.2	3.3
34 Passenger Revenue per RPM (Sch. Svc.)(%)	-6.5	6.0	10.2	13.2	6.4	1.3	-1.9

## QUARTERLY FINANCIAL & TRAFFIC REVIEW

### SYSTEM OPERATIONS

#### Northwest Airlines

ITEMS	QUARTER ENDED		12 MONTHS ENDED				
	2008/12	2007/12	2008/12	2008/09	2008/06	2008/03	2007/12
<b>FINANCIAL RESULTS: (\$Millions)</b>							
1 Operating Revenues	3,201.5	3,189.3	14,095.7	14,083.5	13,629.3	13,154.4	12,734.6
2 Operating Expenses	3,642.1	3,094.1	14,636.2	14,088.2	12,952.6	12,361.3	11,611.0
3 Operating Profit (Loss)	-440.7	95.2	-540.5	-4.7	676.7	793.2	1,123.7
4 Net Income (Loss)	-1,164.5	-4.4	-5,986.8	-4,826.6	-4,335.4	-1,458.3	2,387.5
<b>TRAFFIC: (Billions)</b>							
5 RPMs - Scheduled Svc.	15.9	17.4	71.2	72.7	73.1	73.0	72.9
6 ASMs - Scheduled Svc.	19.1	21.0	83.9	85.8	86.0	86.0	86.1
7 Overall RTMs (All Svc.)	1.9	2.3	8.8	9.2	9.4	9.4	9.4
8 Overall ATMs (All Svc.)	3.1	3.6	13.6	14.1	14.3	14.3	14.4
<b>YIELD &amp; UNIT COST &amp; PROFITS: (Cents)</b>							
9 Operating Revenue per RTM	166.3	137.3	160.0	153.0	145.6	140.1	135.9
10 Operating Expense per RTM	189.2	133.2	166.2	153.0	138.4	131.6	123.9
11 Operating Profit (Loss) per RTM	-22.9	4.1	-6.1	-0.1	7.2	8.4	12.0
12 Operating Expense per ATM	118.8	87.0	108.0	100.3	90.8	86.2	80.6
13 Passenger Revenue per RPM	12.65	12.46	13.18	13.13	12.87	12.73	12.75
<b>FINANCIAL RATIOS:</b>							
14 Operating Revenues to Total Investment	*	*	1.35	1.18	1.19	1.35	1.58
15 Times Interest Earned	*	*	-11.29	-9.93	-8.50	-1.61	6.32
16 Current Assets to Current Liabilities	*	*	1.17	1.02	1.08	1.06	1.21
17 No. of Days Cash Coverage of Cash Exp.	*	*	58.28	93.50	106.28	112.49	121.77
<b>FINANCIAL PERCENTAGES:</b>							
18 Operating Profit (Loss) to Operating Revenue	-13.8	3.0	-3.8	0.0	5.0	6.0	8.8
19 Net Income to Stockholders Equity	*	*	-176.06	-104.35	-99.90	-44.61	108.32
20 Corporate Return on Investment	*	*	-52.4	-36.6	-33.9	-10.1	35.7
21 Debt to Total Investment	*	*	82.1	75.1	72.4	69.9	49.6
<b>PASSENGER LOAD FACTOR: (Sch. Svc. %)</b>							
22 Actual	83.2	83.0	84.9	84.8	84.9	84.9	84.7
23 Breakeven	112.3	87.1	98.3	92.7	86.4	84.1	79.3
<b>Employment &amp; Productivity:</b>							
24 Employment, Total Weighted Avg CY	27,822	29,586	28,810	29,251	29,417	29,351	29,265
25 Overall RTM's per Employee (000)	69.2	78.5	305.7	314.7	318.1	320.0	320.2

	CHANGE OVER COMPARABLE PERIOD 12 MONTHS EARLIER						
	2008/12	2007/12	2008/12	2008/09	2008/06	2008/03	2007/12
26 Operating Revenues (%)	0.4	6.6	10.7	12.3	9.2	4.8	1.4
27 Operating Expenses (%)	17.7	7.4	26.1	23.6	13.4	7.0	-1.4
28 Operating Profit (Loss) (in Millions \$)	-535.9	-14.5	-1,664.2	-1,142.8	-380.9	-200.9	342.0
29 Net Income (Loss)(in Millions \$)	-1,160.1	286.7	-8,374.2	-6,927.4	-5,097.2	564.6	5,186.0
30 RPMs (Sch. Svc.) (%)	-8.8	-1.9	-2.3	-0.7	-0.2	-0.1	0.4
31 ASMs (Sch. Svc.) (%)	-9.0	-2.5	-2.6	-1.1	-1.0	-0.6	0.6
32 Operating Revenues per RTM (%)	21.2	7.5	17.7	14.6	10.2	6.3	3.3
33 Operating Expense per RTM (%)	42.1	8.2	34.1	26.0	14.5	8.5	0.4
34 Passenger Revenue per RPM (Sch. Svc.)(%)	1.5	2.7	3.4	3.6	1.9	0.8	2.2

## QUARTERLY FINANCIAL & TRAFFIC REVIEW

### SYSTEM OPERATIONS

#### Skywest Airlines

ITEMS	QUARTER ENDED		12 MONTHS ENDED				
	2008/12	2007/12	2008/12	2008/09	2008/06	2008/03	2007/12
<b>FINANCIAL RESULTS: (\$Millions)</b>							
1 Operating Revenues	447.2	513.7	2,063.6	2,130.2	2,115.3	2,095.8	2,049.9
2 Operating Expenses	418.1	466.6	1,923.0	1,971.6	1,941.2	1,912.6	1,867.7
3 Operating Profit (Loss)	29.1	47.1	140.6	158.6	174.1	183.2	182.2
4 Net Income (Loss)	13.9	29.0	73.4	88.5	97.7	101.3	101.0
<b>TRAFFIC: (Billions)</b>							
5 RPMs - Scheduled Svc.	2.6	2.8	11.2	11.4	11.6	11.7	11.6
6 ASMs - Scheduled Svc.	3.4	3.8	14.6	15.0	15.3	15.3	14.9
7 Overall RTMs (All Svc.)	0.3	0.3	1.1	1.1	1.2	1.2	1.2
8 Overall ATMs (All Svc.)	0.5	0.5	1.9	1.9	2.0	2.0	2.0
<b>YIELD &amp; UNIT COST &amp; PROFITS: (Cents)</b>							
9 Operating Revenue per RTM	169.9	181.3	184.9	187.5	182.2	178.7	177.2
10 Operating Expense per RTM	158.9	164.7	172.3	173.5	167.2	163.0	161.5
11 Operating Profit (Loss) per RTM	11.0	16.6	12.6	14.0	15.0	15.6	15.7
12 Operating Expense per ATM	91.3	93.2	101.2	101.5	95.7	95.0	95.2
13 Passenger Revenue per RPM	16.79	17.94	18.26	18.52	17.99	17.64	17.50
<b>FINANCIAL RATIOS:</b>							
14 Operating Revenues to Total Investment	*	*	1.12	1.16	1.14	1.13	1.12
15 Times Interest Earned	*	*	3.55	3.89	4.08	4.07	4.18
16 Current Assets to Current Liabilities	*	*	2.32	2.27	2.19	2.18	2.55
17 No. of Days Cash Coverage of Cash Exp.	*	*	83.66	91.02	80.76	74.22	87.92
<b>FINANCIAL PERCENTAGES:</b>							
18 Operating Profit (Loss) to Operating Revenue	6.5	9.2	6.8	7.4	8.2	8.7	8.9
19 Net Income to Stockholders Equity	*	*	6.82	8.20	9.00	9.22	9.13
20 Corporate Return on Investment	*	*	6.4	7.3	7.9	8.2	8.2
21 Debt to Total Investment	*	*	42.6	41.2	41.9	41.8	40.6
<b>PASSENGER LOAD FACTOR: (Sch. Svc. %)</b>							
22 Actual	77.4	74.5	76.3	75.6	75.9	76.8	77.5
23 Breakeven	72.8	67.7	71.6	70.3	70.0	70.4	70.8
<b>Employment &amp; Productivity:</b>							
24 Employment, Total Weighted Avg CY	8,968	10,157	9,465	9,762	9,926	9,965	9,754
25 Overall RTM's per Employee (000)	29.3	27.9	117.9	116.4	117.0	117.7	118.6

	CHANGE OVER COMPARABLE PERIOD 12 MONTHS EARLIER						
26 Operating Revenues (%)	-13.0	9.4	0.7	6.2	8.1	10.5	10.9
27 Operating Expenses (%)	-10.4	7.2	3.0	7.4	8.3	10.4	11.1
28 Operating Profit (Loss) (in Millions \$)	-18.0	13.0	-41.6	-10.6	9.1	19.5	14.5
29 Net Income (Loss)(in Millions \$)	-15.1	12.4	-27.6	-0.1	10.3	14.6	13.6
30 RPMs (Sch. Svc.) (%)	-7.1	15.5	-3.5	1.6	10.3	18.0	21.8
31 ASMs (Sch. Svc.) (%)	-10.6	20.4	-2.0	5.2	14.3	21.3	24.8
32 Operating Revenues per RTM (%)	-6.3	-5.3	4.4	4.6	-2.0	-6.4	-9.0
33 Operating Expense per RTM (%)	-3.5	-7.2	6.7	5.7	-1.8	-6.5	-8.8
34 Passenger Revenue per RPM (Sch. Svc.)(%)	-6.4	-5.2	4.3	4.6	-1.9	-6.3	-8.7

## QUARTERLY FINANCIAL & TRAFFIC REVIEW

### SYSTEM OPERATIONS

#### Southwest Airlines

ITEMS	QUARTER ENDED		12 MONTHS ENDED				
	2008/12	2007/12	2008/12	2008/09	2008/06	2008/03	2007/12
<u>FINANCIAL RESULTS: (\$Millions)</u>							
1 Operating Revenues	2,734.0	2,492.0	11,023.2	10,781.3	10,478.8	10,192.8	9,860.8
2 Operating Expenses	2,664.2	2,365.6	10,574.0	10,275.5	9,807.9	9,398.6	9,070.6
3 Operating Profit (Loss)	69.8	126.4	449.2	505.8	670.9	794.2	790.2
4 Net Income (Loss)	-56.0	111.4	178.2	345.6	628.2	585.5	644.7
<u>TRAFFIC: (Billions)</u>							
5 RPMs - Scheduled Svc.	17.3	17.5	73.5	73.7	74.6	73.8	72.3
6 ASMs - Scheduled Svc.	25.5	25.3	103.3	103.1	102.5	101.2	99.6
7 Overall RTMs (All Svc.)	1.8	1.8	7.5	7.5	7.6	7.5	7.4
8 Overall ATMs (All Svc.)	3.4	3.4	14.0	14.0	13.9	13.7	13.5
<u>YIELD &amp; UNIT COST &amp; PROFITS: (Cents)</u>							
9 Operating Revenue per RTM	155.1	139.3	146.9	143.2	137.6	135.4	133.7
10 Operating Expense per RTM	151.2	132.2	140.9	136.5	128.8	124.8	123.0
11 Operating Profit (Loss) per RTM	4.0	7.1	6.0	6.7	8.8	10.5	10.7
12 Operating Expense per ATM	77.4	69.2	75.7	73.7	70.7	68.7	67.3
13 Passenger Revenue per RPM	14.70	13.21	13.91	13.56	13.03	12.82	12.68
<u>FINANCIAL RATIOS:</u>							
14 Operating Revenues to Total Investment	*	*	1.15	1.14	1.15	1.20	1.19
15 Times Interest Earned	*	*	3.66	6.57	13.22	13.87	16.25
16 Current Assets to Current Liabilities	*	*	0.91	0.96	1.07	0.88	0.93
17 No. of Days Cash Coverage of Cash Exp.	*	*	65.98	129.28	230.87	129.02	119.12
<u>FINANCIAL PERCENTAGES:</u>							
18 Operating Profit (Loss) to Operating Revenue	2.6	5.1	4.1	4.7	6.4	7.8	8.0
19 Net Income to Stockholders Equity	*	*	2.56	4.78	8.83	8.77	9.88
20 Corporate Return on Investment	*	*	2.9	4.7	7.8	7.8	8.6
21 Debt to Total Investment	*	*	42.5	27.3	23.4	22.8	23.1
<u>PASSENGER LOAD FACTOR: (Sch. Svc. %)</u>							
22 Actual	67.8	69.3	71.2	71.5	72.8	73.0	72.6
23 Breakeven	65.7	65.1	67.7	67.5	67.2	66.2	65.6
<u>Employment &amp; Productivity:</u>							
24 Employment, Total Weighted Avg CY	35,611	34,119	34,676	34,303	33,957	33,759	33,437
25 Overall RTM's per Employee (000)	49.5	52.4	216.4	219.5	224.2	223.0	220.6

	CHANGE OVER COMPARABLE PERIOD 12 MONTHS EARLIER						
26 Operating Revenues (%)	9.7	9.5	11.8	11.8	11.5	10.0	8.5
27 Operating Expenses (%)	12.6	12.5	16.6	16.7	14.7	12.6	11.3
28 Operating Profit (Loss) (in Millions \$)	-56.6	-47.1	-341.0	-331.5	-176.1	-125.7	-144.1
29 Net Income (Loss)(in Millions \$)	-167.4	54.6	-466.4	-244.4	152.5	55.1	145.6
30 RPMs (Sch. Svc.) (%)	-1.4	4.2	1.6	3.0	7.0	7.7	6.8
31 ASMs (Sch. Svc.) (%)	0.8	5.6	3.7	4.9	6.4	7.3	7.5
32 Operating Revenues per RTM (%)	11.4	5.1	9.9	8.5	4.2	2.4	2.2
33 Operating Expense per RTM (%)	14.3	8.0	14.6	13.2	7.1	4.9	4.8
34 Passenger Revenue per RPM (Sch. Svc.)(%)	11.3	3.9	9.8	8.0	3.4	1.1	0.4

## QUARTERLY FINANCIAL & TRAFFIC REVIEW

### SYSTEM OPERATIONS

#### US Airways 2/

ITEMS	QUARTER ENDED		12 MONTHS ENDED				
	2008/12	2007/12	2008/12	2008/09	2008/06	2008/03	2007/12
<b>FINANCIAL RESULTS: (\$Millions)</b>							
1 Operating Revenues	2,840.9	2,855.0	12,459.2	12,473.4	11,388.2	11,278.8	11,163.5
2 Operating Expenses	3,196.2	2,958.1	14,232.6	13,994.5	11,978.1	11,036.8	10,599.1
3 Operating Profit (Loss)	-355.4	-103.0	-1,773.5	-1,521.1	-589.9	241.9	564.4
4 Net Income (Loss)	-509.9	-95.9	-2,148.4	-1,734.4	-659.8	71.3	382.2
<b>TRAFFIC: (Billions)</b>							
5 RPMs - Scheduled Svc.	13.6	14.1	60.5	61.1	55.4	55.5	55.5
6 ASMs - Scheduled Svc.	17.0	18.1	74.1	75.2	68.6	68.7	68.9
7 Overall RTMs (All Svc.)	1.4	1.5	6.4	6.4	5.9	5.9	5.9
8 Overall ATMs (All Svc.)	2.4	2.5	10.3	10.5	9.6	9.6	9.7
<b>YIELD &amp; UNIT COST &amp; PROFITS: (Cents)</b>							
9 Operating Revenue per RTM	198.7	190.7	196.0	194.2	194.7	192.5	190.5
10 Operating Expense per RTM	223.5	197.6	223.9	217.9	204.8	188.4	180.9
11 Operating Profit (Loss) per RTM	-24.8	-6.9	-27.9	-23.7	-10.1	4.1	9.6
12 Operating Expense per ATM	134.8	117.7	138.0	133.8	124.9	114.6	109.3
13 Passenger Revenue per RPM	12.94	13.08	13.17	13.20	13.32	13.26	13.19
<b>FINANCIAL RATIOS:</b>							
14 Operating Revenues to Total Investment	*	*	4.52	4.29	4.05	4.38	5.00
15 Times Interest Earned	*	*	-8.86	-7.63	-2.20	1.86	3.26
16 Current Assets to Current Liabilities	*	*	0.59	0.62	0.86	0.87	0.92
17 No. of Days Cash Coverage of Cash Exp.	*	*	27.23	33.68	62.13	69.43	75.85
<b>FINANCIAL PERCENTAGES:</b>							
18 Operating Profit (Loss) to Operating Revenue	-12.5	-3.6	-14.2	-12.2	-5.2	2.1	5.1
19 Net Income to Stockholders Equity	*	*	-240.00	-134.76	-49.99	6.11	42.79
20 Corporate Return on Investment	*	*	-70.0	-52.7	-16.1	11.1	27.4
21 Debt to Total Investment	*	*	109.3	88.3	62.9	50.2	44.3
<b>PASSENGER LOAD FACTOR: (Sch. Svc. %)</b>							
22 Actual	80.0	78.2	81.7	81.2	80.8	80.8	80.5
23 Breakeven	103.3	87.8	106.9	103.1	93.8	84.9	81.2
<b>Employment &amp; Productivity:</b>							
24 Employment, Total Weighted Avg CY	31,260	32,796	32,274	32,658	29,745	29,704	29,504
25 Overall RTM's per Employee (000)	45.7	45.6	197.0	196.7	196.7	197.2	198.6

	CHANGE OVER COMPARABLE PERIOD 12 MONTHS EARLIER						
	2008/12	2007/12	2008/12	2008/09	2008/06	2008/03	2007/12
26 Operating Revenues (%)	-0.5	-0.1	11.6	3.4	3.6	2.5	11.6
27 Operating Expenses (%)	8.1	6.2	34.3	23.2	15.5	6.8	12.5
28 Operating Profit (Loss) (in Millions \$)	-252.3	-176.4	-2,337.9	-2,221.5	-1,211.7	-426.0	-16.5
29 Net Income (Loss)(in Millions \$)	-414.0	-141.5	-2,530.7	-2,225.7	-1,053.9	-465.1	-67.8
30 RPMs (Sch. Svc.) (%)	-3.8	-3.3	9.2	-1.0	0.4	0.7	12.7
31 ASMs (Sch. Svc.) (%)	-5.9	-4.6	7.5	-1.9	-1.5	-1.5	10.2
32 Operating Revenues per RTM (%)	4.2	4.0	2.9	-99.9	3.7	2.4	-0.2
33 Operating Expense per RTM (%)	13.1	10.5	23.8	-99.9	15.6	6.7	0.6
34 Passenger Revenue per RPM (Sch. Svc.)(%)	-1.1	2.3	-0.1	-99.9	2.5	1.8	0.4

1/ Data retroactively adjusted to include America West due to merger.

## QUARTERLY FINANCIAL & TRAFFIC REVIEW

### SYSTEM OPERATIONS

#### United Air Lines

ITEMS	QUARTER ENDED		12 MONTHS ENDED				
	2008/12	2007/12	2008/12	2008/09	2008/06	2008/03	2007/12
<b>FINANCIAL RESULTS: (\$Millions)</b>							
1 Operating Revenues	4,548.7	4,973.8	20,237.2	20,662.3	20,560.3	20,386.1	20,049.1
2 Operating Expenses	5,162.1	5,093.7	21,983.8	21,915.4	20,709.3	19,785.1	19,096.7
3 Operating Profit (Loss)	-613.4	-119.9	-1,746.5	-1,253.1	-149.0	601.1	952.4
4 Net Income (Loss)	-1,144.1	-100.1	-3,824.0	-2,780.0	-1,727.8	-37.0	348.5
<b>TRAFFIC: (Billions)</b>							
5 RPMs - Scheduled Svc.	24.4	27.9	109.8	113.3	115.2	116.6	117.4
6 ASMs - Scheduled Svc.	30.7	34.9	135.5	139.8	141.3	141.8	141.8
7 Overall RTMs (All Svc.)	2.9	3.3	12.9	13.4	13.6	13.7	13.8
8 Overall ATMs (All Svc.)	5.0	5.6	22.0	22.6	22.8	22.8	22.7
<b>YIELD &amp; UNIT COST &amp; PROFITS: (Cents)</b>							
9 Operating Revenue per RTM	158.2	149.4	156.5	154.4	151.4	148.8	145.8
10 Operating Expense per RTM	179.5	153.0	170.1	163.8	152.4	144.4	138.9
11 Operating Profit (Loss) per RTM	-21.3	-3.6	-13.5	-9.4	-1.1	4.4	6.9
12 Operating Expense per ATM	102.8	90.5	100.0	97.0	90.9	86.7	84.0
13 Passenger Revenue per RPM	13.26	13.22	13.41	13.40	13.23	12.98	12.65
<b>FINANCIAL RATIOS:</b>							
14 Operating Revenues to Total Investment	*	*	2.48	2.15	1.93	1.77	1.66
15 Times Interest Earned	*	*	-9.35	-7.02	-4.28	1.54	1.96
16 Current Assets to Current Liabilities	*	*	0.67	0.78	0.70	0.70	0.77
17 No. of Days Cash Coverage of Cash Exp.	*	*	36.24	51.43	60.45	62.14	76.11
<b>FINANCIAL PERCENTAGES:</b>							
18 Operating Profit (Loss) to Operating Revenue	-13.5	-2.4	-8.6	-6.1	-0.7	2.9	4.8
19 Net Income to Stockholders Equity	*	*	-10,594.11	-262.91	-97.39	-1.58	14.66
20 Corporate Return on Investment	*	*	-40.6	-23.5	-11.0	4.6	8.2
21 Debt to Total Investment	*	*	149.7	120.7	109.5	80.1	76.8
<b>PASSENGER LOAD FACTOR: (Sch. Svc. %)</b>							
22 Actual	79.4	79.8	81.0	81.1	81.5	82.2	82.8
23 Breakeven	100.4	85.4	95.0	91.5	85.8	82.7	81.4
<b>Employment &amp; Productivity:</b>							
24 Employment, Total Weighted Avg CY	46,594	52,411	50,205	51,660	52,262	52,170	52,011
25 Overall RTM's per Employee (000)	61.7	63.5	257.5	259.0	259.9	262.6	264.4

	CHANGE OVER COMPARABLE PERIOD 12 MONTHS EARLIER						
	2008/12	2007/12	2008/12	2008/09	2008/06	2008/03	2007/12
26 Operating Revenues (%)	-8.5	8.4	0.9	5.1	6.3	5.9	3.7
27 Operating Expenses (%)	1.3	11.4	15.1	18.0	11.7	5.7	1.1
28 Operating Profit (Loss) (in Millions \$)	-493.5	-135.0	-2,698.9	-2,340.5	-941.5	72.1	501.8
29 Net Income (Loss)(in Millions \$)	-1,044.0	-41.2	-4,172.5	-3,169.7	-2,000.8	-133.7	-22,309.7
30 RPMs (Sch. Svc.) (%)	-12.6	-1.0	-6.5	-3.7	-2.1	-0.8	0.1
31 ASMs (Sch. Svc.) (%)	-12.2	-0.8	-4.5	-1.7	-0.9	-0.7	-0.7
32 Operating Revenues per RTM (%)	5.9	9.0	7.4	8.1	7.7	6.6	4.0
33 Operating Expense per RTM (%)	17.3	12.0	22.5	21.4	13.1	6.3	1.4
34 Passenger Revenue per RPM (Sch. Svc.)(%)	0.3	14.0	6.0	9.3	10.7	9.8	6.8

## QUARTERLY FINANCIAL & TRAFFIC REVIEW

### SYSTEM OPERATIONS

#### System Cargo Majors

ITEMS	QUARTER ENDED		12 MONTHS ENDED				
	2008/12	2007/12	2008/12	2008/09	2008/06	2008/03	2007/12
<b>FINANCIAL RESULTS: (\$Millions)</b>							
1 Operating Revenues	7,105.1	7,459.1	30,479.8	30,833.7	29,912.9	28,907.9	28,160.4
2 Operating Expenses	6,621.0	6,883.0	28,415.7	28,677.7	27,773.5	26,657.0	25,860.4
3 Operating Profit (Loss)	484.1	576.0	2,064.1	2,156.0	2,139.4	2,250.9	2,300.0
4 Net Income (Loss)	108.3	376.7	949.5	1,218.0	1,096.6	1,211.7	1,165.0
<b>TRAFFIC: (Billions)</b>							
5 RTMs - Scheduled Svc.	4.2	4.7	17.3	17.8	17.9	17.8	17.6
6 ATMs - Scheduled Svc.	7.4	7.6	29.1	29.3	29.3	29.1	28.7
7 Overall RTMs (All Svc.)	4.2	4.7	17.5	17.9	18.0	17.9	17.8
8 Overall ATMs (All Svc.)	7.5	7.7	29.5	29.7	29.7	29.4	29.0
<b>YIELD &amp; UNIT COST &amp; PROFITS: (Cents)</b>							
9 Operating Revenue per RTM	168.0	158.9	174.6	172.0	165.8	161.2	158.5
10 Operating Expense per RTM	156.6	146.6	162.8	160.0	153.9	148.7	145.6
11 Operating Profit (Loss) per RTM	11.4	12.3	11.8	12.0	11.9	12.6	12.9
12 Operating Expense per ATM	88.7	89.8	96.4	96.6	93.5	90.6	89.1
13 Passenger Revenue per RPM	*	*	*	*	*	*	*
<b>FINANCIAL RATIOS:</b>							
14 Operating Revenues to Total Investment	*	*	1.96	1.90	1.79	1.68	1.68
15 Times Interest Earned	*	*	24.30	53.01	999.90	999.90	999.90
16 Current Assets to Current Liabilities	*	*	0.89	0.91	0.96	0.93	0.83
17 No. of Days Cash Coverage of Cash Exp.	*	*	4.63	4.99	5.75	4.54	5.18
<b>FINANCIAL PERCENTAGES:</b>							
18 Operating Profit (Loss) to Operating Revenue	6.8	7.7	6.8	7.0	7.2	7.8	8.2
19 Net Income to Stockholders Equity	*	*	8.06	9.76	8.42	8.94	8.80
20 Corporate Return on Investment	*	*	6.6	7.7	6.5	6.8	6.6
21 Debt to Total Investment	*	*	29.0	26.0	26.8	21.0	21.1
<b>TON LOAD FACTOR: (%)</b>							
22 Scheduled Svc.	56.9	61.3	59.4	60.5	60.9	61.0	61.3
23 All Services	56.7	61.3	59.2	60.4	60.8	60.9	61.2
<b>Employment &amp; Productivity:</b>							
24 Employment, Total Weighted Avg CY	125,766	122,789	124,914	124,169	123,325	122,365	120,985
25 Overall RTM's per Employee (000)	33.6	38.2	139.8	144.3	146.3	146.5	146.8

	CHANGE OVER COMPARABLE PERIOD 12 MONTHS EARLIER						
26 Operating Revenues (%)	-4.7	8.2	8.2	11.7	9.8	7.3	5.7
27 Operating Expenses (%)	-3.8	8.7	9.9	13.3	11.1	7.7	5.8
28 Operating Profit (Loss) (in Millions \$)	-92.0	16.1	-236.0	-127.9	-98.5	50.4	102.3
29 Net Income (Loss)(in Millions \$)	-268.5	46.5	-215.5	99.4	-129.2	14.9	-132.4
30 RTMs (All Svc.) (%)	-9.9	6.3	-1.8	2.4	4.5	5.2	5.5
31 ATMs (All Svc.) (%)	-2.8	5.2	1.4	3.4	5.1	5.9	6.3
32 Operating Revenues per RTM (%)	5.7	1.6	10.1	9.0	4.9	1.8	0.0
33 Operating Expense per RTM (%)	6.8	2.0	11.8	10.5	6.1	2.2	0.1
34 Passenger Revenue per RPM (Sch. Svc.)(%)	*	*	**	**	**	**	**

## QUARTERLY FINANCIAL & TRAFFIC REVIEW

### SYSTEM OPERATIONS

#### Domestic Cargo Majors

ITEMS	QUARTER ENDED		12 MONTHS ENDED				
	2008/12	2007/12	2008/12	2008/09	2008/06	2008/03	2007/12
<u>FINANCIAL RESULTS: (\$Millions)</u>							
1 Operating Revenues	4,694.9	4,908.4	19,738.4	19,951.8	19,386.9	18,853.4	18,434.7
2 Operating Expenses	4,420.4	4,680.7	18,773.1	19,033.4	18,506.1	17,848.2	17,401.8
3 Operating Profit (Loss)	274.5	227.6	965.3	918.4	880.9	1,005.2	1,032.9
4 Net Income (Loss)	41.3	181.3	372.7	512.7	381.9	488.7	465.7
<u>TRAFFIC: (Billions)</u>							
5 RTMs - Scheduled Svc.	2.4	2.7	9.7	10.0	10.2	10.2	10.2
6 ATMs - Scheduled Svc.	4.3	4.5	16.8	17.0	17.1	17.0	16.9
7 Overall RTMs (All Svc.)	2.4	2.7	9.7	10.0	10.2	10.3	10.2
8 Overall ATMs (All Svc.)	4.3	4.5	16.8	17.0	17.1	17.1	17.0
<u>YIELD &amp; UNIT COST &amp; PROFITS: (Cents)</u>							
9 Operating Revenue per RTM	195.4	183.2	202.7	199.3	190.2	184.0	180.1
10 Operating Expense per RTM	184.0	174.7	192.8	190.1	181.6	174.2	170.0
11 Operating Profit (Loss) per RTM	11.4	8.5	9.9	9.2	8.6	9.8	10.1
12 Operating Expense per ATM	101.9	103.8	111.5	111.9	108.1	104.4	102.5
13 Passenger Revenue per RPM	*	*	*	*	*	*	*
<u>FINANCIAL RATIOS:</u>							
14 Operating Revenues to Total Investment	*	*	**	**	**	**	**
15 Times Interest Earned	*	*	**	**	**	**	**
16 Current Assets to Current Liabilities	*	*	**	**	**	**	**
17 No. of Days Cash Coverage of Cash Exp.	*	*	**	**	**	**	**
<u>FINANCIAL PERCENTAGES:</u>							
18 Operating Profit (Loss) to Operating Revenue	5.8	4.6	4.9	4.6	4.5	5.3	5.6
19 Net Income to Stockholders Equity	*	*	13.27	13.12	12.04	12.79	13.86
20 Corporate Return on Investment	*	*	4.2	5.0	3.4	4.0	3.8
21 Debt to Total Investment	*	*	**	**	**	**	**
<u>TON LOAD FACTOR: (%)</u>							
22 Scheduled Svc.	55.4	59.5	57.9	58.9	59.6	60.0	60.4
23 All Services	55.4	59.4	57.8	58.9	59.5	60.0	60.3
<u>Employment &amp; Productivity:</u>							
24 Employment, Total Weighted Avg CY	*	*	**	**	**	**	**
25 Overall RTM's per Employee (000)	*	*	**	**	**	**	**

	CHANGE OVER COMPARABLE PERIOD 12 MONTHS EARLIER						
26 Operating Revenues (%)	-4.3	3.9	7.1	9.3	6.1	3.1	0.7
27 Operating Expenses (%)	-5.6	5.2	7.9	10.8	7.4	3.5	1.3
28 Operating Profit (Loss) (in Millions \$)	46.9	-43.4	-67.6	-157.9	-154.1	-43.2	-84.4
29 Net Income (Loss)(in Millions \$)	-140.0	22.4	-93.0	69.4	-167.5	-67.7	-194.4
30 RTMs (All Svc.) (%)	-10.1	3.4	-4.7	-1.2	1.3	2.7	3.7
31 ATMs (All Svc.) (%)	-3.7	3.3	-0.6	1.2	3.1	4.2	5.2
32 Operating Revenues per RTM (%)	6.7	0.6	12.6	10.8	4.8	0.4	-2.9
33 Operating Expense per RTM (%)	5.3	1.7	13.4	12.4	6.1	0.8	-2.4
34 Passenger Revenue per RPM (Sch. Svc.)(%)	*	*	**	**	**	**	**

## QUARTERLY FINANCIAL & TRAFFIC REVIEW

### SYSTEM OPERATIONS

#### Int'l Cargo Majors

ITEMS	QUARTER ENDED		12 MONTHS ENDED				
	2008/12	2007/12	2008/12	2008/09	2008/06	2008/03	2007/12
<u>FINANCIAL RESULTS: (\$Millions)</u>							
1 Operating Revenues	2,410.2	2,550.7	10,741.4	10,881.9	10,525.9	10,054.6	9,725.7
2 Operating Expenses	2,200.6	2,202.3	9,642.6	9,644.3	9,267.5	8,808.8	8,458.6
3 Operating Profit (Loss)	209.6	348.4	1,098.8	1,237.6	1,258.5	1,245.8	1,267.2
4 Net Income (Loss)	67.0	195.4	576.8	705.3	714.7	723.0	699.3
<u>TRAFFIC: (Billions)</u>							
5 RTMs - Scheduled Svc.	1.8	2.0	7.6	7.8	7.7	7.5	7.4
6 ATMs - Scheduled Svc.	3.0	3.1	12.3	12.4	12.3	12.1	11.8
7 Overall RTMs (All Svc.)	1.8	2.0	7.7	7.9	7.9	7.7	7.5
8 Overall ATMs (All Svc.)	3.1	3.2	12.7	12.7	12.6	12.3	12.1
<u>YIELD &amp; UNIT COST &amp; PROFITS: (Cents)</u>							
9 Operating Revenue per RTM	132.0	126.6	139.1	137.6	134.0	130.9	129.2
10 Operating Expense per RTM	120.5	109.3	124.9	121.9	118.0	114.7	112.4
11 Operating Profit (Loss) per RTM	11.5	17.3	14.2	15.6	16.0	16.2	16.8
12 Operating Expense per ATM	70.4	69.9	76.2	76.1	73.7	71.4	70.2
13 Passenger Revenue per RPM	*	*	*	*	*	*	*
<u>FINANCIAL RATIOS:</u>							
14 Operating Revenues to Total Investment	*	*	**	**	**	**	**
15 Times Interest Earned	*	*	**	**	**	**	**
16 Current Assets to Current Liabilities	*	*	**	**	**	**	**
17 No. of Days Cash Coverage of Cash Exp.	*	*	**	**	**	**	**
<u>FINANCIAL PERCENTAGES:</u>							
18 Operating Profit (Loss) to Operating Revenue	8.7	13.7	10.2	11.4	12.0	12.4	13.0
19 Net Income to Stockholders Equity	*	*	**	**	**	**	**
20 Corporate Return on Investment	*	*	11.0	12.8	12.5	12.3	12.1
21 Debt to Total Investment	*	*	**	**	**	**	**
<u>TON LOAD FACTOR: (%)</u>							
22 Scheduled Svc.	58.9	64.1	61.4	62.7	62.8	62.5	62.6
23 All Services	58.5	63.9	61.0	62.4	62.4	62.3	62.5
<u>Employment &amp; Productivity:</u>							
24 Employment, Total Weighted Avg CY	*	*	**	**	**	**	**
25 Overall RTM's per Employee (000)	*	*	**	**	**	**	**

CHANGE OVER COMPARABLE PERIOD 12 MONTHS EARLIER							
26 Operating Revenues (%)	-5.5	17.4	10.4	16.4	17.3	16.1	16.7
27 Operating Expenses (%)	-0.1	17.0	14.0	18.5	19.3	17.3	16.6
28 Operating Profit (Loss) (in Millions \$)	-138.8	59.5	-168.4	30.0	55.7	93.6	186.7
29 Net Income (Loss)(in Millions \$)	-128.5	24.1	-122.5	30.0	38.3	82.6	62.0
30 RTMs (All Svc.) (%)	-9.6	10.6	2.2	7.5	9.1	8.7	8.0
31 ATMs (All Svc.) (%)	-1.4	8.2	4.2	6.7	8.0	8.2	8.0
32 Operating Revenues per RTM (%)	4.3	5.8	7.7	7.9	7.2	6.4	7.6
33 Operating Expense per RTM (%)	10.3	5.4	11.1	9.8	9.0	7.5	7.5
34 Passenger Revenue per RPM (Sch. Svc.)(%)	*	*	**	**	**	**	**

## QUARTERLY FINANCIAL & TRAFFIC REVIEW

### SYSTEM OPERATIONS

#### Federal Express

ITEMS	QUARTER ENDED		12 MONTHS ENDED				
	2008/12	2007/12	2008/12	2008/09	2008/06	2008/03	2007/12
<u>FINANCIAL RESULTS: (\$Millions)</u>							
1 Operating Revenues	5,823.2	6,143.4	24,679.9	25,000.1	24,387.5	23,796.8	23,250.3
2 Operating Expenses	5,407.7	5,617.2	22,978.3	23,187.8	22,610.4	21,832.7	21,250.0
3 Operating Profit (Loss)	415.5	526.2	1,701.6	1,812.3	1,777.1	1,964.1	2,000.3
4 Net Income (Loss)	235.4	302.5	1,010.4	1,077.5	1,057.4	1,193.0	1,248.7
<u>TRAFFIC: (Billions)</u>							
5 RTMs - Scheduled Svc.	2.5	2.8	10.4	10.7	10.8	10.9	10.8
6 ATMs - Scheduled Svc.	4.3	4.4	17.2	17.2	17.3	17.3	17.2
7 Overall RTMs (All Svc.)	2.6	2.9	10.6	10.9	11.0	11.0	11.0
8 Overall ATMs (All Svc.)	4.4	4.5	17.5	17.6	17.7	17.6	17.5
<u>YIELD &amp; UNIT COST &amp; PROFITS: (Cents)</u>							
9 Operating Revenue per RTM	226.6	215.7	233.0	230.0	221.5	215.9	212.0
10 Operating Expense per RTM	210.4	197.2	217.0	213.3	205.4	198.0	193.8
11 Operating Profit (Loss) per RTM	16.2	18.5	16.1	16.7	16.1	17.8	18.2
12 Operating Expense per ATM	122.0	124.7	131.2	131.9	128.0	124.0	121.7
13 Passenger Revenue per RPM	*	*	*	*	*	*	*
<u>FINANCIAL RATIOS:</u>							
14 Operating Revenues to Total Investment	*	*	2.95	2.79	2.55	2.35	2.36
15 Times Interest Earned	*	*	999.90	999.90	999.90	999.90	999.90
16 Current Assets to Current Liabilities	*	*	0.96	0.95	0.95	0.91	0.80
17 No. of Days Cash Coverage of Cash Exp.	*	*	5.10	5.22	6.10	4.79	5.22
<u>FINANCIAL PERCENTAGES:</u>							
18 Operating Profit (Loss) to Operating Revenue	7.1	8.6	6.9	7.2	7.3	8.3	8.6
19 Net Income to Stockholders Equity	*	*	13.27	13.12	12.04	12.79	13.86
20 Corporate Return on Investment	*	*	11.7	11.1	9.8	10.3	11.0
21 Debt to Total Investment	*	*	10.5	10.7	11.1	7.0	7.2
<u>TON LOAD FACTOR: (%)</u>							
22 Scheduled Svc.	58.3	63.2	60.8	62.1	62.5	62.8	62.9
23 All Services	58.0	63.2	60.5	61.8	62.3	62.6	62.8
<u>Employment &amp; Productivity:</u>							
24 Employment, Total Weighted Avg CY	119,724	116,591	118,866	118,082	117,192	116,201	114,786
25 Overall RTM's per Employee (000)	21.5	24.4	89.1	92.1	94.0	94.9	95.5

	CHANGE OVER COMPARABLE PERIOD 12 MONTHS EARLIER						
26 Operating Revenues (%)	-5.2	8.2	6.1	9.7	8.2	6.6	5.4
27 Operating Expenses (%)	-3.7	7.4	8.1	11.1	9.6	6.7	5.0
28 Operating Profit (Loss) (in Millions \$)	-110.7	79.3	-298.7	-108.7	-141.2	112.4	176.0
29 Net Income (Loss)(in Millions \$)	-67.1	12.6	-238.2	-158.6	-191.8	-11.8	84.3
30 RTMs (All Svc.) (%)	-9.8	4.1	-3.6	0.0	2.2	3.4	3.7
31 ATMs (All Svc.) (%)	-1.9	2.8	-0.2	1.0	2.8	3.8	4.3
32 Operating Revenues per RTM (%)	5.1	3.6	9.9	9.5	5.5	2.9	1.3
33 Operating Expense per RTM (%)	6.7	2.8	11.9	10.9	6.9	3.0	0.9
34 Passenger Revenue per RPM (Sch. Svc.)(%)	*	*	**	**	**	**	**

## QUARTERLY FINANCIAL & TRAFFIC REVIEW

### SYSTEM OPERATIONS

#### United Parcel Service

ITEMS	QUARTER ENDED		12 MONTHS ENDED				
	2008/12	2007/12	2008/12	2008/09	2008/06	2008/03	2007/12
<b>FINANCIAL RESULTS: (\$Millions)</b>							
1 Operating Revenues	1,281.9	1,315.7	5,799.8	5,833.6	5,525.4	5,111.1	4,910.1
2 Operating Expenses	1,213.4	1,265.9	5,437.4	5,489.9	5,163.1	4,824.3	4,610.4
3 Operating Profit (Loss)	68.5	49.8	362.4	343.7	362.3	286.8	299.7
4 Net Income (Loss)	-127.1	74.3	-60.9	140.5	39.2	18.7	-83.6
<b>TRAFFIC: (Billions)</b>							
5 RTMs - Scheduled Svc.	1.7	1.8	6.9	7.1	7.0	6.9	6.8
6 ATMs - Scheduled Svc.	3.0	3.2	12.0	12.1	12.0	11.8	11.5
7 Overall RTMs (All Svc.)	1.7	1.8	6.9	7.1	7.0	6.9	6.8
8 Overall ATMs (All Svc.)	3.0	3.2	12.0	12.1	12.0	11.8	11.6
<b>YIELD &amp; UNIT COST &amp; PROFITS: (Cents)</b>							
9 Operating Revenue per RTM	77.3	71.3	84.5	82.7	78.6	74.0	72.2
10 Operating Expense per RTM	73.2	68.6	79.2	77.8	73.4	69.9	67.8
11 Operating Profit (Loss) per RTM	4.1	2.7	5.3	4.9	5.2	4.2	4.4
12 Operating Expense per ATM	40.0	40.1	45.4	45.4	42.9	40.8	39.9
13 Passenger Revenue per RPM	*	*	*	*	*	*	*
<b>FINANCIAL RATIOS:</b>							
14 Operating Revenues to Total Investment	*	*	0.80	0.81	0.77	0.72	0.71
15 Times Interest Earned	*	*	2.24	1.89	2.14	1.67	-0.21
16 Current Assets to Current Liabilities	*	*	0.53	0.74	1.05	1.04	1.10
17 No. of Days Cash Coverage of Cash Exp.	*	*	2.52	3.98	4.13	3.32	4.99
<b>FINANCIAL PERCENTAGES:</b>							
18 Operating Profit (Loss) to Operating Revenue	5.3	3.8	6.2	5.9	6.6	5.6	6.1
19 Net Income to Stockholders Equity	*	*	-1.46	3.29	0.92	0.44	-1.98
20 Corporate Return on Investment	*	*	0.7	3.5	2.1	1.8	0.4
21 Debt to Total Investment	*	*	47.4	40.6	41.3	41.5	41.3
<b>TON LOAD FACTOR: (%)</b>							
22 Scheduled Svc.	54.8	58.2	57.3	58.3	58.5	58.5	58.8
23 All Services	54.7	58.4	57.3	58.3	58.5	58.4	58.8
<b>Employment &amp; Productivity:</b>							
24 Employment, Total Weighted Avg CY	6,042	6,198	6,048	6,087	6,133	6,164	6,199
25 Overall RTM's per Employee (000)	274.4	297.7	1,135.3	1,158.7	1,146.9	1,120.1	1,097.2

	CHANGE OVER COMPARABLE PERIOD 12 MONTHS EARLIER						
26 Operating Revenues (%)	-2.6	8.2	18.1	21.3	17.7	10.3	7.4
27 Operating Expenses (%)	-4.1	14.8	17.9	23.4	18.0	12.6	9.8
28 Operating Profit (Loss) (in Millions \$)	18.7	-63.2	62.7	-19.2	42.7	-61.9	-73.7
29 Net Income (Loss)(in Millions \$)	-201.4	33.9	22.7	258.0	62.7	26.7	-216.7
30 RTMs (All Svc.) (%)	-10.1	9.9	1.0	6.4	8.3	8.3	8.5
31 ATMs (All Svc.) (%)	-4.0	8.8	3.7	7.2	8.6	9.0	9.4
32 Operating Revenues per RTM (%)	8.4	-1.6	17.0	14.1	8.7	1.9	-1.0
33 Operating Expense per RTM (%)	6.6	4.4	16.8	16.1	9.0	4.0	1.3
34 Passenger Revenue per RPM (Sch. Svc.)(%)	*	*	**	**	**	**	**

**Comparison of Operating Profit (Loss)  
 For Individual Passenger and All-Cargo System Majors  
 Quarterly and 12-Month Ended Periods  
 December 2007 and 2008**

<b>Operating Profit (Loss) (\$Millions)</b>						
<b>Group/Carrier</b>	<b>Quarterly Data</b>			<b>12 Month Ended Data</b>		
	<b>12/2007</b>	<b>12/2008</b>	<b>\$Chg</b>	<b>12/2007</b>	<b>12/2008</b>	<b>\$Chg</b>
<b>System Passenger Majors</b>	(26.1)	(1,426.1)	(1,400.0)	6,654.2	(5,760.9)	(12,415.2)
AirTran Airways	14.9	54.9	40.0	136.8	(72.0)	(208.8)
Alaska Airlines	(40.6)	30.0	70.5	123.4	(22.6)	(146.0)
American Airlines	(139.6)	(213.7)	(74.1)	702.1	(2,054.3)	(2,756.4)
American Eagle Airlines	46.2	12.3	(33.9)	185.7	86.5	(99.2)
Atlantic Southeast Airlines	37.0	22.7	(14.3)	158.5	108.2	(50.4)
Comair	25.5	18.0	(7.4)	68.5	109.0	40.5
Continental Air Lines	68.6	(35.1)	(103.6)	620.9	(377.7)	(998.6)
Delta Air Lines	(34.8)	(55.7)	(21.0)	1,004.8	55.8	(949.1)
Expressjet Airlines	(40.6)	(7.8)	32.8	(100.8)	(113.6)	(12.9)
Frontier Airlines	(28.3)	0.0	28.3	(9.8)	(87.4)	(77.6)
JetBlue Airways	28.0	43.3	15.3	166.2	84.6	(81.6)
Mesa Airlines	(8.3)	15.6	23.8	(15.0)	(6.6)	8.4
Northwest Airlines	95.2	(440.7)	(535.9)	1,123.7	(540.5)	(1,664.2)
Skywest Airlines	47.1	29.1	(18.0)	182.2	140.6	(41.6)
Southwest Airlines	126.4	69.8	(56.6)	790.2	449.2	(341.0)
United Air Lines	(119.9)	(613.4)	(493.5)	952.4	(1,746.5)	(2,698.9)
US Airways 2/	(103.0)	(355.4)	(252.3)	564.4	(1,773.5)	(2,337.9)
<b>System Cargo Majors</b>	576.0	484.1	(92.0)	2,300.0	2,064.1	(236.0)
Federal Express	526.2	415.5	(110.7)	2,000.3	1,701.6	(298.7)
United Parcel Service	49.8	68.5	18.7	299.7	362.4	62.7
<b>System All Majors</b>	550.0	(942.0)	(1,492.0)	8,954.3	(3,696.9)	(12,651.2)

1/ US Airways data prior to 2008 has been retroactively adjusted to include America West.

**Comparison of Net Income (Loss)  
 For Individual Passenger and All-Cargo System Majors  
 Quarterly and 12-Month Ended Periods  
 December 2007 and 2008**

<b>Net Income (Loss) (\$Millions)</b>						
<b>Group/Carrier</b>	<b>Quarterly Data</b>			<b>12 Month Ended Data</b>		
	<b>12/2007</b>	<b>12/2008</b>	<b>\$Chg</b>	<b>12/2007</b>	<b>12/2008</b>	<b>\$Chg</b>
<b>System Passenger Majors</b>	(334.5)	(4,631.8)	(4,297.4)	6,417.4	(23,923.4)	(30,340.8)
AirTran Airways	(2.2)	(118.4)	(116.2)	51.5	(273.8)	(325.4)
Alaska Airlines	11.4	(57.7)	(69.1)	135.5	(95.2)	(230.7)
American Airlines	(112.5)	(327.9)	(215.4)	355.8	(2,530.8)	(2,886.5)
American Eagle Airlines	13.4	(30.5)	(43.9)	35.3	(55.6)	(90.9)
Atlantic Southeast Airlines	14.4	7.4	(7.1)	62.4	40.4	(22.0)
Comair	10.7	(5.5)	(16.3)	(237.9)	32.9	270.8
Continental Air Lines	(31.9)	(266.0)	(234.0)	459.5	(584.9)	(1,044.4)
Delta Air Lines	(108.3)	(896.0)	(787.8)	1,794.3	(8,432.7)	(10,227.0)
Expressjet Airlines	(27.5)	(27.1)	0.4	(67.0)	(99.1)	(32.1)
Frontier Airlines	(29.4)	(0.8)	28.6	(26.0)	(133.1)	(107.1)
JetBlue Airways	(3.4)	(57.1)	(53.8)	18.4	(75.9)	(94.3)
Mesa Airlines	(9.3)	8.5	17.8	(28.3)	(8.0)	20.3
Northwest Airlines	(4.4)	(1,164.5)	(1,160.1)	2,387.5	(5,986.8)	(8,374.2)
Skywest Airlines	29.0	13.9	(15.1)	101.0	73.4	(27.6)
Southwest Airlines	111.4	(56.0)	(167.4)	644.7	178.2	(466.4)
United Air Lines	(100.1)	(1,144.1)	(1,044.0)	348.5	(3,824.0)	(4,172.5)
US Airways 2/	(95.9)	(509.9)	(414.0)	382.2	(2,148.4)	(2,530.7)
<b>System Cargo Majors</b>	376.7	108.3	(268.5)	1,165.0	949.5	(215.5)
Federal Express	302.5	235.4	(67.1)	1,248.7	1,010.4	(238.2)
United Parcel Service	74.3	(127.1)	(201.4)	(83.6)	(60.9)	22.7
<b>System All Majors</b>	42.3	(4,523.6)	(4,565.8)	7,582.4	(22,973.9)	(30,556.3)

1/ US Airways data prior to 2008 has been retroactively adjusted to include America West.

**Comparison of Passenger Load Factors  
 For Individual Passenger and All-Cargo System Majors  
 Quarterly and 12-Month Ended Periods  
 December 2007 and 2008**

<b>Passenger Load Factor (Percent)</b>						
<b>Group/Carrier</b>	<b>Quarterly Data</b>			<b>12 Month Ended Data</b>		
	<b>12/2007</b>	<b>12/2008</b>	<b>Pt.Chg.</b>	<b>12/2007</b>	<b>12/2008</b>	<b>Pt.Chg.</b>
System Passenger Majors	78.0	78.1	0.1	80.3	79.9	(0.3)
AirTran Airways	75.1	78.1	3.1	76.0	78.9	2.9
Alaska Airlines	74.7	77.0	2.3	76.2	77.3	1.1
American Airlines	80.2	78.3	(1.9)	81.5	80.6	(0.9)
American Eagle Airlines	72.8	70.2	(2.5)	74.4	71.2	(3.2)
Atlantic Southeast Airlines	75.7	78.8	3.1	76.6	79.8	3.2
Comair	74.3	72.2	(2.1)	75.2	74.6	(0.6)
Continental Air Lines	80.0	79.9	(0.2)	82.2	81.2	(0.9)
Delta Air Lines	78.7	80.3	1.6	81.1	82.1	1.0
Expressjet Airlines	72.2	75.9	3.6	74.6	76.0	1.4
Frontier Airlines	76.8	80.3	3.4	78.6	81.9	3.3
JetBlue Airways	76.6	78.6	2.0	80.0	80.4	0.4
Mesa Airlines	73.8	77.4	3.6	77.5	76.6	(0.9)
Northwest Airlines	83.0	83.2	0.2	84.7	84.9	0.2
Skywest Airlines	74.5	77.4	2.9	77.5	76.3	(1.2)
Southwest Airlines	69.3	67.8	(1.5)	72.6	71.2	(1.4)
United Air Lines	79.8	79.4	(0.4)	82.8	81.0	(1.7)
US Airways 2/	78.2	80.0	1.7	80.5	81.7	1.2
System Cargo Majors	-	-	-	-	-	-
Federal Express	-	-	-	-	-	-
United Parcel Service	-	-	-	-	-	-
System All Majors	78.0	78.1	0.1	80.3	79.9	(0.3)

1/ US Airways data prior to 2008 has been retroactively adjusted to include America West.

**Comparison of Scheduled Passenger Yields (Cents)  
 For Individual Passenger and All-Cargo System Majors  
 Quarterly and 12-Month Ended Periods  
 December 2007 and 2008**

Group/Carrier	Quarterly Data			12 Month Ended Data		
	12/2007	12/2008	Pct.Chg.	12/2007	12/2008	Pct.Chg.
System Passenger Majors	13.27	13.63	2.67	13.11	13.84	5.57
AirTran Airways	12.84	13.13	2.24	12.72	12.78	0.45
Alaska Airlines	13.22	13.45	1.77	13.41	13.63	1.61
American Airlines	12.82	13.73	7.05	13.07	13.83	5.85
American Eagle Airlines	25.69	26.75	4.13	24.10	29.84	23.81
Atlantic Southeast Airlines	22.88	22.13	(3.27)	22.06	24.55	11.30
Comair	27.09	28.32	4.54	25.29	29.85	18.02
Continental Air Lines	12.97	13.73	5.86	12.73	13.62	7.05
Delta Air Lines	12.41	12.62	1.70	12.36	13.04	5.48
Expressjet Airlines	15.54	7.90	(49.16)	16.21	13.61	(16.03)
Frontier Airlines	11.46	12.41	8.27	11.30	12.20	8.00
JetBlue Airways	10.90	12.24	12.30	10.23	11.72	14.53
Mesa Airlines	19.62	18.34	(6.51)	18.24	20.11	10.24
Northwest Airlines	12.46	12.65	1.53	12.75	13.18	3.42
Skywest Airlines	17.94	16.79	(6.39)	17.50	18.26	4.32
Southwest Airlines	13.21	14.70	11.30	12.68	13.91	9.76
United Air Lines	13.22	13.26	0.29	12.65	13.41	6.05
US Airways 2/	13.08	12.94	(1.08)	13.19	13.17	(0.14)
System Cargo Majors	-	-	-	-	-	-
Federal Express	-	-	-	-	-	-
United Parcel Service	-	-	-	-	-	-
System All Majors	13.27	13.63	2.67	13.11	13.84	5.57

1/ US Airways data prior to 2008 has been retroactively adjusted to include America West.

**Comparison of Operating Profit Margin (Percent)  
 For Individual Passenger and All-Cargo System Majors  
 Quarterly and 12-Month Ended Periods  
 December 2007 and 2008**

<b>Operating Profit Margin (Percent)</b>						
<b>Group/Carrier</b>	<b>Quarterly Data</b>			<b>12 Month Ended Data</b>		
	<b>12/2007</b>	<b>12/2008</b>	<b>Pt. Chg</b>	<b>12/2007</b>	<b>12/2008</b>	<b>Pt. Chg.</b>
<b>System Passenger Majors</b>	(0.1)	(4.6)	(4.5)	5.2	(4.2)	(9.4)
AirTran Airways	2.6	9.3	6.8	5.9	(2.8)	(8.7)
Alaska Airlines	(5.4)	4.1	9.6	4.0	(0.7)	(4.7)
American Airlines	(2.5)	(3.9)	(1.4)	3.1	(8.7)	(11.7)
American Eagle Airlines	8.9	2.7	(6.2)	9.2	3.9	(5.3)
Atlantic Southeast Airlines	10.5	7.6	(2.9)	11.6	7.4	(4.2)
Comair	8.2	7.1	(1.1)	5.9	8.5	2.6
Continental Air Lines	2.0	(1.0)	(3.0)	4.4	(2.5)	(6.9)
Delta Air Lines	(0.7)	(1.1)	(0.4)	5.2	0.3	(5.0)
Expressjet Airlines	(9.4)	(5.0)	4.4	(6.0)	(8.7)	(2.7)
Frontier Airlines	(8.5)	0.0	8.5	(0.7)	(6.4)	(5.6)
JetBlue Airways	3.8	5.3	1.6	5.8	2.5	(3.3)
Mesa Airlines	(3.2)	7.1	10.3	(1.4)	(0.6)	0.8
Northwest Airlines	3.0	(13.8)	(16.7)	8.8	(3.8)	(12.7)
Skywest Airlines	9.2	6.5	(2.7)	8.9	6.8	(2.1)
Southwest Airlines	5.1	2.6	(2.5)	8.0	4.1	(3.9)
United Air Lines	(2.4)	(13.5)	(11.1)	4.8	(8.6)	(13.4)
US Airways 2/	(3.6)	(12.5)	(8.9)	5.1	(14.2)	(19.3)
<b>System Cargo Majors</b>	7.7	6.8	(0.9)	8.2	6.8	(1.4)
Federal Express	8.6	7.1	(1.4)	8.6	6.9	(1.7)
United Parcel Service	3.8	5.3	1.6	6.1	6.2	0.1
<b>System All Majors</b>	1.4	(2.5)	(3.8)	5.7	(2.2)	(7.9)

1/ US Airways data prior to 2008 has been retroactively adjusted to include America West.

**Comparison of Debt-to-Investment and Total Debt  
 For Individual Passenger and All-Cargo System Majors  
 Quarterly and 12-Month Ended Periods  
 December 2007 and 2008**

Group/Carrier	Debt To Investment (Percent)			Total Debt (\$Billions)		
	Quarterly Data			Quarterly Data		
	12/2007	12/2008	Pt.Chg.	12/2007	12/2008	\$ Chg.
System Passenger Majors	59.4	89.4	30.0	54.2	56.0	1.9
AirTran Airways	70.3	82.0	11.6	1.1	1.1	0.1
Alaska Airlines	58.5	72.4	13.9	1.2	1.6	0.3
American Airlines	84.4	253.7	169.3	7.8	8.1	0.3
American Eagle Airlines	92.1	92.7	0.6	3.5	3.3	(0.2)
Atlantic Southeast Airlines	66.3	62.9	(3.3)	1.1	1.0	(0.1)
Comair	55.0	48.8	(6.2)	0.6	0.6	(0.0)
Continental Air Lines	75.0	97.3	22.3	4.8	5.6	0.9
Delta Air Lines	47.3	77.7	30.4	9.0	10.2	1.2
Expressjet Airlines	103.0	146.1	43.1	0.3	0.3	0.0
Frontier Airlines	71.7	3.9	(67.9)	0.5	0.0	(0.5)
JetBlue Airways	74.4	70.6	(3.7)	3.0	3.0	0.0
Mesa Airlines	79.8	77.9	(1.9)	1.0	0.9	(0.1)
Northwest Airlines	49.6	82.1	32.5	7.1	5.8	(1.3)
Skywest Airlines	40.6	42.6	2.0	0.8	0.8	0.1
Southwest Airlines	23.1	42.5	19.4	2.1	3.7	1.6
United Air Lines	76.8	149.7	73.0	8.8	7.4	(1.4)
US Airways 2/	44.3	109.3	65.0	1.5	2.6	1.1
System Cargo Majors	21.1	29.0	7.9	3.7	4.1	0.4
Federal Express	7.2	10.5	3.3	0.7	0.7	(0.0)
United Parcel Service	41.3	47.4	6.2	3.0	3.4	0.4
System All Majors	53.2	78.3	25.1	57.9	60.2	2.3

1/ US Airways data prior to 2008 has been retroactively adjusted to include America West.

## FOOTNOTES

- \* Not calculated on a quarterly basis.
- \*\* Cannot be calculated because balance sheet data not presented on an entity basis.  
Data presented only on a system basis.
- ++ Not calculated for all-cargo carriers.
- # Meaningful calculation cannot be made because of negative data.
- & Over +/- 500 percent.

EXPLANATION OF LINE ITEMS

LINE #	DESCRIPTION OF LINE ITEM	DERIVATION OF LINE ITEM
1	Operating Revenues	Operating Revenues (Account 4999)
2	Operating Expenses	Operating Expenses (Account 7199)
3	Operating Profit or Loss	Operating Profit (Account 7999)
4	Net Income or Loss	Net Income (Account 9899)
5	Overall Revenue Ton-miles	Overall Revenue Ton-miles (Item Z-240)
6	Overall Available Ton-miles	Overall Available Ton-miles (Item Z-280)
7	Revenue Passenger-Miles (Scheduled Service)	Total scheduled revenue passenger-miles (Item K-140)
8	Available Seat-Miles (Scheduled Service)	Total scheduled available seat-miles (Item K-280)
9	Operating revenue per revenue ton-mile	$\frac{\text{Operating revenues (Account 4999)}}{\text{Overall revenue ton-miles (Item Z-240)}}$
10	Operating expense per revenue ton-mile	$\frac{\text{Operating expenses (Account 7199)}}{\text{Overall revenue ton-miles (Item Z-240)}}$
11	Operating profit per revenue ton-mile	$\frac{\text{Operating profit (Account 7999)}}{\text{Overall revenue ton-miles (Item Z-240)}}$
12	Operating expense per available ton-mile	$\frac{\text{Operating expenses (Account 7199)}}{\text{Overall available ton-miles (Item Z-280)}}$
13	Passenger revenue per revenue passenger-mile (scheduled service)	$\frac{\text{Passenger revenues (scheduled service) (Account 3901)}}{\text{Total revenue passenger-miles (scheduled service (Item K-140))}}$
14	Operating revenues to total investment	$\frac{\text{Operating revenue (Account 4999)}}{\text{Total investment (See line 20)}}$
15	Times interest earned	$\frac{\text{Income Before income taxes (Account 8999) + interest on long-term debt and capital leases (Account 8181) + Other interest expense (Account 8182)}}{\text{Interest on long-term debt and capital leases (Account 8181) + Other interest expense (Account 8182)}}$
16	Current assets to current liabilities	$\frac{\text{Current assets (Account 1499)}}{\text{Current liabilities (Account 2199)}}$
17	Number of days coverage of cash operating expenses	$\frac{\text{Cash (Account 1010) + short-term investments (Account 1100)}}{[\text{Total operating expenses (Account 7199) less depreciation and amortization (Account 7000)]/365}$
18	Operating Profit to operating revenues	$\frac{\text{Operating profit (Account 7999)}}{\text{Operating revenues (Account 4999)}}$
19	Net income to stockholders' equity	$\frac{\text{Net income (Account 9999)}}{\text{Stockholders' equity (Account 2995) (5 Quarter average)}}$

EXPLANATION OF LINE ITEMS

LINE #	DESCRIPTION OF LINE ITEM	DERIVATION OF LINE ITEM
20	Overall corporate rate of return	$\frac{\text{Net income plus interest expense}}{\text{Total investment}}$ <p>Net income plus interest expense is:                      Net income (Account 9899) + interest on long-term debt and capital leases (Account 8181) + other interest expense (Account 8182) + amortization of debt discount, premium and expense (Account 8184).</p> <p>Total investment is:                      Current maturities of long-term debt (Account 2000) + current obligations under capital leases (Account 2080) + long-term debt (Account 2210) + advances from associated companies (Account 2240) + noncurrent obligations under capital leases (Account 2280) + stockholders' equity (Account 2995) - unamortized debt expense (Account 1840). (A five-quarter average is used).</p>
21	Debt to total investment (end of period)	$\frac{\text{Current maturities of long-term debt (Account 2000) + current obligations under capital leases (Account 2080) + long-term debt (Account 2210) + advances from associated companies (Account 2240) + noncurrent obligations under capital leases (Account 2280) - unamortized debt expense (Account 1840)}}{\text{Total investment (See line 20)}}$
22	Actual passenger load factor (scheduled service)	$\frac{\text{Revenue passenger-miles (scheduled service (Item K-140))}}{\text{Available seat-miles (scheduled service (Item K-280))}}$
23	Operating breakeven load factor (scheduled service)	$\frac{\text{Capacity operating expense, scheduled service (passenger)}}{[\text{Scheduled passenger revenue (Account 3901) - Traffic operating expense, passenger scheduled service}] / \text{Actual passenger load factor, scheduled service}}$
24	Difference, actual-breakeven load factor	Actual (Line 22) - Breakeven (Line 23)
25	Employees	Sum of full time and one-half part time employees (Average for 12-month ended period)
26	Overall revenue ton-miles per employee	$\frac{\text{Overall revenue ton-miles (Item Z-240)}}{\text{Average \# of employees (See Line 25)}}$